

Crowley Ranch Reserve Home Owners Association (CRRHOA) Wildland Fire Emergency Notification Procedures -- Jan 2025

1. IN THE EVENT OF EITHER A STRUCTURE FIRE OR A WILDLAND FIRE -- **IMMEDIATELY CALL 911.**

a. Provide the Archuleta County Emergency Dispatch as much detail on the location, type and extent of the fire.

b. After notifying Archuleta County Emergency dispatch, initiate our CRRHOA internal notification. (See insert).

c. Crowley Ranch Reserve has a limited quantity of firefighting equipment primarily intended to be used to contain -- limited in scope and size -- wildland fires until the Pagosa Spring Fire District personnel arrive on scene. (*Note: none of this equipment is intended to be used to fight a structure fire). Additionally, select Crowley Ranch Reserve Homeowners have volunteered to serve as a “first-line” of defense against fires. However, our volunteer emergency response capacities are limited and not intended to be a professional fire response capability. **It is absolutely essential that 911 emergency dispatch is notified first.**

2. *In the event of a major wildland fire that requires residents to evacuate, Archuleta County has partnered with Nixle to implement its Community Notification System to alert residents in real-time for localized emergency situations as well as relevant community advisories.

a. All Alerts will be targeted geographically, allowing residents to receive localized, relevant alerts from (AGENCY). Nixle Alerts can be sent via Text, Email, Voice, Web, social media, and the Nixle Mobile App in an instant.

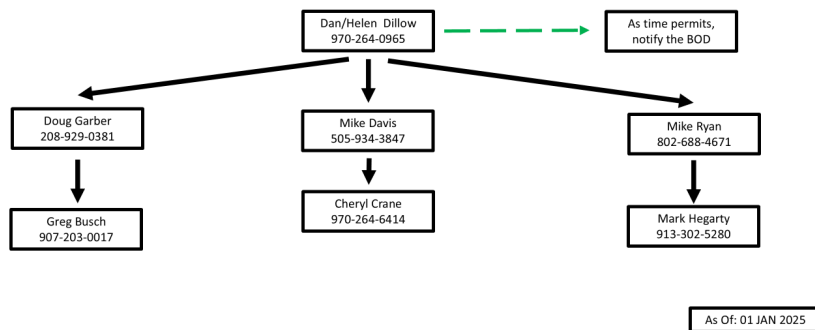
b. Nixle is partnered with NLETS for unmatched data security, as well as the National Center for Missing and Exploited Children, the National Blue Alert Network, and Google for unmatched reach and two-way information exchange.

3. For more information, visit [Everbridge Nixle](#).

4. To sign up go to [Citizens Alert - NIXLE | Archuleta County, CO - Official Website](#) and select the “notify me” widget.

Crowley Ranch Reserve (CRR) Wildland Fire Notification Procedures

1. **Call 911, Give Archuleta County Emergency Dispatch a detailed location of fire and CRR's front gate code.**
2. Initiate our internal CRR fire alert procedures. **After Calling 911**, call Dan/Helen Dillow at 970-264-0965, If they cannot be reached, call the next person/group in the chain.



* <https://www.archuletacounty.org/569/>