

# MAY NEWSLETTER, 2025



Our quarterly community newsletter, highlighting all the wonderful things about Crowley Ranch Reserve!





# WHAT WAS ON THE HORIZON?



From low water to more water, Colorado's weather is constantly in a state of flux February through May.

Graupel, rain, slushy snowflakes, and high winds are all a part of spring in the San Juan Mountains.

Bring your windbreaker, thermal layers, a hat and we'll see you OUTSIDE!

# NEBULAS... AND WHY SHOULD WE CARE IN CROWLEY?

A nebula is a vast cloud of dust and gas that fills the space between stars, serving as a birthplace for new stars. Composed of dust and fundamental elements, including hydrogen and various ionized gases, nebulae play a crucial role in stellar formation.

Some nebulae are bright enough to be observed with the naked eye. Others can be viewed through telescopes, depending on how many stars are around them to illuminate the dust clouds that form the nebulae.

Your neighbor Jeff, an astrophotography enthusiast, has utilized a Vespera telescope along with image processing software to capture the following images of nebulae. Each photograph required a minimum of 1-2 hours of observation, involving the stacking of hundreds of images to achieve an optimal signal-to-noise ratio (SNR).

In Crowley Ranch Reserve, we are fortunate to have ***Dark Sky lighting guidelines*** (<https://darkskycolorado.org/category/dark-sky-places/>), allowing us all to witness these star-forming regions.





# M27 - DUMBBELL NEBULA



# M51- WHIRLPOOL GALAXY



**NGC 7293  
HELIX  
NEBULA**





# M20 TRIFFID NEBULA



# COMMUNITY WORK DAYS

*MUCHO Gratitude* to all our volunteers!!!! Mark Hegarty, Kelly and Brian Jones, Dan and Helen Dillow, Marc and Amber Gosney, Jim Rawls, and Jill Fedorko.

Community members in our little rural community continuing to make a positive impact!





**READY TO BEGIN  
THE DAY!**







**OUR NEW STOP  
SIGNS & POSTS ARE  
UP!**







**THE HOT TUBS HAVE HAD THEIR  
FIRST DIAMOND BLASTING, AND  
THE DUMPSTER FENCING IS READY  
TO ROLL!**





**THE LANDSCAPING  
AROUND THE HOT TUBS  
HAS BEEN FRESHENED UP!**



**THE ELECTRIC FENCING  
AROUND THE FRONT  
ENTRYWAY LANDSCAPING HAS  
BEEN REMOVED!**

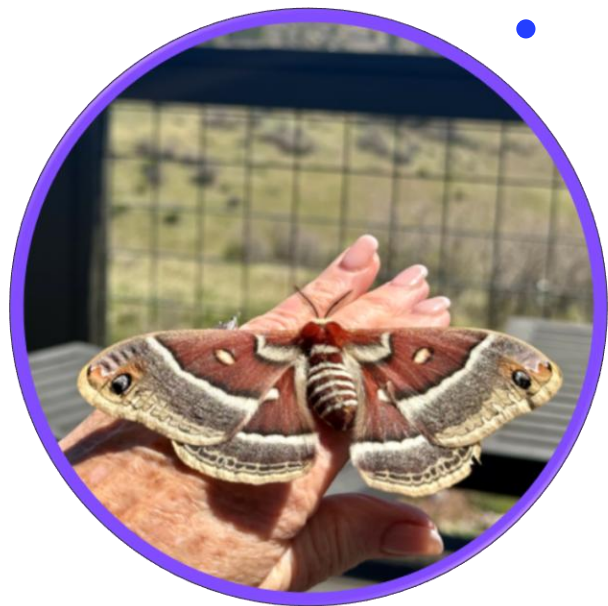




# NATIVES & MIGRANTS



+



# HYALOPHORA CECROPIA, GIANT SILK MOTH

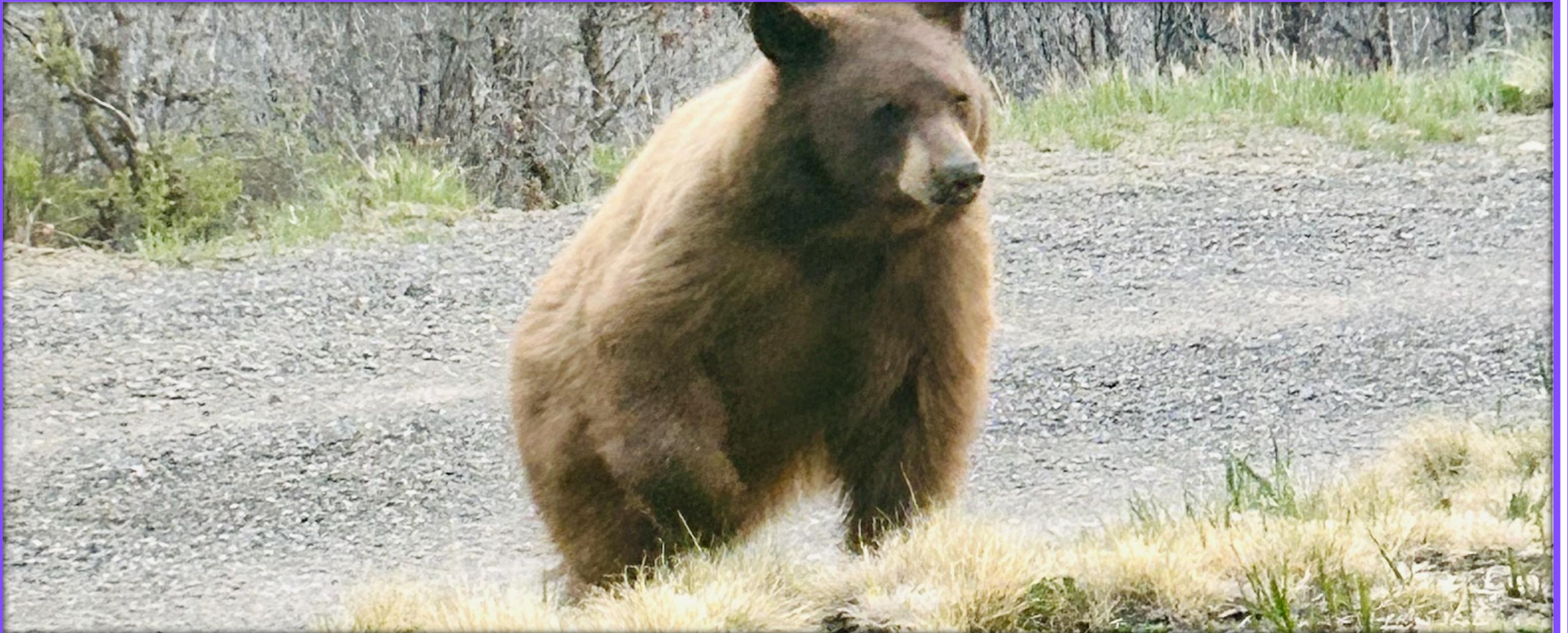


# PIPILO MACULATUS, SPOTTED TOWHEE



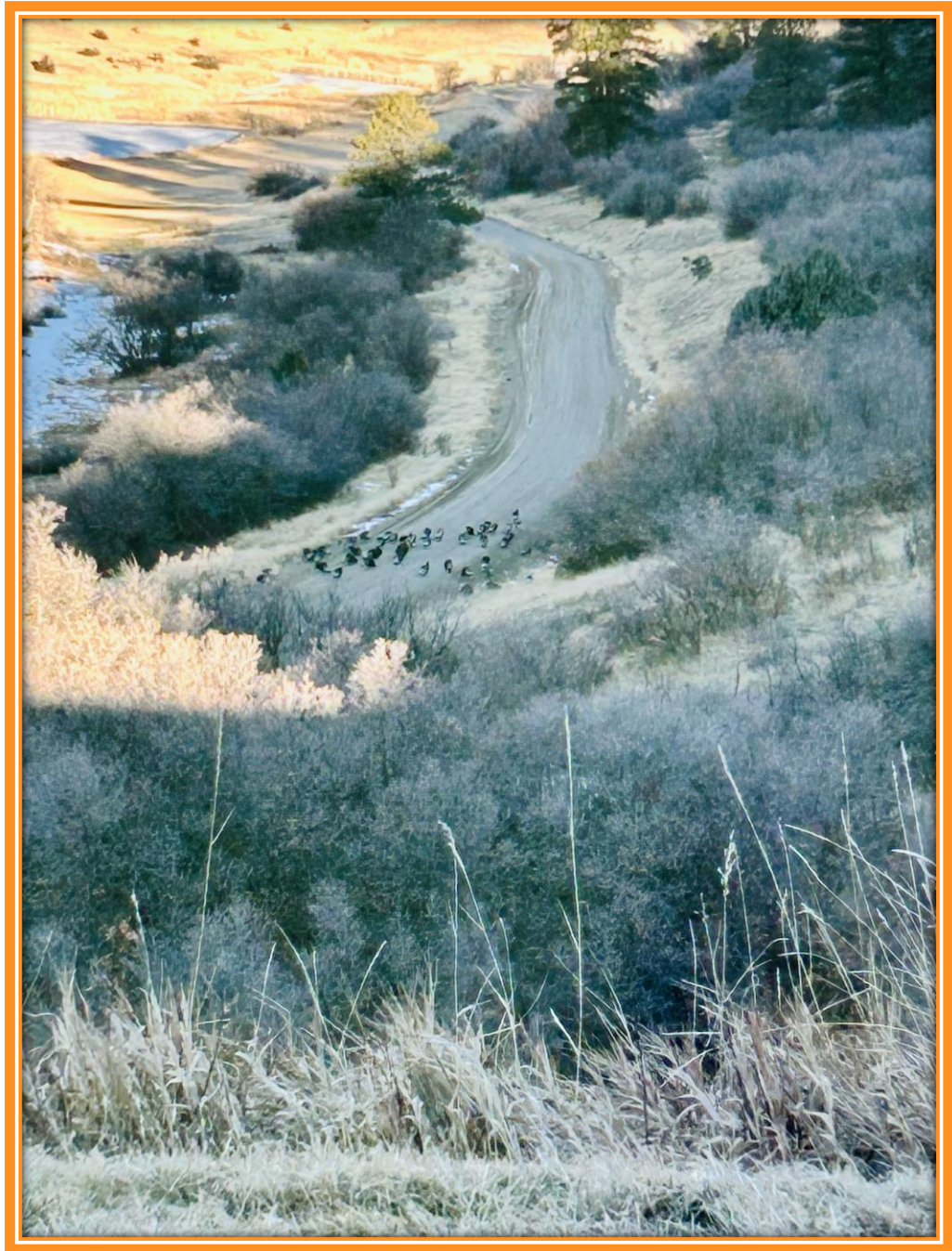


# URSUS AMERICANUS, BLACK BEAR





**MELEAGRIS  
GALLOPAVO  
MERRIAM,  
MERRIAM'S  
TURKEY**





+

•



# WESTERN TANAGER & EVENING GROSBEAK



# SITTA PYGMAEA, PYGMY NUTHATCH





# ARE YOU FAMILIAR WITH THE TERM "STEVE"?

Strong Thermal Emission Velocity Enhancement (STEVE) is defined as "an unusual atmospheric phenomenon characterized by a purple-pink light ribbon or ribbon-like structure appearing in the night sky. While it is often seen during auroral events, it is not categorized as a standard aurora."

Fortunately, two of our neighbors, Jim and Miles, captured images on the night of May 17 and provided them to the Pagosa Weather Team for confirmation.

How cool!







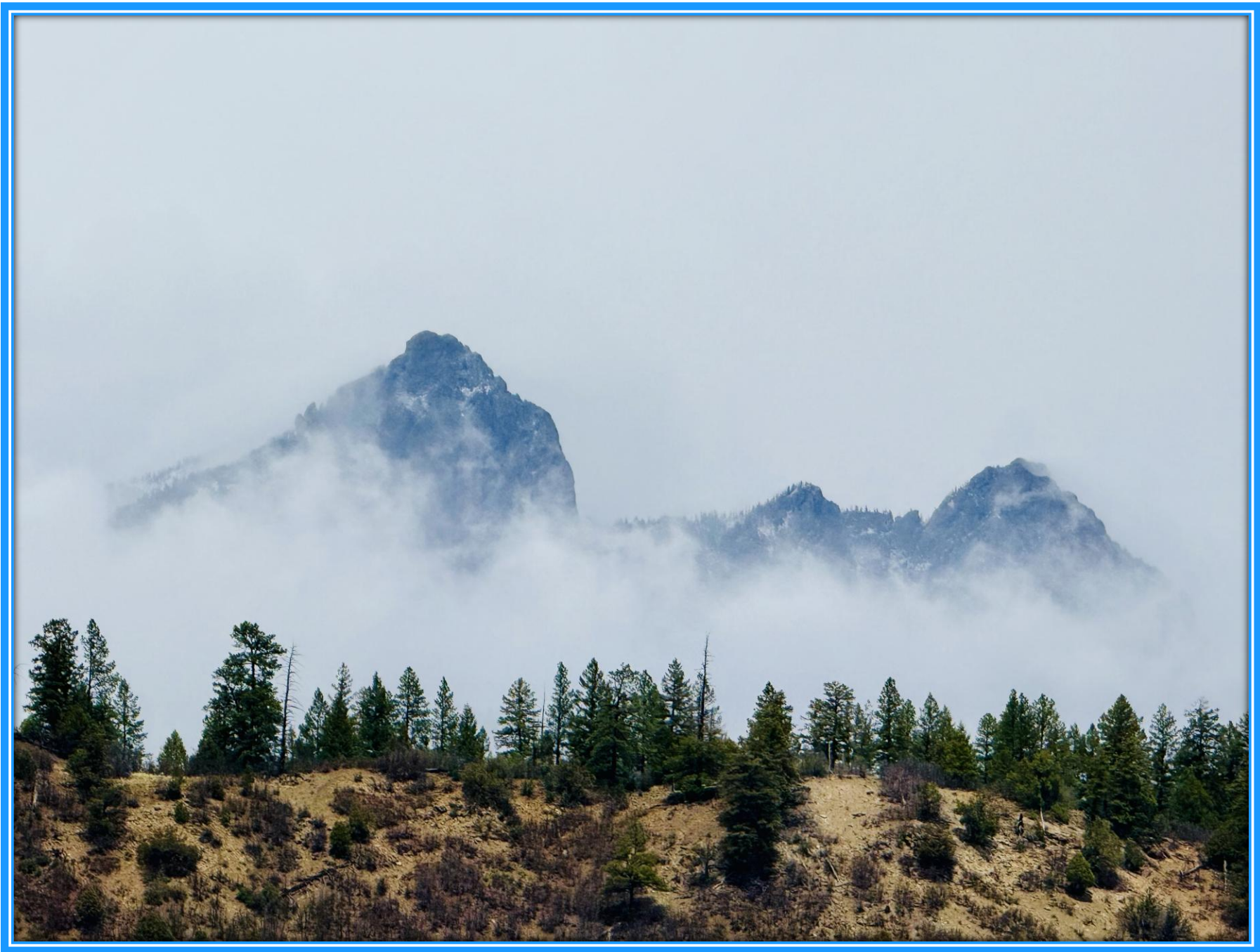




# YOUR VIEW

Really, it's **All** spectacular!! No one has a bad one, in fact that's why we're all here...

Thank you Brenda, Elizabeth, Deborah, Paul, Steve, Melanie, great views!



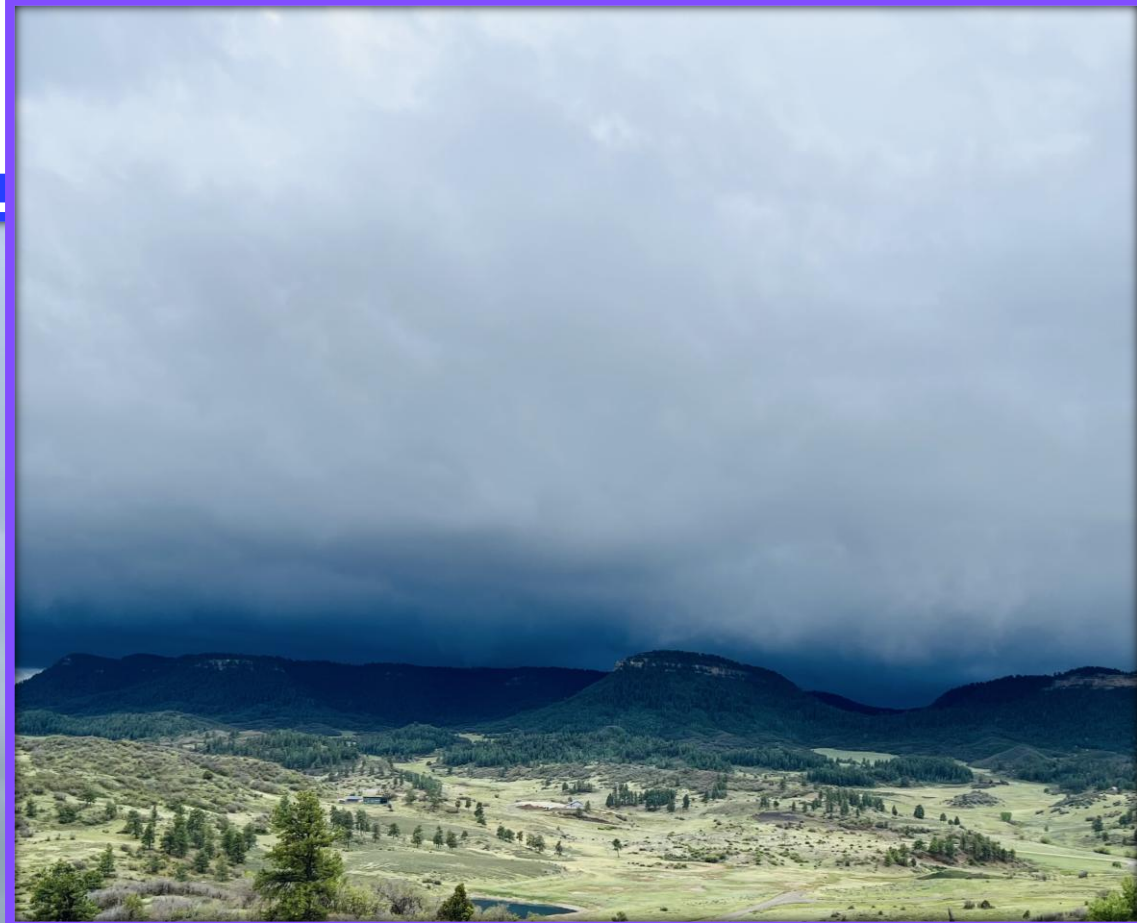






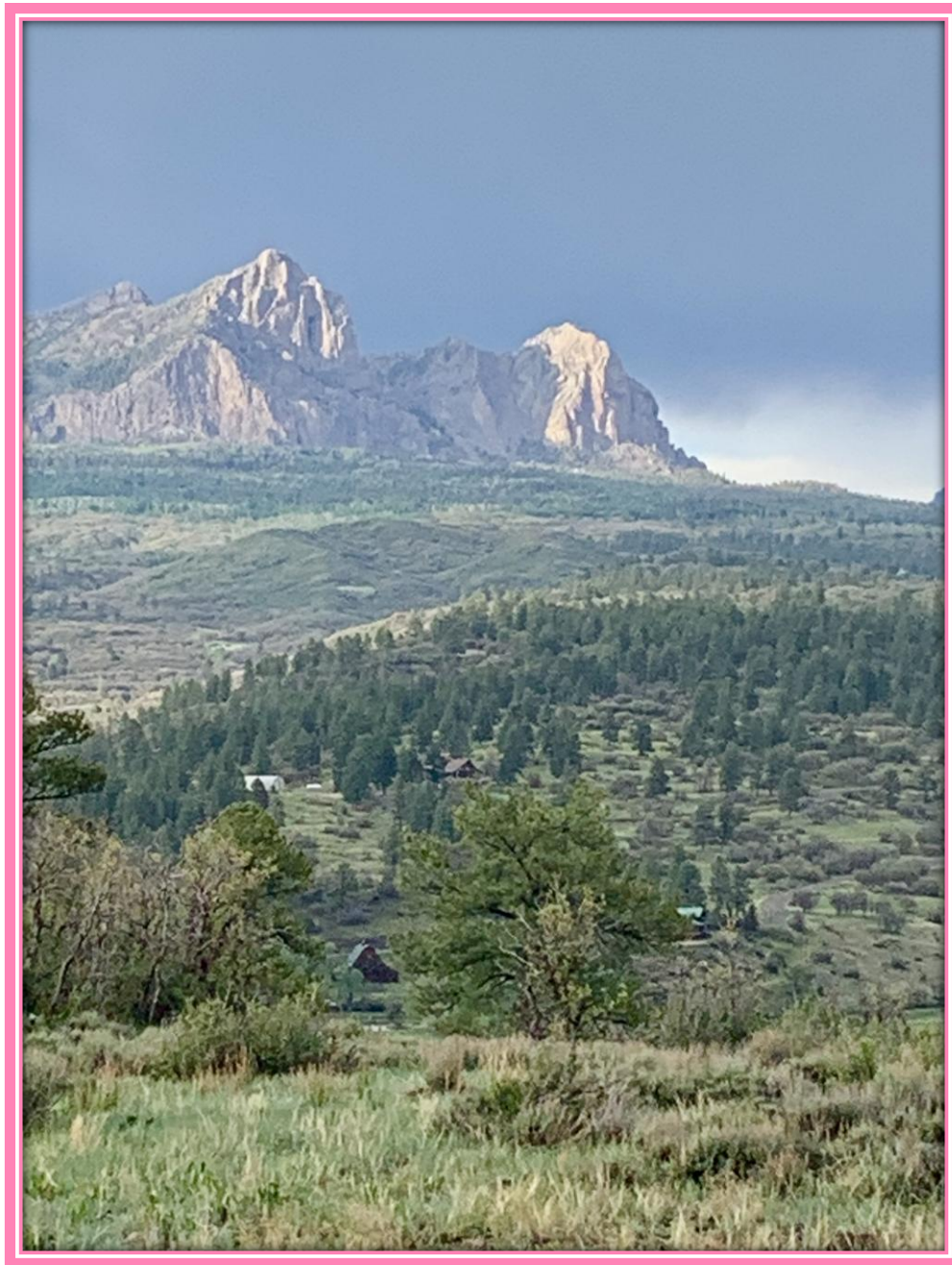






+



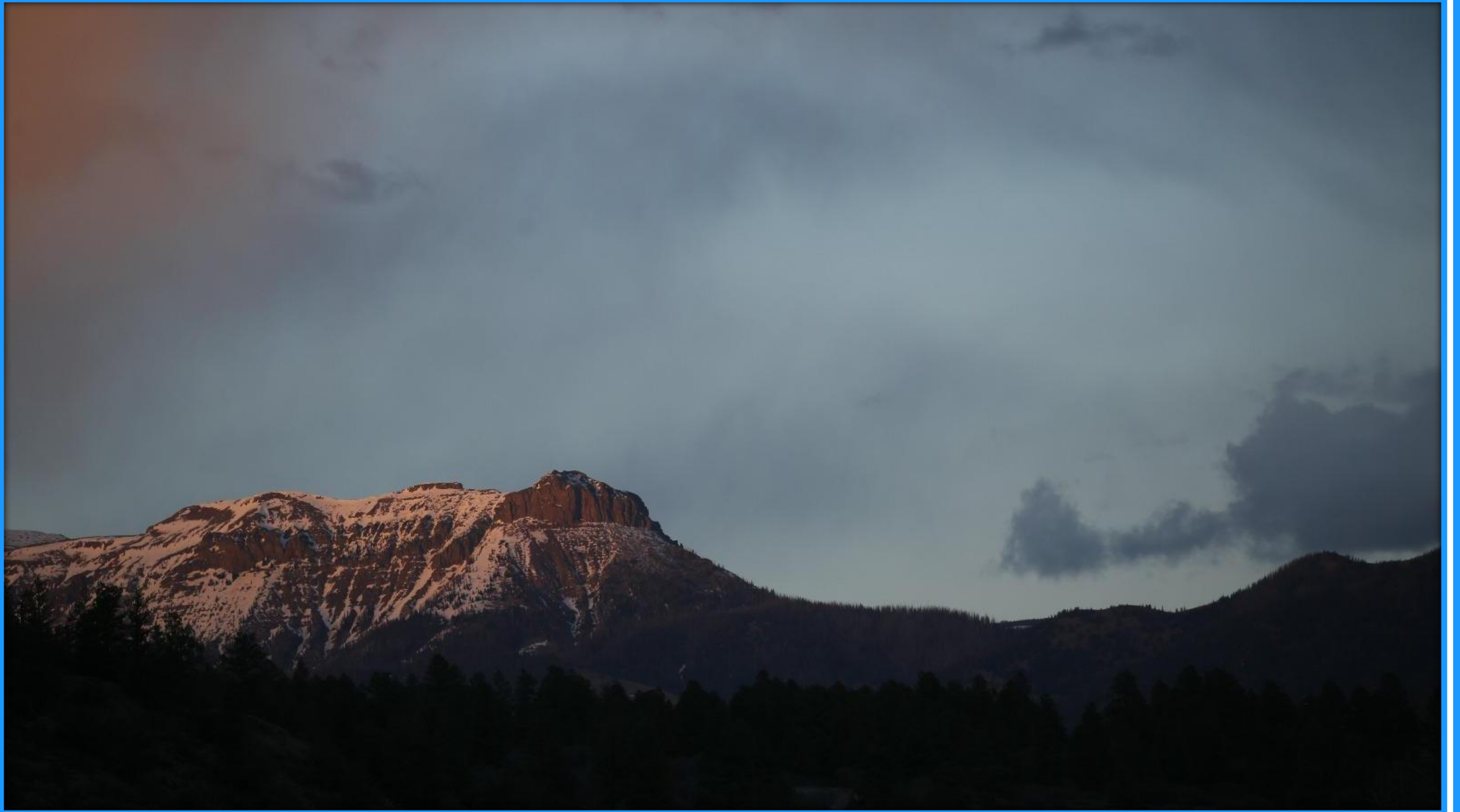


+

•

○







+

•

○



# TROUT RESTOCKING

The Three Amigo's  
supervising the  
Three Supervisors...





# C.R.R., SEMI ANNUAL HWY TRASH PICKUP...

The management of roadside litter incurs millions of dollars each year. It can be frequently overwhelming to manage the waste discarded by careless individuals.

**We are seeking your assistance just twice a year!**

Become part of the thousands of volunteers dedicated to preserving Colorado's beauty by participating in litter clean-up efforts along our highways.



## Adopt-a-Highway:

This initiative enables **C.R.R.** to take responsibility for a designated stretch of highway and participate in its regular cleanup.

## What support does CDOT offer?

- CDOT supplies a sign acknowledging the group's volunteer efforts on the adopted highway section.
- Additionally, CDOT provides: litter bags, safety vests, [safety and meth lab waste recognition videos](#), and other relevant resources.
- CDOT also removes the litter bags once the group places the filled bags at the roadside.



**THANK YOU TO THE FOLLOWING TRASH REMOVAL  
PARTICIPANTS:**

**MIKE & LORI HERNANDEZ, CHERYL CRANE, PILAR  
KRAWCHUK, MIKE DAVIS, MARC GOSNEY, & STEVE  
KOHLHAGEN.**

**WAY TO CLEAN UP!!!**

# **LOW WATER NATIVE PLANTS FOR POLLINATOR GARDENERS CAN MAKE A DIFFERENCE - HELP PROTECT OUR NATIVE POLLINATORS!**

Did you know....? A pollinator-friendly yard not only provides nectar and pollen for the pollinators, but also nesting sites and/or host plants on which pollinators can lay their eggs.





Additional pollinator homes...





**Pearly Everlasting** *Anaphalis margaritacea* Silvery foliage, clusters of 'straw' white flowers, excellent dried flower; 1-2' tall, sunny, moist or dry sites; up to 10,000'

**Showy Milkweed** \* *Asclepias speciosa* 3-4' tall, back of border; sunny, moist to dry locations; up to 8,000'; will self-seed; great for the Monarchs!

**Harebells** *Campanula rotundifolia* Nodding bell-shaped flowers; 6-12" tall, moist to dry, sun to shade, up to 13,000'

**Aspen Daisy** *Erigeron speciosus* Daisy-type blossoms, lavender with yellow centers; 1-2' tall, sun to part shade, moist to dry; up to 9,500'

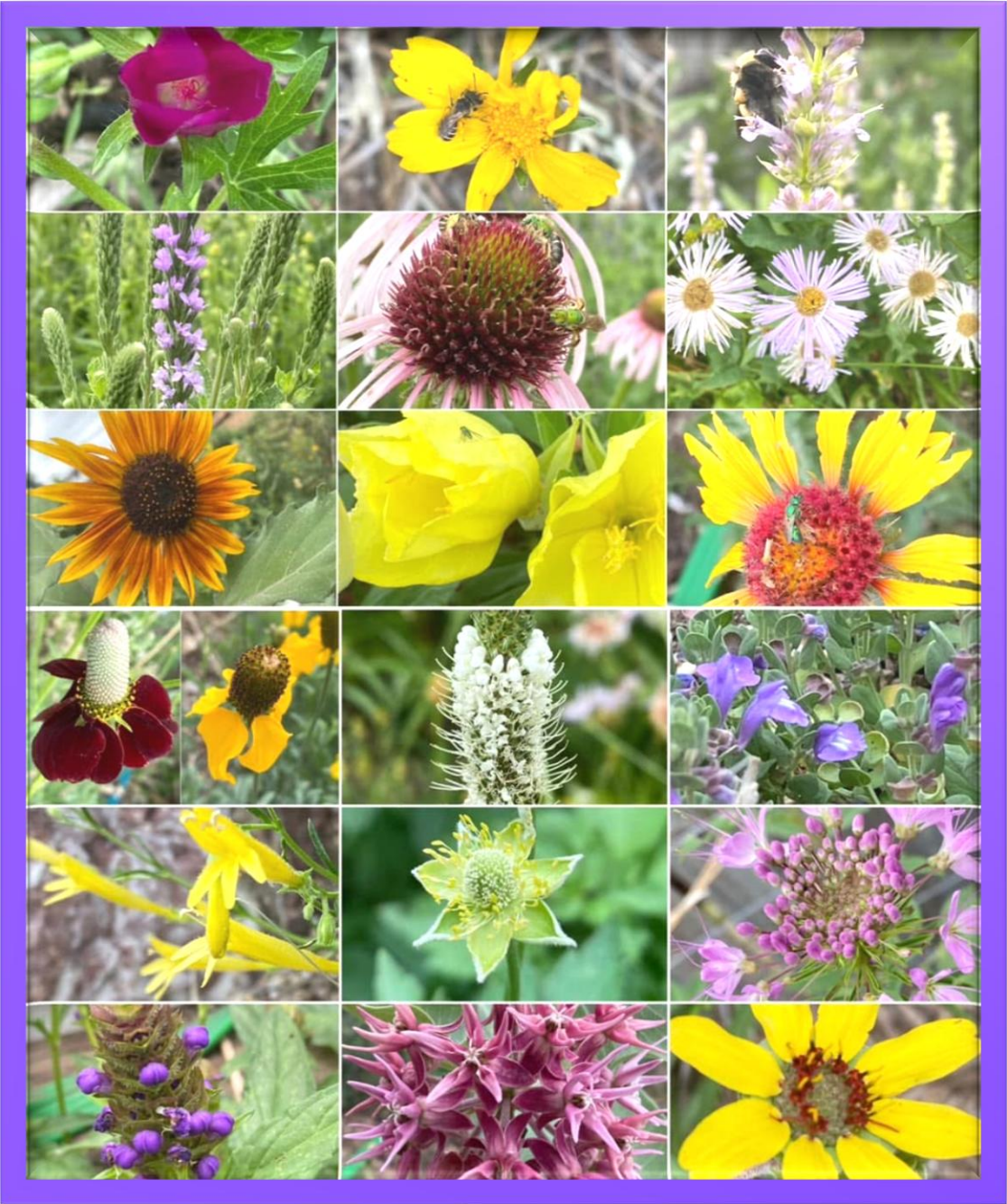
**Blanketflower** *Gaillardia aristata* 1-2' tall, up to 9,000'; dry, well-drained, sunny locations. Most of the commercial varieties are non-native hybrids.

**Beebalm** *Monarda fistulosa* 2-3' tall, sun to part-shade, moist or dry; up to 9,000'

**Rocky Mtn. Penstemon** \* *Penstemon strictus* 1-2' tall spikes; dry, well-drained, sun to part shade; up to 10,000'

**Black-eyed Susan** *Rudbeckia hirta* Golden yellow/brown centers; biennial or short-lived perennial, reseeds readily; dry mountain meadows up to 9,000'; moist to dry locations





Instead of just planting one of each species scattered throughout the garden, try planting clumps of at least 3 of the same species – it helps the pollinator save energy.

Most bees and butterflies prefer sunny, open areas. Pollinators attracted to open sunny areas will also have more choices to pollinate the flowers or lay eggs on the taller shrubs and trees along the borders or north end of your yard.





+

•

○



# TRAVEL DESTINATIONS...





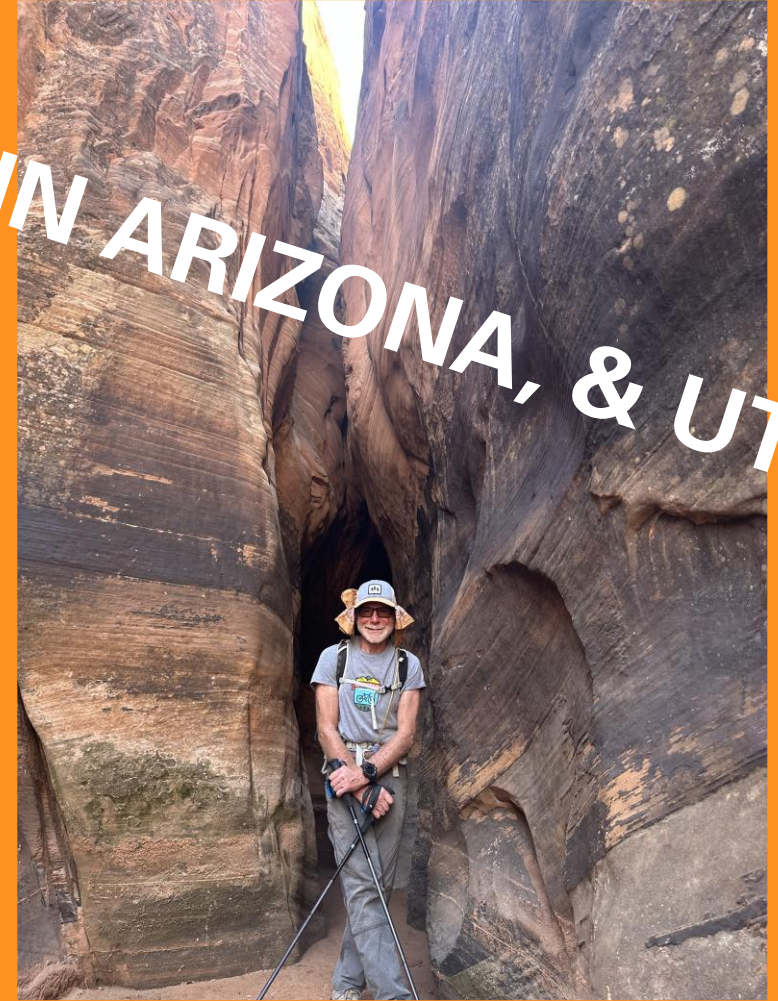
**GOLFING IN TEXAS**







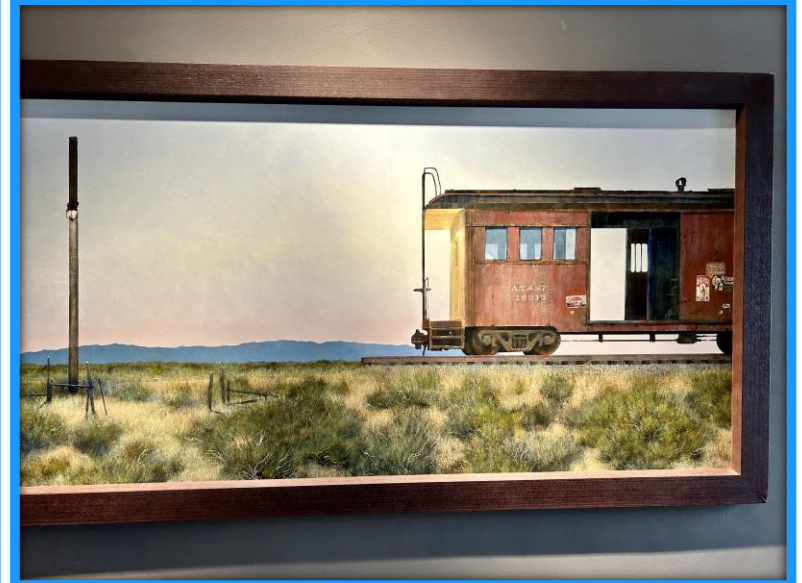
# HIKING IN ARIZONA, & UTAH





+ •

# GALLERY HOPPING IN SANTA FE







**FISHING THE COAST**





**SIGHT SEEING IN ABIQUE**



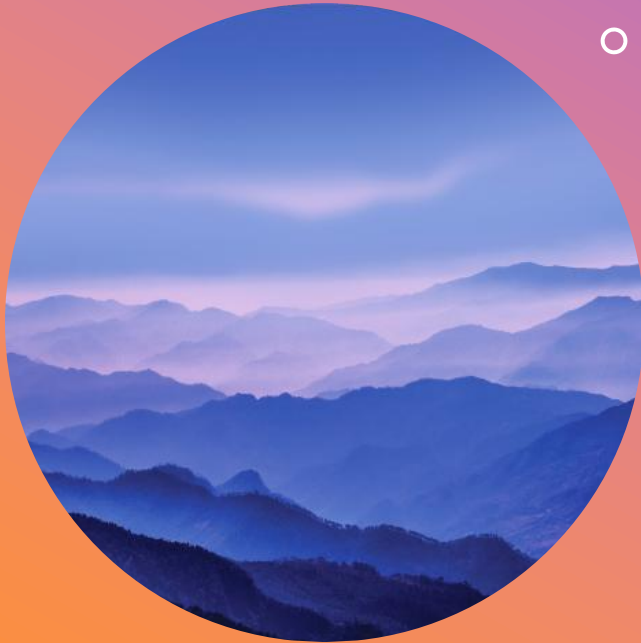
+

•

○



# SHOW US WHAT YOU GOT!



×

•

○

Send in your best 3 pictures, per quarter, for any category, so at least one may be included.

Pictures are due by the middle of each month listed:

➤ February ➤ May ➤ August ➤ November

Email: Dawn Olson, [dgodawn@gmail.com](mailto:dgodawn@gmail.com)