

KNOW YOUR CONTRACTOR

Your Trusted Advisor in the Electrical Industry.



To engineer and deliver innovative, reliable, and sustainable energy systems that power progress and resilience. Creatum is dedicated to advancing renewable generation, electrical infrastructure, and automation solutions with uncompromising quality, safety, and technical excellence—empowering communities, industries, and partners toward a cleaner energy future.



Core Expertise

- Electrical & Instrumentation for LV, MV, HV systems
- Safety, Communications & Security Systems
- QA/QC, design, and interface management
- Power system integration and testing
- DCS/PLC-based automation and control
- Site Prep, Fencing, Trenching & Material Supply



Project Execution

- Owners engineer representation
- Turnkey EPC delivery
- Management, procurement & FAT
- Installation, commissioning, testing
- Cost & schedule optimization



Renewable & Electrical Solutions

- Utility-scale & commercial solar systems
- Battery storage, inverters, transformers, grid interconnections
- Custom e-houses & skids with HVAC, fire, and security
- Electrical integration for power distribution & automation



Years of Experience



GW Energy Delivered



TRIR



OUR FOUNDATION OF EXPERIENCE

A Multi Cultural Organization



America



Venezuela



Mexico



Lebanon



Turkiye



Creatum is an integrated energy company built on innovation, technical excellence, and a shared commitment to advancing sustainable power solutions. Backed by over 75 years of combined experience, our team brings together expertise in renewable energy, electrical engineering, construction, IT, and business management. Delivering high-quality, efficient, and reliable energy systems across commercial, industrial, and utility markets.

Our professionals have led and supported projects exceeding \$100 million, collaborating with global leaders such as ABB, Eaton, Shell, Chevron, and Tesla. With backgrounds spanning engineering, operations, project controls, and business strategy, the Creatum team combines deep technical insight with data-driven decision-making and strong financial acumen. This multidisciplinary strength ensures every project is designed and executed with precision, safety, and innovation at its core.



Educationally, our team holds degrees in Electrical and Electronics Engineering, Computer Science, Management Information Systems, and Business Administration, with advanced studies in Finance, Technology Management, and Lean Six Sigma. These diverse qualifications form the foundation for our strategic, technology-driven approach to energy development.



COMPANY OVERVIEW

Primary Name(DBA): **Creatum**

Subsidiaries: **Creatum Energy, Creatum Solar**

Business Type / Structure: **LLC.**

Country Of Incorporation: **United States of America**

State Of Incorporation: **Texas**

Date Of Incorporation: **September 15, 2022**

Operational Address: **7109 Belgold Street Suite A, Houston, TX 77066, USA**

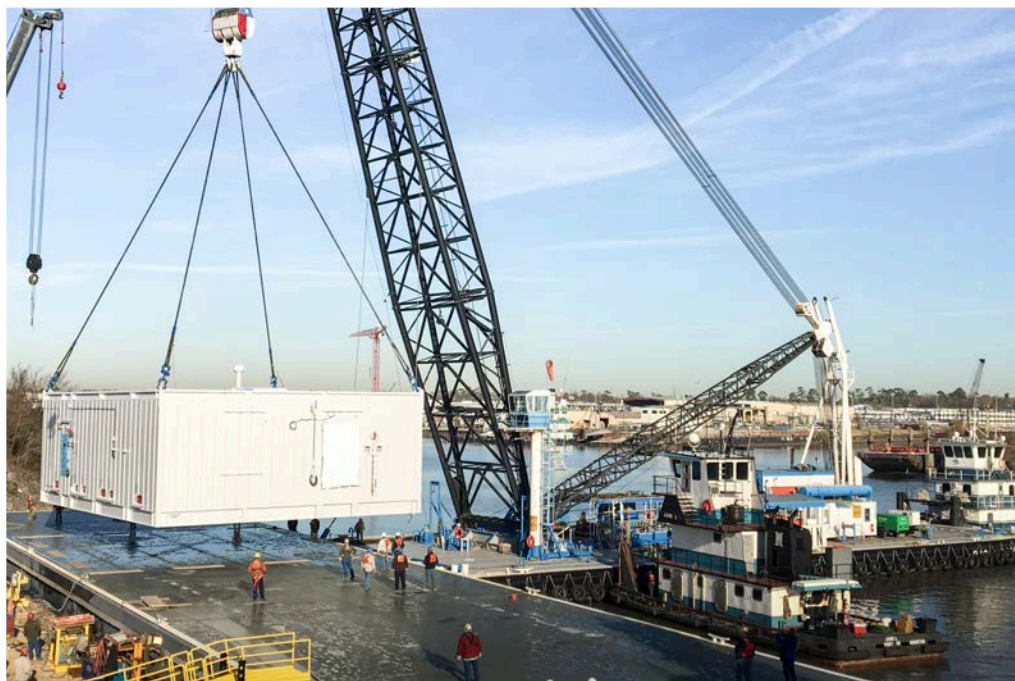
Company Websites: www.creatumenergy.com, www.creatumsolar.com

Contact Email(s): info@creatumenergy.com, info@creatumsolar.com

TDLR: **TECL39972**

Business Classification / Industry: **EPC, Electrical Contractor, HV/MV/LV, Solar/BESS, Data Center**

Key Business Activities: **Engineering, Procurement, Construction (EPC), Solar Project Development and Installation, Battery Storage, Maintenance, Testing, Inspection**



TECHNICAL CAPABILITIES

Education

BS Electrical Engineering
 BS Electronics Engineering
 BBA Management Information Sys
 BA Professional Studies, Management
 BS Nuclear Engineering
 BA Mathematics
 MBA Accounting
 MBA Finance
 MBA Technology Management
 Lean Six Sigma

Certifications

OSHA 30 - Site Execution Leads
 OSHA 10 - All Personnel
 NFPA70E - Electrical Safety
 Prysmian MV Splice
 OCC Fiber MDIS Certificate
 API Q1 9E
 ABB electrical Safety for 230kV
 BV Advanced Electrical Safety
 ABB Electrical Safety for up to 34.5 kV
 ABB Electrical Safety for Less than 1kV

In Progress

PVH (Auxiliary Systems)
 SunGrow (Regional Service Partner)
 Power Electronics (Regional Service Partner)
 Harger Grounding Certificate
 LS Electric (Regional Service Partner)
 Burndy Grounding Certificate
 Hubbell Termination & Splicing
 TE Termination & Splicing
 3M Termination & Splicing
 AVO Cable Testing and Diagnostics

CERTIFIED INSTALLER

























SYSTEMS AND SOLUTIONS

Installation Security Systems Medium Voltage Trenching

Telecom BESS HVAC Solar E-house Data Center

Fiber Optic Fire and Safety High Voltage Fencing Low Voltage

- Ehouse Building & Skids
 - Blast Rated
 - A60 / H60
 - Classified
 - Interlocking panels and crimp walls
 - HVAC Design and Supply
 - A/A Heat Exchangers
 - Fire Alarm Systems and Suppression Systems
 - Security/Access Control System
 - Perimeter Control System
 - Building Integration
 - Project Management
 - Electrical Equipment:
 - LV/MV Switchgear
 - LV/MV MCCs
 - LV/MV VFDs
 - DC UPS System
 - Batteries and Chargers
 - Power Transformers
 - SCADA/Relay Panels
 - Power Management Systems
 - Distribution Transformers
 - Distribution Panel Boards
 - Marshalling cabinets
 - Fiber Optic Panels
 - Fiber Optic Terminations and Testing
 - Workstation
 - Datacenters
 - Motors
 - Relay Programming
- Full Turnkey Projects with MV, LV and HV interconnections
 - Roof mounted racking systems
 - Ground mounted racking systems
 - Automatic single/dual axis tracking systems
 - Industrial solar design and installation
 - Plant location map
 - Daily mean radiation
 - Plant overview
 - Lightning protection, overvoltage and insulation
 - Grounding
 - Monitoring systems
 - Security and surveillance (CCTV)
 - Battery storage systems
 - Solar inverter/transformer skids
 - Peak shaving
 - Utility hookups
 - Operation, Maintenance, Service
 - Construction Installation Services
 - Clearing and Site Prep
 - Fencing
 - Roads
 - Trenching
 - Cable Installation & Termination
 - HV Substation Installation
 - MV Inverter Installation
 - Access Control
 - FDS(Functional Design Specifications)
 - LV/MV/HV Testing

UTILITY SCALE SOLAR PROJECT SPOTLIGHT



Grimes Solar Project (210 MW)



Leon Solar Park (257 MW)

COMMERCIAL SOLAR PROJECT SPOTLIGHT



ASICS - Byhalia, MS (1MW)



TARGET - Katy, TX (1MW)

INDUSTRIAL PROJECTS SPOTLIGHT

Project Work

- RGLNG - MV 35.5kV
- RGLNG - HV 138kV
- PALNG - HV 230kV
- Venture Global LNG
- Finoric - Chemical Plant
- Indorama - Chemical Reactor
- Plug Power Gateway
- Plug Power Steelhead
- Gron Fuels
- New Fortress LNG
- ENI - Mizton WHP
- Hokchi WHP
- Peregrino II
- Orascom/NatGasoline
- EPC - Lee Engineering (WAGPCO)
- EPC - ExxonMobil - Shute Creek Gas Plant
- GE Oil and Gas - San Jacinto Project
- Chevron - Gorgon LNG
- DOE - US Department of Energy Advisor
- Babcock Eagleton Pipeline Systems
- Molycorp Rare Earth Mine
- INSURCOL - PDC's Manufacturing



*Note: All Industrial Spotlight Projects listed were supported by members of our team during project execution. Including design, installation, construction and testing.