

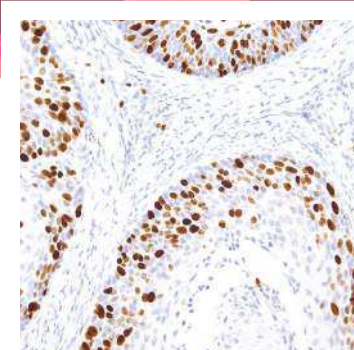


GeneAb™

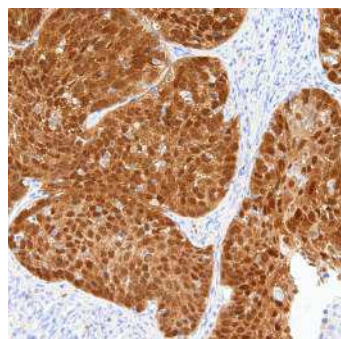
# Breast & Gynecological



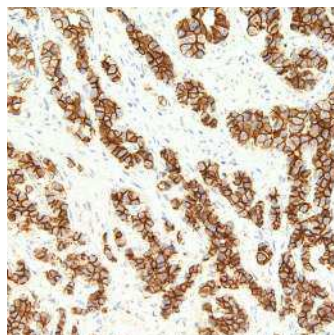
<https://onsbio.com/life-sciences>



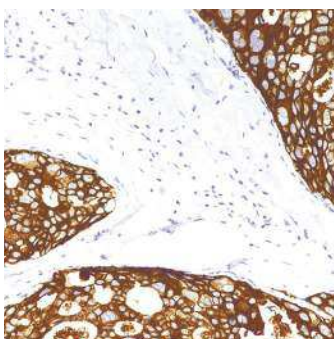
**Fig3.** GeneAb™ Ki- 67 (IHC067) on Cervical Cancer



**Fig4.** GeneAb™ p16<sup>INK4A</sup> (IHC116) on Cervical Cancer



**Fig1.** GeneAb™ E-cadherin (IHC564) on Breast



**Fig2.** GeneAb™ HER2/neu (IHC002) on Breast

## GeneAb IHC Antibodies

*Diagnostics you can trust*

GeneAb hybridomas are specifically designed, developed, screened, and validated for immunohistochemistry (IHC). Our antibodies are tested by ELISA, WB, IHC and ICC to ensure uncompromising performance in specificity and sensitivity.

### Exceeding industry gold standards:

- Over 300 tissue types (both normal and disease state) tested with each antibody.
- Immunocytochemistry (ICC) carried out using knock out / knock in cell lines established in house.
- Strict guidelines for quality assurance in place that meet ISO 13485 and MDSAP requirements.
- Blind evaluation of each slide is performed by our team of pathologists





GeneAb™

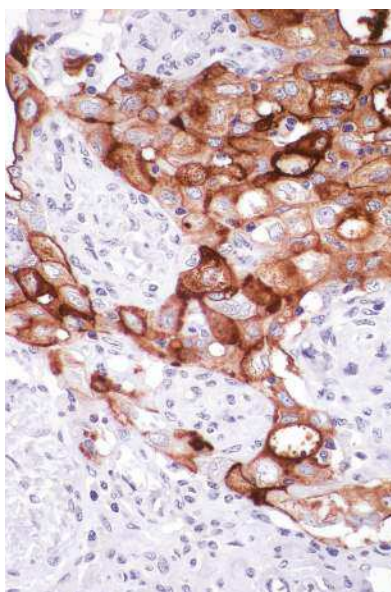
# Breast & Gynecological



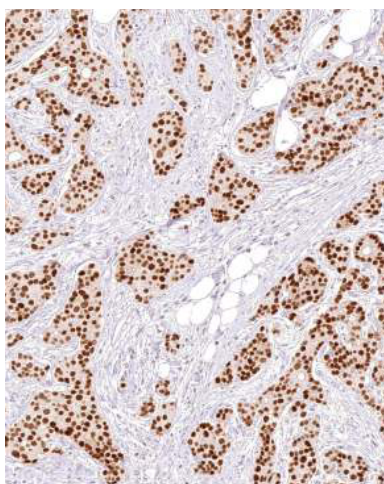
<https://onsbio.com/life-sciences>

Antibody Name	Clone #	Starting At
CA-125	IHC125	\$30
Cytokeratin 18	IHC018	\$55
E-cadherin	IHC564	\$45
GATA3	IHC583	\$120
HER2/neu	IHC002	\$60

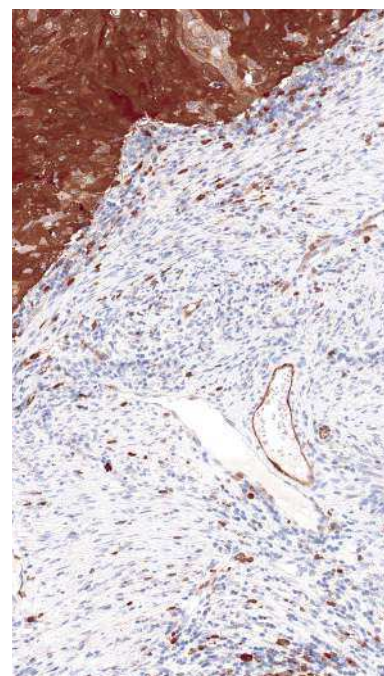
Antibody Name	Clone #	Starting At
Ki-67	IHC067	\$75
p16 <sup>INK4A</sup>	IHC116	\$140
PAX8	IHC008	\$110
Vimentin	IHC684	\$50
Stathmin	IHC667	\$145



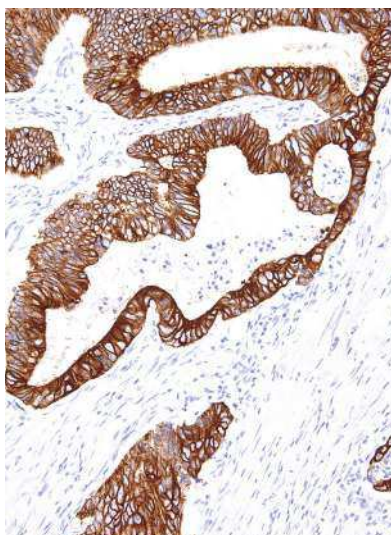
**Fig5.** GeneAb™ CA-125 (IHC125) on Ovary



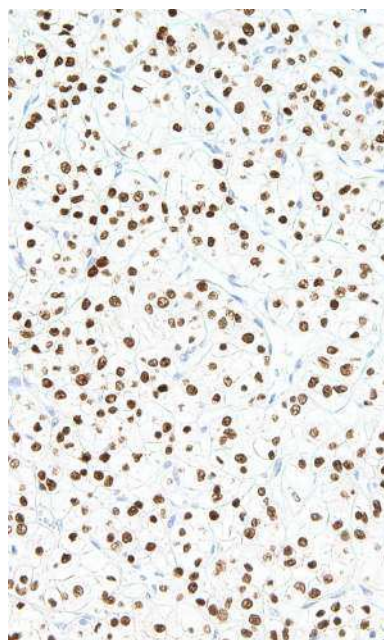
**Fig7.** GeneAb™ GATA3 (IHC583) on Breast Cancer



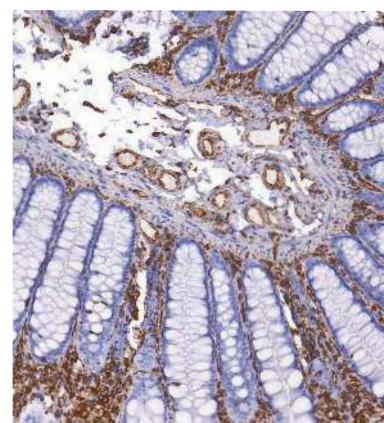
**Fig9.** GeneAb™ Stathmin (IHC667) on Cervical Cancer



**Fig6.** GeneAb™ Cytokeratin 18 (IHC018) on Colon



**Fig8.** GeneAb™ PAX8 (IHC008) on Kidney



**Fig10.** GeneAb™ Vimentin (IHC684) on Colon