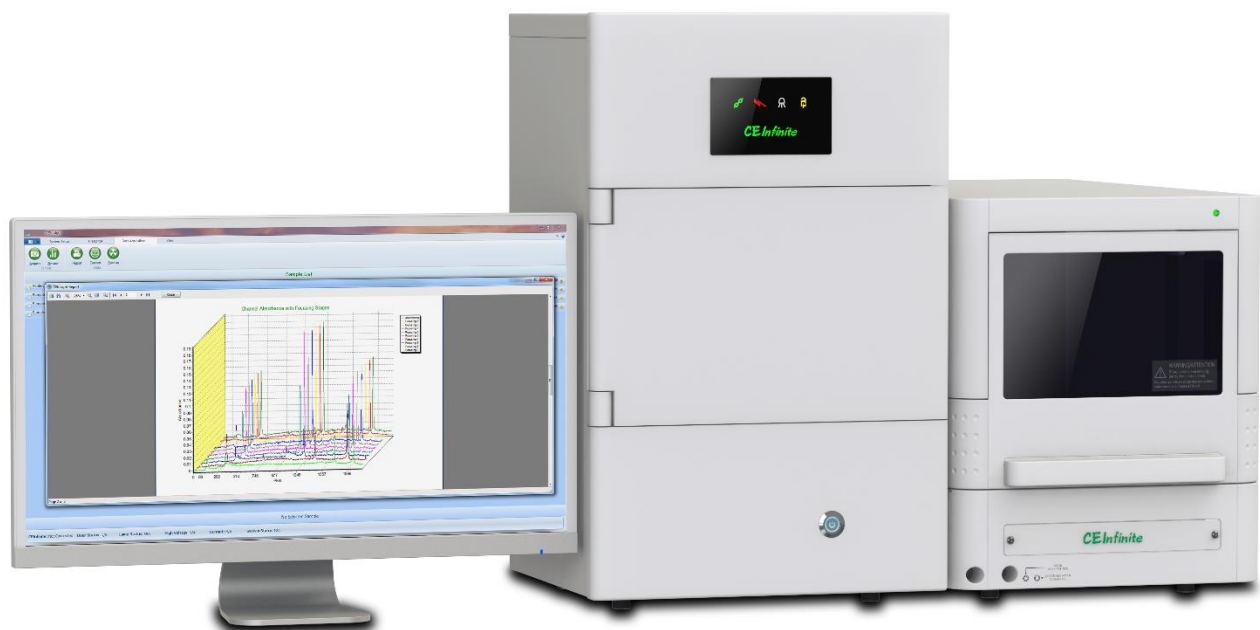


CEInfinite



Accelerate Your Biologics Development and
Protein Characterization



Authorized US distributor for
Advanced Electrophoresis Solutions Ltd.

<https://onsbio.com>

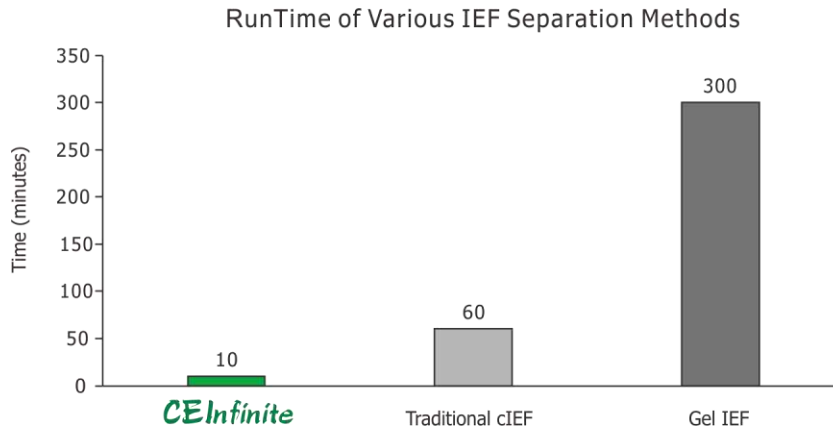
info@onsbio.com

+1-440-482-5005

© Advanced Electrophoresis Solutions Ltd. 2019

High Separation Efficiency

When compared to traditional CIEF with single-point detection and gel isoelectric focusing, proteins separated by iCIEF do not need mobilization and post-run staining steps, respectively. This significantly decreases the analysis time of each sample. Each run takes less than 10 minutes, streamlining method development from months to hours. Additionally, separation resolution can be as low as 0.01 pH.

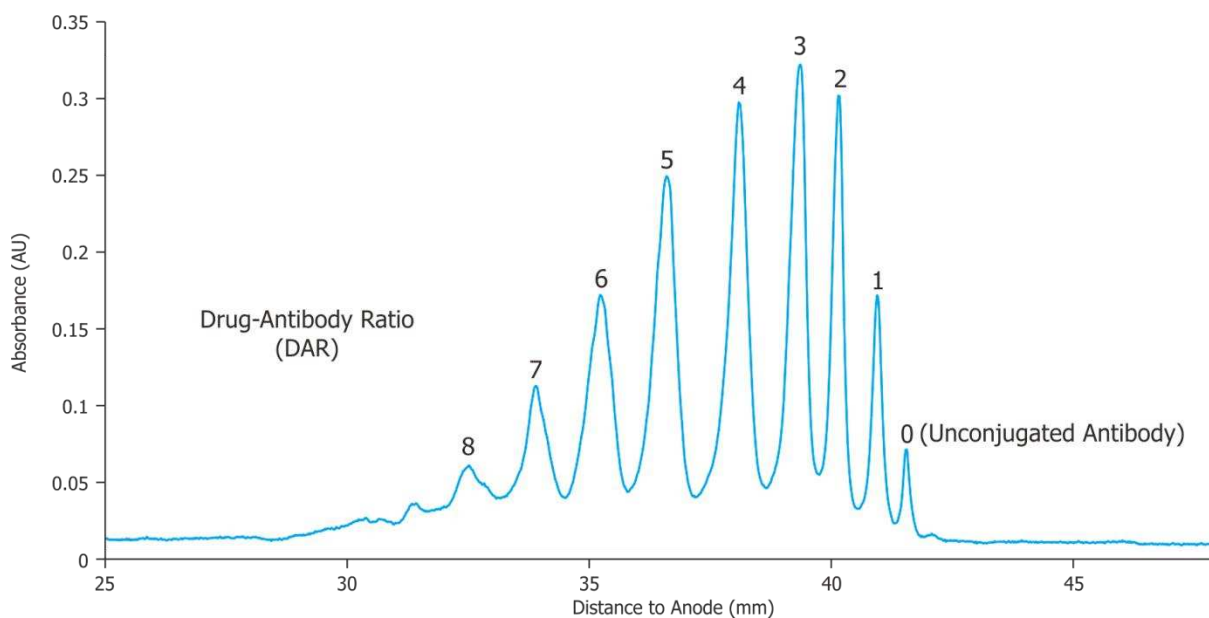


CEInfinite Analytical iCIEF for Charge Heterogeneity Analysis

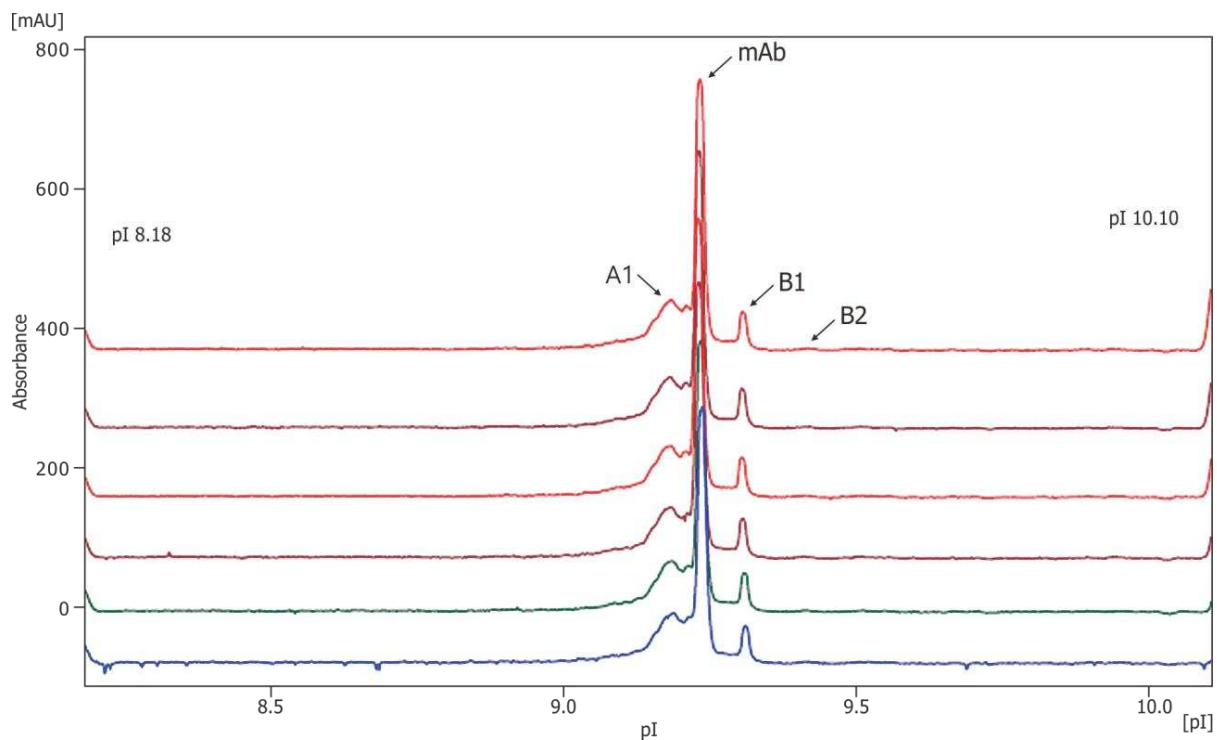
Protein charge heterogeneity profiling and characterization is essential to biologics development. This assay is performed quickly and easily, with little method development required, with the CEInfinite system. Results are generated with great reproducibility not only from within the same sample vial, but also across several sample vials, ensuring precision during both analysis and fractionation.

iCIEF Separation of Antibody-Drug Conjugates

The CEInfinite system also provides high-resolution separation of antibody-drug conjugates (ADCs).



iCIEF of NIST mAb taken from six different vials and the distribution of charge profiles



	pI		Peak Area	
	Average	% RSD	Average	% RSD
A1	9.18	0.06	32.67	1.63
mAb	9.23	0.00	59.62	0.82
B1	9.31	0.07	6.83	2.56
B2	9.41	0.05		

CEInsight Operational Software

CEInsight software fully controls the CEInfinite iCIEF system with a user-friendly GUI. The CFR control and quantitation software provides reliable operation control, highly efficient data processing, and FDA Title 21 CFR Part 11 compliance.

CEInfinite Complete iCIEF Consumable Line

Cartridges



CEInfinite cartridges are the world's first WCID imaging cartridges for direct coupling to a mass spectrometer. In addition to fluorocarbon (FC) and polyacrylamide (PA), proprietary acrylamide derivatives (AD) provide a highly reliable molecular layer coating suitable for separations between pH 2-11. These cartridges deliver high sensitivity and performance, and the easy flow along the capillary makes for simpler, faster sample injection with less clogging. Cartridges are available with various inner diameters for increased sensitivity and capacity.

AESlytes



AESlytes are synthesized strictly to ensure a high performance CIEF separation. Their low interaction with proteins increases resolving power and AESlytes do not strongly absorb UV, eliminating baseline noise. Finally, their linear pH gradient makes for a remarkably accurate pI calibration.

pI Markers



Reference standard isoelectric point (pI) markers are essential for calibrating your iCIEF. The CEInfinite system brings you the most comprehensive, evenly spaced, and thoroughly calibrated pI markers in the world. All CEInfinite pI markers come in a ready-to-use 100X concentration and have long shelf lives, reducing waste and saving you restocking time.

Electrolytes & Polymer Solutions



Manufactured under strict quality control guidelines, CEInfinite consumables will save you time as well and eliminate variability for a more reproducible result. All CEInfinite test kits, electrolytes, and methylcellulose solutions are fully tested and certified.

Product Specifications

iCIEF Instrument

Detection Mode	Whole column, sCMOS imaging technology
Height x Width x Depth	54 cm x 33 cm x 30 cm
Weight	30 pounds (14 kg)
Detection Dynamic Range	250 (0.004 – 1.0 AU, 280 nm)
High Voltage Range	0 – 3000 Volts (Continuously Adjustable)
Sample Throughput	Up to 12 injections per hour
Working Temperature	15 - 35°C
Humidity	20 - 80% RH
Electrical Requirement	100/240 VAC, 50 - 60 Hz
Exposure Time	0.02 – 99.9 ms
ADC Maximum	16386 AU
Operation Mode	Manual or Automatic
Detector Noise	Less than 0.001 AU, 280 nm
Separation pH Range	2.1 – 11.1

Autosampler

	Model 840
Sample Capacity	84+3 vial tray, 96 well plate
Typical Sample Volume	15 µL
Electrical Requirement	95 – 240 VAC, 50 – 60 Hz
Height x Width x Depth	36 cm x 30 cm x 57.5 cm
Weight	46 pounds (21 kg)
Working Temperature	10 - 40°C
Humidity	20 – 80% RH

Advanced Electrophoresis Solutions Ltd.

Advanced Electrophoresis Solutions Ltd. (AES) was started to provide the biopharmaceutical industry with pioneering iCIEF technology that is also reliable and high-throughput. Located in Canada's Technology Triangle, AES is comprised of dedicated engineers, scientists, and support staff with the primary goal of solving iCIEF problems currently facing scientists as well as preparing for those on the horizon.



**Authorized US distributor for all
Advanced Electrophoresis Solutions
equipment and consumables**

**For additional information,
pricing quotation & demo contact**

ONS BIO LLC

**<https://onsbio.com>
info@onsbio.com
+1-440-482-5005**



Advanced Electrophoresis Solutions Ltd.

**1600 Industrial Road
Cambridge, Ontario
N3H 4W5 Canada**