

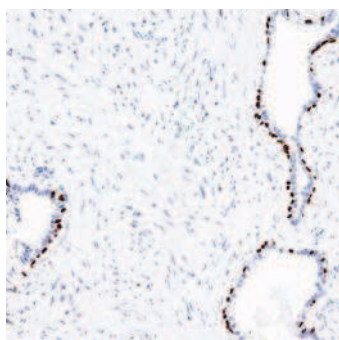


GeneAb™

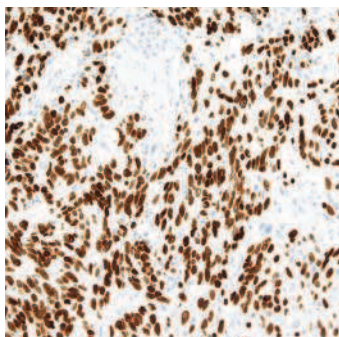
# Dermatopathology



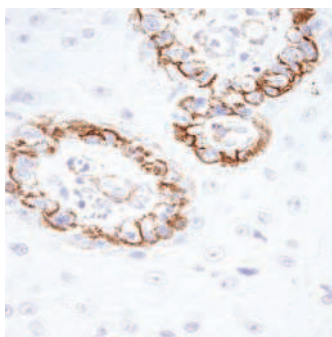
<https://onsbio.com/life-sciences>



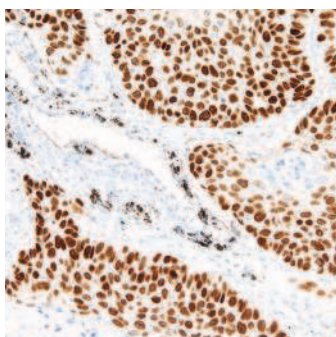
**Fig3.** GeneAb™ p63 (IHC063) on Prostate Cancer



**Fig4.** GeneAb™ SOX10 (IHC010) on Melanoma



**Fig1.** GeneAb™ KBA.62 (Melanoma Associated Antigen) (IHC062) on Melanoma



**Fig2.** GeneAb™ p40 (IHC040) on Lung



## GeneAb IHC Antibodies

*Diagnostics you can trust*

GeneAb hybridomas are specifically designed, developed, screened, and validated for immunohistochemistry (IHC). Our antibodies are tested by ELISA, WB, IHC and ICC to ensure uncompromising performance in specificity and sensitivity.

### Exceeding industry gold standards:

- Over 300 tissue types (both normal and disease state) tested with each antibody.
- Immunocytochemistry (ICC) carried out using knock out / knock in cell lines established in house.
- Strict guidelines for quality assurance in place that meet ISO 13485 and MDSAP requirements.
- Blind evaluation of each slide is performed by our team of pathologists





GeneAb™

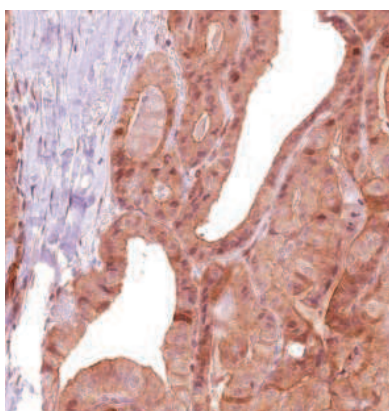
# Dermatopathology



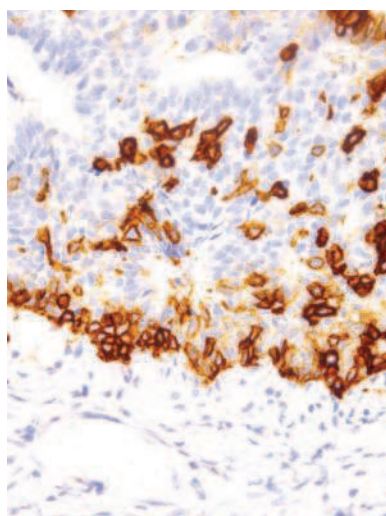
<https://onsbio.com/life-sciences>

Antibody Name	Clone #	Starting At
BG8, Lewis Y	IHC517	\$115
BRAF V600E	IHC600	\$210
Collagen Type IV	IHC549	\$70
KBA.62 (Melanoma Associated Antigen)	IHC062	\$100
N-cadherin	IHC636	\$150
Nerve Growth Factor Receptor (NGFR)	IHC637	\$115

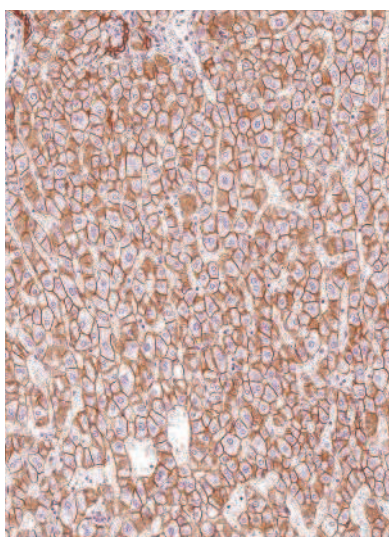
Antibody Name	Clone #	Starting At
Nestin	IHC638	\$175
p40	IHC040	\$130
p63	IHC063	\$140
Podoplanin	IHC650	\$85
S-100	IHC100	\$55
SOX10	IHC010	\$100
Vimentin	IHC684	\$50



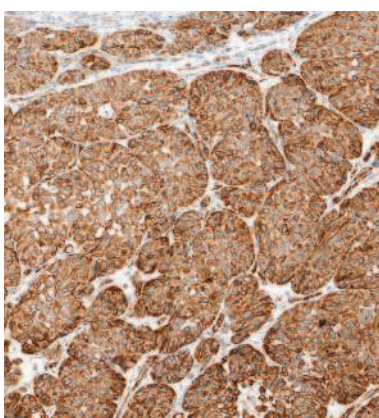
**Fig5.** GeneAb™ BG8, Lewis Y (IHC517) on Thyroid Cancer



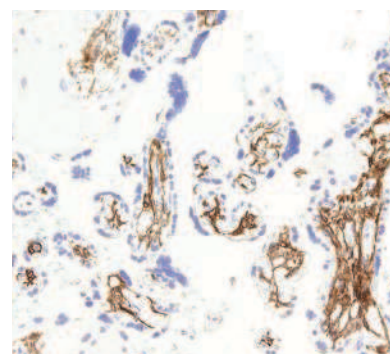
**Fig7.** GeneAb™ Nerve Growth Factor Receptor (NGFR) (IHC637) on Cervix



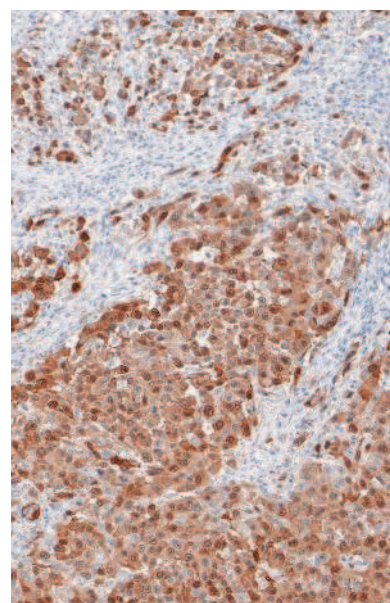
**Fig6.** GeneAb™ N-cadherin (IHC636) on Liver



**Fig8.** GeneAb™ Nestin (IHC638) on Melanoma



**Fig9.** GeneAb™ Podoplanin (IHC650) on Placenta



**Fig10.** GeneAb™ S-100 (IHC100) on Melanoma