



GeneAb™

Genitourinary (GU)



<https://onsbio.com/life-sciences>

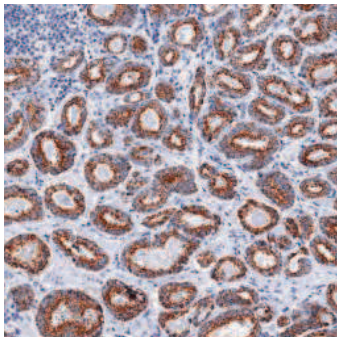
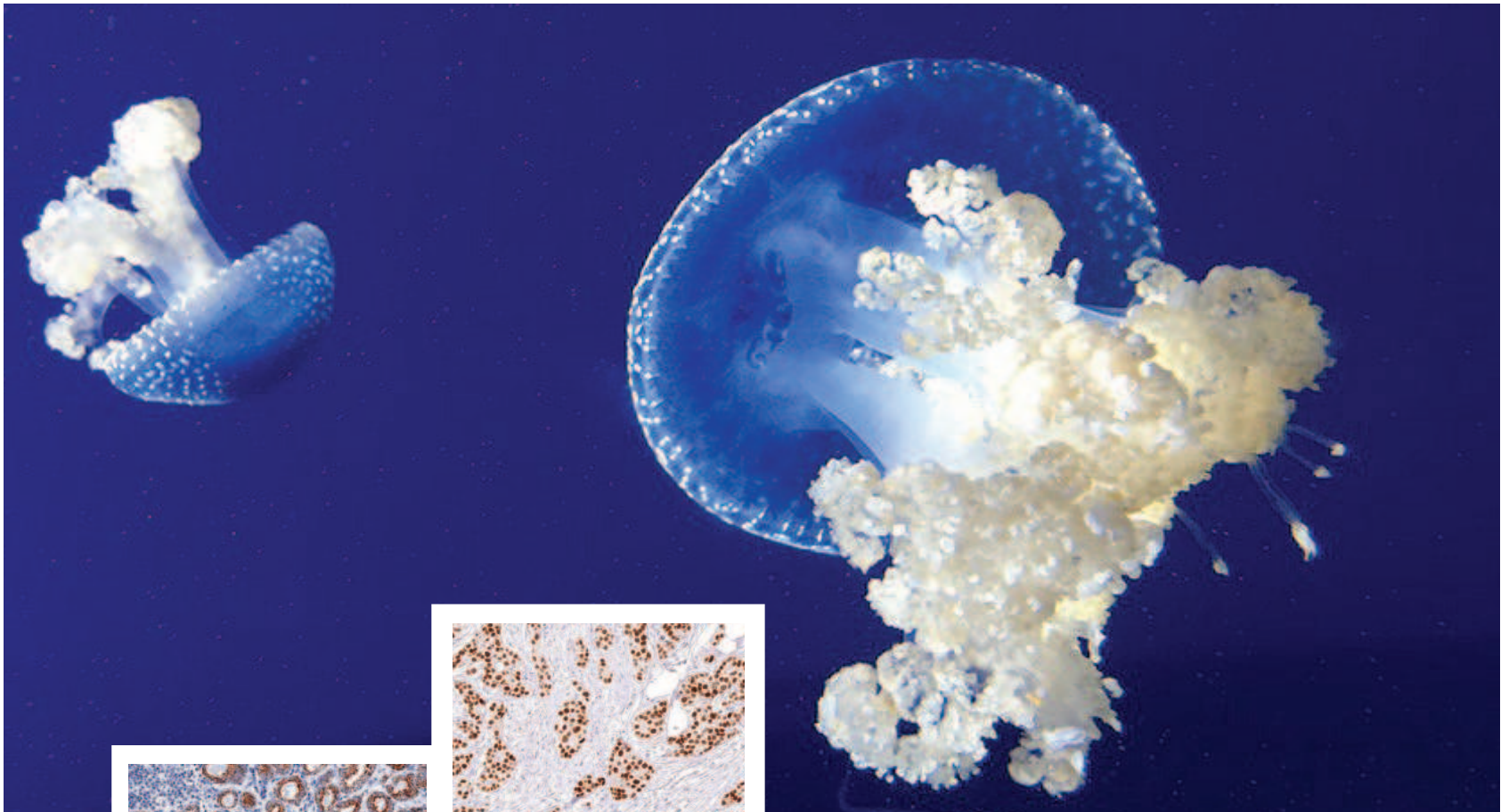


Fig3. GeneAb™ p504s (IHC504) on Prostate Cancer

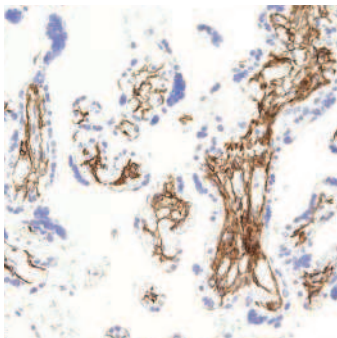


Fig4. GeneAb™ Podoplanin (IHC650) on Placenta

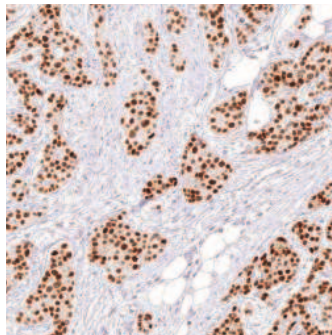


Fig1. GeneAb™ GATA3 (IHC583) on Breast Cancer

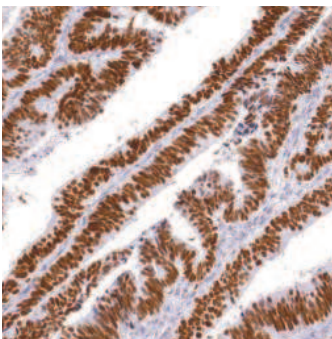


Fig2. GeneAb™ p53 (IHC053) on Colon Cancer



GeneAb IHC Antibodies

Diagnostics you can trust

GeneAb hybridomas are specifically designed, developed, screened, and validated for immunohistochemistry (IHC). Our antibodies are tested by ELISA, WB, IHC and ICC to ensure uncompromising performance in specificity and sensitivity.

Exceeding industry gold standards:

- Over 300 tissue types (both normal and disease state) tested with each antibody.
- Immunocytochemistry (ICC) carried out with knock out / knock in cell lines established in house.
- Strict guidelines for quality assurance in place that meet ISO 13485 and MDSAP requirements.
- Blind evaluation of each slide is performed by our team of pathologists

Antibody Name	Clone #	Starting At
BRAF V600E	IHC600	\$210
CD44	IHC044	\$45
COX-2	IHC550	\$65
Cytokeratin 18	IHC018	\$55
GATA3	IHC583	\$120
Ki-67	IHC067	\$75
Oct-4	IHC643	\$80
p16 ^{INK4A}	IHC116	\$140
p504s	IHC504	\$80

Antibody Name	Clone #	Starting At
p53	IHC053	\$50
p63	IHC063	\$140
Podoplanin	IHC650	\$85
Progesterone Receptor	IHC651	\$80
PSA	IHC654	\$45
PSAP	IHC655	\$45
SALL4	IHC659	\$60
Vimentin	IHC684	\$50

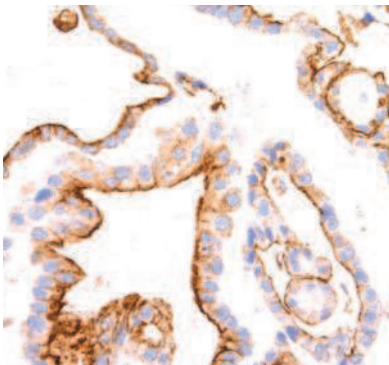


Fig5. GeneAb™ BRAF V600E (IHC600) on Thyroid Gland

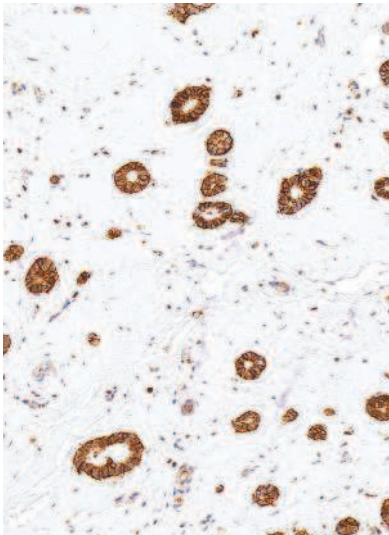


Fig6. GeneAb™ CD44 (IHC044) on Breast Cancer

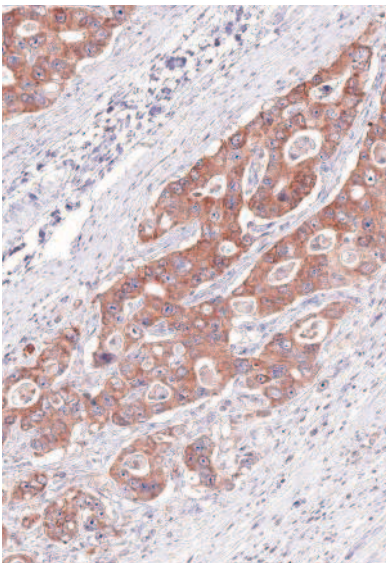


Fig7. GeneAb™ COX-2 (IHC550) on Colon Cancer

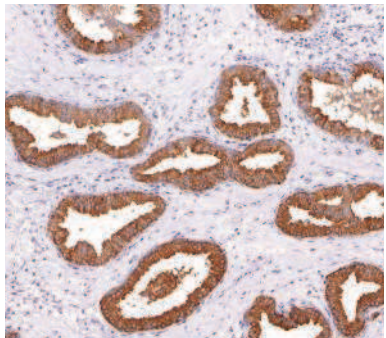


Fig8. GeneAb™ PSA (IHC654) on Prostate

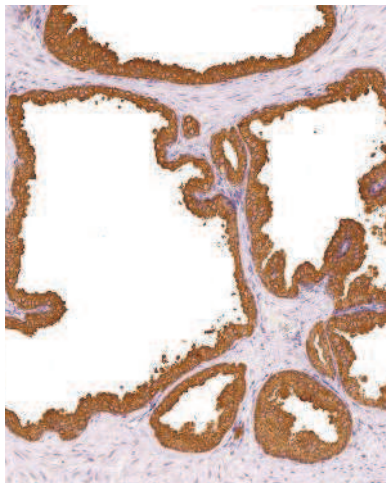


Fig9. GeneAb™ PSAP (IHC655) on Prostate

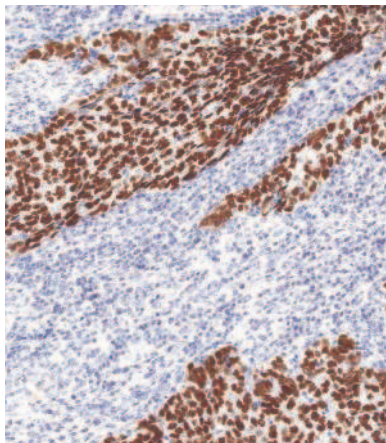


Fig10. GeneAb™ SALL4 (IHC659) on Testicular Cancer