



GeneAb™

Soft Tissue



<https://onsbio.com/life-sciences>

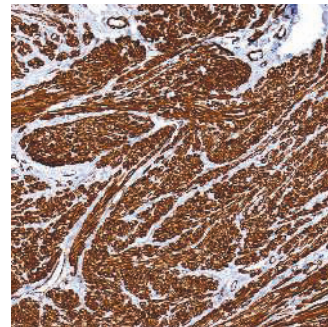
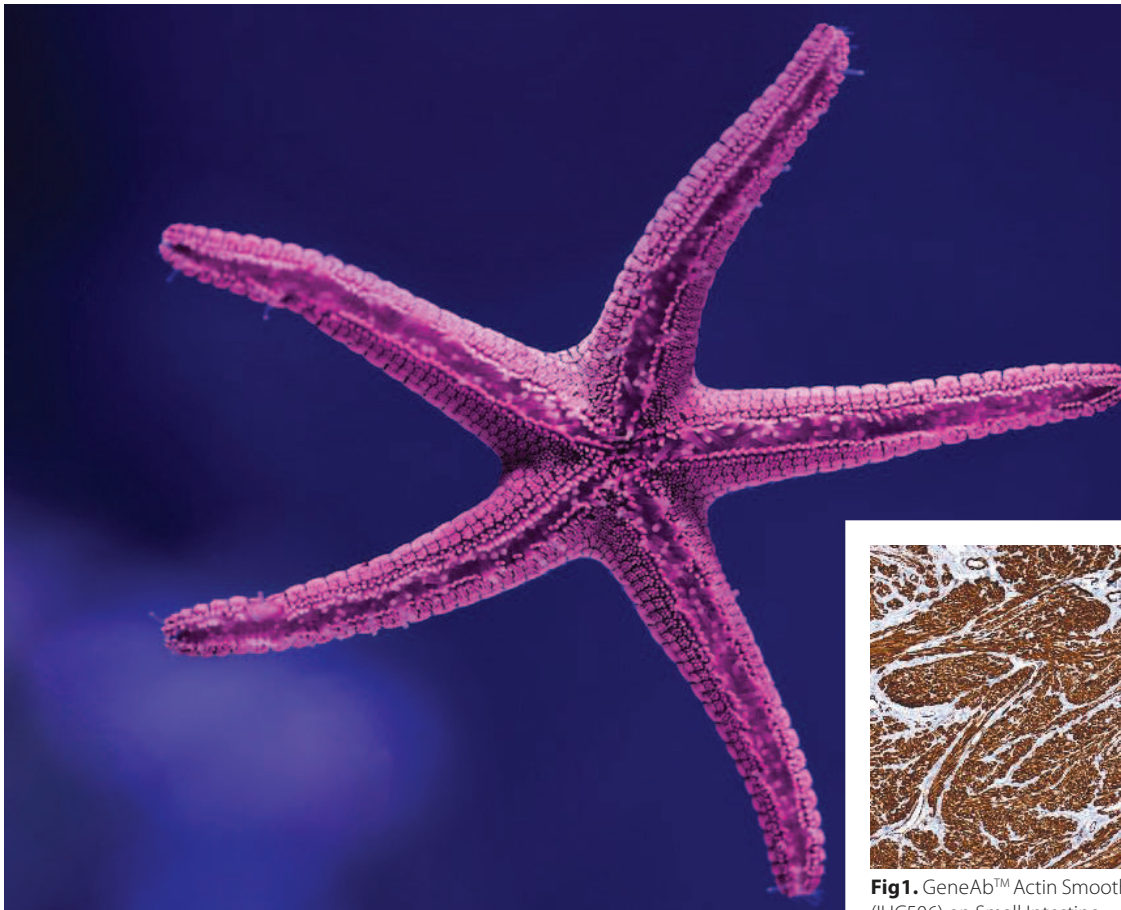


Fig1. GeneAb™ Actin Smooth Muscle (IHC506) on Small Intestine

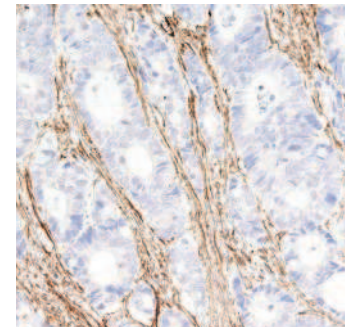


Fig2. GeneAb™ Fibronectin (IHC575) on Colon Cancer

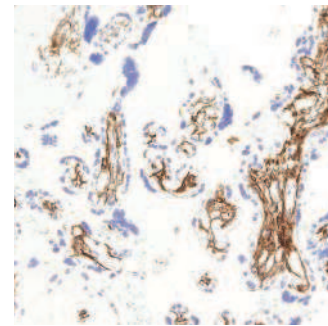


Fig4. GeneAb™ Podoplanin (IHC650) on Placenta

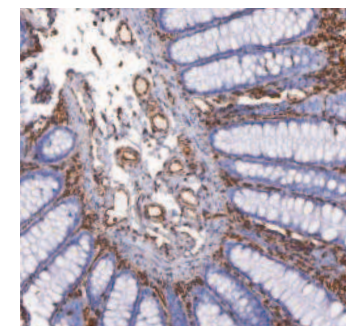


Fig5. GeneAb™ Vimentin (IHC684) on Colon

GeneAb IHC Antibodies

Diagnostics you can trust

GeneAb hybridomas are specifically designed, developed, screened, and validated for immunohistochemistry (IHC). Our antibodies are tested by ELISA, WB, IHC and ICC to ensure uncompromising performance in specificity and sensitivity.

Exceeding industry gold standards:

- Over 300 tissue types (both normal and disease state) tested with each antibody.
- Immunocytochemistry (ICC) carried out with knock out / knock in cell lines established in house.
- Strict guidelines for quality assurance in place that meet ISO 13485 and MDSAP requirements.
- Blind evaluation of each slide is performed by our team of pathologists

Antibody Name	Clone #	Starting At
Actin, Smooth Muscle	IHC506	\$50
Fibronectin	IHC575	\$30
Myogenin	IHC631	\$40
Podoplanin	IHC650	\$85
Vimentin	IHC684	\$50