



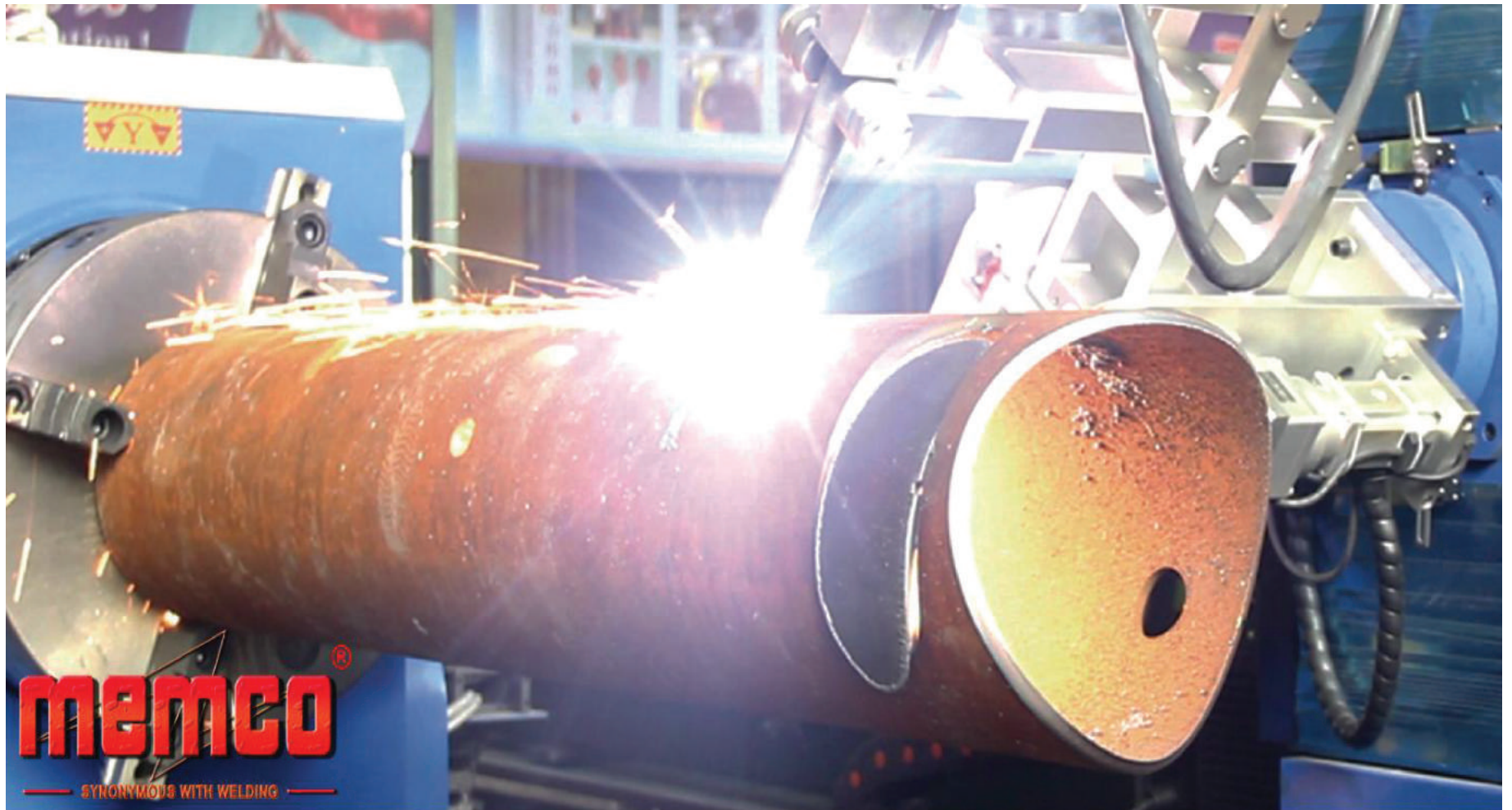
MEMCO

— SYNONYMOUS WITH WELDING —



Miraj Electrical & Mechanical Co. Pvt. Ltd
2 Swastik Chambers, Chembur, Mumbai 400071, India
Tel:(022) 697 8091/92/93, 2522 2818/2702
Fax:91-22-2522 6661

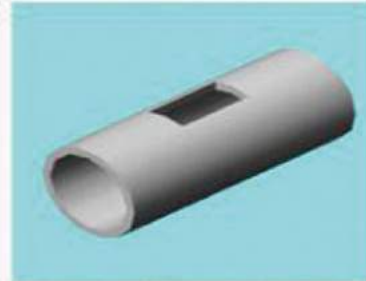
Email: memcosales@memcoin.com
Website : www.memcoin.com



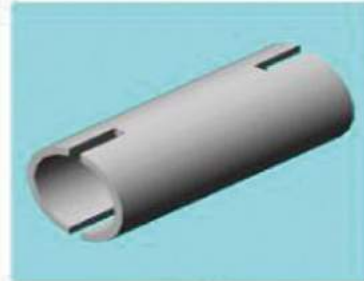
memco[®]
— SYNONYMOUS WITH WELDING —



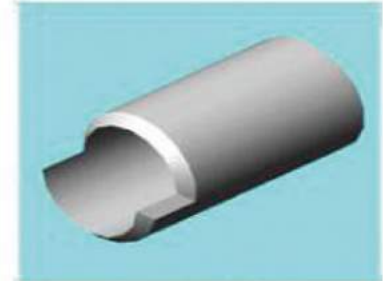
Joint hole cuts



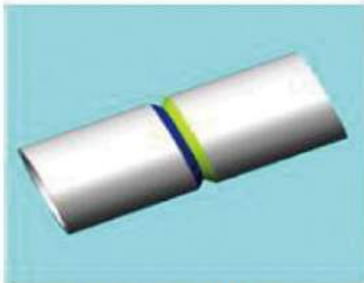
Rectangular hole cuts



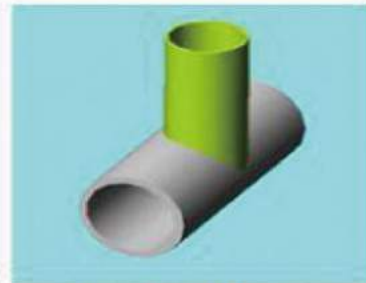
Slot joints



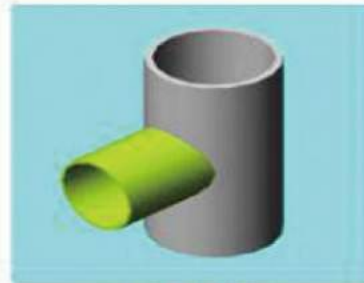
Crank joints



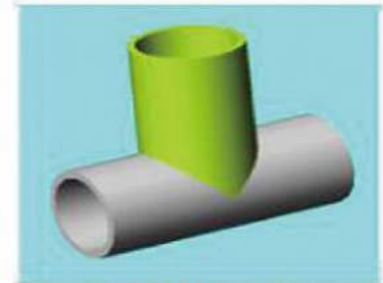
Staight end cuts



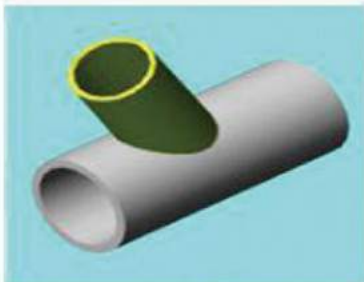
Off-center joints



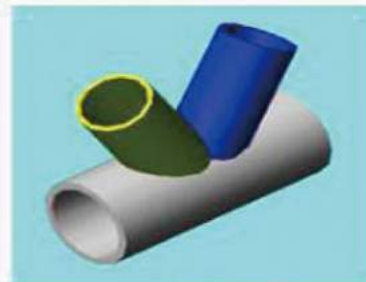
T-joint cuts



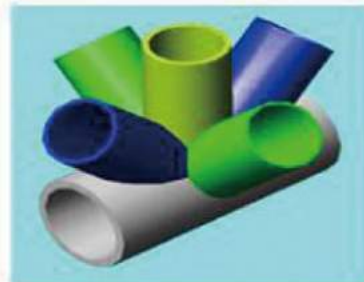
V-shape edge



Slant joint cuts



Double joints



Multiple joint cuts



Miter end cuts



Pipe Profiling Expert

MEMCO[®]
— SYNONYMOUS WITH WELDING —



Technical Details

No	Item	Parameters	
1.	Round Pipe diameter	50~630mm	
2.	Cutting length	6000mm	
3.	Cutting mode	Plasma and flame (oxy-fuel)	
4.	Control system	Advantech IPC with MEMCO PIP	
5.	Programming software	Curve library, AutoCAD	
6.	Driving system	Japan Panasonic Servo Motor	
7.	Cutting speed	10 ~ 2000mm/min	
8.	Travelling speed	10 ~ 6000 mm/min	
9.	The axial swing Angle of the cutting torch	$\alpha = \pm 60^{\circ}$	
10.	The Radial swing Angle of cutting torch	$\beta = \pm 55^{\circ}$	
11.	Cutting length accuracy	$\pm 1.5\text{mm}$	
12.	Oblique crossing angle	$15^{\circ} - 170^{\circ}$	
13.	Angle error	$\pm 1^{\circ}$	
14.	Bevel angle	Plasma cutting $\leq \pm 45^{\circ}$	flame cutting $\pm 60^{\circ}$

Highly Accurate & Versatile



MEMCO[®]
— SYNONYMOUS WITH WELDING —