



## MEM 400 SYNERGIC

### TECHNICAL SPECIFICATION

<b>Input Voltage (VAC)</b>	400 ± %10
<b>Output Range (A)</b>	20-400
<b>Duty Cycle (40°C)</b>	%60 : 400 A, 32.0 V %100 : 300 A, 27.5 V
<b>Max. Input Power (kVA)</b>	17.8
<b>Open Circuit Voltage (VDC)</b>	90
<b>Dimensions (WxHxL, mm)</b>	530 x 1270 x 1050
<b>Net Weight (kg)</b>	73
<b>Standard Accessories</b>	3 m Power Cable (4 x 4 mm <sup>2</sup> ) 3 m Ground Cable (50 mm <sup>2</sup> ) 5 m Extension Package Gas Regulator 4 m 400 A Torch Trolley



## MEM 400 W SYNERGIC

### TECHNICAL SPECIFICATION

<b>Input Voltage (VAC)</b>	400 ± %10
<b>Output Range (A)</b>	20-400
<b>Duty Cycle (40°C)</b>	%60 : 400 A, 32.0 V %100 : 300 A, 27.5 V
<b>Max. Input Power (kVA)</b>	17.8
<b>Open Circuit Voltage (VDC)</b>	90
<b>Dimensions (WxHxL, mm)</b>	530 x 1270 x 1050 110
<b>Net Weight (kg)</b>	3 m Power Cable (4 x 4 mm <sup>2</sup> )
<b>Standard Accessories</b>	3 m Ground Cable (50 mm <sup>2</sup> ) 5 m Extension Package Gas Regulator 4 m 400 A Torch Trolley





## MEM 400 PULSE RAPID

### TECHNICAL SPECIFICATIONS

<b>Input Voltage (VAC)</b>	400 ± %10
<b>Output Range (A)</b>	20-400
<b>Duty Cycle (40°C)</b>	%60 : 400 A, 32.0 V %100 : 300 A, 27.5 V
<b>Max. Input Power (kVA)</b>	17.8
<b>Open Circuit Voltage (VDC)</b>	90
<b>Dimensions (WxHxL, mm)</b>	530 x 1270 x 1050
<b>Net Weight (kg)</b>	73
<b>Standard Accessories</b>	3 m Power Cable (4 x 4 mm <sup>2</sup> ) 3 m Ground Cable (50 mm <sup>2</sup> ) 5 m Extension Package Gas Regulator 4 m 400 A Torch Trolley



## MEM 400 W PULSE RAPID

### TECHNICAL SPECIFICATIONS

<b>Input Voltage (VAC)</b>	400 ± %10
<b>Output Range (A)</b>	20-400
<b>Duty Cycle (40°C)</b>	%60 : 400 A, 32.0 V %100 : 300 A, 27.5 V
<b>Max. Input Power (kVA)</b>	17.8
<b>Open Circuit Voltage (VDC)</b>	90
<b>Dimensions (WxHxL, mm)</b>	530 x 1270 x 1050
<b>Net Weight (kg)</b>	110
<b>Standard Accessories</b>	3 m Power Cable (4 x 4 mm <sup>2</sup> ) 3 m Ground Cable (50 mm <sup>2</sup> ) 5 m Extension Package Gas Regulator 4 m 400 A Torch Trolley





## MEM 400 PULSE

### TECHNICAL SPECIFICATIONS

<b>Input Voltage (VAC)</b>	400 ± %10
<b>Output Range (A)</b>	20-400
<b>Duty Cycle (40°C)</b>	%60 : 400 A, 32.0 V %100 : 300 A, 27.5 V
<b>Max. Input Power (kVA)</b>	17.8
<b>Open Circuit Voltage (VDC)</b>	90
<b>Dimensions (WxHxL, mm)</b>	530 x 1270 x 1050
<b>Net Weight (kg)</b>	73
<b>Standard Accessories</b>	3 m Power Cable (4 x 4 mm <sup>2</sup> ) 3 m Ground Cable (50 mm <sup>2</sup> ) 5 m Extension Package Gas Regulator 4 m 400 A Torch Trolley



## MEM 400 W PULSE

### TECHNICAL SPECIFICATIONS

<b>Input Voltage (VAC)</b>	400 ± %10
<b>Output Range (A)</b>	20-400
<b>Duty Cycle (40°C)</b>	%60 : 400 A, 32.0 V %100 : 300 A, 27.5 V
<b>Max. Input Power (kVA)</b>	17.8
<b>Open Circuit Voltage (VDC)</b>	90
<b>Dimensions (WxHxL, mm)</b>	530 x 1270 x 1050
<b>Net Weight (kg)</b>	110
<b>Standard Accessories</b>	3 m Power Cable (4 x 4 mm <sup>2</sup> ) 3 m Ground Cable (50 mm <sup>2</sup> ) 5 m Extension Package Gas Regulator 4 m 400 A Torch Trolley





## MEM 500 W SYNERGIC

### TECHNICAL SPECIFICATIONS

<b>Input Voltage (VAC)</b>	400 ± %10
<b>Output Range (A)</b>	20-500
<b>Duty Cycle (40°C)</b>	%60 : 500 A, 36.5 V
	%100 : 400 A, 32.0 V
<b>Max. Input Power (kVA)</b>	24.8
<b>Open Circuit Voltage (VDC)</b>	90
<b>Dimensions (WxHxL, mm)</b>	530 x 1270 x 1050
<b>Net Weight (kg)</b>	110
<b>Standard Accessories</b>	3 m Power Cable (4 x 6 mm <sup>2</sup> )
	3 m Ground Cable (70 mm <sup>2</sup> )
	5 m Extension Package
	Gas Regulator
	3 m 400 A Torch
	Trolley

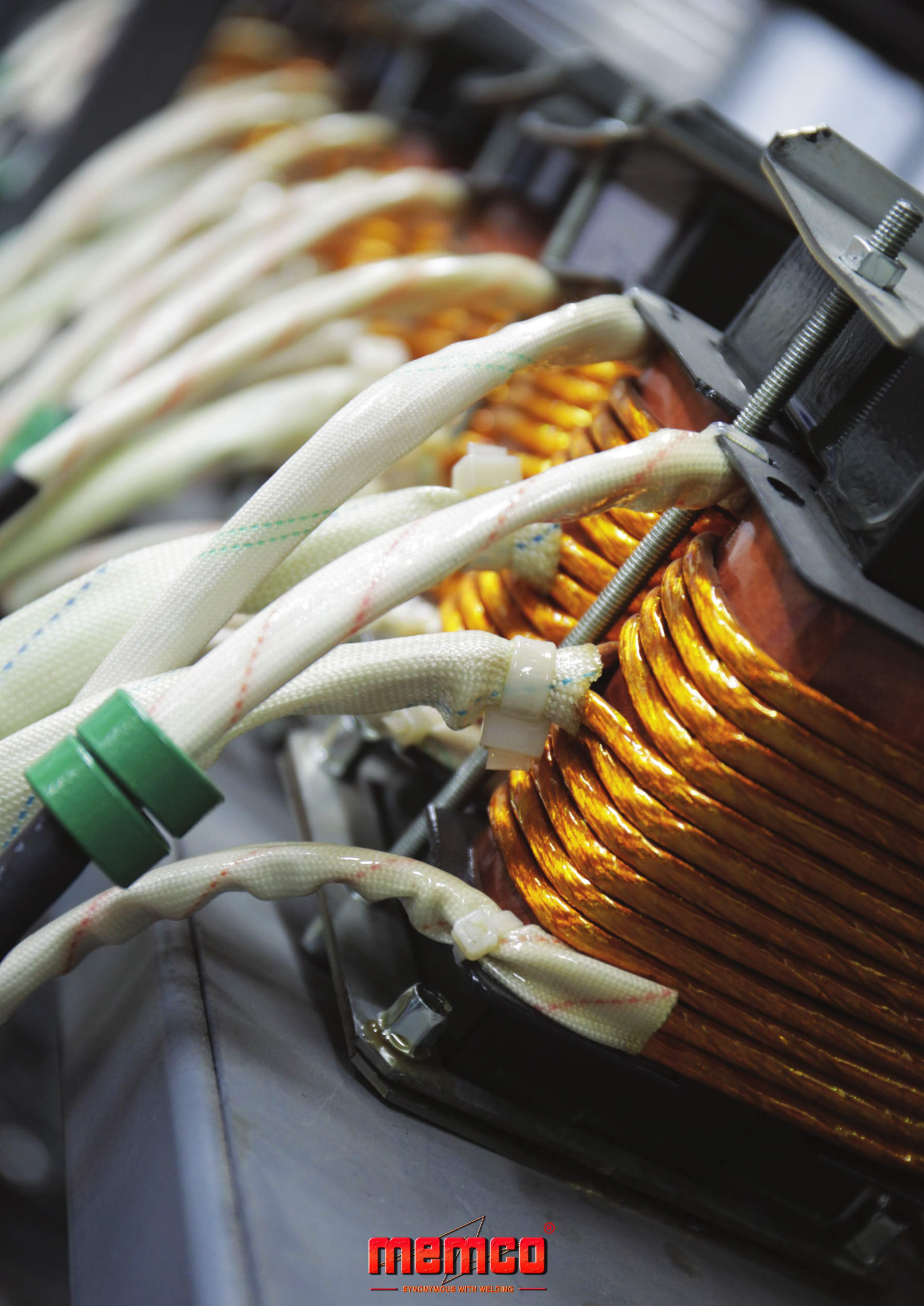


## MEM 500 W PULSE RAPID

### TECHNICAL SPECIFICATIONS

<b>Input Voltage (VAC)</b>	400 ± %10
<b>Output Range (A)</b>	20-500
<b>Duty Cycle (40°C)</b>	%60 : 500 A, 36.5 V
	%100 : 400 A, 32.0 V
<b>Max. Input Power (kVA)</b>	24.8
<b>Open Circuit Voltage (VDC)</b>	90
<b>Dimensions (WxHxL, mm)</b>	530 x 1270 x 1050
<b>Net Weight (kg)</b>	110
<b>Standard Accessories</b>	3 m Power Cable (4 x 6 mm <sup>2</sup> )
	3 m Ground Cable (70 mm <sup>2</sup> )
	5 m Extension Package
	Gas Regulator
	3 m 400 A Torch
	Trolley







# MEMCO

— SYNONYMOUS WITH WELDING —

## MEM 500 W PULSE

### TECHNICAL SPECIFICATIONS

<b>Input Voltage (VAC)</b>	400 ± %10
<b>Output Range (A)</b>	20-500
<b>Duty Cycle (40°C)</b>	%60 : 500 A, 36.5 V %100 : 400 A, 32.0 V
<b>Max. Input Power (kVA)</b>	24.8
<b>Open Circuit Voltage (VDC)</b>	90
<b>Dimensions (WxHxL, mm)</b>	530 x 1270 x 1050
<b>Net Weight (kg)</b>	110
<b>Standard Accessories</b>	3 m Power Cable (4 x 6 mm <sup>2</sup> ) 3 m Ground Cable (70 mm <sup>2</sup> ) 5 m Extension Package Gas Regulator 3 m 400 A Torch Trolley



## MEM 501 BASIC

### TECHNICAL SPECIFICATIONS

<b>Input Voltage (VAC)</b>	400 ± %10
<b>Output Range (A)</b>	20-500
<b>Duty Cycle (40°C)</b>	%60 : 500 A, 36.5 V %100 : 400 A, 32.0 V
<b>Max. Input Power (kVA)</b>	24.8
<b>Open Circuit Voltage (VDC)</b>	90
<b>Dimensions (WxHxL, mm)</b>	520 x 1250 x 1050
<b>Net Weight (kg)</b>	73
<b>Standard Accessories</b>	3 m Power Cable (4 x 6 mm <sup>2</sup> ) 3 m Ground Cable (70 mm <sup>2</sup> ) 5 m Extension Package Gas Regulator 4 m 400 A Torch Trolley





## MEM 501 W BASIC

### TECHNICAL SPECIFICATIONS

<b>Input Voltage (VAC)</b>	400 ± %10
<b>Output Range (A)</b>	20-500
<b>Duty Cycle (40°C)</b>	%60 : 500 A, 36.5 V %100 : 400 A, 32.0 V
<b>Max. Input Power (kVA)</b>	24.8
<b>Open Circuit Voltage (VDC)</b>	90
<b>Dimensions (WxHxL, mm)</b>	520 x 1250 x 1050
<b>Net Weight (kg)</b>	110
<b>Standard Accessories</b>	3 m Power Cable (4 x 6 mm <sup>2</sup> ) 3 m Ground Cable (70 mm <sup>2</sup> ) 5 m Extension Package Gas Regulator 4 m 400 A Torch Trolley



## MEM 600 W PULSE

### TECHNICAL SPECIFICATIONS

<b>Input Voltage (VAC)</b>	400 ± %10
<b>Output Range (A)</b>	40-600
<b>Duty Cycle (40°C)</b>	%60 : 600 A, 41.0 V %100 : 500 A, 36.5 V
<b>Max. Input Power (kVA)</b>	32.7
<b>Open Circuit Voltage (VDC)</b>	90
<b>Dimensions (WxHxL, mm)</b>	600 x 1200 x 1050
<b>Net Weight (kg)</b>	120
<b>Standard Accessories</b>	3 m Power Cable (4 x 6 mm <sup>2</sup> ) 3 m Ground Cable (95 mm <sup>2</sup> ) 5 m Extension Package Gas Regulator 4 m 400 A Torch Trolley

