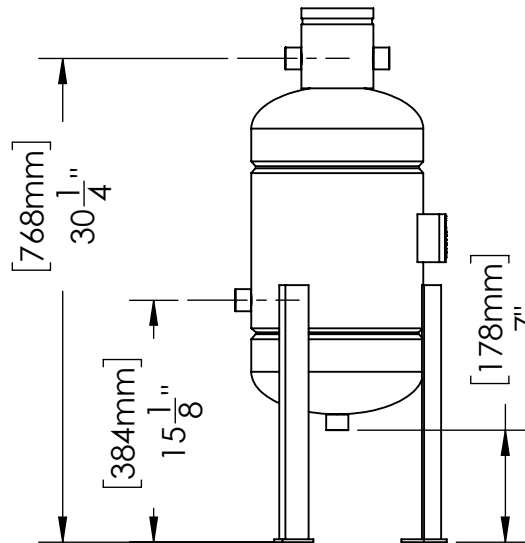
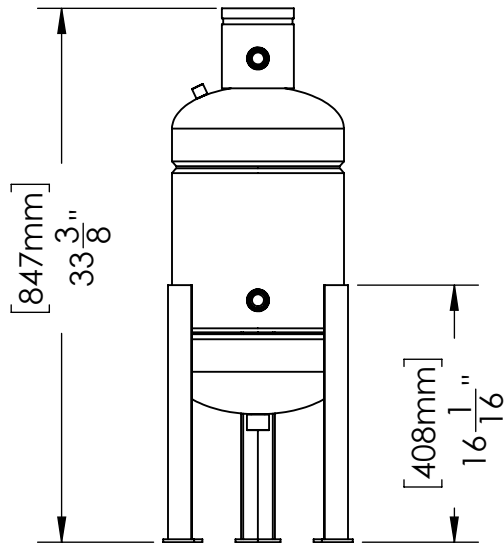
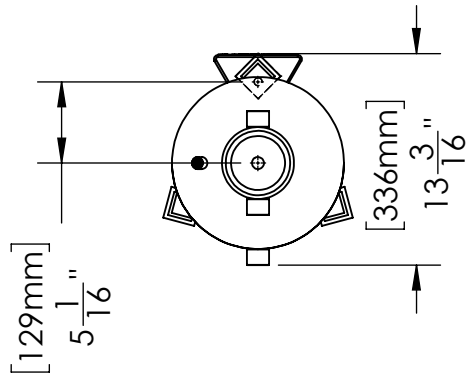


POT  
FEEDER

THIS DRAWING IS FOR SPATIAL CONSIDERATION ONLY, AND SUBJECT TO  
CHANGE W/O PREVIOUS NOTICE, DO NOT PRE-PLUMB TO THESE DIMENSIONS



DB-5-GE-304-A				
Operating Point		Up to 500 Gallon System Volume		
Pot Feeder - Size & Style		Dome Bottom 5 Gallon Safety Bar		
Construction		304 Stainless Steel		
PROCESS INLET				
Connection - Type & Size		NPT 3/4"		
PROCESS OUTLET				
Connection - Type & Size		NPT 3/4"		
PRESSURE - Maximum Operating				
Vessel		600 psi (41.4 bar)		
TEMPERATURE - Maximum Operating				
System		34°F - 250°F (1°C - 121°C)		
WEIGHTS		DRY	SHIPPING	OPERATING
lbs (kg)		100	102	142

PREPARED BY:  
HECTOR J. GUZMAN

REV

A

RELEASED BY:  
TIM BOLEN

DATE:  
3/21/2024



General Water Systems | 1525 East 6th Street | CA | 92879  
www.gwslp.com | info@gwslp.com | 951.278.8992  
\*UNLESS OTHERWISE SPECIFIED -  
ALL DIMENSIONS ARE IN INCHES

DB-5-GE-304-A