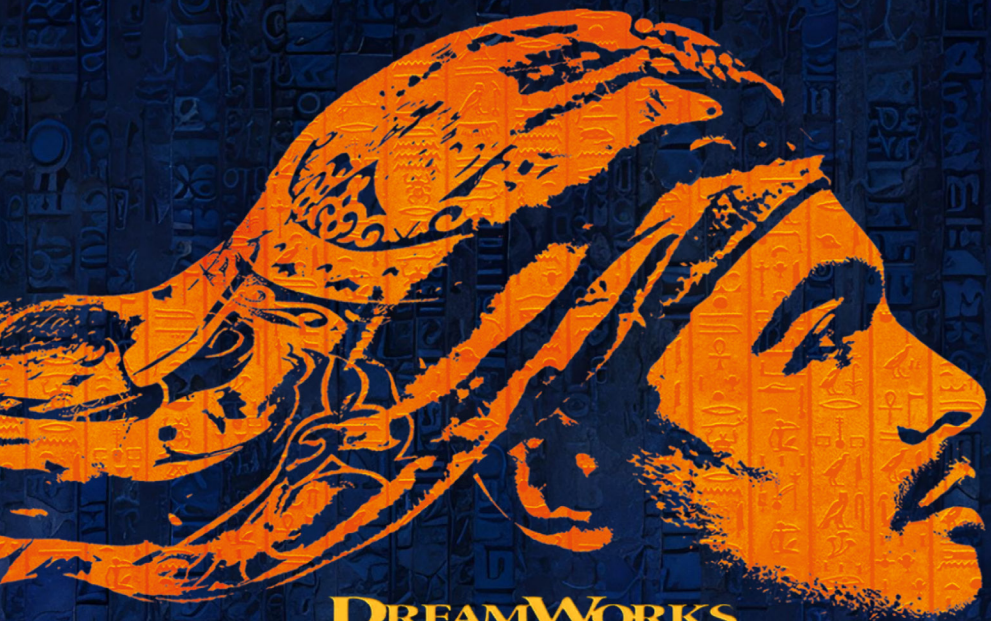




Cache Theatre Company



DREAMWORKS

THE

PRINCE OF EGYPT

A NEW MUSICAL

JULY 11-19 2025



ELLEN ECCLES THEATRE



CACHE THEATRE'S ACADEMY IS BACK!

THIS YEAR'S ACADEMY SHOWS



**2025
-2026
SCHOOL YEAR**

&



**ALADDIN JR.
MON & WED**

**HIGH SCHOOL
MUSICAL
TUES & THURS**

**CLASSES WILL RUN
SEPTEMBER-FEBRUARY,
WITH PERFORMANCES
AT THE UTAH THEATRE**

**PERFORMANCE
DATES TBD**



**FOLLOW US & CHECK OUR WEBSITE FOR
REGISTRATION INFORMATION COMING SOON!**

CACHE THEATRE COMPANY

presents

DREAMWORKS

THE PRINCE OF EGYPT

— THE MUSICAL —

Music and Lyrics by
STEPHEN SCHWARTZ

Book by
PHILIP LAZEBNIK

Based on the 1998 DreamWorks Animation film & the Book of Exodus

THE PRINCE OF EGYPT received its world premiere at TheatreWorks Silicon Valley.
Robert Kelley- Artistic Director, and Phil Santora- Executive Director and Fredericia Teater,
Fredericia, Denmark. Søren Møller- Creative Producer

Original direction by
SCOTT SCHWARTZ

Original score by
HANS ZIMMER

Originally developed in association with

BILL DAMASCHKE & DORI BERINSTEIN

Orchestrations by
AUGUST ERIKSMOEN

Arrangements by
DOMINICK AMENDUM

Directed by
WHITNEY METZ
Music Direction by

DAYSHA
Choreography by
A. RAHEIM WHITE

THE PRINCE OF EGYPT is presented through special arrangement with
Music Theatre International (MTI). All authorized performance materials are
also supplied by MTI. www.mtishows.com

The videotaping or making of electronic or other audio and/or visual recordings of this production
and distributing recordings or streams in any medium, including the internet, is strictly prohibited, a
violation of the author(s)'s rights and actionable under United States Copyright Law.

ANOTE FROM CTC'S BOARD OF TRUSTEES

We want to thank everyone in Cache Valley that has participated in our productions over the last 35 years! As a nonprofit, Cache Theatre Company exists to serve Northern Utah. Every patron, actor, musician, technical worker & volunteer has played a role in continuing CTC's mission to provide opportunity to those who love the arts! Every major decision we make is based on creating opportunity for those who want to create live art on stages throughout Cache Valley. From children, to the most seasoned volunteer, we have a place for you in our community theater! Our valley is unique in the ability to provide such high-quality theater through volunteerism, private donation, and funding through RAPZ tax.

Isn't life a little bit more fun when there's always one more show to see? And isn't it even more fun when that show is being led, directed, and acted by a neighbor? Thank you for making Cache Theatre Company the longest running community theater in Northern Utah. We look forward to watching shows with you as friends and neighbors for many decades to come!

CACHE THEATRE COMPANY BOARD OF TRUSTEES:



*Left to Right: Ryan Leonhardt (Chair), Julie Needham,
David Sidwell, Adam Paul, and Mitzi Mecham*

CACHE THEATRE'S EXECUTIVE BOARD



PRESIDENT
Whitney Metz



VICE-PRESIDENT
Sebrina Woodland



VICE-PRESIDENT
Katherine Newman



SECRETARY
Cyndi Ford



TREASURER
Jill Williams



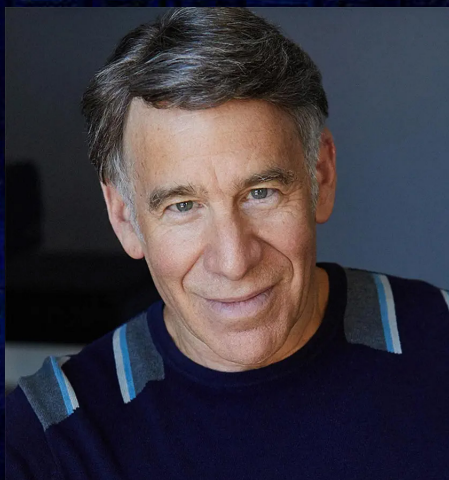
The use of any recording device, either audio or video, and the taking of photographs, either with or without flash, is strictly prohibited during the performance. Please turn off all electronic devices such as cellular phones and watches.



This production contains depictions of slavery, violence (including whip sounds), and intense scenes related to the plagues of Egypt. Some moments may be frightening or emotionally impactful for children or sensitive viewers.

A NOTE FROM THE AUTHORS ON CASTING

From the very beginning of working on *The Prince of Egypt* theatrical musical, we wanted to tell a universal story that spans all racial and ethnic divides, and so we always felt it was important to have a diverse cast whenever possible. In the various productions up to date, we have had a Sri Lankan Moses, a Filipino Tzipporah, a Palestinian Tzipporah, a Black Ramses, a Chinese Keturah, and countless other permutations. The point is that anyone, no matter what their background, can play any role. In many productions, our diverse casts have tripled as Egyptians, Hebrews and Midianites. And in all our productions, we have found that audiences have wholeheartedly embraced and enjoyed this idea of inclusion. That's a central message of *The Prince of Egypt*: in the end, when we strip away the circumstances of our birth and upbringing, we are all the same as members of the human race. We hope you will embrace this universal story and make it your own, bringing the musical and the message to your own community.



Stephen Schwartz



Philip LaZebnik

DIRECTORS NOTE

Welcome to our production of The Prince of Egypt! This story is ancient and timeless. At its heart, The Prince of Egypt is a tale of identity, freedom, courage, and faith. It is a story about finding one's purpose, about the tension between loyalty and justice, and about the power of hope in the face of impossible odds. Though rooted in scripture and history, its themes speak urgently to us today. As we approached this production, we did so with deep



respect for the cultures and communities whose stories inspired it. This musical draws from traditions and histories that are not our own, and we are mindful that we cannot—and should not—attempt to speak for those whose lived experiences are different from ours. What we can do, especially in a community setting, is strive to create space where those voices can be heard, honored, and uplifted. That responsibility is not one we take lightly. Bringing this show to life has been a powerful journey. Our cast and crew (many of whom are stepping onto the stage or behind the curtain for the first time) have poured their hearts into every note, every movement, and every line. Community theater reminds us that storytelling is not about perfection; it's about connection. It's about ordinary people coming together to create something beautiful, something meaningful, and something bigger than ourselves. I am deeply grateful to this community; for its talent, its generosity, and its unwavering support of the arts. Thank you for joining us on this journey through the desert, across the sea, and into a land of promise. May you leave tonight inspired to reflect, to listen, and to believe in the freedom that comes from faith, love, and truth.

With Gratitude, Whitney Metz, Director

PRODUCTION TEAM



Whitney Metz
Director



Daysha
Music Director



A. Raheim White
Choreographer



McKenna Finley
Stage Manager



Kathrine Underwood
*Assistant
Music Director*



Carina Purdy
*Assistant
Choreographer*

Costumer.....	CAROLINE ROBBINS
Assistant Costumer.....	CANDACE LEMON
Wigs.....	BYRON BATISTA
Technical Director.....	DANIEL FRANCIS
Lighting Director.....	KYLE SUNDERLAND
Light Board Operator.....	CANNON HILL
Spot #1.....	CLAIRE FRANCIS
Spot #2.....	KATIE LUNDLOW
Sound Designer.....	MATT BOHMAN
Sound Board Operator.....	MATT BOHMAN
A2.....	BELLA VALDEZ
Set Design.....	DANNY RASH
Set Build.....	LINESET DESIGN
Props Designer.....	BRYNN LARSEN
Assistant Stage Manager	GRAY HARDING
Intimacy Coordinator.....	MCKENNA FINLEY
Fight Choreography.....	MCKENNA FINLEY
Fly Rails.....	JON OLSEN
Stage Hand.....	IVY RICH
Ellen Eccles Technical Director.....	BRIAN JUERENA
Run Crew.....	DERRICK BAILEY, WYATT TAYLOR
Marketing Team.....	BROOKLYN MONSON, RYAN LEONHARDT
Photography.....	PAIGE FARGO, BROOKLYN MONSON
Promo Video.....	PARKER ATKINSON
Program Design.....	BROOKLYN MONSON

THE CAST



Geoffrey
Seamon



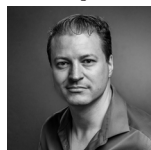
Rylan
Draper



Haven
Draper



Sebrina
Woodland



Michael
Ricks



Daysha



Ricardo
Ramirez



Alexa
Thompson



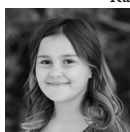
Craig
Winder



Laura
Robbins



Andrew
Crumpley



Cecelia
Metz



Ruel
Perry



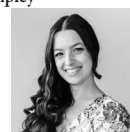
Halle Jo
Jensen



Morgan
Jenkins



Alyssa
Seamons



Analese
Johns Spencer



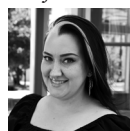
Annabelle
Mathews



Jameson "Jmo"
Campbell



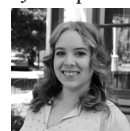
Kinsey
Simpkins



Shelbie
Sanders



Adrean
Gonzalez Vasquez



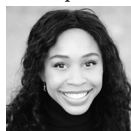
Amber
Freestone



Jennifer
Bohman



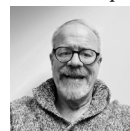
Jennifer
Mathews



Jessica
Christensen



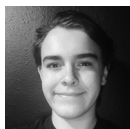
Kim
Day



Randy
Jensen



Marissa
Vargas



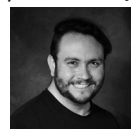
Tristan
Metz



Tori
Turner



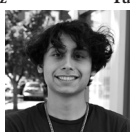
Jordan
Bond



Tanner
Jackman



Leo
Mathews



Marcus
Romero



Pita
Tafisi



Chiara
Merrick



Ryan
Merrick

THE CAST

Moses.....	GEOFFREY SEAMONS
Ramses.....	RYLAN DRAPER
Tzipporah.....	HAVEN DRAPER
Miriam.....	SEBRINA WOODLAND
Aaron.....	ANDREW CRUMPLEY
Hotep.....	CRAIG WINDER
Jethro.....	RICARDO RAMIREZ
Pharaoh Seti.....	MICHAEL RICKS
Queen Tuya.....	DAYSHA
Nefertari.....	LAURA ROBBINS
Yocheved.....	ALEXA THOMPSON
Young Miriam.....	CECELIA METZ
Young Aaron.....	RUEL PERRY
Ketura.....	HALLE JO JENSEN
Leah.....	MORGAN JENKINS

FEATURED DANCERS

Adrean Gonzalez Vasquez, Alyssa Seamons, Amber Freestone,
Analese Johns Spencer, Annabelle Mathews, Andrew Crumpley,
Halle Jo Jensen, Kinsey Simpkins, Shelby Sanders

ENSEMBLE

Adrean Gonzalez Vasquez, Alyssa Seamons, Amber Freestone, Analese
Johns Spencer, Annabelle Mathews, Andrew Crumpley, Cecelia Metz,
Chiara Merrick, Halle Jo Jensen, Jameson Campbell, Jennifer Bohman,
Jenny Mathews, Jessica Christensen, Jordan Bond, Kim Day, Kinsey
Simpkins, Marcus Romero, Marissa Vargas, Morgan Jenkins, Pita Tafisi,
Randy Jensen, Ruel Perry, Ryan Merrick, Shelby Sanders, Tanner
Jackman, Tori Turner, Tristan Metz.

UNDERSTUDIES

Moses/Ramses — ANDREW CRUMPLEY
Nefertari — HALLE JO HANSEN
Yocheved — KATHERINE LINGWALL
Aaron — RYAN MERRICK
Queen Tuya — LAURA ROBBINS
Miriam — KINSEY SIMPKINS
Hotep — PITA TAFISI

MUSICAL NUMBERS

ACT 1

“Deliver Us”.....	Yochaved, Young Miriam, Young Aaron, Queen Tuya, Ensemble
“Faster”.....	Moses, Ramses, Hotep, Ensemble
“One Weak Link”.....	Moses, Ramses, Pharaoh Seti, Queen Tuya, Hotep
“Footprints On The Sand”.....	Moses
“Seti’s Return”.....	Pharaoh Seti, Ramses, Moses, Queen Tuya, Nefertari, Ensemble
“Dance To The Day”.....	Tzipporah
“All I Ever Wanted”.....	Miriam, Moses, Yocheved, Pharaoh Seti, Queen Tuya
“Make It Right”.....	Moses, Ramses
“Moses in the Desert”.....	Moses, Ensemble
“Through Heaven’s Eyes”.....	Jethro, Moses, Tzipporah, Ensemble
“Faster (Reprise)”.....	Ramses, Moses
“Never In A Million Years”.....	Tzipporah, Moses
“Act 1 Finale”.....	Hotep, Pharaoh Seti, Ramses, Nefertari, Queen Tuya, Moses, Tzipporah, Jethro, Ensemble

ACT 2

“Return To Egypt”.....	Tzipporah, Moses, Hotep, Ramses, Ensemble
“Always On Your Side”.....	Moses, Ramses
“Simcha”.....	Moses, Miriam, Tzipporah, Ensemble
“Deliver Us (Reprise)”.....	Aaron, Moses, Ensemble
“The Plagues”.....	Ramses, Moses, Miriam, Hotep, Nefertari, Queen Tuya, Ensemble
“For The Rest Of My Life”.....	Moses
“Heartless”.....	Nefertari, Ramses
“When You Believe”.....	Miriam, Tzipporah, Moses, Ensemble
“Never In A Million Years (Reprise)”.....	Tzipporah, Moses
“Act 2 Finale”.....	Aaron, Moses, Miriam, Yocheved, Hotep, Pharaoh Seti, Ramses, Queen Tuya, Nefertari, Ensemble

*THERE WILL BE ONE 15-MINUTE INTERMISSION.
PERFORMANCE TIME IS APPROXIMATELY 2 HOURS AND 30 MINUTES.*

Benefits of working at Next Meters



Dental/Medical



401(k) match



Firstborn will
not be sacrificed



Generous PTO



Hiring soon in Providence.

WHO'S WHO IN THE COMPANY

ADREAN GONZALEZ

VASQUEZ (Ensemble, Featured Dancer) Adrean is a Musical Theatre student at USU that's dreaming for the skies. He has been in previous productions in the valley like Newsies, Something Rotten, Les Misérables, and more. He is also a personal trainer and loves cooking, baking, and video games on the side.

ALEXA THOMPSON (Yocheved)

Alexa is a performer/vocal coach/music director, but absolutely loves being a mom to her (almost) 6 year old boy the most. Her most recent show was Bright Star at Draper Historic Theatre, where she reprised her dream role of Alice Murphy. She is extremely happy to be visiting Cache Valley from American Fork, and feels very privileged to be a part of an amazing show with a phenomenal cast and crew.

ALYSSA SEAMONS (Ensemble, Featured Dancer) I'm so grateful that I took the chance on this being my first show ever! Prince of Egypt is an all time favorite of mine and once my husband got the lead and they asked for dancers I knew I had to take the opportunity to be a part of it.

AMBER FREESTONE

(Ensemble, Featured Dancer) Amber hopes you enjoy this wonderful

production! She also wants to give huge shout-out to everyone who has helped with her crazy schedule to make it happen!

ANALESE JOHNS SPENCER

(Ensemble, Featured Dancer)

Analese is excited for her cache theater debut! This is her first show in 6 years. She is currently a student at USU planning to work in the wedding industry and hoping to keep performing! She would like to thank her husband for all his support in getting her back on stage!

ANDREW CRUMPLEY (Aaron, Ensemble, Featured Dancer, Moses U/S, Ramses U/S)

Andrew is thrilled to be portraying Aaron in The Prince of Egypt, his first show with CTC, after a 7-year hiatus from the stage! His lifelong passion for music, dance, and performance made musical theatre a natural fit, enabling a dynamic blending of his talents. Outside of the world of music and performance, Andrew enjoys spending time in the mountains with his wife and 3 children.

ANNABELLE MATHEWS

(Ensemble, Featured Dancer)

Annabelle is a senior at Green Canyon High School. She enjoys tanning, dancing, spending time with friends, drinking large amounts

WHO'S WHO IN THE COMPANY

of Dr. Pepper, and musicals! She has also appeared in CTC's School of Rock, Newsies, Shrek the Musical, and Music Theatre West's Mean Girls!

CECELIA METZ (Young Miriam, Ensemble) Cecelia has been performing since she was 4 years old. This is her third time on the Eccles stage. Her favorites include School of Rock, SpongeBob Youth edition, Newsies Jr and Little Mermaid Jr. She is so excited to be in The Prince of Egypt!

CHIARA MERRICK (Ensemble) Chiara Merrick is a lifelong music lover and honored to join The Prince of Egypt ensemble. A longtime choir member, this marks her first community theater production and a meaningful step in owning her voice. Offstage, she enjoys serenading her cats, foraging in the mountains, and dancing under the moon.

CRAIG WINDER (Hotep) It's been a minute. Glad to be back on the stage! Much love to my partner in crime Sabina, and the five beautiful children who both age us and keep us young. Mostly age us.

DAYSHA (Queen Tuya, Music Director) "Music is a part of your life" are words to live by. They were the words uttered every day at the

end of band class and they inspired a 13-year-old girl growing up in a single-parent home in Daytona Beach, Florida. Three decades and many life experiences later, those words are still true. A transplant to Utah, Daysha made Utah County her home in 2012 to study classical voice at The University of Utah. Her breakout role in musical theater was "Nell" in Fats Waller's Ain't Misbehavin' (WVC Arts, 2020). She's since covered ground in a myriad of genres. From Menken's Beauty & the Beast to Little Shop of Horrors, Daysha aims to be versatile and unlimited. Her goal is to meet people where they are through intersectionality and Southern charm. Her newest role is "Mommy" to her only child, who frequents the theater and seems to follow in Mom's footsteps. CTC's Prince of Egypt is her debut in the capacity of a Music Director.

GEOFFREY SEAMONS (Moses) The Prince of Egypt has been a cherished part of Geoffrey's life since childhood, so stepping into the role of Moses has truly been a dream come true. When he auditioned, he never imagined he'd be trusted with such a powerful role, especially surrounded by such an incredibly talented and seasoned cast. This



FOUR SEASONS THEATRE COMPANY PRESENTS

BLITHE Spirit

Use code:
COMMUNITY
for 10% off



August 1-9

sky view Auditorium

get your tickets @ fourseasonstheatre.org



MUSIC THEATRE WEST

THE ADDAMS FAMILY

OCT 10-18

**ELLEN ECCLES
THEATRE**

MUSICTHEATREWEST.ORG

WHO'S WHO IN THE COMPANY

experience has stretched him in every way—physically, vocally, emotionally, spiritually—and he's grown more than he thought possible. One of the greatest joys of this journey has been sharing the stage with his amazing wife in her very first show, making this experience even more meaningful and unforgettable. He's deeply grateful for the love, encouragement, and support he's received from his fellow cast members, the incredible crew, and everyone who believed in him. Fresh off playing Sky in Four Season's Mamma Mia, Geoffrey feels profoundly honored to help bring this story of faith, courage, and deliverance to life. This journey has been a sacred one, and he'll treasure it always.

HALLE JO JENSEN (Keturah, Ensemble, Featured Dancer, Nefertari U/S) Halle is so excited to be part of The Prince of Egypt! Being in a story rooted in faith, courage, and freedom has been an incredible experience. She's so grateful to God, her family, and friends for all their love and support—enjoy the show!

HAVEN DRAPER (Tzipporah) Haven grew up watching The Prince of Egypt. She is so excited to be telling this story on stage as

Tzipporah, especially with one of her brothers! She loves sunsets, is always down for an adventure, and will love you forever if you give her cheezitz. Haven plans on serving an LDS mission and then going to college to pursue her love for theatre! "When you believe", anything is possible! Enjoy the show:)

JAMESON "JMO" CAMPBELL (Ensemble) Jameson is from Providence, UT and is thrilled to be part of this production. He has previously appeared as Mufasa in Lion King Jr, and Weisel in Newsies Jr.

JENNIFER BOHMAN (Ensemble) Jennifer has taught voice and music directed for many decades in the valley. She is grateful for the opportunity to perform with these talented and good hearted humans. "Life is already so dark, if you've got the talent to make it brighter, give people joy and hope, why would you withhold that?" -An American in Paris.

JENNAFER MATHEWS (Ensemble) Inspired by her kids and their love of theater, Jenny started auditioning for shows again two years ago after a 22 year hiatus! She has recently done Seussical, A Christmas Story, Joseph and the Amazing Technicolor Dreamcoat, and Mamma Mia!

WHO'S WHO IN THE COMPANY

JESSICA CHRISTENSEN

(Ensemble) Jessica is excited to be on stage for an amazing Cache Theatre Production. This show has been such a wonderful experience full of the most talented people. It has been amazing to dive into the incredible music and themes of this show. A few of her previous shows have been Into the Woods, Joseph and the Amazing Technicolor DreamCoat, and Mamma Mia.

JORDAN BOND (Ensemble) I'm a 24-year-old Biochemistry major and pre-dental student at Utah State University, originally from Nibley, Utah. My wife and I are expecting our first child in December, so life is full of excitement right now! After years immersed in science and academics, jumping back into theater has been a thrilling and refreshing change of pace.

KATHRINE UNDERWOOD (Yocheved U/S, Assistant Music Director) Kathrine Underwood is a vocalist, musician, composer, songwriter, and educator based in Vineyard, Utah, with a Bachelor of Music in Commercial Music specializing in Contemporary Vocal Performance from Utah Valley University. Her work spans from performance, vocal arranging, symphonic composition, studio

production, and music direction. Kathrine Underwood is a vocalist, songwriter, composer, and educator; she has been featured as a lead, background vocalist, and keyboardist in UVU's Sonic Exchange. Her original works and arrangements have been showcased at events like Sema Hadithi's Ancestral Remembrance Celebration and the Utah Extravaganza: Dancing with the Stars Champions concert. Her portfolio includes vocal arranging, symphonic composition, studio production, and music direction. As a private music instructor of 7 years, Kathrine has worked with students of all ages in voice, piano, songwriting, composition, and music production. Her lessons are built around student goals, creative collaboration, and the belief that what each person brings to music truly matters.

KIM DAY (Ensemble) Kim has spent the last ten years delighting Cache Valley audiences in a myriad of roles, but a true "burning bush" moment called her to be a part of Prince of Egypt. As a teacher who's absolutely ecstatic to be on summer break (and thus, blessedly free from grading papers), she's also known as "The Nice One" in her family and enjoys exercising for fun—though

WHO'S WHO IN THE COMPANY

her true passion remains all things peanut butter chocolate. She's thrilled you're here!

KINSEY SIMPKINS (Ensemble, Featured Dancer, Miriam U/S) After several years away from performing, Kinsey is grateful to be returning to the stage. In that time, she focused on healing from a back injury and worked as a wardrobe supervisor and costume crafts artisan with Pioneer Theatre Company and the Utah Shakespeare Festival. This fall, she'll begin studying Musical Theatre with a minor in Dance at Weber State.

LAURA ROBBINS (Nefertari, Queen Tuya U/S) Laura Robbins is so happy and honored to be a part of the Prince Of Egypt cast. One of her very first shows was Ragtime in this theater. She has been in Aida, Ragtime, 1940s Radio Hour and now Prince Of Egypt. Though she is new to acting she is not new to the stage she has sung all over the United States. She has sung for the Governor, the NAACP, broadcasted worldwide concerts and more. She is happy you came to see the show and hopes you enjoy it!

MARCUS ROMERO (Ensemble) Marcus is a 3rd year in the Actor Training Program at the University of Utah. He is super excited to be

in this show and work with these amazing people.

MARISSA VARGAS (Ensemble) I am thrilled to be back on stage with a theatrical production of one of my favorite childhood movies. I hope through this experience to teach my 2 kids to look at their lives through heaven's eyes and also that there can be miracles when you believe!

MICHAEL RICKS (Pharaoh Seti) This will be Michael's first production with Cache Theatre Company. Michael has had the pleasure of performing for years in theatre productions, and in Utah Opera '09 and '10 seasons. His favorite roles include Gomez Addams in The Addams Family, Lumiere in Beauty & The Beast, Edward Rutledge in 1776, Harry in Company, and Vlad Popov in Anastasia. Michael would like to thank his loving wife Kathy and children for all of their continued support.

MORGAN JENKINS (Leah, Ensemble) Morgan is ecstatic to be back on the Eccles stage with this beautiful story! She hopes y'all enjoy the show! Remember to "look at your life Through Heaven's Eyes!"

PITA TAFISI (Ensemble, Hotep U/S) This is Pita's first show and he

WHO'S WHO IN THE COMPANY

is enjoying every second! Though he is not new to the stage, he has participated in *The Chosen*, multiple concerts, luaus, and music videos. Pita hopes y'all come and enjoy the musical he has fallen in love with.

RICARDO RAMIREZ (Jethro) Ricardo is very excited to make his debut performance with Cache Theater Company. Other roles include *Motel* (*Fiddler on The Roof*) John Watson (*Sherlock: The Musical*) Pablo (*Sister Act : The Musical*) and among many others. He would like to thank the entire production team for entrusting him to bring Jethro to life.

RUEL PERRY (Young Aaron, Ensemble) At the young age of 9 years old, Ruel is excited to be performing on the Ellen Eccles stage for the second time. His experiences with both junior and adult casts include roles in *Matilda Jr.* (Nigel), *Beauty and the Beast Jr.* (Chip), *Newsies Jr.* (Les), and the adult CTC production of *Shrek* (Young Shrek and Grumpy the Dwarf). He has come to love his time performing on the stage and sharing his talent and personality with his audiences.

RYLAN DRAPER (Ramses) Rylan has loved musical theatre since he started performing as a

teenager and is so excited to be back after 8 years of not performing! He dedicates every performance to his family, especially his wife and 2 beautiful daughters Isabella and Cassidy.

RYAN MERRICK (Ensemble, Aaron U/S) Ryan Merrick is thrilled to return to the stage as part of the ensemble in *The Prince of Egypt*. Past credits include *The Scarlet Pimpernel*, *Beauty and the Beast*, and *Children of Eden*, along with extensive choir, band, and ballroom dance experience throughout his school years. He is passionate about exploring culture, language, and human connection through the performing arts.

SEBRINA WOODLAND (Miriam) Sebrina is honored to play Miriam, a role that has deeply inspired her with its message of faith and hope. Favorite past roles include Donna (*Mamma Mia!*), Ms. Mullins (*School of Rock*), and Anna (*The King and I*). She thanks her five wonderful children for their endless love and support—they remind her what's possible “when you believe.”

SHELBIE SANDERS (Ensemble, Featured Dancer) Shelbie is so glad she went out on a limb and auditioned for this fantastic show

WHO'S WHO IN THE COMPANY

after 15 years in retirement. She would like to thank her family, especially her husband and dog. When she is not on stage, you can find her with a crisp cold Dr. Pepper putting pedal to the medal on her sewing machine.

TANNER JACKMAN (Ensemble) Tanner is thrilled to be on the stage again performing with this talented cast! Tanner was previously seen in School of Rock with CTC!

TORI TURNER (Ensemble) Tori is honored to be performing this stunning music and choreography, and she can't wait to share the highs, the lows, and the utter beauty of this show with you. This fall she will graduate from Utah State University with a degree in music, and hopes to spend the next few years doing more theatre, travelling, and breathing life into her dream of being a public speaker/singer who elevates her storytelling with original songs.

TRISTAN METZ (Ensemble) I've worked in theatre since I was little. I've done over 20 shows here in Cache Valley.

WHITNEY METZ (Director) Whitney has served as the president of CTC for the past four years. An experienced director, she has brought many productions to life,

with favorites including School of Rock and Matilda. For the past eight years, she has led CTC's wildly popular summer theater camp which has grown to serve over 600 children each year. Her passion for nurturing young performers also inspired the creation of a year round theater academy. Whitney is a proud mom to five incredible kids and has been married to her best friend, Chris, for 16 years. Theater is what brought them together, and it continues to be a big part of their family's life. She also has to thank her incredible board, trustees, crew, parents, and peaches for all their support.

DAYSHA (Music Director, Queen Tuya) "Music is a part of your life" are words to live by. They were the words uttered every day at the end of band class and they inspired a 13-year-old girl growing up in a single-parent home in Daytona Beach, Florida. Three decades and many life experiences later, those words are still true. A transplant to Utah, Daysha made Utah County her home in 2012 to study classical voice at The University of Utah. Her breakout role in musical theater was "Nell" in Fats Waller's Ain't Misbehavin' (WVC Arts, 2020). She's since covered ground in a myriad of genres. From Menken's

WHO'S WHO IN THE COMPANY

Beauty & the Beast to Little Shop of Horrors, Daysha aims to be versatile and unlimited. Her goal is to meet people where they are through intersectionality and Southern charm. Her newest role is “Mommy” to her only child, who frequents the theater and seems to follow in Mom’s footsteps. CTC’s Prince of Egypt is her debut in the capacity of a Music Director.

A. RAHEIM WHITE

(Choreographer) A. Raheim White stands at the forefront of wellness and mindfulness, seamlessly integrating their expertise as a specialist, keynote speaker, dancer/choreographer, and author.

Raheim’s academic journey includes earning their MFA from New York University Tisch School of the Arts, BFA from the University of Illinois at Urbana Champaign, both in Dance with performance and choreography focuses, along with a formative semester at the Taipei National University of the Arts. They are the Head of Movement in the Department of Theater at the University of Utah.

MCKENNA FINLEY (Stage Manager, Fight Choreographer, Intimacy Coordinator) McKenna has been with Cache Theatre Company for a year, working mostly as a

Stage Manager and Director for the Panoramic Academy. She also works with the Antics Comedy Improv, as well as working as an actor, facilitator, dramaturg, intimacy choreographer, fight choreographer, and stage manager for the last few years. (Also, for Prince of Egypt, she is the SM, fight choreographer, and intimacy director.) She’s been working in theatre for five years, doing professional improv for three years, and working as an Independent Teaching Artist for two years. Theatre is her passion, to be able help people connect and experience through theatre and improv is her motivation. She has experience in nearly every aspect of theatre, and always is willing to learn more. She worked with Utah Festival Opera and Musical Theatre as a stage manager, the conservatory youth manager, etc. She also is the Head of Operations for The Antics Improv Comedy troupe.

KATHRINE UNDERWOOD

(Assistant Music Director/ Yocheved U/S) Kathrine Underwood is a vocalist, musician, composer, songwriter, and educator based in Vineyard with a Bachelor of Music in Commercial Music specializing in Contemporary Vocal Performance from Utah Valley University. Her

WHO'S WHO IN THE COMPANY

work spans from performance, vocal arranging, symphonic composition, studio production, and music direction. She has been featured as a lead, background vocalist, and keyboardist in UVU's Sonic Exchange. Her original works and arrangements have been showcased at events like Sema Hadithi's Ancestral Remembrance Celebration and the Utah Extravaganza: Dancing with the Stars Champions concert. As a private music instructor of 7 years, Kathrine has worked with students of all ages in voice, piano, songwriting, composition, and music production. Her lessons are built around student goals, creative collaboration, and the belief that what each person brings to music truly matters.

CARINA PURDY (Assistant Choreographer) Carina Purdy is a student at the University of Utah and is majoring in musical theatre. She is so happy to be working here at Cache Theatre alongside Raheim White. Huge thank you to Raheim for being her side kick and creating with her. Insta: @carinap.03

BELLA VALDEZ (A2)

BRIAN JUERENA (Ellen Eccles Technical Director)

BROOKLYN MONSON (Marketing Team, Social Media, Program Designer) Brooklyn is a Cache Valley local who recently graduated from Southern Utah University with a degree in Communications, emphasizing in social media marketing. A lifelong theatre lover, Brooklyn grew up dancing competitively and was heavily involved in Ridgeline High School Theatre. She has also trained with the Utah Festival Opera & Musical Theatre Conservatory, Pickleville Playhouse Workshops, and participated in RHS's chamber and concert choirs. At SUU, she directed the original production The False Prince back in 2023 and worked as a social media manager for SUU's Student Association. Now working professionally as a social media manager, graphic designer, photographer, videographer, and artist, Brooklyn is passionate about creating visually compelling content that tells stories. Whether crafting dynamic marketing campaigns or designing eye-catching visuals, she loves bringing bold visions to life! Go follow @cachetheatre for more! Carpe Diem! @brooklyn_monson_

BRYNN LARSEN (Props Designer) Brynn has had a delightful time working on her first show

WHO'S WHO IN THE COMPANY

with Cache Theatre Company. She has been involved in shows since childhood, but has specialized in props because its the most fun. Designing for The Prince of Egypt has been a joy thanks to an amazing team, and she's loved the chance to help tell this story.

BYRON BATISTA (Wigs) Byron comes to Utah, by the way of Los Angeles, where he spent most of his career. He was also the Makeup Artist for Val Kilmer's one man show Citizen Twain, where Byron applied Mr. Kilmer's prosthetic make up, which he can be seen doing a test run in his autobiographical film, Val.

CADENCE LEMON (Assistant Costume Designer) Cadence recently graduated from Bridgerland Technical College in Fashion Merchandising and Development. This is the first show she has worked on and she is hoping to work on more in the future. She plans to attend Weber State in the fall.

CANNON HILL (Light Board Operator)

CAROLINE ROBBINS (Costumer) Instructor at Bridgerland Technical College in the Fashion Merchandising and Development program. Previous credits at CTC include: Spamalot, Jekyll and Hyde, Once on This

Island, and The Little Mermaid. Grateful that my mom taught me how to sew. Dedicated to Austin and my boys.

CLAIRE FRANCIS (Spot #1)

CHRIS METZ (Acting Coach, Assistant Director) Chris Metz is a seasoned director, writer, and award-nominated performer with over 20 years of theatrical experience. Chris brings a dynamic blend of creative vision and performance insight to the production. As a performer, Chris's most recent role was the beloved ogre Shrek in Shrek: The Musical, a performance praised for its heart and humor. Other notable roles include Dewey Finn (School of Rock), William Shakespeare (Something Rotten), Mr. Wormwood (Matilda), and Galahad (Spamalot). Chris is committed to creating theatre that inspires, challenges, and connects!

DANIEL FRANCIS (Technical Director) In his youth, Prince of Egypt was one of Daniel's favorite comfort movies. As such, it's his dream come true to not only Technical Direct but also to build the set with Line Set Design. You'll be able to see Daniel's upcoming work at USU as he pursues a career in technical theatre.

WHO'S WHO IN THE COMPANY

DERRICK BAILEY (Run Crew)

GRAY HARDING (Assistant Stage Manager) Gray is a theatre enthusiast who just graduated USU with a bachelor's degree in the arts. They've participated in many shows, both onstage and backstage, and they enjoy learning new things about technical theatre.

IVY RICH (Stage Hand)

JON OLSEN (Fly Rails)

KATIE LUNDLOW (Spot #2)

Katie is a theatre and acting teacher based in Logan, Utah, where she is studying Theatre Education with a minor in English at Utah State University. This summer, Katie is teaching with the Lyric Repertory Company and leading a USU research project focused on offering theatre classes at the Cache County Senior Center. Some of her recent credits include Props Master for *The Foreigner* (Valley Actors Club), Assistant Stage Manager for *Or*, (Utah State University), and Assistant Director for *Between the Lines* (Utah State University).

KYLE SUNDERLAND (Lighting Designer) Kyle is a local lighting designer working in theatrical design for the last four years. Some recent favorites he has designed have been *Catch Me If You Can* with MTW, *School of Rock* with CTC, and

recently Jane Austen's "Emma" with MTW. In addition to designing for community theatre, he is an electrician and lighting designer at the Ellen Eccles Theatre working on touring shows and rentals there. In his free time, he enjoys puzzling, music, the Andy Griffith and the Muppet Show, cooking, and gardening!

MATT BOHMAN (Sound Designer, Board Operator) Matt has been busy this summer, helping in various aspects of shows around the valley. He has found a knack for creating things that people don't necessarily see, but instead, hear!

PAIGE FARGO (Photography)

PARKER ATKINSON (Promo Videography)

WYATT TAYLOR (Run Crew)

DID YOU KNOW?

- "*When You Believe*," sung by Whitney Houston and Mariah Carey for the film, won the Academy Award for Best Original Song in 1999.

- Stephen Schwartz also wrote music for "*Wicked*," "*Pippin*," and "*Godspell*."

- *The West End production was filmed live and is now available to stream online.*

STAY CONNECTED!

**FOLLOW US ON SOCIAL MEDIA FOR
NEWS ABOUT UPCOMING SHOWS,
BTS CONTENT, AND MORE!**



Cache Theatre Company

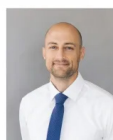


**Weddings, parties, and more!
Celebrate in style at Lionheart Hall.
Book with us today!**



SPECIAL THANKS

THANK YOU TO OUR SPONSORS



& THANKS TO EVERYONE WHO MADE THIS POSSIBLE

A&D
Abby Peterson
Adam Paul
Amma Christensen
Annakarenina Reyes
Austin Robbins
Brian Jurena
Cache Arts
Caroline Robbins
Cory's Dry Ice
Daniel Francis
Ellen Eccles Theatre
Four Seasons Theatre
Hansen Sisters
Foundation
Jarikka Paskett

Jared Rounds
Jess Wallace
Jessi Thomson
Julie & Stanton Allen
Kathryn Kehoe
Kody & Kim Rash
Logan Downtown
Marian Harmon
McKenna Langford
Music Theatre International
Music Theatre West
My Mattress
Nancy Kennedy
NEXT Meters
Utah Festival Opera &
Musical Theatre



SHARE YOUR EXPERIENCE

**DID YOU SNAP A SELFIE, PLAYBILL PHOTO, OR
DRAMATIC CURTAIN CALL MOMENT? WE WANNA SEE IT!**

**TAG @CACHETHEATRE TO SHARE THE MAGIC...
YOU MIGHT JUST GET FEATURED!**