

Spring 2013

BUCK & DOE



TRUST

*Supporting Land and Water Resource Conservation...*

*Inaugural Event: May 4th*

*“The Laurels & The Hardy”*

Recognizing the need to support our flagship the Brandywine Conservancy, the BDT is organizing a clean-up group to assist the Brandywine Conservancy staff in the Laurels Preserve. Our kick-off event, named **The Laurels and The Hardy**, will be **Saturday, May 4th at 9am**. The morning will begin with a talk about invasive plants and best management strategies when dealing with these invasives. We will then assist the BC staff in removing invasive plants, replacing damaged stakes, and removing vines from trees.

We encourage all in our membership, friends and landowners to come out to support the effort. It is especially important to assist our neighbor the Brandywine Conservancy and to “give back” particularly if you have ever done the following:

- Walked in the Laurels
- Ridden or Driven in the Laurels
- Fox Hunted in the Laurels
- Enjoyed the Spring Fling

Special coffee and home-made breakfast breads will be served. Bring pruning shears and gloves.

Please rsvp or for questions:  
[susannah.small@comcast.net](mailto:susannah.small@comcast.net)

**Mark your Calendars!**

**Saturday, May 4th!!!!**

**Rain date: Saturday May 11th**



*Support*

**The Laurels Bridges**

The Brandywine Conservancy (BC) has played a significant role in so much we enjoy in this area on so many levels. They were an integral, vital part in the King Ranch preservation project which provided the nucleus of 5400 acres under preservation which now extends to over 26,000+ contiguous preserved acres. We all enjoy this quality of life such as foxhunting, hiking, pleasure riding, birding because of the BC's continued efforts.

In addition to the important work the Brandywine Conservancy does to protect the natural resources of our area they also maintain a number of important historic structures. Two of those structures are the covered bridges known as the “Twin Bridges” in the Laurels Preserve.

The Hayes Clark Bridge was originally built by James B. Pyle in 1884. The original bridge was destroyed by fire in 1963 and reconstructed in 1971 by the Buck and Doe Run Valley Farms. They used the Queenpost design in their construction. The bridge is 75 feet long and 16 feet wide and crosses Doe Run. The second bridge is the Speakman No. 2 / Mary Ann Pyle Bridge. It was built in 1881 by Menandere and Ferdinand Wood also utilizing the Queenpost design. The structure is 75 feet long and 15 feet wide, it crosses Buck Run.

Due to the ravages of time both bridges are in danger of failure. The Brandywine Conservancy has identified the restoration of these important structures as a priority. The Buck and Doe Trust is taking a leadership role to assist the Conservancy in raising the funds necessary to accomplish their full restoration. \$400,000

(Cont'd page 3)



# President's Letter

It continues to be a busy time for the BDT and the "neighborhood"!

We are pleased to report, the Brandywine Conservancy (BC) and the Laurels Land Management Committee, at the request of many, have expanded the Laurels Preserve hours to dawn to dusk (previously the hours were 9am-5pm). The response has been overwhelming! Please remember one must be a BC member to be in the Laurels Preserve as it is a private preserve and not open to the public. We want to thank the BC for working together with the community on this effort!

The BDT efforts continue this year with the following specific goals:

- 1) Assist the BC in the Laurels Bridge campaign
- 2) Coordinate and host the inaugural event **"The Laurels and The Hardy"**, a clean-up morning on May 4th to assist BC with invasives and other projects in the Laurels Preserve (see cover article)
- 3) Develop conservation awareness/education events for landowners and other interested parties including children's groups
- 4) Support and develop actions to encourage easements for small and large landowners
- 5) Encourage individuals and all groups to work together for the common goal of preservation

We continue to be fiercely dedicated to those individuals and groups who have contributed so much to the extraordinary preservation effort which we all enjoy today. We have dedicated this newsletter to the specific 3 land trusts in our area, each who are Nationally Accredited Land Trusts. Along with our flagship, the Brandywine Conservancy, there are the National Lands Trust (NLT) and The Land Conservancy of Southern Chester County (ILC of SCC).

We are very fortunate to have such amazing preservation groups! Highlighted in this newsletter are their history, mission, conservation impact and a few of their projects.

For example, the BC for the Brandywine Creek Greenway project (see page 5) and the Laurels Bridge repairs (see cover article). Specifically the funds will go towards the actual bridge repairs, but it is also symbolic to support the BC who has played and continues to play a very significant/key role in preserving our area!

It should also be noted NLT is opening, on June 16th, the Lenfest Center at Cheslen Preserve, a public preserve. Additionally, please note TLC of SCC, whose offices are in Willowdale, have many related projects as well.

I encourage everyone to not only check out these organizations through websites, etc, but to also get involved!

Have a great spring, and hope to see you at these events!

*Amy McKenna*  
AmyMcKenna123@aol.com

# Community News

## Births

- Jamie (Bartholomew) and Steven Aller, Baby girl Lydia

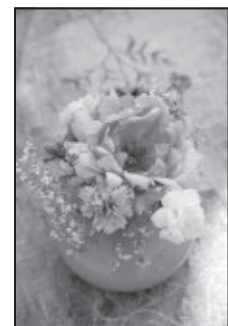


*We strive to include everyone in the community in this section.*

*Please let us know if we have missed anything.*

## Passings

- Ramsey Buchanan
- Denise Rotko
- Abbie Wylie
- Nancy Reynolds
- Bill Sellers
- Jack Singer
- Richard Quillman
- Bill Dreisbach





## Support the Bridges cont'd

is required to properly complete the project. A matching grant of \$200,000 has been committed, the early efforts of the Buck and Doe Trust have to date generated leadership donations through the 100% participation of the BDT Board and generous members of our community totaling \$50,000. Our goal is to raise the remaining \$150,000 so that the restoration may get underway as soon as possible.

This effort is about a great deal more than the restoration of these important structures, it is an opportunity for our community to recognize the tremendous contribution the Brandywine Conservancy has made to protect open space and the quality of life in our community. Please help us to meet our goal, your contribution is essential to success. Please contact Jamie O'Rourke for additional information. 484-832-4365 [JORUville@aol.com](mailto:JORUville@aol.com)

***Contributions are deductible to the full extent allowed by law; checks may be made payable to the Brandywine Conservancy/Laurels Bridges and send to the Buck and Doe Trust, PO Box 804, Unionville, Pa 19375***



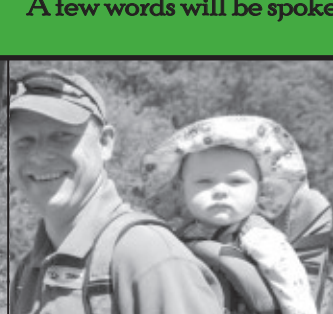
***Mary Ann Pyle Bridge***, built in 1881, listed on the National Historic Register



***Hayes Clark Bridge***, burnt in 1963 and was replaced by Buck & Doe Run Valley Farms



**Spring Fling  
Sunday, May 19th  
10am-Noon**  
A few words will be spoken around 11am.





## Brandywine Conservancy Environmental Management Center

### History of the Brandywine Conservancy:

In the mid-1960s, Chadds Ford, Pennsylvania in the historic Brandywine Valley, faced possible massive industrial development. The impact would have dramatically changed the character and future of a community that was then largely rural. At the same time, and for decades thereafter, development proposed throughout the region, particularly in floodplain areas, threatened to devastate water supplies for numerous communities in southeastern Pennsylvania and northern Delaware, including the City of Wilmington.

Appreciating the need for rapid action, a group of local residents bought endangered land and founded the Brandywine Conservancy in 1967. The first conservation easements, protecting more than 5 miles along the Brandywine, were granted in 1969. Today, the Conservancy has facilitated in the preservation of over 57,000 acres of critical resources. The Conservancy was one of the founding organizations of the national Land Trust Alliance and, in 2008, became one of the first organizations in the country to seek national accreditation as a land trust.

In 1971, the Conservancy opened the Brandywine River Museum in a former gristmill built in 1864 that was part of the Conservancy's first preservation efforts. With nearly six million visitors to date, the museum has established an international reputation for its unparalleled collection and its dedication to American art with primary emphasis on the art of the Brandywine region, American illustration, still life and landscape painting, and the work of the Wyeth family.

### Mission:

The Brandywine Conservancy is committed to the belief that preservation and wise use of natural and cultural

resources provides health, education, beauty, and increased quality of life for individuals and communities. The Conservancy assures present and future generations of open space, dependable water supplies, historical sites, and important works of American Art, and also provides an understanding of the meaning and potential of these things, both separately and in relation to each other. The Conservancy preserves, protects, interprets, utilizes and displays these resources through its Brandywine River Museum and Environmental Management Center (EMC).

The Conservancy's Environmental Management Center (EMC) is a leading local and national advocate for responsible land use, open space preservation and water protection. The EMC focuses on integrating conservation with economic development through its Land Stewardship and Municipal Assistance programs. Since 1967, its professional staff has provided conservation services to landowners, farmers, municipalities, and developers. Extensive planning and zoning assistance is also regularly provided to all levels of government.

### Number of acres under conservation:

The Brandywine Conservancy's portfolio of protected land totaled 37,619 acres consisting of 445 façade, trail, and conservation easements protecting 35,283 acres and 2,336 acres owned. The easements we hold involve more than 1,200 tax parcels owned by nearly 700 landowners. Thanks to the generosity of many individuals, over 94% of Conservancy-held easements have been donated by the landowners. In Pennsylvania, the Conservancy's easement holdings represent more than 17% of the total acres of land under conservation easement. As the leading non-profit organization protecting farmland in Chester County, the Conservancy has preserved 71% of the protected farms in the county.

### Upcoming projects in the next year:

The Conservancy has and is participating in numerous initiatives. At the national level, we have joined with the Land Trust Alliance to advocate for the permanent extension of tax incentives for donated easements. At the state level, we successfully opposed Pennsylvania legislation that would have terminated dedicated funding for farmland preservation and parks. We also currently serve on a regional Planning Collaborative resulting in the inclusion of protected lands and sensitive resources to be avoided during the planning of energy generation,



transmission, and gas pipelines.

The Brandywine Conservancy works hand-in-hand to further protect water quality. Efforts include reforestation, restoring stream banks, and helping farmers and other landowners implement Best Management Practices, such as stream bank fencing and storm water controls. The EMC is participating in a reforestation initiative as part of a regional campaign coordinated by the Pennsylvania Horticultural Society to plant 1,000,000 trees. The Brandywine Conservancy established a five-year reforestation campaign to plant 25,000 trees in the Brandywine/Christina watershed that spans Pennsylvania and Delaware by the end of 2014. With over 17,000 trees planted to date, we are exceeding our goal! In 2013, we have six tree plantings scheduled.

The Conservancy is also spear-heading the Brandywine Creek Greenway, envisioned as a 30 mile long green corridor of varying width, stretching from the Delaware state line at Chadds Ford to the state-designated Pennsylvania Highlands Mega-Greenway in the north. It will include an interconnected system of trails, informal paths, parks, river access points, and riparian buffers and will link the Brandywine Creek with many communities along its path. The Conservancy is working with 24 municipalities and stakeholders on this initiative.

Join us for our annual Wildflower, Native Plant & Seed Sale on Saturday, May 11 and Sunday, May 12 from 9:30 a.m. to 4:30 p.m. in the Brandywine River Museum Courtyard. Admission is free and the event is sponsored by the Brandywine Conservancy Garden Volunteers.

Interested in learning about the resources of the Brandywine Conservancy's preserves and helping to provide essential stewardship support? Please join our new volunteer program, which launches this spring. There are two exciting opportunities for volunteers. We are recruiting and training volunteers to join our Trail Stewards Program to become

"ambassadors" at the Laurels. Trail Stewards will participate in multi-session training in which they will learn about the history and ecology of the Laurels Preserve, discover the principles of "Leave No Trace" outdoor ethics and how to share this information with visitors, and provide essential support to staff in the stewardship of the Laurels.

We also need volunteers to assist with a variety of hands-on projects. Training and tools will be provided by Conservancy staff; volunteers only need enthusiasm and a love of the outdoors. If interested in getting involved this spring, please contact Susan McCreadie at [smccreadie@brandywine.org](mailto:smccreadie@brandywine.org) or 610-388-8377.

**Website Info:**

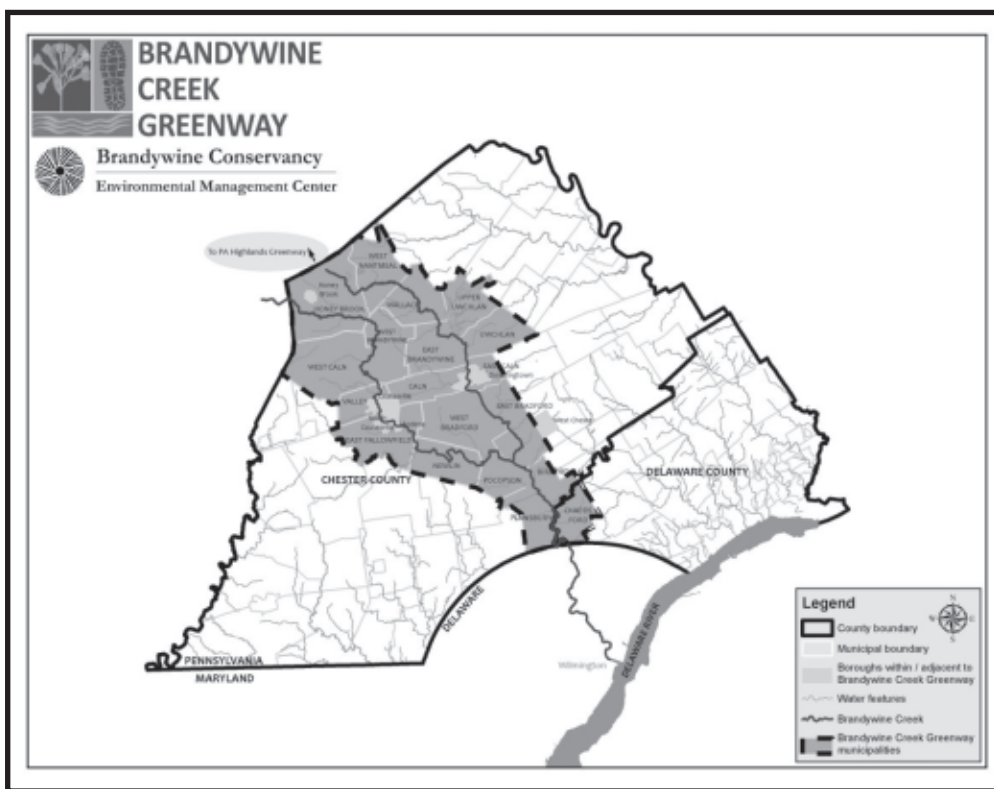
[www.brandywineconservancy.org](http://www.brandywineconservancy.org)

<http://stewardshipchronicles.blogspot.com>

[www.facebook.com/BrandywineConservancy](http://www.facebook.com/BrandywineConservancy)

**General Contact person:**

Elissa Manuel, Administrative Assistant for Director of Environmental Management Center  
[ekall@brandywine.org](mailto:ekall@brandywine.org) 610-388-8340





### **History of Natural Lands Trust (NLT):**

In 1953, a group of avid birders foiled Gulf Oil's plans to dump dredging spoils in the Tinicum marshes, preserving what is now the John Heinz National Wildlife Refuge—the largest remaining freshwater tidal wetland in Pennsylvania. These men, who called themselves the Philadelphia Conservationists and would later become Natural Lands Trust, were at the vanguard of a movement that would gain momentum over the succeeding decades.

The Conservationists were led by an unlikely hero. Allston Jenkins was an accountant who attended ornithological classes as a way to get out occasionally and, according to his daughter, “enjoy a night away from the kids.” After the successful preservation of Tinicum Marsh, Jenkins went on to serve the organization for more than five decades.

Natural Lands Trust has grown into the largest and most comprehensive land trust in eastern Pennsylvania and southern New Jersey, and has saved more than 100,000 acres in its 60-year history. Each one of those acres is a testament to the vision and generosity of the organization's founders as well as the thousands of landowners, donors, volunteers, and community leaders who make their work possible.

### **Mission:**

Natural Lands Trust is a non-profit land conservation organization dedicated to protecting the forests, fields, streams, and wetlands that are essential to the sustainability of life in eastern Pennsylvania and southern New Jersey. NLT applies a comprehensive approach to conservation that includes permanently protecting natural areas, providing leadership in natural resource management, and creating opportunities for people to connect to and learn from nature.

### **Number of acres under conservation:**

Natural Lands Trust is somewhat unique among the region's land trusts because of their substantial commitment to owning land in perpetuity. The organization has always believed that saving land from future development is only the first step in conservation, that land also must be cared for—for the benefit of both people and wildlife.

### **Natural Lands Trust:**

- owns and stewards 41 nature preserves in 13 counties totaling 21,237 acres (Nearly 15,000 acres of this land is open to the public—free of charge, every day, and regardless of membership status.)
- holds 300 easements totaling 20,489 acres.
- NLT's affiliate organization, Montgomery County Lands Trust, holds 54 easements totaling 1,729 acres. (The two organizations merged in July of 2012.)

**Total: 43,455 acres**

(between both Natural Lands Trust and MCLT)

### **Upcoming projects in the next year:**

Upcoming projects include establishing their nature preserve, expanded conservation planning work in the city of Philadelphia, and recruiting and training the third class of skilled volunteers—Force of Nature. (Sign up for Natural Lands Trust's emails to be kept up-to-date on the latest conservation successes, preserve happenings, and events.)

Natural Lands Trust just finalized construction of the Lenfest Center at ChesLen Preserve (Unionville, Chester County). The 9,300-square-foot facility features green design elements such as geothermal heating and cooling, high-efficiency lighting, and recycled materials. While the majority of the facility is dedicated to storage and maintenance of preserve management-related equipment, it also includes offices for preserve stewardship staff, accommodations for volunteers, an outdoor pavilion for occasional events, and restrooms for preserve visitors.

(Cont'd)



(NLT Cont'd)

Constructed within the general footprint of an old cannery that was a remnant of the preserve's mushroom production history, the building site takes up 10,000 square feet less built area than before and one-third less paved surface. The architects designed the building to fit gracefully into the natural surroundings. Only one story of the building is visible from the road; a lower level was built into an existing slope so that it is not visible from most viewpoints. Landscaping further enhances the building's integration with the site.

Twenty acres of "gardens" include native grassland meadows, rain gardens, and more than one hundred native trees and shrubs.

The building is named for Gerry and Marguerite Lenfest, whose generous support has made the facility possible. ChesLen Preserve was established in 2007 as a result of a donation of land by the Lenfests and a trans-

fer of parkland from Chester County. A later purchase of 195 acres expanded the preserve to its current 1,263 acres.

Celebrate the Lenfest Center's first day open to the public with building tours, preserve walks, refreshments, and activities for the whole family! This event is free and pre-registration is not necessary.

**Lenfest Center at ChesLen Preserve Community Day**

**Sunday, June 16, 1:00-4:00 PM**

**Website info:**

[www.natlands.org](http://www.natlands.org) and [www.facebook.com/NatLands](https://www.facebook.com/NatLands)

**General Contact person:**

Kirsten Werner, Director of Communications

[kwerner@natlands.org](mailto:kwerner@natlands.org) 610-353-5640 x267



*Lenfest Center at ChesLen Preserve (rendering courtesy of Archer and Buchanan Architecture, Ltd.)*

**Opening Sunday June 16th, 1-4pm**

[www.natlands.org/LenfestCenter](http://www.natlands.org/LenfestCenter)

1199 Cannery Road, Newlin Township, Coatesville, PA 19320



### **History of The Land Conservancy for Southern Chester County (TLC of SCC)**

First formed in the 1970s by a group of concerned citizens as a grass roots open space committee, TLC was incorporated as a non-profit organization in 1995, and managed exclusively by an all-volunteer Board of Directors until 2004.

Today, TLC operates with a small but fiercely dedicated staff of both full-time and part-time employees, a host of interns, and a very active and involved Board of Directors. TLC focuses on establishing conservation corridors, protecting farmland and historic sites, creating walk-able communities and offering ecological education and outreach programming.

TLC is a Nationally Accredited Land Trust. Recognized by the Land Trust Alliance as a land conservation organization that meets national standards for excellence, upholds the public trust, and ensures that conservation efforts are permanent.

### **The Mission:**

Our mission is to ensure the perpetual preservation and stewardship of open space, natural resources, historic sites, and working agricultural lands throughout Southern Chester County.

### **Number of acres under conservation:**

To date TLC has conserved over 500 acres of land and owns and manages four nature preserves open to the public seven days a week from dawn to dusk.

### **Upcoming Projects**

- Active synergy of land conservation and historic preservation including prime agricultural lands.
- Preserving a one lane steel plate through girder bridge listed on the National Register of Historic Places.
- Championing a ten mile loop trail connecting TLC nature preserves with other community assets in downtown Kennett.
- Establishing a healthy *Land Reserve Fund* to assist Landowners in conservation.
- Introducing our *Conservation Stewardship Organization* (CSO) to assist landowners in planning and installing native grasslands and wildflower meadows, riparian buffers, and other earth friendly stewardship practices.
- Hosting the *Pennsylvania Master Naturalist Training* to create a network of environmentally conscious and informed volunteers.
- Gearing up for lots of excitement and adventure out on the land with our trail runs, full moon owl prowls, star gazing, bird watching and seasonal artistry.

**Website:** [www.tlcforscc.org](http://www.tlcforscc.org)

### **General Contact:**

Gwen Lacy, Executive Director

102 E. Street Road, KSQ, PA 19348

*Located in Willowdale next to Sovania Bistro*

[director@tlcforscc.org](mailto:director@tlcforscc.org) 610-347-0347 x 102





## THE LAND CONSERVANCY FOR SOUTHERN CHESTER COUNTY'S NATURE PRESERVES



### Marshall Mill House

Gateway into the Stateline Woods. Forty acres, 1.5 mile trail loop with parking area, map kiosk and picnic pavilion. Open for hiking, birding, photography, nature study, and other passive recreational activities.

932 Creek Road (Route 82), Kennett Square.



### Stateline Woods Preserve

Eighty-two acres purchased in 2008 with trails through fields and woodlands with great hilltop views and connections to trails within the State of Delaware Park Lands. Also the site of our annual spring trail run and wildflower workshops.

Canine Friendly! 814 Merrybell Lane, Kennett Square.



### Bucktoe Creek Preserve

Our Sister Preserve, a 300-acre, privately owned preserve focused on enhancing biodiversity, ecological stewardship, and environmental education. Please visit the preserve through one of our scheduled programs, or call to request a guided tour. Visit [www.bucktoecreekpreserve.org](http://www.bucktoecreekpreserve.org) for more information or email



### New Leaf Eco Center (Vincenti Preserve)

TLC's hands-on sustainability educational hub is fully equipped with a composting demonstration site, a three-hive apiary, bioswales, and a mycoremediation site with an up-and-coming edible forest garden.

Located on 11 acres of open space with a perimeter trail for public use.

776 Rosedale Road, Kennett Square.



### Marshall Bridge Preserve

Our second bi-state preserve adjacent to State of Delaware Park Lands. The historic Mason Dixon line runs through this property. An 80 acre parcel for walking, hiking, cross country skiing, birding, nature study, and environmental education. 378 plant species with 25 rare or notable plants.

Located behind Auburn Valley Parklands, accessed via Route 82 in the 600 block

**Buck & Doe Trust**

**P.O. Box 804**

**Unionville, PA 19375**

**History of Buck & Doe Trust**

The Buck & Doe Trust was established at the time of the King Ranch project to encourage community cooperation and support of the conservation easement program. The Trust seeks to welcome newcomers and offer opportunities for residents, new and old, to get to know one another better. The Board Members host the Spring Fling, a chuckwagon breakfast in the Laurels, a holiday party for members in December, and other activities which focus on “community conservation”.

**2013 Annual Dues            \$35 per family**

Payable to: Buck & Doe Trust and send to above address or use our website:

**[www.buckanddoetrust.org](http://www.buckanddoetrust.org)**

**Buck & Doe Trust Mission**

The Buck and Doe Trust is a non-profit organization of community members whose stated mission is support of land and water resource conservation within the Buck and Doe Run watersheds. These watersheds include, but are not limited to, the Townships of East Fallowfield, West Marlborough, East Marlborough, Highland, Londonderry, and Newlin.

The Trust initiatives to accomplish this mission are:

- Promote, through member involvement and education, the creation of additional high quality conservation easements within the Buck and Doe watersheds.
- Monitor and support active enforcement by easement grantees of all existing conservation easement requirements.
- Participate, influence, and monitor the stewardship of the Laurels Reserve by the Environmental Management Center of the Brandywine Conservancy.
- Initiate and encourage active and timely communication on land and water resource conservation issues within the Buck and Doe watersheds.

**Buck & Doe Trust Board Members**

Amy McKenna-President	Elizabeth Bailey	Suzanne Kloud	Bill Rubin
Joe Huston-Vice President	Jerry Brown	Brendan Miney	Janet Sidewater
Nina Seder-Burnaford-Sec.	Richard Buchanan	Jamie O'Rourke	Susannah Small
John Goodall-Treasurer	Terry Corkran	Maria Pfeffer	Pam Smyth
	Emily Harris	Scott Richard	

