

BUCK & DOE



TRUST



FALL 2024



**BRANDYWINE  
CONSERVANCY  
ESTABLISHES  
ITS FOREVER  
LANDS FUND**

The Conservancy recently established the **Forever Lands Fund** as an important land protection funding pool to strategically acquire conservation easements and fee lands. Building upon its proven track record of conservation successes, the Conservancy is planning into the future to ensure dollars are always available for important land protection projects.

There are still many key parcels of land that need to be conserved, and the opportunity to protect a key parcel of land may only come once in a generation. The Forever Lands Fund ensures that when those key parcels are at a transition point or at risk for development, the Conservancy possesses the funds needed to act rapidly to protect these properties in perpetuity. If interested in helping the Conservancy protect the region's landscapes forever through a contribution to the Fund, please contact **Jane Allsopp**, Chief Development Officer, at [jallsopp@brandywine.org](mailto:jallsopp@brandywine.org).

## 40TH ANNIVERSARY OF THE KING RANCH PROJECT

This fall marks the 40th anniversary of the Brandywine Conservancy's largest and most important conservation project of its time; The preservation of the **Buck and Doe Run Valley Farms** property, then owned by, and known locally as the **King Ranch Project**. It was the largest preservation project on the East Coast and became a model for private trusts nationwide.



**SANTA GERTRUDIS CATTLE**

Prior to the King Ranch Project, primarily in the 1970's and early 1980's, limited conservation easements had been placed on area properties. These early easements addressed steep slopes, wetlands and stream corridors. Approximately 700 acres were eased with these limited easements. We are grateful to the "founding families" who were among the early conservationists of our area. *(continued p5)*

SUPPORTING  
LAND AND WATER  
RESOURCE  
CONSERVATION

**PRESIDENTS LETTER**

*Dear Neighbors and Friends,*

The 40th anniversary of the King Ranch Project is a remarkable milestone, representing four decades of success in conservation and community enrichment. It began with preserving 5,400+/- acres, which has since expanded today to over 40,000 acres of protected land. This achievement is a testament to visionary planning, sustained perseverance, and the support of a dedicated community.

This effort has ensured the protection of one of the largest regions of privately conserved land on the East Coast, benefiting both the ecosystem and enhancing the quality of life for those who live in and around the area. The numeric milestones, such as anniversaries and the acreage under protection, are impressive, but equally valuable are the everyday experiences this preservation has made possible. Whether it's the tranquil drives, awe-inspiring sunsets, or

peaceful walks through the countryside, the intangible benefits to those who live and visit are truly priceless.

In reflecting on this conservation achievement, it's essential to recognize the foresight of those who began this journey and the ongoing dedication of individuals and groups who continue to safeguard these lands. Without this alignment of vision and action, the outcome could have been very different, underscoring the importance of continued conservation efforts for future generations.

On behalf of the entire Buck & Doe Trust Board, I extend my deepest gratitude to each of you for your contribution to the preservation effort!



**Amy McKenna** – President  
AmyMcKenna123@aol.com

**COMMUNITY NEWS:**

**BIRTHS:**

**Amelia Diamond & Spencer Verney**  
*welcomes baby boy, Penn*

**MARRIAGES:**

**Remy Winants & Charles Diaz**

**PASSINGS:**

**Vivian Lasko**

**NEW LANDOWNERS:**

**Heliett and Mike Sanchez,**  
*Highland Township*

**Catharine Thurston and Diego Levett,**

*East Marlborough Township*

**Jim Wagner,**

*Newlin Township*

EASED MEMBERS  
**Texas BBQ**



**PRIVATE EVENING HOSTED BY BUCK & DOE TRUST HONORING EASED MEMBERS OCTOBER 11TH**

*Watch for invitation*

**INVITEES RSVP**

by October 3th  
Maria Pfeffer:  
mariabpfeffer@gmail.com



ART PRINT : ENIKÓ EGED - RED STARRED BOOTS



**HELP SAVE CREBILLY FARM.** *It's the chance of a lifetime.*



CREBILLY FARM - MARK WILLIAMS PHOTO.

**Crebilly Farm.** Once slated for more than 300 Toll Brothers homes, it is among the largest remaining open spaces in our region. **Rustling meadows. Rolling fields. Historical buildings. Meandering streams. Birds and wildlife. An oasis of green in a growing part of Chester County.**

After two years of dedicated effort, **Natural Lands** is within striking distance of preserving the entire property forever—including 206 acres that will become a Westtown Township-owned, passive-use park, open to the public free of charge, year-round.

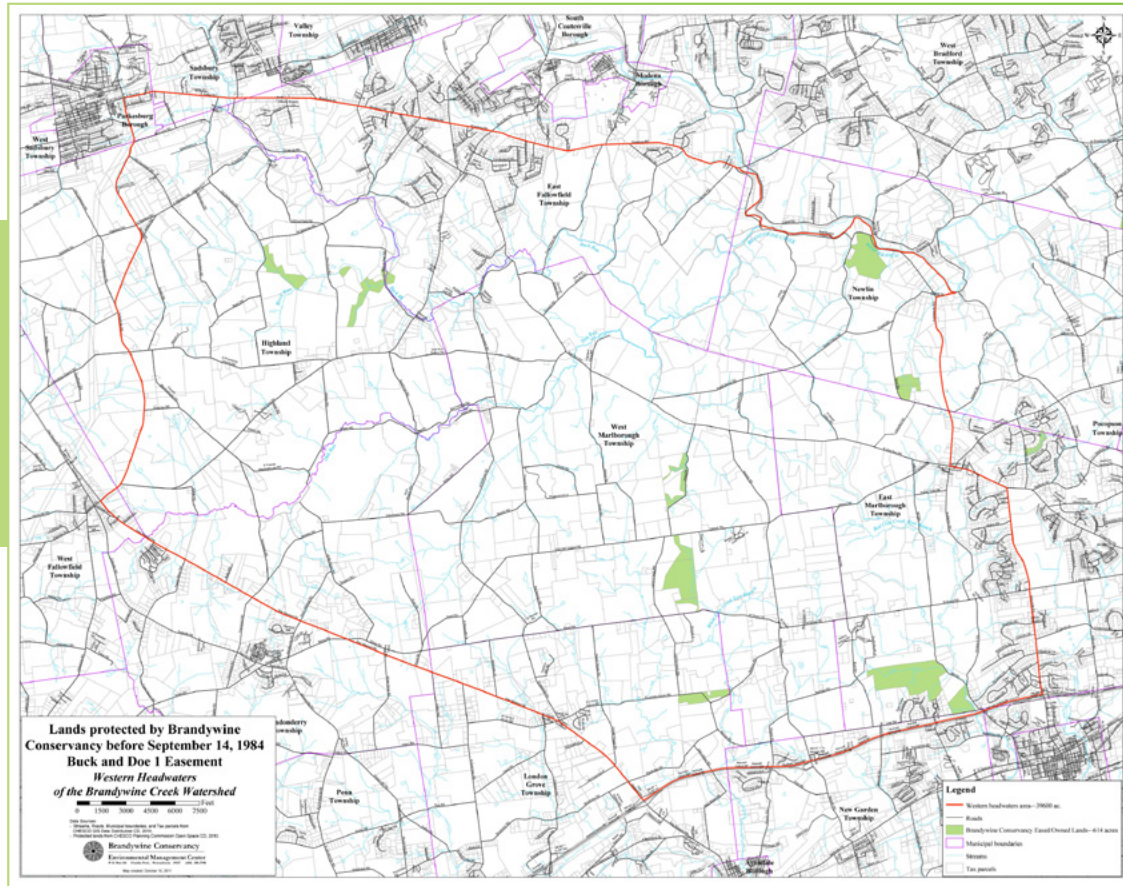
With an October 31st fundraising deadline looming, the **Save Crebilly Campaign** needs all the help it can get to unlock a \$2 million challenge, which is matching every contribution Natural Lands receives dollar-for-dollar.

Natural Lands would love members of **Buck & Doe Trust** to consider a Save Crebilly Campaign gift that will be doubled instantly for even greater impact. Friend by friend. Gift by gift. We're all for more

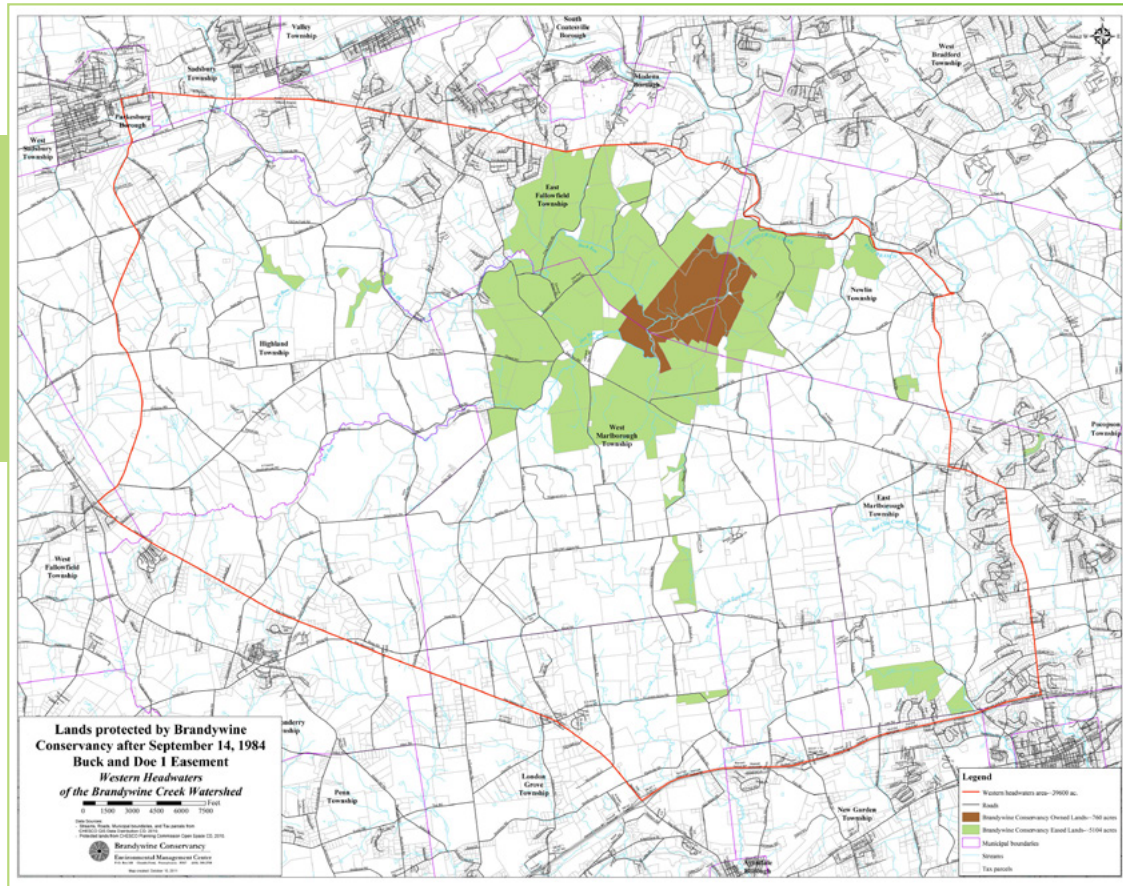
Chester County protected open space! Visit [savecrebilly.org](http://savecrebilly.org) to make a gift today.



**PRIOR TO 1984**  
STEEP SLOPES  
AND WETLAND  
EASEMENTS -  
APPROX  
700 ACRES  
EASED



**1984**  
KING RANCH  
PROJECT -  
APPROX  
5,400 ACRES  
EASED



**40TH ANNIVERSARY** *(continued from cover)*

The following were among this group, and includes the year they placed a steep slopes/wetlands easement on their property:

**1976:**

- Mrs. Hannum,**
- John/Barbara West,**
- Miles/Joy Valentine,**
- Anita Weisbro**

**1978:**

- Lewis/Eve Ledyard**

**1979:**

- John/Dolly Fisher,**
- Sid/Edie Thayer,**
- Helen Young**

**1980:**

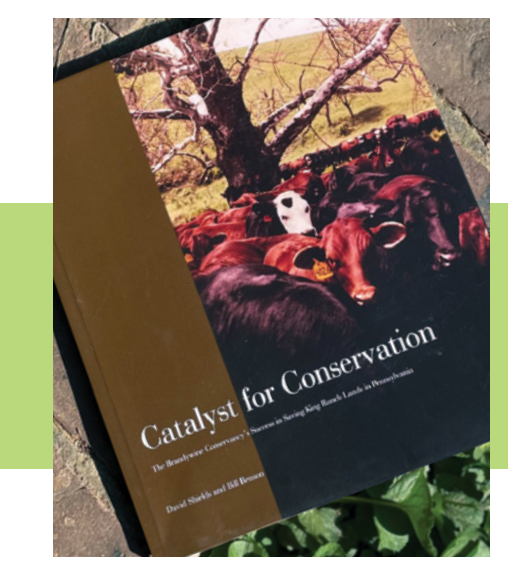
- John/Nancy Mohr,**
- Peter/Claudia Somers**

After the steep slopes/wetland easements approach to conservation, the focus was then put on the prime agricultural lands that, historically, developers had sought. This became of prime importance as developers and other purchasers of large land holdings showed keen interest (*with purchase contracts*) in the **King Ranch** area. Several visionaries and the **Brandywine Conservancy**, after much planning and many late nights, put together a \$13 million (*over \$39 million in today's dollars*) limited partnership to purchase and preserve the almost 5,400 acres. And so began the **“King Ranch Project.”**

These actions provided a vital nucleus that has expanded today to **over 40,000 acres of contiguously preserved acres.** We have the following members of the original partnership to thank for their efforts:

- Ms. Caroline Alexander**
- Ms. Emory G. Alexander**
- Ms. Dorothy D. Alexander**
- Mr. Richard M. Armstrong, Sr.**
- Mr. Wallace L. Bostwick**
- Mr. Arthur O. Choate**
- De Trampe Home**
- Dr. William Elkins**
- Mrs. Phil F. N. Fanning**
- Mr. & Mrs. John Gayer**
- Mr. & Mrs. Donald S. Jefferis**
- Dr. Elinor B. Jenny**
- Mr. Richard I. G. Jones**
- Mr. David W. Kirby**
- Mrs. Jane du Pont Lunger**
- Ms. Claire Reid**
- Mr. Jeffrey Seder**
- Mr. & Mrs. George Strawbridge Jr.**
- Mrs. Miles Valentine**
- Mr. Alan Wood**
- Mr. Daniel J. Snyder**

Many of the above partners came away with a piece of the King Ranch lands.



The following families were able to purchase an original tract from the Partnership. Many still own (*or a family member owns*) the property today, almost 40 years later!!!!

- Ms. Henrietta Alexander**
- Mr. & Mrs. Henry Brown, III (Cookie and Jerry)**
- Mr. & Mrs. Russell Carrier**
- Dr. & Mrs. Robert Forney**
- Drs. Barbara Forney & Bob Huxster**
- Mr. & Mrs. Richard Ireland**
- Mr. & Mrs. Ronald Juvonen**
- Mr. & Mrs. Richard McClatchy, Jr.**
- Mr. & Mrs. John McKenna, Jr.**
- Ms. Jennifer Nilsen & Mr. Authur DeLeo**
- Mr. & Mrs. Ralph Roberts**
- Mr. & Mrs. Michael Rotko**
- Mrs. Kathleen Snyder**
- Mr. & Mrs. Hale Truitt**
- Mr. & Mrs. Richard Vermeil**

The Buck & Doe Trust community sends their deep appreciation to all involved over the years and for the continued preservation effort today!!!!

For complete details, please refer to the book



**“Catalyst for Conservation - THE BRANDYWINE CONSERVANCY'S SUCCESS IN SAVING THE KING RANCH LANDS IN IN PENNSYLVANIA”**

PUBLISHED IN 2010.

# FIELD MANAGEMENT GUIDELINES

## for Chester County's Grassland Birds



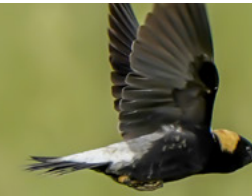
**Grassland birds are declining more than any other group of birds.** These declines have been attributed to changes in farming practices and increased land development resulting in habitat loss and fragmentation. These trends are increasingly exacerbated by changing weather patterns that disrupt traditional farming cycles. Chester County's working grasslands are home to some of the most threatened species of birds.

With the large amount of grasslands in Chester County, farmers and landowners are working together to ensure the local survival and well-being of these vulnerable species by establishing "bird friendly" field management practices. Locally, we are creating a grassland bird conservation area made up of working landscapes where partners address the issues affecting declining grassland species. This guide is intended for farmers and landowners who want to help grassland birds and have some flexibility in their management approaches throughout the year.

**What birds to expect and when?** Grassland use varies by species and by season. We can expect to find certain birds based on a field's characteristics. Below are the habitat preferences for the focal grassland species of Chester County and other species associated with grasslands.

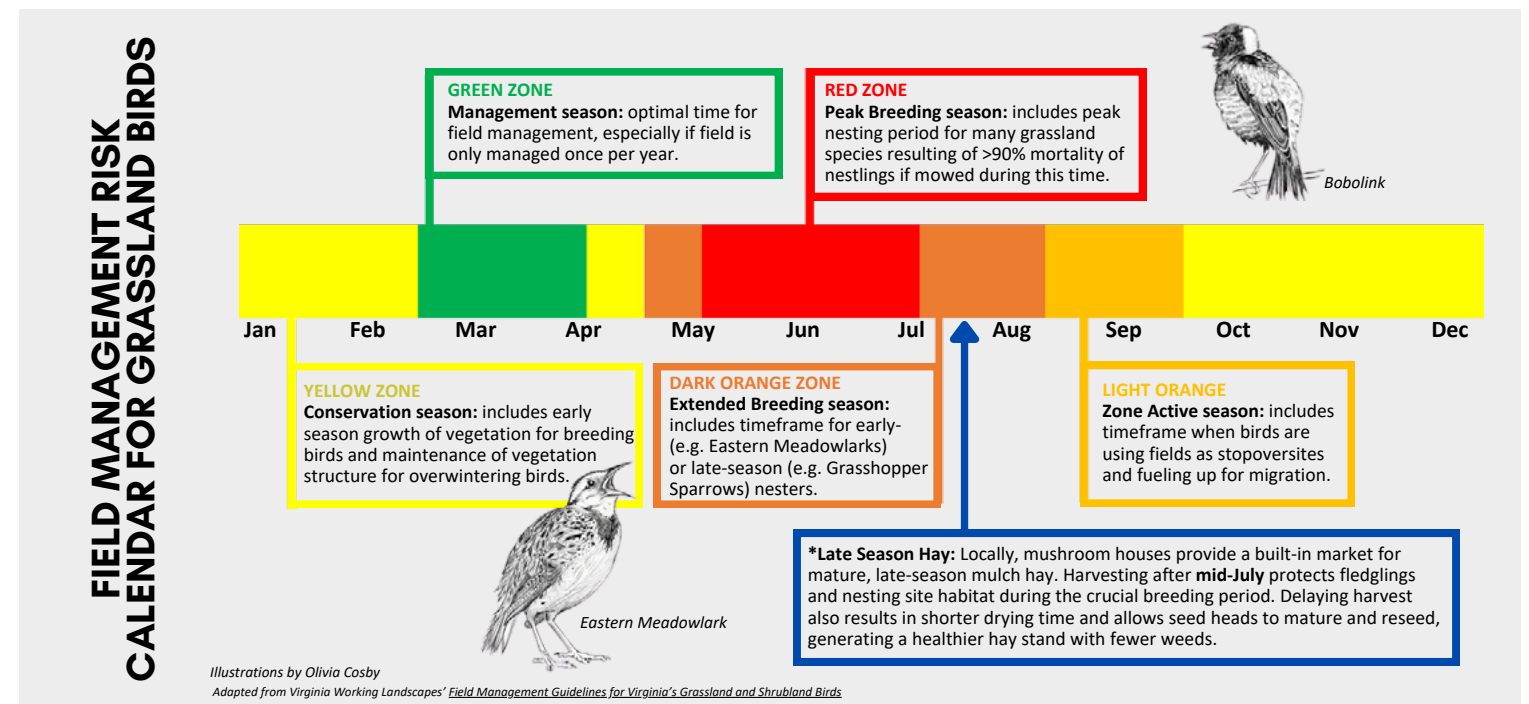
|                              | SPECIES   | TIME OF YEAR  | HABITAT PREFERENCES   |
|------------------------------|---|---------------|---|
| FOCAL SPECIES                |  <b>BOBOLINK</b>               | Spring/Summer | Large, open cool-season hayfields and pastures intermixed with broad-leafed wildflowers           |
|                              |  <b>EASTERN MEADOWLARK</b>    | Spring/Summer | Large, open cool-season hayfields and pastures with areas of sparse vegetation                    |
|                              |  <b>GRASSHOPPER SPARROW</b>  | Spring/Summer | Large, open cool-season hayfields and pastures with short vegetation                              |
| GRASSLAND ASSOCIATED SPECIES |  <b>AMERICAN KESTREL</b>     | Year-round    | Open grassland habitats including meadows, pastures, and hayfields                                |
|                              |  <b>EASTERN BLUEBIRD</b>     | Year-round    | Wide range of grasslands but requires cavities for nesting and multiple perches                   |
|                              |  <b>EASTERN KINGBIRD</b>     | Spring/Summer | Wide range of grasslands but requires cavities for nesting and multiple perches                   |
|                              |  <b>FIELD SPARROW</b>        | Spring/Summer | Both warm- and cool-season meadows containing ample wildflowers and shrubs                        |
|                              |  <b>NORTHERN HARRIER</b>     | Winter        | Large grasslands with sparse/short grass for hunting and patches of tall/dense grass for roosting |
|                              |  <b>RED-WINGED BLACKBIRD</b> | Year-round    | Wide range of grasslands, higher densities in wet areas with patches of thick vegetation          |
|                              |  <b>SHORT-EARED OWL</b>      | Winter        | Large grasslands with sparse/short grass for hunting and patches of tall/dense grass for roosting |

## WHAT YOU CAN DO?



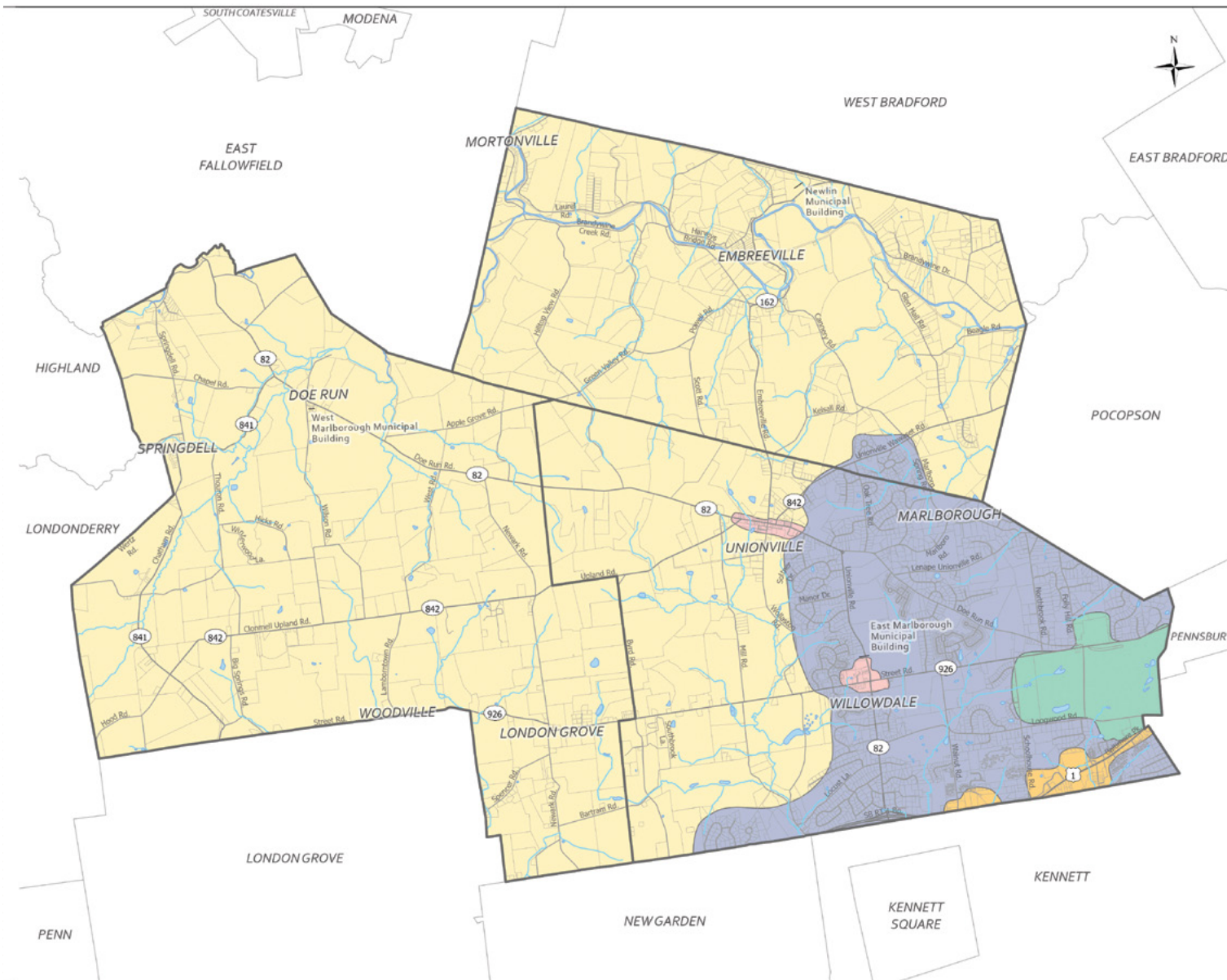
1. If possible, delay mowing until mid-July. If circumstances require earlier cutting, try to do so by mid-May and wait at least 65 days before the next cut. This first cut may disturb nesting birds, but it is early enough that they may have an opportunity to re-nest. Waiting the 65 day period will allow most species to successfully fledge at least one clutch of young.
2. If there is flexibility in the mowing and management schedule, focus on mowing smaller fields first and work your way up to larger fields. You can also manage larger fields in patches to leave undisturbed areas and varying structure and cover for birds year-round. Larger fields (>30 acres) tend to have a higher density of grassland nesting birds.
3. Increase cutting height to a minimum of 6-8 inches. This leaves protective cover for nesting grassland birds and their fledglings, and it helps promote healthy root systems and soil health. Attaching flushing bars or dangling chains to the front of your tractor will help flush young birds from the mower's path.
4. Promote connectivity of grasslands by creating "neighborhoods" made up of several adjacent fields. Large expanses of connected grasslands and croplands are important for many grassland birds because they prefer open areas away from woodlands, which harbor predators.
5. Individual fields can be managed as part of a landscape mosaic, made up of hay fields, croplands, and pastures. Each field can contribute to bird conservation by supporting the particular habitat needs of species associated with agricultural fields.
6. Incorporate native grasses, wildflowers, and legumes into your fields to provide foraging opportunities and protective cover. This can also be in the form of buffer strips between crop fields and along edges.
7. If you have fallow fields that are managed once annually, the optimal time of year to rotary mow is February 15 to April 1. This leaves denser cover for overwintering birds and insects.
8. Install nest boxes for cavity-nesting species like American Kestrels, Barn Owls, and Eastern Bluebirds.
9. Communication is key. Share how your management practices can benefit birds.

You make a difference! Implementing any of the practices can have a positive impact. For more information, visit [wctrust.org/the-grassland-bird-collaboration/](http://wctrust.org/the-grassland-bird-collaboration/) or email us at [znm@wctrust.org](mailto:znm@wctrust.org).

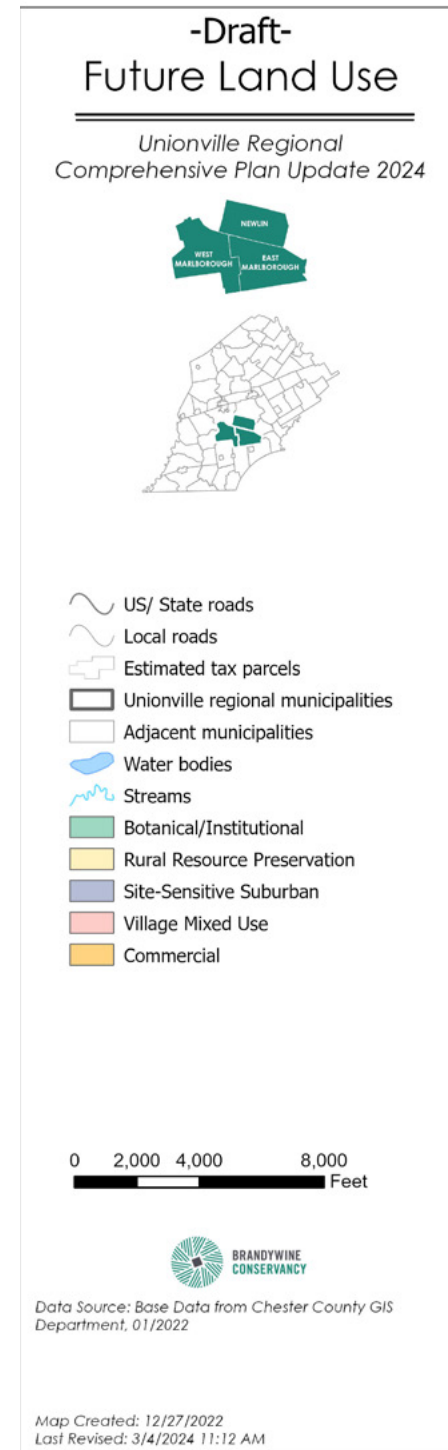


This publication is funded by a generous grant from the Cornell Land Trust Bird Conservation Initiative

## UNIONVILLE AREA REGIONAL COMPREHENSIVE PLAN UPDATE:



FUTURE LAND USE MAP UNIONVILLE REGIONAL COMPREHENSIVE PLAN UPDATE 2024



*Newlin, East Marlborough and West Marlborough Townships*

The **Pennsylvania Municipalities Planning Code (MPC)** is the enabling legislation (**Act 247**) that permits and guides municipalities in the Commonwealth to plan for their development and regulate land uses. More commonly referred to as the MPC, the legislation outlines a set of planning tools and establishes requirements for their implementation and regulation, especially with respect to public involvement and notice. One such planning tool is the Comprehensive Plan, a document that helps guide a vision for future land use, growth, preservation, housing needs, and community facilities and services at the municipal level. This document, according to the MPC, should be updated every ten years.

**The Unionville Area** (defined as the municipalities of East Marlborough, West Marlborough, and Newlin Townships) is nearing the end of its most recent update to their **Regional Comprehensive Plan**. While many municipalities plan individually, there are advantages to planning with your neighbors. By planning cooperatively, municipalities can share the responsibility of providing for their fair share of development in areas that are best suited; consider preservation efforts at greater geographic scales and provide for the efficient and cost-effective provisions of facilities and services, including recreation and public safety. The Unionville Area started to plan in this manner back in 2011.

The current update, partially funded through a **Chester County Planning Commission Vision Partnership Program** grant, is being led by the **Brandywine Conservancy's Municipal Assistance Program**, with assistance from **Tom Comitta and Associates**, a planning firm based

in **West Chester**. The Brandywine Conservancy's active involvement in the conservation and stewarding of thousands of acres within the area known as the **King Ranch** (which is centered in the Unionville Region), made them a suitable choice to complete this important planning project.

While led by Brandywine Conservancy staff, the Update is guided by a Task Force made up of the Regional Planning Commission, which consists of one member of the Board of Supervisors and one member of the Planning Commission from each participating municipality.

In addition, the process is overseen by a staff member from the **Chester County Planning Commission**. Critical to developing the vision and goals of the Comprehensive Plan is the active involvement and input from residents and key stakeholders of the area, including the **School District** and local business owners. Input from these groups was obtained through a public survey, a **Community Visioning Session** held at the **Unionville High School**, individual and group interviews and discussions with stakeholders, and through a presence at the **Unionville Community Fair**. (continued p 10)

### THE CONSERVANCY'S APPROACH TO THE COMPREHENSIVE PLAN HAS BEEN TO FOCUS ON FIVE KEY ISSUES THAT ARE IMPORTANT FOR THE REGION:

- 1 Open Space Priorities;
- 2 Historical Resources;
- 3 Guiding Growth;
- 4 Coordinated Parks and Recreation;
- 5 And Resiliency.

# SUPPORTING LAND & WATER RESOURCE CONSERVATION

These key issues are explored in more detail within the plan and a set of planning considerations, goals and strategies are proposed. Overall, the Plan provides a framework to ensure the Region stays much like we know it today, with a focus on preserving and stewarding our natural areas, ensuring our agricultural economy and producers are supported, that growth is constrained to the areas that can best support it (*along the Route 1 corridor and at an appropriate scale within our villages*), our historical resources are protected and appreciated, a suite of community services and facilities provide for and promote a healthy, active and connected community, and that our region's natural and built environment is resilient and able to plan for, adapt, mitigate, and react to the impacts we experience from increasingly frequent extreme storm and other weather events.

One critical element of the Plan is to define general regional land use, which is accomplished through what is known as a future land use map (*see p8*). This map establishes a general policy guide

for land use in the **Unionville Region** over the next 10-20 years. It provides a geographical vision for municipal policy and action as it pertains to land use, development, and preservation, helping to guide and shape the regulatory provisions of each Township's Municipal Code (*such as Zoning and Subdivision and Land Development Ordinances*). As you will see from the map, much of the Region is defined as **Rural Resource Protection**, where the expectation is for low-density, scattered rural homesteads, hamlets, and residential uses with discreet, small-scale, rural focused commercial activities. The next largest category is **Site-Sensitive Suburban**, which envisions residential uses with access to community facilities and where any future growth complements existing development and protects natural resources and the areas rural and historical heritage. Smaller areas depict land uses that are consistent with small-scale commercial enterprises, provide appropriately scaled housing, and that are connected and community focused within the villages of **Unionville** and **Willowdale**. Heavier

commercial uses are constrained to the Route 1 corridor and lands owned by **Longwood** are designated in support of the world-renowned botanical garden, recognizing the benefits they provide to the community, especially from the appropriate and continued stewardship of the natural areas that surround its core gardens.

After a nearly two-year process, the Comprehensive Plan is in its final stages, with adoption anticipated early this fall. Upon adoption, the Comprehensive Plan provides a guide for Township officials, administrative staff, and the various boards and commissions in each municipality and should be referenced frequently during municipal business. **For more information on the Unionville Area Regional Comprehensive Plan**, reach out to either the **Township Manager** for East Marlborough Township, or **Rob Daniels**, Manager of Community Services at the Brandywine Conservancy.



## PAID BDT MEMBERS 2024

|                 |                               |
|-----------------|-------------------------------|
| Abbott          | Rick & Dixie                  |
| Allen III       | Mrs David F.                  |
| Aller           | Jamie                         |
| Armpriester     | Stephanie                     |
| Balick          | Claudia Schultze & Bruce      |
| Bailey          | John & Liz                    |
| Bartholomew     | Lydia                         |
| Basler          | Tracy & Chris                 |
| Natural Lands   |                               |
| Bentley         | Greg & Caroline               |
| Blaine          | James & Joan Stroud           |
| Blaine Webb     | Gayley                        |
| Blaine          | Daniel & Martelle             |
| Blaine Haggerty | Annie & David                 |
| Blauner         | Peter & Mary                  |
| Branum          | Patricia                      |
| Brewer          | Terry & Laurie                |
| Bright          | Clayton & Starr               |
| Bristol         | Dale Melton & Joan            |
| Brown           | Susan Garber & Ed             |
| Brown           | Drs. Barbabara Stewart & Dick |
| Brown           | Tina                          |
| Hurlbut         | Eliza (Brown)                 |
| Brumfield       | Tom Lodise & Pam              |
| Buchanan        | Richard & Cindy               |
| Bucklin         | Katherine & Michael           |
| Carlino         | Anne                          |
| Chalfin         | Kate & Jake                   |
| Chauner         | Carolyn Worthington & David   |
| Clark           | Leah                          |
| Clark           | Linda                         |
| Clark           | Elizabeth                     |
| Clemens         | Danielle Alura & Curt         |
| Cook            | Anita & Don                   |
| Conway          | George                        |
| Corkran         | Richard & Terry               |
| Coyne           | Anna                          |
| Coyne           | Charlie                       |
| Criville        | Valerie Peeples & Joe         |
| Crompton        | Ms. Kathleen                  |
| Dang            | Rebecca                       |
| D'Amico         | Sharon & John                 |
| Davidson        | Carol                         |
| Debenham        | Mr. William                   |
| DeCosta         | Grant & Karen                 |
| DeMarino        | Ed Weisbrod & Dr. Betsy       |
| DesJardien      | Lorraine                      |
| Detering        | Hank & Marty                  |
| Dick Brown      | Drs. Barbara Stewart and      |
| Dillow          | Joan & Rocky                  |
| Dixon           | Jeff Itell & Wendy            |
| Driscoll        | Phoebe                        |
| Dugan           | Vince & Janice                |
| Duprey          | Margaret & Bob                |
| Dyer            | Ann & Brad                    |
| Edgar           | Clifton & Suzanne             |
| Elkins          | Helen & Bill                  |
| Emslie          | Tanya                         |
| Supervisor      | Londonderry Township-         |
| Feathers        | Bob & Linda                   |
| Fenza           | Rob                           |
| Ferretti        | Ellen                         |
| Fields          | Ann & Greg                    |
| Fisher          | John & Dolly                  |
| Fisher          | Rush & Phoebe                 |
| Fleischmann     | Charlie & Blair               |
| Flood           | Margaret                      |
| Forney          | Marilyn                       |
| Francis         | Ron & Linda                   |
| Galloway        | Joan                          |
| Gardner         | Tim & Nina                    |
| Geiger          | Jim & Sue                     |
| George          | Deeg & Jenna                  |
| Giacchino       | Ann & Joe                     |
| Glaccum         | Ellie                         |
| Glaccum         | Denis & Bambi                 |
| Glaccum         | John Amory & Whitney          |
| Goodall         | John & Celia                  |
| Goracci         | Grace                         |
| Gordon-Watson   | Alexander & Kristine          |
| Grabosky        | Doug & Kirstie                |

|             |                           |
|-------------|---------------------------|
| Gracie      | Michael & Camille         |
| Crafton     | Wayne, Marjorie & Melissa |
| Greenberg   | Gary & Angela             |
| Gross       | Stewart & Stacey          |
| Gross       | Abigail & Stephen         |
| Gross       | Dick & Holly              |
| Hall        | David & Jennifer          |
| Hambleton   | Dave Starr & Ann          |
| Hammerle    | Nancy Jones & Fred        |
| Harper      | Kerry & John              |
| Harris      | Michele                   |
| Harris      | George & Annie            |
| Harris      | Steve & Betsy             |
| Hartley     | Laura Reilly & David      |
| Hayne       | Meg & Dick                |
| Hendriks    | Mrs. Richard              |
| Hines       | Marilyn & Jack            |
| Hoffman     | Phil & Susan              |
| Horstmann   | Stephen & Megan           |
| Hood        | Kathleen                  |
| Huginar     | John                      |
| Hundt       | Alex & George             |
| Hunter      | Heather, Tucker & Tuck    |
| Huston      | Mr. & Mrs Joseph H        |
| Huxster     | Barbara Forney & Bob      |
| Jefferis    | Mrs. Donald               |
| Jenks       | Anthony & Susannah        |
| Jenny       | Jim Cornell & Babette     |
| Jenny       | Edward & Kim              |
| Johnston    | Susan Orsini & Robert     |
| Johnston    | Susan Orsini & Robert     |
| Johnston    | Janet                     |
| Jonas       | Daphne & Peter            |
| Jones       | Mrs. Annie                |
| Jones       | Russell & Donnan          |
| Jones       | Tim & Hillary             |
| Journey     | Sharon                    |
| Kahn        | Christine & Michael       |
| Kanara      | Erin Sylvester & Keith    |
| Kane        | Dr. & Mrs. Matthew        |
| Kane        | Lisa Hayes & Mathew       |
| Kaplan      | Jake & Becca              |
| Kenny       | Tom & Janet               |
| Kirby       | David                     |
| Krapf       | Betsy & Dale              |
| Lapides     | Ann                       |
| Lazzarini   | Adrienne & Ed             |
| Lawrence    | Representative John       |
| Legg        | Roger                     |
| Leinhausner | Dave                      |
| Lenfest     | Lauren                    |
| Leonard     | Tom & Kathy               |
| Lintner     | Caroline & Matt           |
| Logan       | Ginny                     |
| Lynn        | Jim & Lynn                |
| Mackinnon   | Ian & Mary                |
| Makanna     | Martha                    |
| Malone      | Mary Alice                |
| Manning     | Vickie & John             |
| Martin      | Boyd & Sylva              |
| Martin      | Buddy & Kate              |
| Martin      | Sara & CJ                 |
| Mattson     | Robert                    |
| Matz        | Michael & D.D.            |
| Maxwell     | Josh                      |
| McKenna     | John & Amy                |
| McNeil      | Jennifer                  |
| McNulty     | Ann                       |
| Meserve     | Fred & Patty              |
| Miller      | Patrice                   |
| Mooberry    | Doug & Pat                |
| Moorhead    | Rod & Alice               |
| Moran       | Michael & Anne            |
| Morrison    | Molly & Bob               |
| Moskowitz   | Marian                    |
| Moss        | John & Anne               |
| Munton      | Dr. William V.            |
| Murray      | Robert & Cintra           |
| Murray      | Norma & Brian             |
| Myers       | Doug & Kim                |
| Neilson     | Sanna                     |
| Nolan       | Missy & Joe               |
| Oliver      | Scott Worthen & Paula     |
| O'Rourke    | Jamie                     |

|                       |                              |
|-----------------------|------------------------------|
| Orr                   | Lucinda                      |
| Osborn                | Pru & Art                    |
| Pearson               | Bob & Loren                  |
| Pfeffer               | Bill & Maria                 |
| Politi                | Brooke & Nate                |
| Potter                | Dr. Mary Jane                |
| Powell                | Skip & Wendy                 |
| Prickett              | Caroline                     |
| Provinski             | Jessie & Matt                |
| Quillman              | Stuart & Libby, John & Haden |
| Reilly                | Dr. & Mrs. Frank             |
| Reynolds              | Robin                        |
| Richard               | Mamie Duff & Scott           |
| Richardson            | Laura & Dean                 |
| Robillard             | Addison Van Ness & Rob       |
| Rominger              | Dave & Cindy                 |
| Roosevelt             | Tom & Frances                |
| Rosato                | Donald & Judith              |
| Rothman               | Joe & Patti                  |
| Rotko                 | Meredith                     |
| Rubin                 | Bill & Lizzie                |
| Rush                  | Deborah                      |
| Sanchez               | Heliett & Mike               |
| Sappey                | Representative Christina     |
| Saunders              | Jesse & Rikki                |
| Scarlett              | Mr. Richard J.               |
| Scott                 | Paula                        |
| Scott                 | Mr. Edgar                    |
| Scott                 | Bob & Trish                  |
| Secor                 | Beth                         |
| Seder                 | Nina Burnaford & Jeff        |
| Sensenig              | J. Scott                     |
| Shaffer               | Ben Barnett & Missy          |
| Sharp                 | Bill & Liz                   |
| Shelling III          | Gwen Nelson & Raymond        |
| Shellington           | Geoff                        |
| Sidewater             | Janet                        |
| Siepsner              | Dr. & Mrs Steven B           |
| Simone                | Lou                          |
| Sinclair              | Ann Givens & James           |
| Slater                | Sam & Lornie                 |
| Slater                | Joy                          |
| Smith                 | Jon & Gail                   |
| Snyder                | Patrick Heron & Suzanne      |
| Snyder                | Kathleen                     |
| Somers                | Conrad & Elizabeth           |
| Somerville Manning    | Gallery                      |
| Spence                | Mr. John and Dr. Elizabeth   |
| Stewart               | Walt                         |
| Stewart               | Kay                          |
| Strawbridge           | Stewart & Elizabeth          |
| Strawbridge           | Julia & George               |
| Stroud Water Research | Dave Arscott, President      |
| Stroud                | Dixon & Lisa                 |
| Stroud                | Moose & Boo                  |
| Swayne                | Nancy                        |
| Teetor                | Margot & Chris               |
| Teter                 | Jane                         |
| Thayer                | Dixon & Gail                 |
| The Quaker City       | Foundation                   |
| Theriat               | Katherine                    |
| Supervisor            | Highland Township            |
| Supervisor            | Highland Township-           |
| Truitt                | Nancy                        |
| Tull                  | R.W.                         |
| Tull                  | Richard & Nadine             |
| Tully                 | Marilyn & Martin             |
| Tupitza               | Harriett & Jim               |
| Vannote               | Lizzie Verney & Burl         |
| Venditta              | Bill & Liz                   |
| Vermeil               | Dick & Carol                 |
| Verney                | Amelia Diamond & Spencer     |
| Walker                | Cuyler                       |
| Walter                | Sarah                        |
| Welling               | Peter                        |
| West                  | Amber                        |
| Wintersteen           | George & Gretchen            |
| Wisman                | Barbara & Scott              |
| Wister                | Diana                        |
| Wood                  | Alan                         |
| Wylie                 | Bill                         |
| Wylie                 | Peyton                       |
| Young                 | Heather                      |
| Young                 | Jeff & Holly                 |

## REMINDER OF A GREAT GIFT IDEA FOR THE HOLIDAYS:

The local history of the King Ranch makes a great holiday gift with: **Where are the Cowboys?** *Searching for the King Ranch Cowboys in Doe Run.* Author **Kathleen Hood** teamed up with the former **King Ranch Cowboys** and local artist **Randall Graham** to create a book that captures the essence of life on the ranch from the cowboys' perspective. Where are the Cowboys? provides information on the ranch operation, historic photos and videos, and is sure to be enjoyed by the entire family. All proceeds from the sale of this publication are donated to the **Brandywine Conservancy** thanks to the generosity of many local donors. **Order your copy in time for the Holidays** at the Brandywine's website:

[brandywinemuseumshop.org/SelectSKU.aspx?skuid=1011129](http://brandywinemuseumshop.org/SelectSKU.aspx?skuid=1011129)

**BUCK & DOE TRUST**  
P.O. Box 804  
Unionville, PA 19375

PRESORTED  
FIRST-CLASS MAIL  
POSTAGE & FEES PAID  
WEST CHESTER, PA  
PERMIT NO. 119

## HISTORY

THE BUCK & DOE TRUST WAS ESTABLISHED AT THE TIME OF THE KING RANCH PROJECT TO ENCOURAGE COMMUNITY COOPERATION AND SUPPORT OF THE CONSERVATION EASEMENT PROGRAM. THE TRUST SEEKS TO WELCOME NEWCOMERS AND OFFER OPPORTUNITIES FOR RESIDENTS, NEW AND OLD, TO GET TO KNOW ONE ANOTHER BETTER. THE BOARD MEMBERS HOST THE

### **SPRING FLING IN THE LAURELS**

(A CHUCKWAGON BREAKFAST), AND OTHER ACTIVITIES WHICH FOCUS ON "COMMUNITY CONSERVATION".

**2025 ANNUAL DUES  
\$40 PER FAMILY**

*Payable to:* **BUCK & DOE TRUST**  
MAIL TO OUR ADDRESS  
OR USE OUR WEBSITE

[www.buckanddoetrust.org](http://www.buckanddoetrust.org)

## MISSION:

### **THE BUCK AND DOE TRUST IS A NON-PROFIT ORGANIZATION**

OF COMMUNITY MEMBERS WHOSE STATED MISSION IS SUPPORT OF LAND AND WATER RESOURCE CONSERVATION WITHIN THE BUCK AND DOE RUN WATERSHEDS. THESE WATERSHEDS INCLUDE, BUT ARE NOT LIMITED TO, THE TOWNSHIPS OF EAST FALLOWFIELD, WEST MARLBOROUGH, EAST MARLBOROUGH, HIGHLAND, LONDONDERRY, AND NEWLIN.

### **THE TRUST INITIATIVES TO ACCOMPLISH THIS MISSION ARE:**

#### **TO PROMOTE, THROUGH MEMBER INVOLVEMENT AND EDUCATION,**

THE CREATION OF ADDITIONAL HIGH QUALITY CONSERVATION EASEMENTS WITHIN THE BUCK AND DOE WATERSHEDS.

#### **TO MONITOR AND SUPPORT ACTIVE ENFORCEMENT BY EASEMENT GRANTEEES**

OF ALL EXISTING CONSERVATION EASEMENT REQUIREMENTS.

#### **TO PARTICIPATE, INFLUENCE, AND MONITOR THE STEWARDSHIP**

OF THE LAURELS RESERVE BY THE ENVIRONMENTAL MANAGEMENT CENTER OF THE BRANDYWINE CONSERVANCY.

#### **TO INITIATE AND ENCOURAGE ACTIVE AND TIMELY COMMUNICATION**

ON LAND AND WATER RESOURCE CONSERVATION ISSUES WITHIN THE BUCK AND DOE WATERSHEDS.

## BOARD MEMBERS

**Amy McKenna** – President

**Richard Buchanan** – V. President

**Nina Seder-Burnaford** – Secretary

**John Goodall** – Treasurer

Pat Branum

Terry Corkran

Phoebe Driscoll

Mamie Duff

Keith Kanara

Jamie O'Rourke

Maria Pfeffer

Rob Robillard

Janet Sidewater

Susannah Small

Barbara Stewart

Lizzie Vannote

Maggie Buchanan II-Intern

