

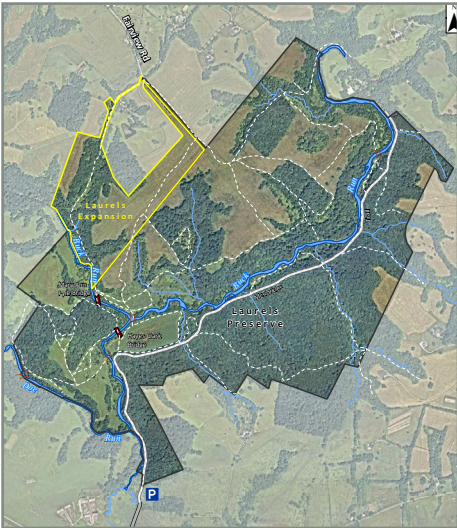
BUCK & DOE



TRUST



FALL 2021



# IT'S OFFICIAL! THE LAURELS PRESERVE IS GROWING THANKS TO THE COMMUNITY'S EFFORTS!

*Dear Friends,*

*As many of you already know, the Brandywine's Laurels Preserve offers the rare opportunity to be completely immersed in nature. This pristine property in Chester County, PA, features bountiful meadows, forests and creeks filled with iconic views, quiet sounds and hidden paths to wander and discover.*

*You also may remember that in late 2020 the Brandywine launched a \$2.6 million fundraising effort to purchase an additional 80+ acres of land, which were originally part of the late Ralph and Suzanne Roberts' farm, to expand the Laurels Preserve for the first time since its inception in 1985. The campaign was fueled and sustained momentum thanks to the generous support of many on the Brandywine's Board of Trustees, the Buck & Doe Trust, the Cheshire Hunt, several Brandywine staff, and so many of you—our members, donors and friends.*

*Today, with the help of our unwavering supporters, we are thrilled to announce the official acquisition of this stunning property—which is now and forever a part of the Preserve, taking it from 771 acres to over 850 acres of beautiful open space.*

*This acquisition, the first expansion of the Laurels Preserve since its formation, was an exciting labor of love and determination by those who view the Laurels as a beloved place for natural resource protection—whether that be a rare plant, a magnificent intact forest system or a more common winged visitor—and outdoor enjoyment. It's also a testament to the wonderful collaborative relationship between the community and the Brandywine Conservancy staff who work together to preserve and steward the precious lands and waters of this region. The Conservancy is extremely grateful to all who supported this exciting acquisition and truly made this possible.*

*Sincerely,*

*Ellen Ferretti, Director,  
Brandywine Conservancy*



**BRANDYWINE  
CONSERVANCY**

SUPPORTING  
LAND AND WATER  
RESOURCE  
CONSERVATION

## PRESIDENTS LETTER

We truly want to applaud the conservation community for coming together to support the **Brandywine Conservancy** in their purchase of the additional 80± acres for **The Laurels Preserve!!!**

There is an old adage: *Preservation is not a result of one person nor one event at one time, but many people, many events over many years.* **BDT** has been honored to be a part of numerous conservation efforts since our creation over the last 35 years! These efforts, among others,

include: raising funding for the Laurels Endowment for purposes of maintaining the Laurels, placing a conservation easement on the Laurels which had not been accomplished in the original **King Ranch** project and leading the successful covered bridges restoration campaign.

Today we are honored to have joined generous donors, the **Cheshire Hunt** and others in the **BDT** community to successfully raise the needed funds that has allowed for this recent expansion from 771± acres to 850± acres. A series of events spanning decades, along with very committed people in our community, have taken this once

“industrial” community from rolling mills to a pristine nature preserve. The Laurels Preserve, the hub of the conservation movement of over 30,000 acres, in now grown even larger and stronger! A special, heartfelt thanks to all who have made this happen!

Finally, a gentle, though strong, reminder we must continue our efforts to keep our conservation community strong today, tomorrow and into the future as we must never take any of it for granted!

*Amy*

**Amy McKenna** – President  
AmyMcKenna123@aol.com



## COMMUNITY NEWS:

### BIRTHS:

**Tim Coleman and Elliott Miller,** baby girl, Noah

**Stephanie and Ivan Dowling,** baby girl, Aoife

### MARRIAGES:

**Erin (Nolan) & Joel Simone**

**Amelia Diamond & Spencer Verney**

### NEW LANDOWNERS:

**Leah Clark**

**Anita & Don Cook**

**Daphne & Peter Jonas**

**Kathy Neilson**

**Potter Group/Walter Puddifer**

**Amelia Diamond & Spencer Verney**

### PASSINGS:

**Joe Collela**

**Dave George**

**Nancy Mohr**

**Kenny Young**

## A SPECIAL TRIBUTE TO A TRUE NEIGHBOR AND FRIEND OF THE CONSERVATION COMMUNITY:

**Nancy Mohr** was a writer, a life-long community volunteer, taught at **Upland Country Day School**, and counseled non-profit organizations in fundraising and public relations (closely working with the **Leonardo Horse**, the dramatic gift from America to the people of Italy). She worked with the Brandywine Conservancy in



**NANCY MOHR** (1933-2021)

establishing its Headwaters Programs, involved with the **King Ranch** project and the **Buck & Doe Trust**, conservation easements including five townships, **Unionville, Cheshire Hunt**, and generations of farm families. She was co-founder of the **Kennett Revitalization Task Force**. As emeritus president of **Chester County 2020**, Nancy created and crafted **Community Conservations** to help reach consensus on community issues.

Nancy served eighteen years on the **Chester County Planning Commission**, chaired the county’s **Task Force on Tax Reform**, and received the Agricultural Development Council’s award for her “passion, dedication and service”. She authored **The Lady Blows a Horn**, a biography of **Nancy Penn Smith Hannum**, the Cheshire Hunt’s legendary Master of Hounds. She also wrote **Delicious Memories**, other books and numerous articles in national magazines. An admitted “newspaper junkie”, she was frequently represented on the commentary pages of the **Philadelphia Inquirer** and wrote for local and regional newspapers.

Nancy is survived by her husband, **John Mohr**, two daughters, three sons and thirteen grandchildren.

*We will all miss you Nancy!*



# SUPPORTING LAND & WATER RESOURCE CONSERVATION



**LATEST GENERATION OF  
NEW SIGNS AVAILABLE THIS YEAR**

## HAVE YOU SEEN THE SIGNS?

**New Signs.** Upon closer look of our many local farms, one will likely see a sign recognizing the property is a part of an important conservation area. Shown here are various versions of these signs that have been made available through the years and continue to be on these properties today. Please contact the **Brandywine Conservancy** if you are in need of a new “**Conservation Area**” sign. These updated signs are available in large (11.5” x 11.5”) and small (7.5” x 7.5”).

For more information or to request a new sign, please contact:

**Kristen Frentzel**  
kfrentzel@brandywine.org  
610-388-8391

**John Goodall**  
JGoodall@brandywine.org  
610-585-2602



EXAMPLES OF CONSERVATION SIGNS  
USED THROUGH THE YEARS WHICH ARE STILL DISPLAYED TODAY

## A GENERATIONAL CONNECTION TO THE LAND

### STROUD WATER RESEARCH

Landowners are partnering with Stroud™ Water Research Center in a community effort to protect and improve the stream’s health by reforesting more than 100 acres of streamside areas. Their vision and generosity is exceptional in both the total acres of tree plantings and the width of the riparian buffer — most achieving the gold standard of 100 feet of trees on each side of the stream.

“Finding one individual willing to make this level of commitment is rare. Finding many such persons in one small

watershed happens only once or twice in an entire career,” says **David Wise**, watershed restoration manager and project leader for the **Stroud Center**. “It truly is amazing and wonderful what they are doing.”

Ask them their motives and you hear of concern for land and water, for community, and for the future. **Carol Davidson** says, “I care about the land and our community. And the most significant staple is water.” **Buzz Hannum** adds, “It’s a community effort that I want to support.” Buzz and Carol are siblings that grew up in the watershed, (*continued on page 6*)

## NEW FACES IN CONSERVATION



**CLINT FOREST MAUST** NEW PRESERVE STEWARD AT THE LAURELS



**BRANDYWINE  
CONSERVANCY**

### BRANDYWINE CONSERVANCY

#### Clint joins the team in the Laurels Preserve:

**Clint Forest Maust** joined the Brandywine Conservancy team as a new preserve steward at the Laurels. Mautz grew up in a lake community in Highland Lakes, NJ. He has a Bachelor of Science degree in Environmental Sustainability and a minor in Biology from **William Paterson University** in Wayne, NJ. Eager to pursue a career in natural resource management and conservation, Mautz learned various arboricultural skills such as tree identification, pruning, planting and advanced removal techniques, and previously worked with the **Bartlett Tree Experts** in West Chester, PA. Mautz and his fiancé, **Rebecca**, plan to get married next May 2022. Together

they share a two-year-old boxer/lab mix, named **Oakley**. Mautz enjoys camping, hiking, hunting and fishing and looks forward to working for the **Brandywine Conservancy**.

*Welcome Clint!*



#### Caroline and Evan join Brandywine Conservancy as new Easement Stewards:

**Caroline Fritschle:** Originally from Stamford, Connecticut, Caroline grew up volunteering at the only farm and nature center in town. Experiencing a slice of history before development pressures took hold, she learned to muck stalls and get lost in the woods. She went on to earn a BS in Environmental Science, a BA in Journalism, and a MS in Biological Oceanography from the **University of Connecticut**. After an 8-year hiatus in which she mastered the art of multitasking as a stay-at-home mom, she found her niche with **Chester County's Department of Parks and Preservation**, working in the **Farmland Preservation and Parks & Trails** programs. Protecting Chester County's natural resources and sense of place is her drive and passion, and she is thrilled to join the **Brandywine Conservancy & Museum of Art** in her new role as Easement Steward!

*Welcome Caroline!*



**Evan Hunt:** Originally from southeastern Pennsylvania, Evan has been heavily involved in environmental conservation throughout the region. His work experience includes ecological restoration, native plant propagation, and land steward-ship. Most recently he was the conservation associate at **Willistown Conservation Trust**



NEW EASEMENT STEWARDS  
**CAROLINE FRITSCHIE AND EVAN HUNT**

where he worked on conservation easement monitoring and a number of forest restoration projects. Evan holds a BS in environmental studies from **Ursinus College**. Welcome Evan and congratulations on joining Brandywine Conservancy as a new Easement Steward!

*Welcome Evan!*



**NICHOLE WICKENHAUSER.**  
STROUD DIRECTOR OF DEVELOPMENT



**TODD SAMPELL** VICE PRESIDENT OF CONSERVATION SERVICES



**Pennsylvania Conservancy** and went on to be **Director of Conservation Operations** and then **Deputy State Director at The Nature Conservancy's (TNC)** Pennsylvania chapter. At TNC he managed land protection and land stewardship programs and negotiated major acquisitions.

From there, Todd became State Director of **TNC's Missouri chapter** where he oversaw forest protection in the Ozarks, tallgrass prairie preservation, and urban conservation efforts in St. Louis. He later became **Deputy Director of Missouri's Department of Natural Resources** where he led the staff of the director's office, served as liaison to the Governor's office and legislature, led an operations improvement process, and helped launch an update to **Missouri's State Water Resource Plan**.

Most recently, Todd has served as President of **Friends of Virgin Islands National Park** in **St. John**.

*Welcome Todd!*



**GEORGE HUNDT, JR.**  
S.A.V.E. EXECUTIVE DIRECTOR

# S.A.V.E.

## S.A.V.E. BOARD OF DIRECTORS IS PLEASED TO ANNOUNCE

**S.A.V.E. Board of Directors** is pleased to announce the appointment of **George Hundt, Jr.** to the position of **Executive Director**. After eight years of serving in this capacity, **Blair Fleischmann** participated in the search for her replacement and will remain of the Board of Directors. Hundt brings to the position experience in environmental planning, land conservation, finance, and operations of non-profit organizations. With his deep connections to the area, he is well positioned to facilitate S.A.V.E.'s efforts to preserve the quality of life and community character of southern Chester County.

*Welcome George!*



## NATURAL LANDS

—**the region's oldest and largest land conservation organization**— announced it has hired **Todd Sampsell** as vice president of conservation services. Sampsell's 20-year conservation career spans the country, but his roots are in Pennsylvania.

Sampsell, who has both Bachelor's and Master's degrees in biology, began his career as **Director of Northwest Conservation Programs at Western**



## NICOLE WICKENHAUSER JOINS STROUD CENTER AS THE NEW DIRECTOR OF DEVELOPMENT.

Nicole brings a vast array of life experiences including a many-time marathoner, world traveler plus work experience such as Director of Strategic Alliances at **Water.org**. Nicole notes her passion for Stroud: "We have so much potential as an organization. We are doing incredible work. We have over half a century of expertise in fresh water. **The Stroud Center** is right in the bull's-eye of the most critical issues facing our world: climate change, food security, access to safe water, energy — our work touches all of them, so I feel like we have the potential to make step-change growth over the next few years." That will involve doing what she calls one of the most important things anyone can do: connecting people to their purpose and passion — and then giving them a way to take action.

*Welcome Nicole*





**FALL 2017**  
BEFORE PLANTING



**MAY 2018**  
FIRST GROWING SEASON



**AUGUST 2019**  
END OF SECOND GROWING SEASON

## FROM TUBE TO TREE IN FOUR YEARS. FORESTED BUFFER ON WOODVIEW ROAD AND RT. 41

(from page 3) steeped in community traditions, including fox hunting.

**Cuyler Walker** shares the same view, shaped by generational connection to the land. “When you see the generations pass and the land remains, it elevates your awareness of the importance of conservation.”

Like Carol, Buzz, and Cuyler, **Peter Welling** grew up on the farm where he now lives and looks to the community’s future. This is not Peter’s first time working with the Stroud Center; “The Stroud Center supported me in expanding the restoration project I started 20 years ago by fencing livestock out of the stream. Invertebrates, amphibians, and reptiles are appearing in greater numbers. As the trees mature, the stream will continue to restore itself. Only a little imagination is needed to envision the stream as it once was and can be again.”

### NEIGHBORS HELPING NEIGHBORS

**Jamie Hicks** manages the cropland on many of these farms and has been vital in supporting the Stroud Center’s efforts through exceptional management of soil health and encouraging other landowners to plant streamside forests. Among those that have also generously pitched in include **Lisa Hayes** and **Michael Kane** (who installed the widest of all buffers thus far), the residents of East Marlborough Township, and several landowners previously engaged to do buffers when **Bern Sweeney, Ph.D.**, was director of the Stroud Center (1999-2016).

**The Stroud Center** is pleased to continue with its part of the efforts with its **Red Clay Creek** watershed neighbors. The Stroud Center is providing the necessary funding to plant the trees and maintain them with support from the **Delaware River Watershed Initiative, National Fish and Wildlife Foundation,**

**Pennsylvania Department of Conservation and Natural Resources’ Bureau of Recreation and Conservation, Pennsylvania Department of Environmental Protection, Chesapeake Bay Foundation,** and others (*see below*).

The Stroud Center will also monitor stream recovery over time, documenting stream chemistry, temperature, and aquatic insect communities. As an added benefit, the Stroud Center is also conducting research trials of reforestation methods on selected sites:

- DOES ONE STYLE OF TREE SHELTER WORK BETTER THAN OTHERS?
- CAN STONE MULCH REPLACE HERBICIDES TO PROTECT TREES FROM RODENTS?
- CAN WE REDUCE MAINTENANCE MOWING AND STILL HAVE HIGH TREE SURVIVAL?

### REACHING 100 ACRES

It’s only fitting that the land where **Robin Vannote**, the Stroud Center’s first director, lived will provide a major



**JUNE 2021**  
FOUR YEARS AFTER PLANTING

milestone. In the spring of 2022, **Burley and Lizzie Vannote** plan to plant a streamside forest that takes the total acres restored on the Red Clay's west branch to over 100.

Robin Vannote was on site and part of the initial fall 2020 discussion with the Stroud Center's **David Wise** on coordinating the community efforts. As the group walked and talked, Robin recalled when wild brook trout once swam in the cool stream beneath the shade of trees. With a helping hand from the Stroud Center's neighbors and the grace of nature, perhaps they will again someday soon.

If you own land near a stream of water, or know someone that does,

and are looking for best management practices, the Stroud Center's **Robin L. Vannote Watershed Restoration Program** will work with you to determine a plan that advances your goals for your property while improving stream health.



BDT TRUST BOARD MEMBER  
**MAMIE DUFF**  
PLANTING TREES IN THE LAURELS

## ANNUAL MEETING

**DUE TO COVID CONCERNS, BDT WILL REFRAIN ONE MORE YEAR ON HOSTING OUR ANNUAL HOLIDAY PARTY FOR OUR EASED LANDOWNERS**

**BDT ANNUAL MEETING TO BE HELD BY ZOOM**

JOIN ZOOM MEETING  
4PM TUESDAY,  
DECEMBER 28TH, 2021

<https://us02web.zoom.us/j/82257505714>

## DAVID SHIELDS RETIRES FROM BRANDYWINE CONSERVANCY AFTER 38 YEARS!

After a long and esteemed career at the Brandywine Conservancy, Associate Director **David Shields** retired at the end of June 2021. Early on in his career with the Brandywine, David was instrumental to the success of the **King Ranch** conservation project, as well as the continual preservation efforts of the Conservancy to the present day. The year David started as a full-time employee, the Brandywine Conservancy had facilitated the permanent preservation of 5,165 acres of land. By the time of David's departure, that statistic had increased to over 68,000 acres of preserved lands. David leaves behind a legacy of protected forests, fields and streams; rolling scenic landscapes; world-class prime agricultural soils; and beauty as part of his 38-year career with the **Brandywine Conservancy.**



We all wish him a happy and much-deserved retirement.

*Thank you David!*



SCAN ME

**FOR MORE ABOUT WATERSHED RESTORATION**

**BUCK & DOE TRUST**  
P.O. Box 804  
Unionville, PA 19375

PRESORTED  
FIRST-CLASS MAIL  
POSTAGE & FEES PAID  
WEST CHESTER, PA  
PERMIT NO. 119

## HISTORY

THE BUCK & DOE TRUST WAS ESTABLISHED AT THE TIME OF THE KING RANCH PROJECT TO ENCOURAGE COMMUNITY COOPERATION AND SUPPORT OF THE CONSERVATION EASEMENT PROGRAM. THE TRUST SEEKS TO WELCOME NEWCOMERS AND OFFER OPPORTUNITIES FOR RESIDENTS, NEW AND OLD, TO GET TO KNOW ONE ANOTHER BETTER. THE BOARD MEMBERS HOST THE

**SPRING FLING IN THE LAURELS**

(A CHUCKWAGON BREAKFAST), AND OTHER ACTIVITIES WHICH FOCUS ON "COMMUNITY CONSERVATION".

**2021 ANNUAL DUES  
\$40 PER FAMILY**

*Payable to:* **BUCK & DOE TRUST**  
MAIL TO OUR ADDRESS  
OR USE OUR WEBSITE

[www.buckanddoetrust.org](http://www.buckanddoetrust.org)

## MISSION:

### THE BUCK AND DOE TRUST IS A NON-PROFIT ORGANIZATION

OF COMMUNITY MEMBERS WHOSE STATED MISSION IS SUPPORT OF LAND AND WATER RESOURCE CONSERVATION WITHIN THE BUCK AND DOE RUN WATERSHEDS. THESE WATERSHEDS INCLUDE, BUT ARE NOT LIMITED TO, THE TOWNSHIPS OF EAST FALLOWFIELD, WEST MARLBOROUGH, EAST MARLBOROUGH, HIGHLAND, LONDONDERRY, AND NEWLIN.

### THE TRUST INITIATIVES TO ACCOMPLISH THIS MISSION ARE:

**PROMOTE**, THROUGH MEMBER INVOLVEMENT AND EDUCATION, THE CREATION OF ADDITIONAL HIGH QUALITY CONSERVATION EASEMENTS WITHIN THE BUCK AND DOE WATERSHEDS.

**MONITOR** AND SUPPORT ACTIVE ENFORCEMENT BY EASEMENT GRANTEEES OF ALL EXISTING CONSERVATION EASEMENT REQUIREMENTS.

**PARTICIPATE**, INFLUENCE, AND MONITOR THE STEWARDSHIP OF THE LAURELS RESERVE BY THE ENVIRONMENTAL MANAGEMENT CENTER OF THE BRANDYWINE CONSERVANCY.

**INITIATE** AND ENCOURAGE ACTIVE AND TIMELY COMMUNICATION ON LAND AND WATER RESOURCE CONSERVATION ISSUES WITHIN THE BUCK AND DOE WATERSHEDS.

## BOARD MEMBERS

**Amy McKenna** – President  
**Richard Buchanan** – V. President  
**Nina Seder-Burnaford** – Secretary  
**John Goodall** – Treasurer

Terry Corkran  
Phoebe Driscoll  
Mamie Duff  
Keith Kanara  
Jamie O'Rourke  
Maria Pfeffer  
Janet Sidewater  
Susannah Small  
Barbara Stewart  
Lizzie Vannote  
Maggie Buchanan-Intern

