

# Astro Compatibility Report for

**Prince Charles**

and

**Diana Princess of Wales**



Data for Prince Charles:  
November 14, 1948 9:14 PM  
London, England  
51 N 30 0 W 10  
Standard time observed  
Time Zone: 0 hours West

Data for Diana Princess of Wales:  
July 1, 1961 7:45 PM  
Sandringham, England  
52 N 50 0 E 30  
Daylight Savings Time observed  
Time Zone: 0 hours West

Sun 22 deg 25 min Scorpio  
Moon 0 deg 26 min Taurus  
Mercury 6 deg 57 min Scorpio  
Venus 16 deg 23 min Libra  
Mars 20 deg 57 min Sagittarius  
Jupiter 29 deg 53 min Sagittarius  
Saturn 5 deg 16 min Virgo  
Uranus 29 deg 56 min Gemini  
Neptune 14 deg 08 min Libra  
Pluto 16 deg 34 min Leo

Sun 9 deg 40 min Cancer  
Moon 25 deg 02 min Aquarius  
Mercury 3 deg 12 min Cancer  
Venus 24 deg 24 min Taurus  
Mars 1 deg 39 min Virgo  
Jupiter 5 deg 06 min Aquarius  
Saturn 27 deg 49 min Capricorn  
Uranus 23 deg 20 min Leo  
Neptune 8 deg 38 min Scorpio  
Pluto 6 deg 03 min Virgo



House of Glamourgan  
Olympia, Washington USA  
[www.glamourgan.uk](http://www.glamourgan.uk)

*Prince Charles's Sun in Scorpio and Diana's Sun in Cancer:*

Both of you have strong, deep feelings and you bond very intensely. Consequently, you can become very attached to each other and cling tightly to each other. However, your emotional natures are different in many ways too. Diana often feels more compassion and sympathy for someone, while Prince Charles may view Diana's feelings as sentimentality. When wounded, Prince Charles becomes resentful and vindictive. Diana, on the other hand, cries or sulks, and usually lets the other person know (verbally or nonverbally) about it. Prince Charles, by contrast, hides it.



You have a rapport and understanding of one another that is instinctive and non-verbal, and you could be very tight friends. You both can be very possessive also.

*Prince Charles's Moon in Taurus and Diana's Moon in Aquarius:*

Both of you are stubborn and fixed in your ways and your spontaneous impulses and emotional requirements are frequently at odds with one another. Prince Charles wants serenity, tranquility, and stability in the personal and domestic sphere. Very much a creature of habit, Prince Charles does not adjust quickly to changes in routine. The old-fashioned, tried-and-true ways often suit Prince Charles just fine.



Diana, on the other hand, craves excitement, social life, and mental stimulation, and has a strong impulse to experiment with new ways of doing things. Diana is indifferent to custom and convention at best, downright rebellious toward authority and tradition at worst. Many of your disagreements revolve around the theme of maintaining the status quo (Prince Charles) versus change (Diana).

Furthermore, Diana is very ideological and often quite attached to opinions and beliefs that, in Prince Charles's eyes, defy common sense or the natural wisdom of the body and instincts. Prince Charles can help Diana become more attuned to nature, sensuality, or the feminine side of life, instead of living only in Ideas.

*Prince Charles's Sun Opposition Diana's Venus:*

You really enjoy each other's company and have a good time together. You share positive attitudes and feelings openly and you help each other see the brighter, more beautiful side of life.



*Prince Charles's Sun Square Diana's Moon:*

The distinct differences in your temperaments inclines you to periods of personality clashes and misunderstandings. In particular, Diana often feels that Prince Charles does not sympathize enough or try to really understand Diana's feelings. Both of you will have to understand and respect your differences, and make a concerted effort to harmonize your very different temperaments.



*Prince Charles's Sun Square Diana's Uranus:*

When the two of you get together, you make a lot of noise, and there is lots of excitement. There is a strong element of unpredictability and spontaneity as well and you enjoy improvising new ideas and playing together. Because there is a loose, spontaneous quality to your relationship, you find that very often you can not depend on each other and it is difficult for the two of you to focus on mundane, tedious, or onerous tasks together. This is a good relationship for exploring new possibilities and interests and for spurring each other to become more spontaneous, independent, and creative, but a difficult relationship if dependability and commitment to each other is a high priority.



*Diana's Sun Trine Prince Charles's Mercury:*

The mental rapport that you two share is a big reason why you enjoy each other's company and are good friends. Communication is open and harmonious. You work together very well on practical affairs, daily chores, problem-solving, and business activities.



*Prince Charles's Moon Square Diana's Saturn:*

This relationship is not an easy one! There is a sense of responsibility towards each other that may encourage you to work together on practical, mundane, or tedious tasks together. However, you both feel emotionally constrained and inhibited by being together, and this



relationship may feel like a form of imprisonment! Prince Charles, in particular, may feel disheartened by Diana's criticisms, worries, fears, or need to dominate Prince Charles's life. Prince Charles's emotional needs and feelings are ignored and neglected at times. Most likely there is too much emphasis on responsibilities and obligations. The serious tone of the relationship also stifles play and light-hearted fun-loving activities. This relationship may endure even when your feelings towards one another have cooled because there is a great deal of stability in it and reliability and responsibility to each other, even if there is little satisfaction over time.

*Prince Charles's Moon Trine Diana's Mars:*

Your relationship is dynamic and energetic. If both of you enjoy athletic sports or other physical activities, you will have a wonderful time sharing these interests. You work well as a team and you are able to coordinate your efforts in a very harmonious, successful way.



*Diana's Mercury Conjunct Prince Charles's Uranus:*

You inspire each other to develop original, creative ideas. Prince Charles, especially, awakens, enlivens, or radically changes Diana's ideas and perspective. There is a strong impulsive quality too, and together you tend to make decisions impulsively. This is fun and exciting when the decisions are relatively harmless (for example, deciding to go somewhere together), but care is needed before making more important decisions (for example, suddenly deciding to form a business partnership).



*Prince Charles's Mercury Conjunct Diana's Neptune:*

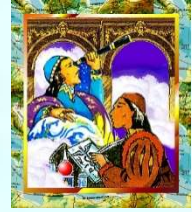
There is a poetic, fanciful quality to your conversations. Diana brings out the poet and dreamer in Prince Charles. Communications on practical matters, however, may suffer and you both need to be wary of exaggerating, hiding, or deceiving each other. When with Diana, Prince Charles is often confused, less clear and less precise than usual.



*Diana's Mercury Opposition Prince Charles's Jupiter:*

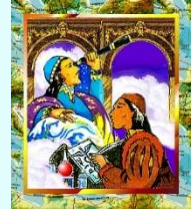


Issues of broad scope such as religion, philosophy, and politics play a major part in your relationship. You work well together in areas that involve long-distance communication, mass media, or philosophical issues. Prince Charles challenges Diana to take a broader, more inclusive view of any situation.



*Prince Charles's Mercury Square Diana's Jupiter:*

This relationship has a marked effect on the overall attitudes and beliefs of both of you, but particularly of Prince Charles. You challenge each other's religious, political, and philosophical beliefs. You may experience differences of opinion that are difficult to reconcile. You are also inclined to take risks together and speculate, sometimes foolishly.



*Prince Charles's Mercury Trine Diana's Mercury:*

You solve problems and think about issues with a similar perspective and you are able to communicate clearly to each other. You enjoy talking to each other, sharing ideas, and learning from each other, and you are able to plan, design, and develop ideas jointly in a very successful manner.

*Prince Charles's Mercury Sextile Diana's Pluto:*

Your conversations are deep and probing. You understand each other at a very deep level, and you may find yourselves revealing things about yourself that you have not mentioned to anyone else. You also make a good research team or investigators.



*Diana's Mars Conjunct Prince Charles's Saturn:*

The two of you are able to perform detailed tasks together, and really buckle down to a task at hand and successfully complete any task that you collaborate on. However, there may be too much caution and restraint when good opportunities arise and an unwillingness to take risks. Prince Charles is inclined to doubt Diana's ability to succeed in any kind of risky or speculative endeavor and consequently suggest a conservative approach to achieving goals. In some cases, this caution is unwarranted and very frustrating to Diana, but at other times Prince Charles provides a realistic, clear,



focused perspective on how Diana can achieve goals.

On another level, Prince Charles may suppress Diana's natural desires, drives, and physical energy level, which can leave Diana feeling drained and resentful. Beware of holding in anger and irritation with one another for it can slowly poison your relationship.

*Diana's Mars Trine Prince Charles's Jupiter:*

The two of you form an effective, dynamic team in any venture or endeavor. You work together very well in accomplishing daily tasks, and it is likely that you will also successfully coordinate efforts on joint efforts as well. Prince Charles provides the vision, the social contacts, and ideas, while Diana provides energy, decisive will, and enthusiasm.



*Prince Charles's Mars Trine Diana's Uranus:*

An electric, exciting quality infuses your relationship and you encourage one another to be bold, confident, and assertive. Vigorous physical activities, like sports, are good outlets for the vital dynamic energy you generate together. Your unusual, original, unconventional impulses emerge when you are together, also.

