



# EXTERIOR JAMB MOUNTED FIRE SHUTTER INSTALLATION INSTRUCTIONS

SHUTTER SIZES TO A MAXIMUM OF 42" WIDE AND 60" HIGH  
 SHUTTER TO BE MOUNTED TO BRICK JAMB OR EQUIVALENT NON-COMBUSTIBLE SURFACE

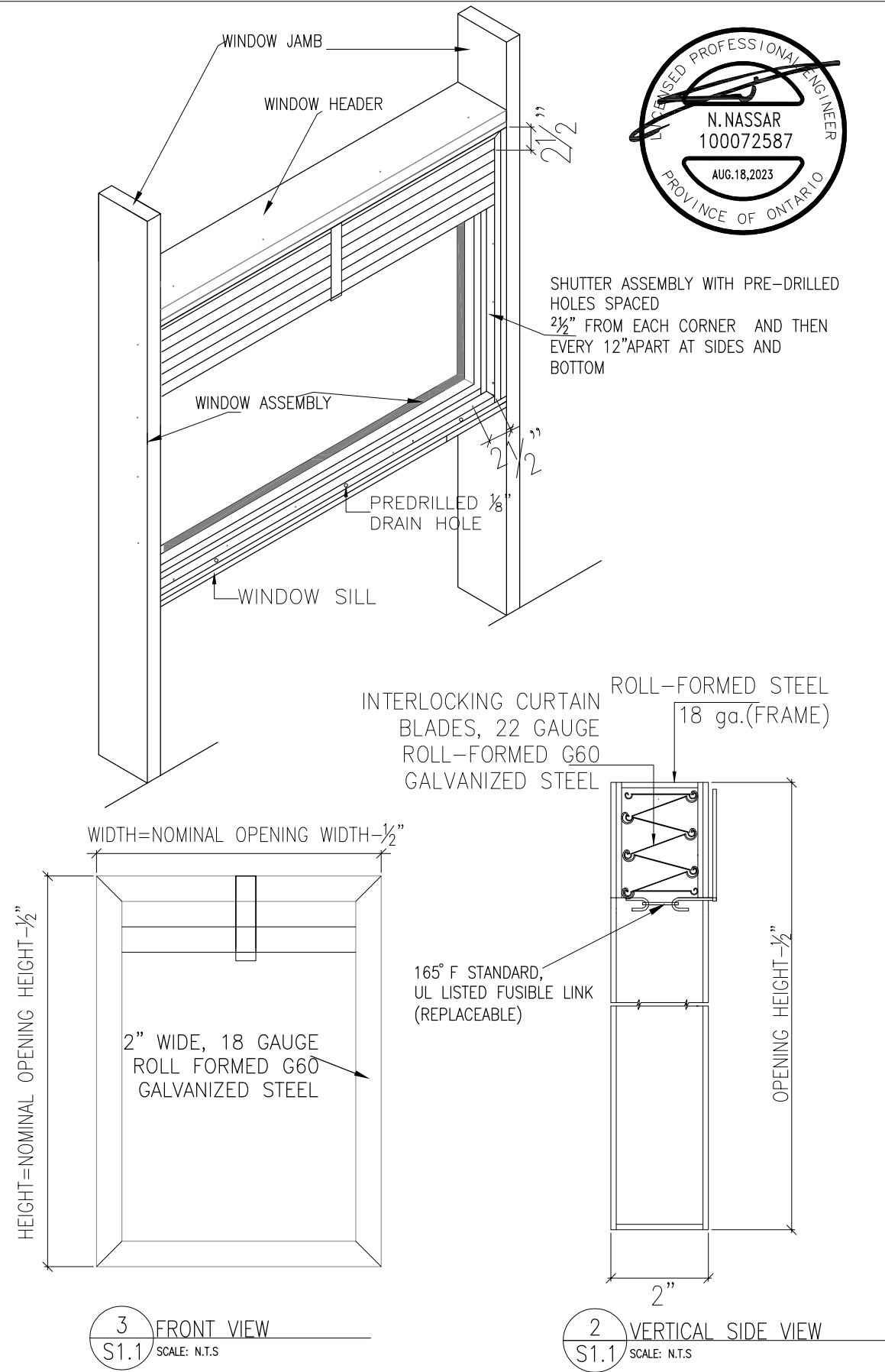
1. PREPARE AND CLEAN THE EXTERIOR SIDE OF THE WINDOW OPENING.
2. PLACE FIRE SHUTTER WITH CORNER BRACKETS FACING THE WINDOW INTO THE WINDOW OPENING WITH A 1/4" SPACE FROM THE FACE OF THE WINDOW.
3. SHIM THE SHUTTER ASSEMBLY WITH A MINIMUM 1/4" GAP TO WINDOW OPENING AT BOTTOM AND SIDES. SHIM WHERE PRE-DRILLED HOLES ARE LOCATED TO PREVENT BENDING OF FRAME.
4. LOCATE PRE-DRILLED HOLES AT SIDES AND BOTTOM AND INSERT SCREWS AS REQUIRED TO SECURE SHUTTER ASSEMBLY, (SEE TABLE 1 FOR THE REQUIRED SCREWS).
5. TO INSTALL SCREWS AT TOP CORNER, CAREFULLY REMOVE THE FUSIBLE LINK HOLDING STRAP WITH ONE HAND AND HOLD BOTTOM OF CURTAIN BLADE WITH THE OTHER HAND ALLOWING CURTAIN TO DROP. INSTALL SCREWS AND RESET CURTAIN TO UPRIGHT POSITION AND RE-SET FUSIBLE LINK HOLDING STRAP.

## USE CAUTION WHEN LOWERING CURTAIN BLADE

6. REMOVE ALL SHIMS AND TIGHTLY FILL GAPS WITH RATED MINERAL WOOL AND APPLY A GOOD QUALITY CAULKING, FILLING ALL GAPS BETWEEN THE FIRE SHUTTER AND MOUNTING SURFACE.
7. TEST DROP CURTAIN TO ENSURE IT WILL FREE FALL WITHOUT OBSTRUCTION.
8. RESET CURTAIN IN UPRIGHT POSITION AND SECURE WITH FUSIBLE LINK STRAPING.

## NOTES:

- 1- INSTALL IN ACCORDANCE WITH INSTRUCTIONS TO MAINTAIN APPROVED LISTING .
- 2- IF OTHER TYPES OF INSTALLATION IS REQUIRED, PLEASE CONSULT WITH P.ENG, LOCAL FIRE DEPARTMENT AND OR BUILDING DEPARTMENT .



## FIREOXX SHUTTER

WARNOCK HERSEY LISTED 45 MINUTE RATED FIRE SHUTTER MEETS CAN/ULC S104:2015(R2020)

TABLE 1

OPENING MATERIAL	SCREW TYPE	SCREW HEAD TYPE	MIN. PENETRATION
CONCRETE	#8 DX-KWIK OR EQUIVALENT	FLAT HEAD	1 1/2"
LIGHT GAUGE STEEL	#8 KWIK-PRO SELF DRILLING OR EQUIVALENT	FLAT HEAD	1/2"
MASONRY	#8 DX-KWIK OR EQUIVALENT	FLAT HEAD	1 1/2"
STEEL	#8 KWIK-PRO SELF DRILLING OR EQUIVALENT	FLAT HEAD	1/2"
WOOD	#8 ROBERTSON SCREW OR EQUIVALENT	FLAT HEAD	1 1/2"