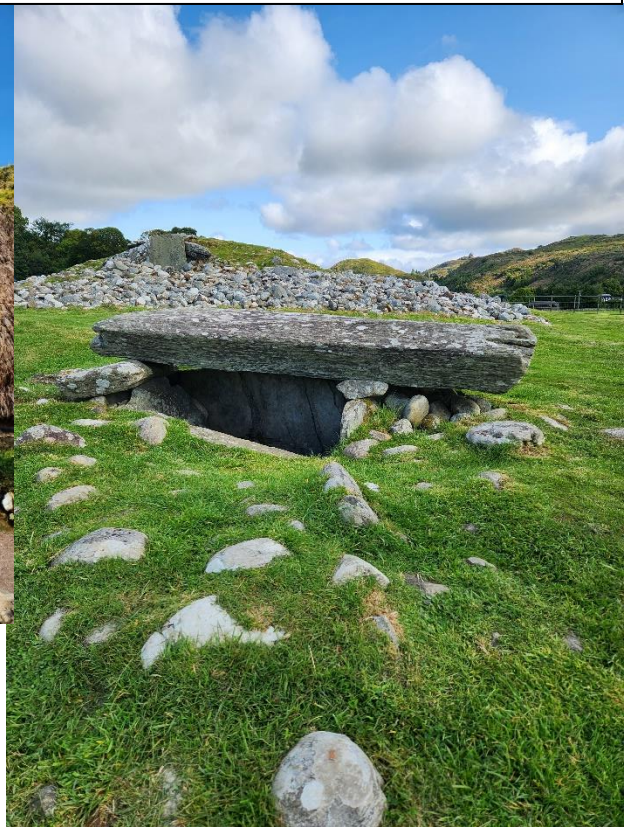


# Ancient Scotland, Iona & Gigha

October 14<sup>th</sup> – 23<sup>rd</sup>, 2024

Embark on an intriguing 10-day journey away from the typical tourist routes. We will depart from Glasgow with our adventure taking us through the awe-inspiring landscapes of Glencoe and onward to the Isle of Mull. We will enjoy a day excursion to the quaint Isle of Iona, renowned as the birthplace of Christianity in Scotland and the resting place of Scottish, Irish, and Norwegian Kings. After returning to the mainland, we will settle into a loch side castle hotel for three nights. We will spend our days exploring some of Scotland's most notable Neolithic and Bronze Age sites, historic castles, pristine beaches, sample spirits at a local distillery, and enjoy a day trip to the Isle of Gigha. Our itinerary also includes a visit to the last Highland farm township, and exploring Iron Age life at the Scottish Crannog Centre before we conclude our journey in Inverness.



To reserve your spot on this tour, register on our website or email: [Tawnya@anchorfullservicetravel.com](mailto:Tawnya@anchorfullservicetravel.com) to have a booking form sent to you.

**\$3450 per person land only**

Price is based on double occupancy (2 people sharing a room), is subject to change and availability until booked and confirmed. Limited single rooms available at additional cost of \$575

Nonrefundable deposit of \$500 is due at time of booking with balance due August 14<sup>th</sup>. Travel insurance is available at additional cost and is highly recommended.

*Presented by:*  
**Anchor Travel**  
Cambridge, MN  
763-691-1416

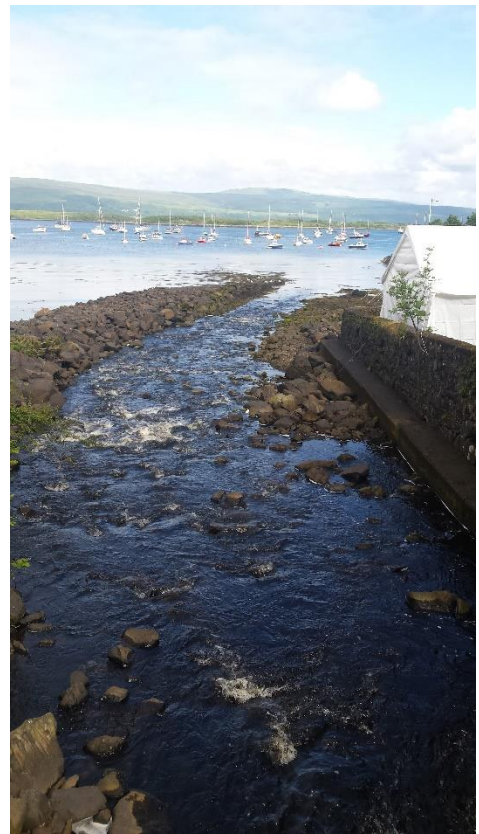
[www.anchorfullservicetravel.com](http://www.anchorfullservicetravel.com)  
[Tawnya@anchorfullservicetravel.com](mailto:Tawnya@anchorfullservicetravel.com)

## Highlights

- Mid-size group, 20 people maximum.
- Glasgow hop on hop off tour.
- Glencoe
- Visits to Isle of Iona and Isle of Gigha
- Kimartin Museum
- Neolithic and Bronze Age sites
- Auchindrain Highland Farm Village
- The Scottish Crannog Centre

## Your Tour Includes

- All land tour transportation
- 8 nights of lodging
- Breakfast Daily (except day of arrival)
- 3 dinners
- Sightseeing admissions as indicated on daily itinerary.
- Scottish Tour Guide
- Agency Tour Manager



This itinerary is subject to change due to weather, site availability, traffic, or other unexpected delays. Adjustments, if necessary, will be made accordingly by your group leader with the best interest of entire group in mind. While we do our best to accommodate all, this tour does involve walking over uneven surfaces, climbing stairs, some inclines, and hills. Streets and alleyways are uneven and often made of cobblestone. Many visitor sites require the ability to go up and down stairs. Participants should be able to leisurely walk for up to 30 minutes at a time. Some of the lodging properties used during this tour incorporate old, historic buildings and do not offer elevators (lifts). Luggage must be hand carried up to your room, portorage of bags is not included. **If you have mobility difficulty or dietary needs, please advise agent at time of booking for further discussion.**

**What's included:** 8 nights lodging, tour transportation by motorcoach and ferry, breakfast daily (except day of arrival), 3 dinners, service of professional agency tour manager, local historian, and guide while in Scotland, entrances as indicated on itinerary. **What's NOT included:** daily lunch, 5 dinners, items of personal nature (shopping, snacks, drinks during meals), additional site visits or evening activities you chose to partake in and gratuities to local guides/drivers.

We aim to ensure that everyone on the tour has an equal opportunity to enjoy their experience. While you may not be particularly excited about the next stop on the itinerary, it could be the highlight for someone else. We kindly request that all participants show respect for the time and investment of the entire group. Please be prepared for morning departures, promptly returning to the coach, and loading and unloading efficiently. Consistent tardiness, disruptive behavior, or rudeness will not be tolerated, nor will delays caused by overindulgence (such as a hangover). Organizers reserve the right to remove any individual from the tour without refund.

## Planned Day by Day itinerary.

This itinerary could be influenced by weather and sea conditions. Tour staff will adjust as needed with the best interest of the tour group in mind.

**October 14<sup>th</sup>** - Departure from your home airport

**October 15<sup>th</sup>** – Arrival in Glasgow. Check into your hotel and the remainder of the day is free and at leisure to enjoy a hop on hop off city tour. *Voco Grand Glasgow*

**October 16<sup>th</sup>** – We depart Glasgow this morning with our guide, Hugh, and driver Mark. We head north into the beauty of the Highlands. We will make a few stops for photos before we explore the Glencoe Visitor Centre. We will then continue our day with the first ferry crossing of our trip and out to the Isle of Mull where we will check into our hotel in Tobermory. *The Tobermory Hotel (B)*



**October 17<sup>th</sup>** – Today we make the journey to Iona. We will travel via road and ferry. Getting to Iona is part of the experience as the scenery is simply stunning. There will be enough time on Iona to explore the Nunnery and Abbey as well as wander the village before we repeat the journey back to our hotel in Tobermory. *The Tobermory Hotel (B)*

**October 18<sup>th</sup>** – Departing Mull by ferry we return to the mainland at Oban and then south into the Kilmartin Glen area. The glen has the important concentration of Neolithic and Bronze Age sites in Scotland. We will visit the Kilmartin Museum to learn more about the ancient sites and the people who lived here. Our day ends at Stonefield Castle, our home for the next 3 days. We will enjoy dinner together in the hotel restaurant overlooking Loch Fyne.



*Stonefield Castle Hotel (B, D)*

**October 19<sup>th</sup>** – We will take a day trip from our castle hotel to explore the local area with visit to the remains of Saddell Abbey. We will also tour a distillery to learn more about the national drink of Scotland, whisky. *Stonefield Castle Hotel (B, D)*

**October 20<sup>th</sup>** – Today we will visit the quaint, community-owned Isle of Gigha. Just seven miles long and a mile and a half wide we will spend most of our day exploring the sandy beach and stunning landscapes. *Stonefield Castle Hotel (B, D)*

**October 21<sup>st</sup>** – Our first stop today will be at the Auchindrain Highland Farm Township to explore life in a traditional farming community. We continue to The Scottish Crannog Centre to go a bit further back in time discover Iron Age living. Our day ends at Pitlochry where we shift to a train to travel north to Inverness. *The Royal Highland Hotel Inverness (B)*

**October 22<sup>nd</sup>** – free time in Inverness  
*The Royal Highland Hotel Inverness (B)*

**October 23<sup>rd</sup>** – flights home from Inverness

# Tour Registration

## Ancient Scotland Iona & Gigha

October 14<sup>th</sup> – 23<sup>rd</sup>, 2024

Please email to [Tawnya@anchorfullservicetravel.com](mailto:Tawnya@anchorfullservicetravel.com)

or mail to Anchor Travel 31524 Tucker St. NE. Cambridge, MN 55008

*Please register me for:*

- Double occupancy • \$3450 per person
- Single • \$3450 + \$575 single supplement

### Passenger Information (1<sup>st</sup> Traveler)

Please record information exactly as it appears on your passport. Passport information may be sent later if you have yet to obtain a passport.

Legal full name: \_\_\_\_\_

Name for name badge: \_\_\_\_\_

Passport #: \_\_\_\_\_

Passport expiration date: \_\_\_\_\_

Passport Authority: \_\_\_\_\_

Date of Birth: \_\_\_\_\_

Precheck or Global Entry #: \_\_\_\_\_

Dietary or Mobility Needs: \_\_\_\_\_

### Passenger Information (2<sup>nd</sup> Traveler)

Please record information exactly as it appears on your passport. Passport information may be sent later if you have yet to obtain a passport.

Legal full name: \_\_\_\_\_

Name for name badge: \_\_\_\_\_

Passport #: \_\_\_\_\_

Passport expiration date: \_\_\_\_\_

Passport Authority: \_\_\_\_\_

Date of Birth: \_\_\_\_\_

Precheck or Global Entry #: \_\_\_\_\_

Dietary or Mobility Needs: \_\_\_\_\_

Address: \_\_\_\_\_

City: \_\_\_\_\_ State: \_\_\_\_\_ Zip: \_\_\_\_\_

Phone: \_\_\_\_\_ E-mail: \_\_\_\_\_

Emergency Contact: (Name & Relationship) \_\_\_\_\_ (Phone) \_\_\_\_\_

Sleeping Preference (circle one): Double (one bed in room) OR Twin (two beds in room)

Roommate Name: \_\_\_\_\_ OR Single Supplement: \_\_\_Yes \_\_\_No

**Travel Insurance** As part of our travel service, we recommend that all travelers purchase travel insurance. Travel insurance may help with reimbursement for cancellation or change penalties (which can be 100% of your investment) in the event of an unforeseeable illness, injury, or death, of you, your travel companion or a family member. In addition, some policies include coverage if you are called for jury duty, your home is damaged due to fire or natural disaster, military leave is cancelled, missed connection during travel, emergency evacuation, during travel medical coverage, 24 hour emergency assistance for trip delays, medical, lost travel documents and more. For a full understanding of benefits, you can request the Description of Coverage.

\_\_\_\_\_ I do want travel insurance coverage and have requested a policy quote from my agent.

\_\_\_\_\_ I do NOT want travel insurance and acknowledge that I have been offered, but choose to decline, this coverage. My travel arrangements are subject to non-refundable cancellation and change fees and penalties. A digital waiver will be sent via email to decline coverage

### Deposit Payment Information (please check one)

- Enclosed is my \$500 per person tour deposit plus insurance premium (if applicable).
- I would like to charge my \$500 per person tour deposit and insurance premium (if applicable) to my credit card. A secure payment link will be sent to you via email to collect your card details.

\_\_\_\_\_ Initial to acknowledge that you understand that Federal law prohibits the carriage of certain hazardous materials in your luggage or on your person aboard aircraft and could result in a fine or imprisonment. Visit [www.tsa.gov](http://www.tsa.gov) for more information.

Prices in this brochure were effective on 4.15.24. By signing below, I understand that the price of this tour can change due to fluctuations in exchange rate, taxes, tariffs, or number of passengers traveling in the group. Any increase will be advised and added at time of final payment. I have read the full tour itinerary, advisements and agree to the terms and conditions of this tour.

Signature of 1<sup>st</sup> traveler: \_\_\_\_\_ Date: \_\_\_\_\_

Signature of 2<sup>nd</sup> traveler: \_\_\_\_\_ Date: \_\_\_\_\_