

DeWeese-Dye Ditch & Reservoir Company

2025 Year in Review

PREPARED BY: ANNETTE REED-PUGH



Board Members & Staff

ARLIN BOLKEMA, PRESIDENT
KENN ESTES, VICE PRESIDENT
MARC THOMPSON, DIRECTOR
LEO FRENCH, DIRECTOR
BILL BROGOITTI, DIRECTOR
ANNETTE REED-PUGH, SECRETARY/TREASURER

Completed Projects

- ✚ 2/17/2025: Hanging pipe 320' 36" corrugated metal pipe – Avalanche Construction
- ✚ 2/27/2025: 60' 36" pipe below new irrigation box at South Canon Ranch
- ✚ 2/27/2025: 120' 48" pipe above new irrigation box at South Canon Ranch
- ✚ 10/9/2025: 246' 36" pipe downstream from the Double Barrel siphon at South Canon Ranch
- ✚ 10/14/2025: 90' 36" corrugated pipe at the Double Barrel – Avalanche Construction

Major Purchases

RJH Dam outlet repair (grant match & cost increase)	Task 1 of 3	\$73,200.00
Scata Gate (Hydrologik)	Equipment-Gate Auto	\$49,201.97
Automated Valve Openers	Equipment-diversion	\$66,669.39
Vehicle	2022 Dodge Ram	\$19,492.45
Avalanche (Cedar Avenue work)	Partial pay	\$28,520.00
Avalanche (2nd St Pipe)	2nd Street	\$ 9,100.00
Avalanche (cattails)	Cattails	\$10,944.00
Dump Trailer	Trailer	\$10,692.84
Snake	Snake	\$ 1,029.58
Generator	Generator	\$ 1,413.09
Hitch for equipment trailer	Hitch	\$ 442.91
Skyline Steel	Pipe	\$22,794.50
Skyline Steel (pipe stock)	Pipe Stock	\$22,200.00
Additional gaging stations Sandtrap outlet	Telemetry system	\$10,795.00

Dam Inspection

Inspection conducted on 07/10/2025 by Mark Perry, Marc Thompson, and President Bolkema

Minor spalls where aggregate has popped out of dam crest concrete; recommend patching with epoxy grout per manufacturer's recommendations. Recommendation to cut back brush and maintain brush 15-20 ft back from the dam, mainly along the dam's left (south) abutment. We will continue to monitor the Dam and do internal inspections 2 times per month.

Overall good inspection: EAP will be updated in 2025.

Movement survey of the Dam completed on 1/03/2024.

Movement survey is required every five years. Monuments were found to be intact and undisturbed.

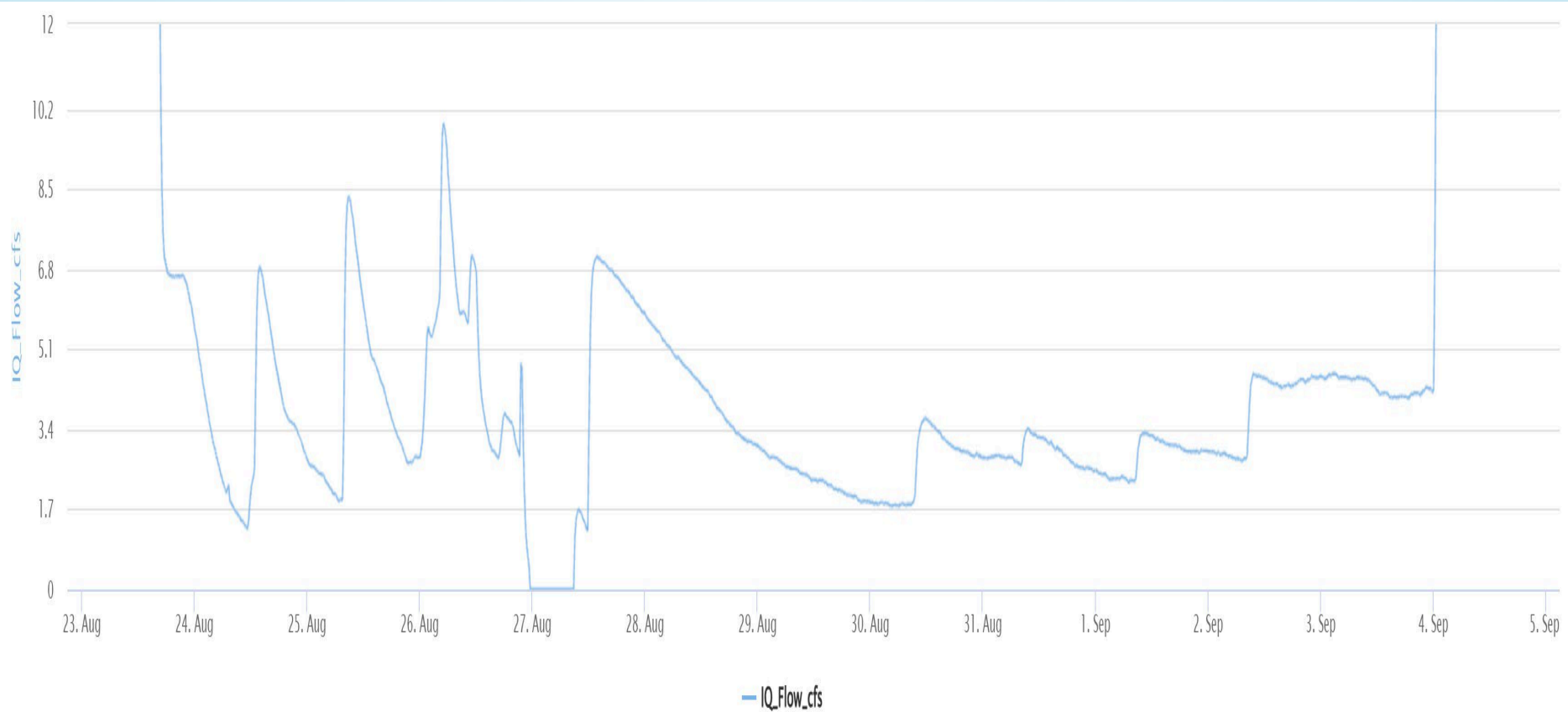
Annual Dam Inspection 7/10/2025







Water Fluctuations Chart



GRANT FUNDING WORK TO BE COMPLETED IN THE NEAR FUTURE

- DEWEESE APPLIED FOR AND WAS AWARDED A GRANT FOR \$314,224.00 TO SUPPORT PHASE 1 WHICH WILL REPAIR THE DAM OUTLET. THE RESERVOIR AND CREEK PROVIDE RECREATION AND CRITICAL HABITAT FOR FISH AND WILDLIFE AT THE RESERVOIR AND ALONG 27 MILES OF THE STREAM ON PRIVATE AND PUBLIC LANDS. THE PROJECT WILL PROTECT STORAGE AGREEMENTS WITH THE GRANTEE'S PROJECT PARTNERS.
- WORK TO REPAIR THE OUTLET PIPE WILL BE UPDATED WITH REVISED COSTS AND WILL BEGIN AS SOON AS WE ARE ABLE TO COORDINATE WITH THE CONTRACTOR AND OUR IRRIGATION SEASON. WE ARE WORKING TOWARD OBTAINING REVISED COSTS FROM THE INITIAL GRANT APPLICATION.
- WE RECEIVED \$3,000.00 FROM THE NRCS IN GRANT MONIES FOR THE PURCHASE OF PIPE, AND WILL BE SUBMITTING MORE GRANT APPLICATIONS FOR VARIOUS PROJECTS ALONG THE WATER DELIVERY SYSTEM, AND IN CONJUNCTION WITH OTHER ENTITIES WHO HAVE STORAGE SPACE IN THE DAM.

STORAGE SPACE AGREEMENT WITH UAWCD

- DEWEESE DYE DITCH AND THE UPPER ARKANSAS WATER CONSERVANCY DISTRICT HAVE BEEN IN YEARS-LONG NEGOTIATIONS ON STORAGE SPACE IN THE DAM. AFTER YEARS OF THOUGHTFUL CONSIDERATION, THOROUGH REVIEW BY THE BOARD OF DIRECTORS OF DEWEESE DYE DITCH, BOARD OF DIRECTORS OF UPPER ARKANSAS WATER CONSERVANCY DISTRICT, THOROUGH AND MEANINGFUL REVIEW BY ATTORNEYS FOR BOTH ENTITIES, COUNTLESS MEETINGS AND DEBATE, AND WEIGHING THE PRO'S AND CON'S, WE CAME TO AN AGREEMENT TO SELL 150AF OF STORAGE SPACE TO UAWCD IN THE AMOUNT OF \$1,425,000.00. DOING SO HAS ENABLED NOT ONLY THE CONSERVATION OF OUR WATER RESOURCE, SHARED BENEFITS WITH THE BLM, CPW, ROUND MOUNTAIN, AND UAWCD, BUT HAS AFFORDED DEWEESE THE OPPORTUNITY TO REPAIR OUR OUTLET PIPE SOONER, PROVIDE AN ACCESS ROAD TO THE OUTLET PIPE, ENABLED THE COSTLY AND CRITICAL REPAIRS OF SEVERAL LARGE LEAKS ALONG THE DELIVERY SYSTEM, PROVIDED THE ABILITY TO BRING TECHNOLOGY INTO OUR AGING SYSTEM-MAKING OUR PRODUCTIVITY AND OPERATIONS LESS TIME CONSUMING AND MORE ACCURATE ACCOUNTING OF OUR WATER, ALLOWING US TO BETTER CONSERVE OUR WATER WHILE STILL MEETING THE NEEDS OF OUR SHAREHOLDERS, PROVIDED MUCH NEEDED EQUIPMENT TO CONDUCT OUR WATER DELIVERY OPERATIONS, AND HAS PROVIDED AN INVESTMENT REVENUE STREAM TO ENSURE THE VIABILITY OF OUR WATER AND DELIVERY SYSTEM. REMAINING MONIES AFTER VARIOUS CAPITAL PROJECTS WERE COMPLETED AND EQUIPMENT PURCHASED, HAS BEEN PUT INTO LOW RISK INVESTMENTS FOR LONG TERM GAINS.

36" OUTLET PIPE REPAIR

• (SAME SCOPE OF WORK FROM INITIAL APPLICATION OF GRANT FUNDING)

- REPAIR OR REPLACEMENT OF THE DAM OUTLET WILL ALLOW THE RESERVOIR TO RELEASE AND PRECISELY MEASURE FLOW RATES FROM HIGH FLOW TO LOW FLOWS, WHICH IS ESSENTIAL FOR EFFICIENT OPERATIONS AND MANAGING DOWNSTREAM HABITAT. BLM HAS A LONG-TERM AGREEMENT FOR STORAGE SPACE IN THE DEWEESE RESERVOIR AND WORKS CLOSELY WITH DEWEESE TO RELEASE FLOWS DURING WINTER TO MAINTAIN FLOWS IN GRAPE CREEK. THIS TASK WILL ALLOW THE RESERVOIR TO CONTINUE WINTER FLOW RELEASES, EVEN DURING ICING CONDITIONS. FURTHERMORE, THE STATE IS ENCOURAGING THE REPAIR OF OUTLET PIPES (REFER TO THE LETTER FROM MARK PERRY DATED JANUARY 10, 2024).

DAM ENLARGEMENT STUDIES:

GRAPE CREEK/DEWEESE EFFICIENCY STUDY & ENLARGEMENT FEASIBILITY STUDY

- UPPER ARKANSAS WATER CONSERVANCY DISTRICT WILL BE APPLYING FOR VARIOUS GRANT FUNDING TO CONDUCT THE REMAINING STUDIES FOR FUTURE POSSIBLE ENLARGEMENT, AND VARIOUS IMPROVEMENTS TO THE GAGING AND TELEMETRY SYSTEMS:
- THE DEWEESE IRRIGATION SYSTEM EFFICIENCY AND IMPROVEMENT STUDY WAS CONDUCTED IN COOPERATION BY THE UPPER ARKANSAS WATER CONSERVANCY DISTRICT, THE DEWEESE-DYE DITCH AND RESERVOIR COMPANY (DDDR), AND THE BUREAU OF LAND MANAGEMENT. THE STUDY WAS UNDERTAKEN IN ORDER TO UPGRADE IRRIGATION EFFICIENCIES WITHIN THE DDDR SYSTEM, WHICH INCLUDES DEWEESE RESERVOIR, ENHANCE THE STREAM HEALTH OF GRAPE CREEK, REDUCE LOSSES IN THE MANAGEMENT OF WATER REPLACEMENT DELIVERIES, AND IMPROVE EXCHANGE OPPORTUNITIES. BENEFITS TO THE GENERAL PUBLIC INCLUDE A REDUCTION IN BOTH WATER LOSS AND WATER FLUCTUATION ALONG GRAPE CREEK, THEREBY IMPROVING NOT ONLY THE ENVIRONMENT, BUT RECREATIONAL OPPORTUNITIES AS WELL. THE GRAPE CREEK/DEWEESE EFFICIENCY STUDY IS A GREAT EXAMPLE OF A DIVERSE GROUP COLLABORATING TOGETHER FOR THE BENEFIT OF MULTIPLE USERS.

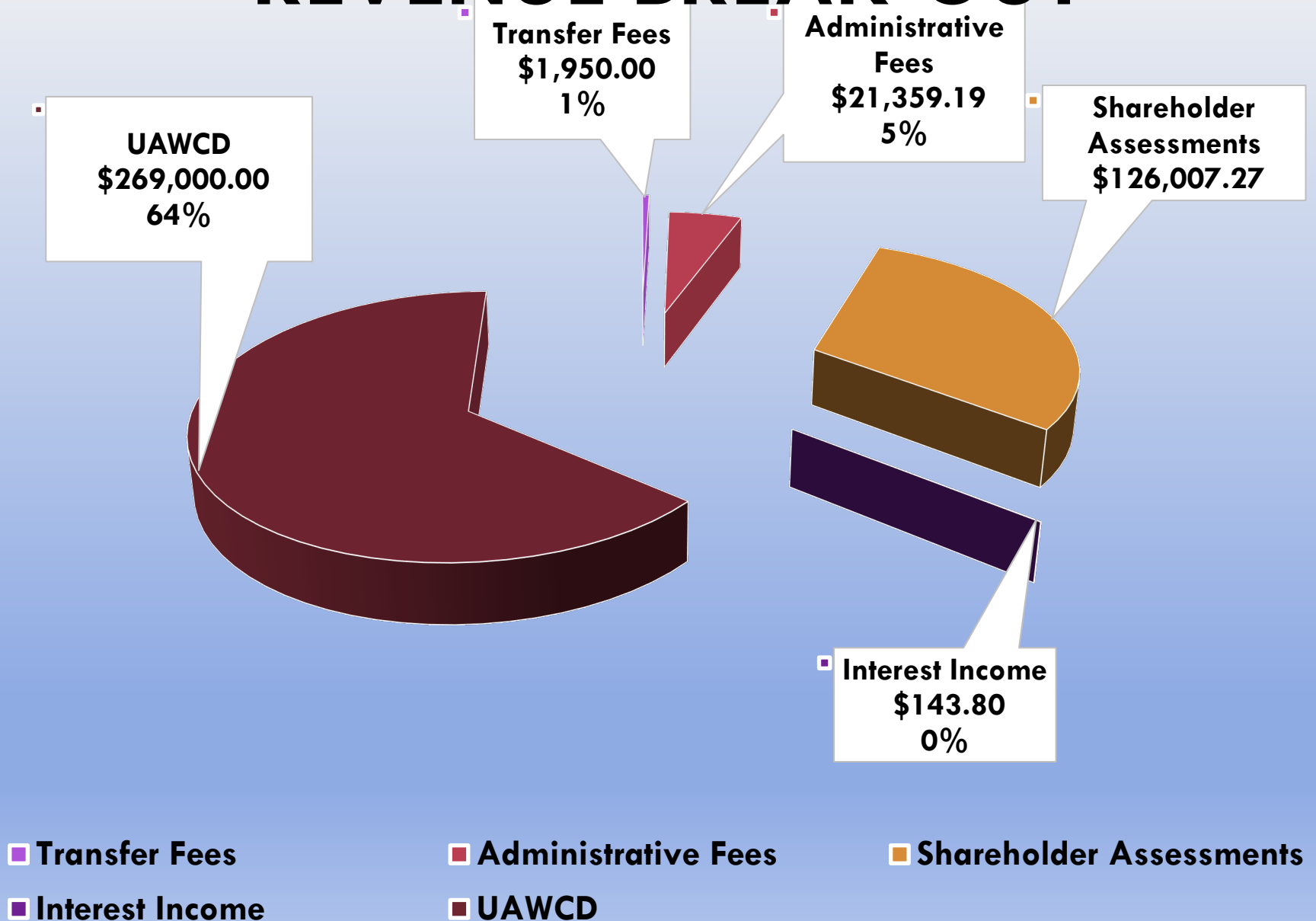
2025 PROFIT & LOSS

Profit & Loss Statement	
Company Name: DeWeese Dye Ditch & Reservoir Company	
Report End Date: 12/31/2025	
Title	Amount
Income	
Income for Operations & Mainten	\$0.00
Shareholder Assessments	\$126,007.27
Administrative Income	\$21,399.19
Convenience Fee	\$0.00
Transfer Fees	\$1,950.00
Dam Fees	\$0.00
Other Income	\$60,000.00
Interest Income	\$54.80
Returned Check Charges	\$0.00
Dividend Income	\$89.00
Gain on Disposal of Assets	\$0.00
Unrealized Income/Loss	\$0.00
Uncategorized Income	\$209,000.00
BLM Project Water	\$0.00
LUAWCD Storage Space Purchase	\$0.00
Total Income	\$418,460.26
Expenses	
Payroll Expense	\$79,702.05
Payroll Expenses-Employee	\$150.82
Operations and Maintenance Expe	\$0.00
Operations and Maintenance Expe: Contract Labor	\$3,585.00
Operations and Maintenance Expe: Equipment Rental	\$3,400.00
Operations and Maintenance Expe: Fuel	\$2,889.32
Operations and Maintenance Expe: Pipe Expense	\$110,686.57
Operations and Maintenance Expe: Small Tools	\$413.06
Operations and Maintenance Expe: Supplies	\$104.00
Operations and Maintenance Expe: Waste Disposal	\$0.00
Operations and Maintenance Expe: Water Expense	\$3,942.00
Operations and Maintenance Expe: Telemetry System Exp	\$0.00
Operations and Maintenance Expe: Repairs and Maintenance	\$42,829.12
Operations and Maintenance Expe: Vehicle Allowance Expense	\$1,300.00
Operations and Maintenance Expe: Vehicle Repairs & Maintenance	\$606.54
Operations and Maintenance Expe: Payroll Hourly/Seasonal	\$0.00
Insurance	\$0.00
Insurance: Insurance Expense	\$7,533.00
Insurance: Bonds	\$100.00
Insurance: General Liability Insurance	\$0.00
Insurance: Workers Compensation	\$2,029.00
Administrative Expense	\$0.00
Administrative Expense: Advertizing	\$208.60
Administrative Expense: Bank Service Charge	\$50.00
Administrative Expense: Bank Service Charge: Bank Service Charge Exp	\$95.75
Administrative Expense: Computer and Internet Expenses	\$773.71
Administrative Expense: Dues and Subscriptions	\$3,821.51
Administrative Expense: Merchant Fees	\$372.41
Administrative Expense: Office Supplies	\$1,723.24
Administrative Expense: Postage and Delivery	\$2,174.00
Administrative Expense: Printing and Reproduction	\$231.75
Administrative Expense: Travel Expense	\$0.00
Administrative Expense: Interest Expense	\$0.00
Administrative Expense: Payroll Fees	\$196.36
Administrative Expense: Licensing/Registration	\$138.64
Other Expense	\$0.00
Other Expense: Director Expense	\$1,440.00
Other Expense: Expense Reimbursement	\$309.00
Other Expense: Federal Taxes	\$6,763.76
Other Expense: Meals	\$0.00
Other Expense: Mileage Expense	\$0.00
Other Expense: Miscellaneous Expense	\$675.00
Other Expense: Professional Fees	\$80,891.50
Other Expense: Rent Expense	\$750.00
Other Expense: State Taxes	\$1,634.83
Other Expense: Telephone Expense	\$779.98
Depreciation	\$7,476.00
Uncategorized	\$0.00
Total Expenses	\$369,778.52
Net Profit	\$48,681.74

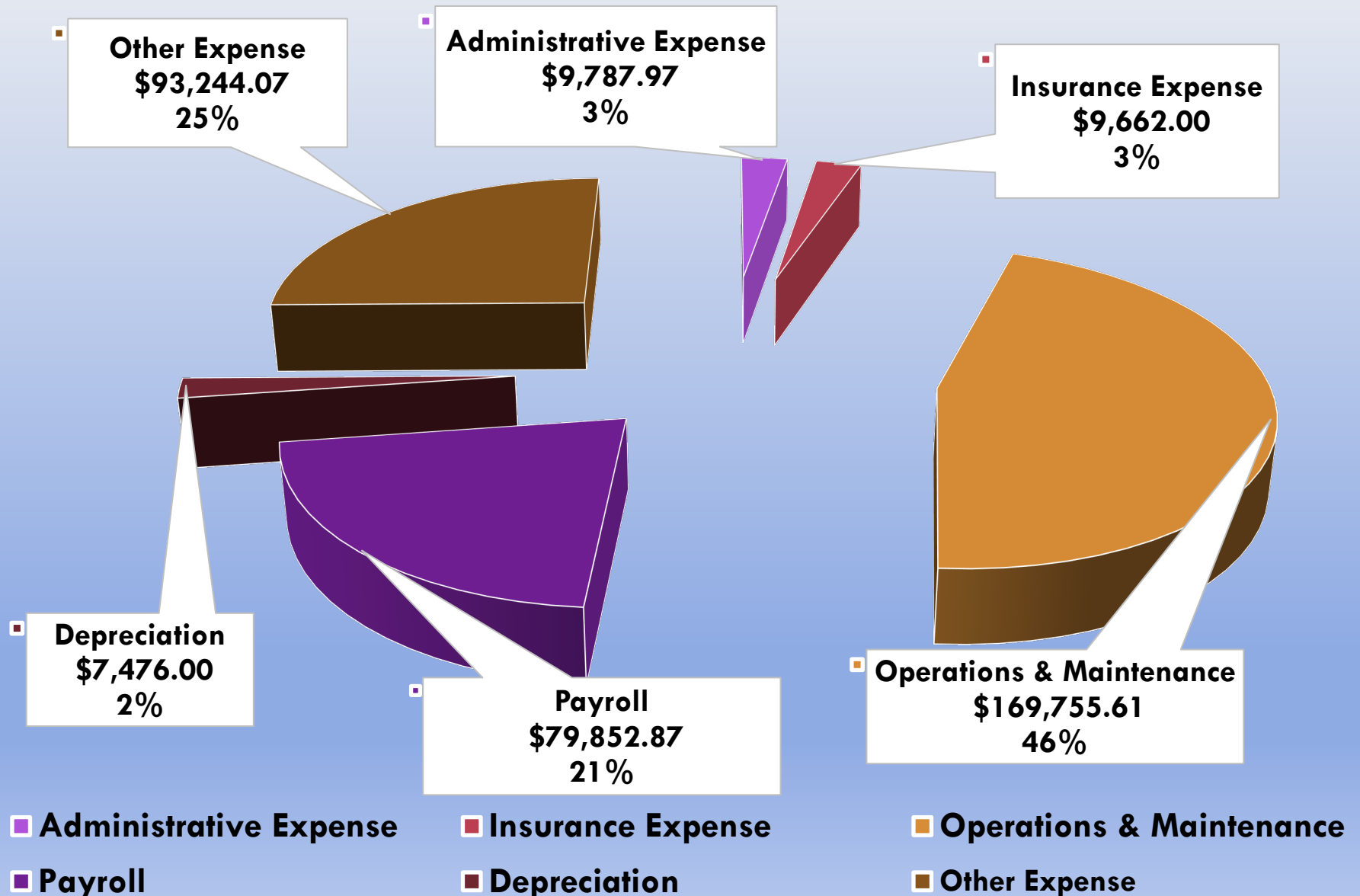
2025 BALANCE SHEET

Company Name: DeWeese Dye Ditch & Reservoir Company		
Balance As Of: 12/31/2025		
Asset Account	Balance	
Inbank Checking 8284	\$2,132.87	
BLM Cash Bond	\$8,400.00	
Payroll Tax Clearing	(\$84.62)	
Direct Deposit Clearing	\$0.00	
Accounts Receivable	(\$790.13)	
Undeposited Receivables	\$923.95	
Inventory Asset	\$0.00	
Fixed Assets	\$0.00	
Fixed Assets: Dam	\$393,954.75	
Fixed Assets: Pipe	\$284,000.65	
Fixed Assets: Tunnel	\$37,159.00	
Fixed Assets: Bridges	\$6,688.52	
Fixed Assets: Spillway	\$35,174.00	
Fixed Assets: Equipment	\$43,138.57	
Fixed Assets: Office Equipment	\$1,541.17	
Fixed Assets: Telemetry System	\$15,413.25	
Fixed Assets: Ditch & Improvements	\$947,380.08	
Fixed Assets: Accumulated Depreciation	(\$1,574,353.14)	
Total Assets	\$200,678.92	
Liability Account	Balance	
Accounts Payable	\$0.00	
Sales Tax Collected	\$0.00	
Credit Memo Liability	\$0.00	
Non-Remitted Tax Liability	\$0.00	
Payroll Tax Liability	\$6,351.95	
Payroll Liabilities	\$0.00	
Total Liabilities	\$6,351.95	
Equity Account	Balance	
Opening Bal Equity	\$5,247.10	
Owners Equity	\$0.00	
Common Stock	\$271,641.00	
Retained Earnings	(\$131,242.87)	
Net Income	\$48,681.74	
Total Equity	\$194,326.97	
Assets	\$200,678.92 =	Liabilities and Equity
		\$200,678.92

REVENUE BREAK-OUT



EXPENSE BREAK-OUT



**DeWeese-Dye Ditch and Reservoir Company
Fiscal Year 2026 Budget**

CARRYOVER FROM 2025

Checking Account	2,132.87	
Investments	1,174,968.80	
Total Carryover from 2025		1,177,101.77

INCOME-ADMINISTRATIVE

Admin. Income, Other (\$50 charge per 720 Shareholders)	21,600.00	
Transfer Fees	2,000.00	
Convenience Fees	1,000.00	
Total Estimated Administrative Income		24,600.00

INCOME-FOR OPERATIONS & MAINTENANCE

Shareholder Assessments (8500 active shares)	110,500.00	
DLM Reimbursement (for Project Water-300 af)	4,000.00	
Total Estimated Income for Operations & Maint.		114,500.00

DOW Lease Income	12,000.00	
1811 Cedar Lease	1,000.00	
Total Estimated Other Income		13,000.00

TOTAL ESTIMATED FUNDS AVAILABLE FOR 2026

\$1,329,201.77

EXPENSE - ADMINISTRATIVE

Advertising (Notices)	220.00	
Bank Service Charges	105.00	
Merchant Fees (credit card processing)	1,000.00	
Computer & Internet	2,820.00	
Books & Subscriptions	800.00	
Office Supplies	700.00	
Payroll, President	1,200.00	
Payroll, Secy/Treas	15,000.00	
Postage and Delivery	1,500.00	
Printing and Reproduction	500.00	
Rent (Brookside Community Center)	500.00	
Total Administrative Expense		24,445.00

EXPENSE-FOR MAINTENANCE & OPERATIONS

Equipment Rental	5,000.00	
Fuel	4,000.00	
Payroll, Ditch Superintendent	55,400.00	
Payroll, Hourly/Seasonal	3,500.00	
Pipe Expenses	15,000.00	
Contract Labor/Services	4,000.00	
Repairs & Maint. & Other Capital Expenditures	20,000.00	
Small Tools	400.00	
Supplies	100.00	
Vehicle Allowance (P. 1,200)	1,200.00	
Vehicle Repairs & Maintenance	3,750.00	
Waste Disposal	50.00	
Water Expense (Fryer Water)	4,000.00	
Total Expense for Maintenance & Operations		116,430.00

OTHER EXPENDITURES

Director Expense	1,440.00	
Insurance, General Liability & Directors Liability	7,800.00	
Insurance, Workers Compensation	3,200.00	
Miscellaneous Expense	200.00	
Payroll Taxes (Employer-paid)	6,277.57	
Professional Fees (Water design, 38" Outlet Tax Prep, City)	9,300.00	
State Taxes	0.00	
Telephone	900.00	
Travel	250.00	
Total Other Expenses		26,837.07

TOTAL ESTIMATED EXPENDITURES FOR 2026

169,712.57

TOTAL CARRYOVER TO 2027

\$1,159,489.20

2026 Budget



Statistics

701 SHAREHOLDERS
6424 ACTIVE SHARES



The background is a light blue to white gradient. It is decorated with numerous realistic water droplets of various sizes. Some droplets are in the top left corner, others are scattered in the middle, and a cluster of larger droplets is in the bottom right corner. Each droplet has a highlight and a shadow, giving it a 3D effect.

PHOTO ALBUM

BY DEWEESE DYE DITCH AND RESERVOIR COMPANY

Pinion Street Repair



Hanging Pipe Removal



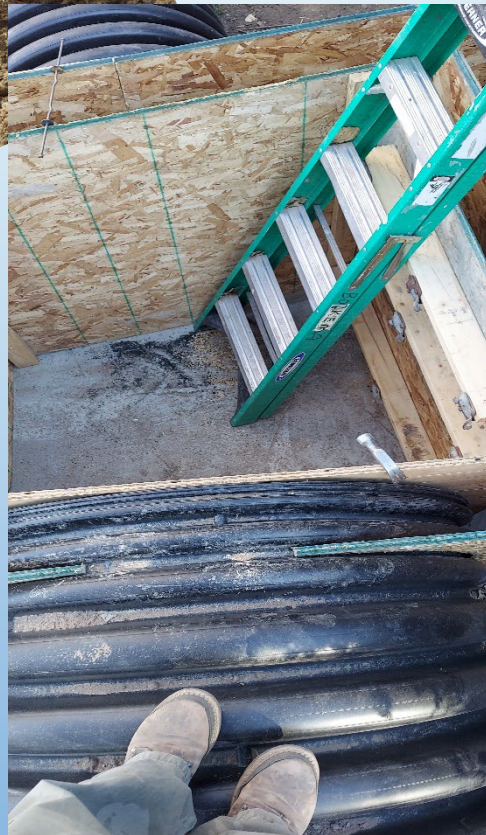
Hanging Pipe Installation



South Canon Pipe Placement



South Canon Box



Hadley Corner Repair



Trash truck damage



Site Visit with Hydrologik

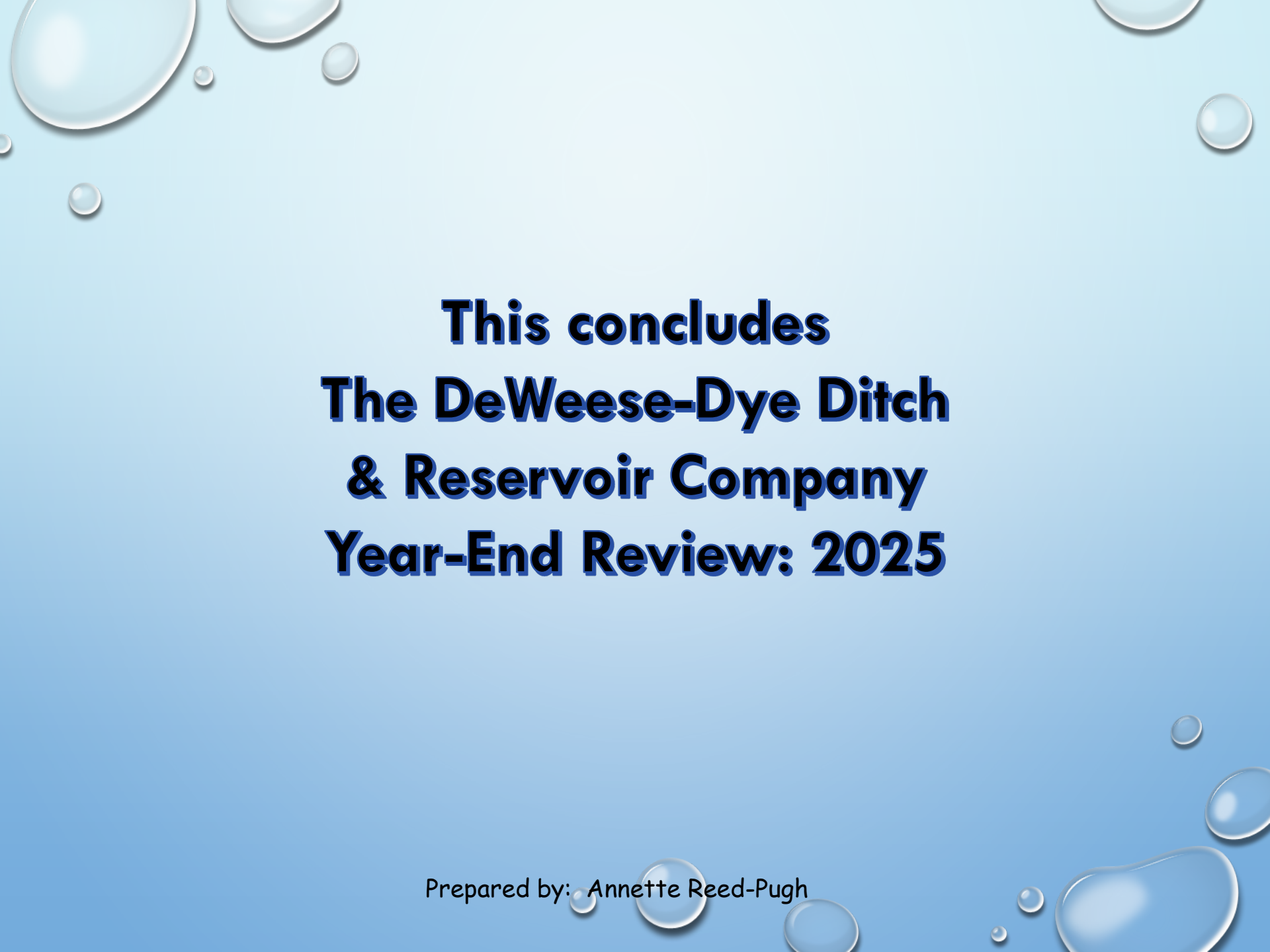


Site Visit with Hydrologik



Formal Agreement with UAWCD



The background is a light blue gradient with several realistic water droplets of various sizes scattered across the top and bottom edges. The droplets have highlights and shadows, giving them a 3D appearance.

This concludes The DeWeese-Dye Ditch & Reservoir Company Year-End Review: 2025

Prepared by: Annette Reed-Pugh