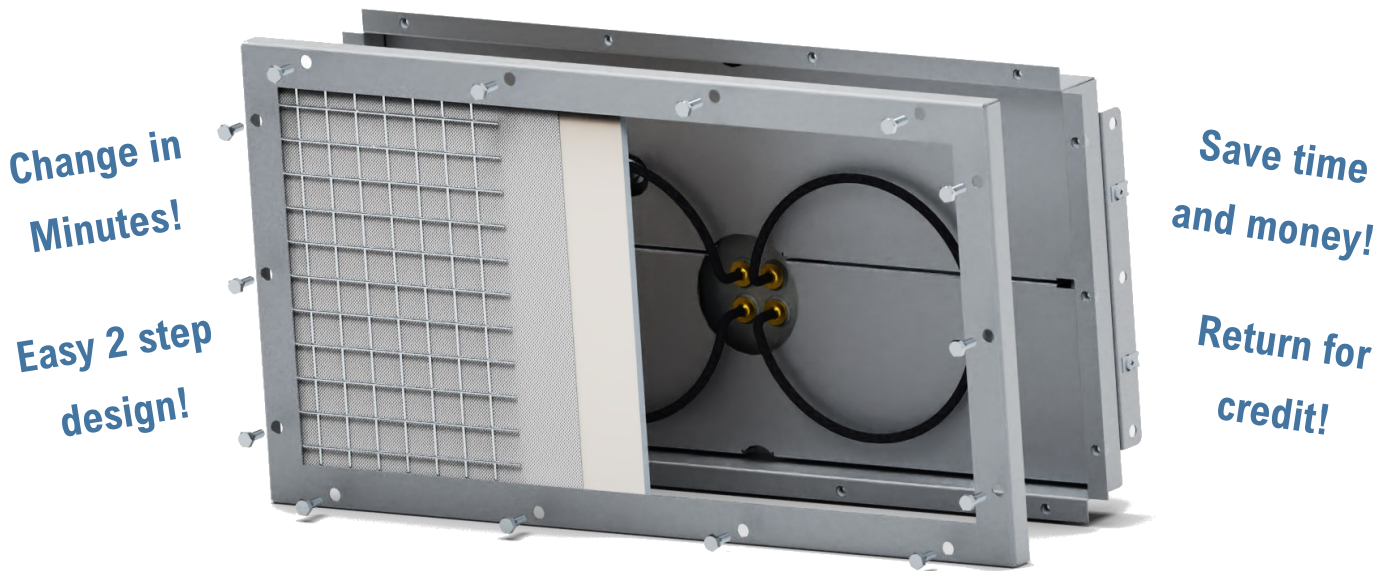


ACS introduces the new ACHS CatCore™ heater. The only catalytic heater with a field replaceable catalyst assembly

CatCore installation & removal is quick and easy thanks to it's single piece frame.



- 1) Uninstall the spent catalyst pad and faceplate by removing the bolts around the perimeter of the heater.**
- 2) Align the new catalyst pad and faceplate to the frame and secure using the previously removed plate.**

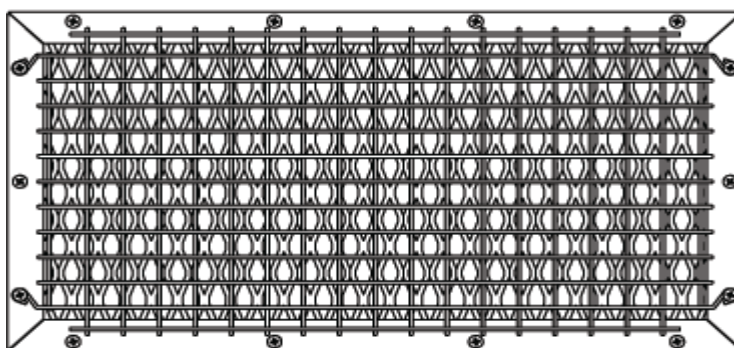
CatCore Catalytic Infrared Heaters from Advanced Catalyst Systems provide superior performance in applications where flameless heating is essential to process efficiency. With the ability to operate indefinitely on natural gas and propane, our catalytic heaters are among the most versatile options for process heating.

Our heaters are built to serve a variety of applications, from gas pipeline instrument heating to industrial heat curing and forming. Please view our list of available construction options and accessories at the end of this brochure, and mention your heating process requirements when requesting a quote. We will custom tailor a cost-effective package to suit your requirements.

Combustion Efficiency Comparison

Heater	Heat Rating BTU/HR	Fuel Heating Value, BTU/SCF	Fuel Use, SCFH	Combustion Efficiency	Free CH4, SCFH	As CO2 eq. GHG, SCFH	CO2, SCFH	TOTAL GHG, Tons/yr
BRAND X	10,000	1010	9.90	70%	2.97	74.26	6.93	41.28
ACS	10,000	1010	9.90	90%	0.99	24.75	8.91	17.12

Replaceable CatCore™



The catalyst assembly including—front bezel plate, expanded metal, protective scrim cloth, and catalyst mat can be quickly disassembled by removing the fourteen (14) 1/4" x 20 Hex head bolts and replacing with a brand new one. The spent core can be returned to Advanced Catalyst Systems, LLC for a core charge credit. No more downtime due to shipping failed heaters to the factory. Available in standard and custom sizes.

Email sales@advancedcatalyst.com for more information

Model #	Size	Max BTU/h Rating
ACSH-66	6 x 6	1,500
ACSH-612	6 x 12	3,000
ACSH-624	6 x 24	6,000
ACSH-88	8 x 8	2,667
ACSH-1012	10 x 12	5,000
ACSH-1212	12 x 12	6,000
ACSH-1224	12 x 24	12,000
ACSH-1236	12 x 36	18,000

Model #	Size	Max BTU/h Rating
ACSH-1248	12 x 48	24,000
ACSH-1836	18 x 36	27,000
ACSH-1848	18 x 48	36,000
ACSH-1860	18 x 60	45,000
ACSH-2424	24 x 24	24,000
ACSH-2448	24 x 48	48,000
ACSH-2460	24 x 60	60,000