

See discussions, stats, and author profiles for this publication at: <https://www.researchgate.net/publication/49647860>

Mechanisms of action of spa therapies in rheumatic diseases: What scientific evidence is there?

Article in *Rheumatology International* · December 2010

DOI: 10.1007/s00296-010-1628-6 · Source: PubMed

CITATIONS

121

READS

136

4 authors:



Antonella Fioravanti

Università degli Studi di Siena

271 PUBLICATIONS 2,962 CITATIONS

SEE PROFILE



Luca Cantarini

Università degli Studi di Siena

374 PUBLICATIONS 5,931 CITATIONS

SEE PROFILE



Giacomo Maria Guidelli

Istituto Clinico Humanitas IRCCS

44 PUBLICATIONS 456 CITATIONS

SEE PROFILE



Mauro Galeazzi

Università degli Studi di Siena

567 PUBLICATIONS 13,831 CITATIONS

SEE PROFILE

Some of the authors of this publication are also working on these related projects:



i sent another paper about it to Clin Exp Rheum. I'm waiting for the response. [View project](#)



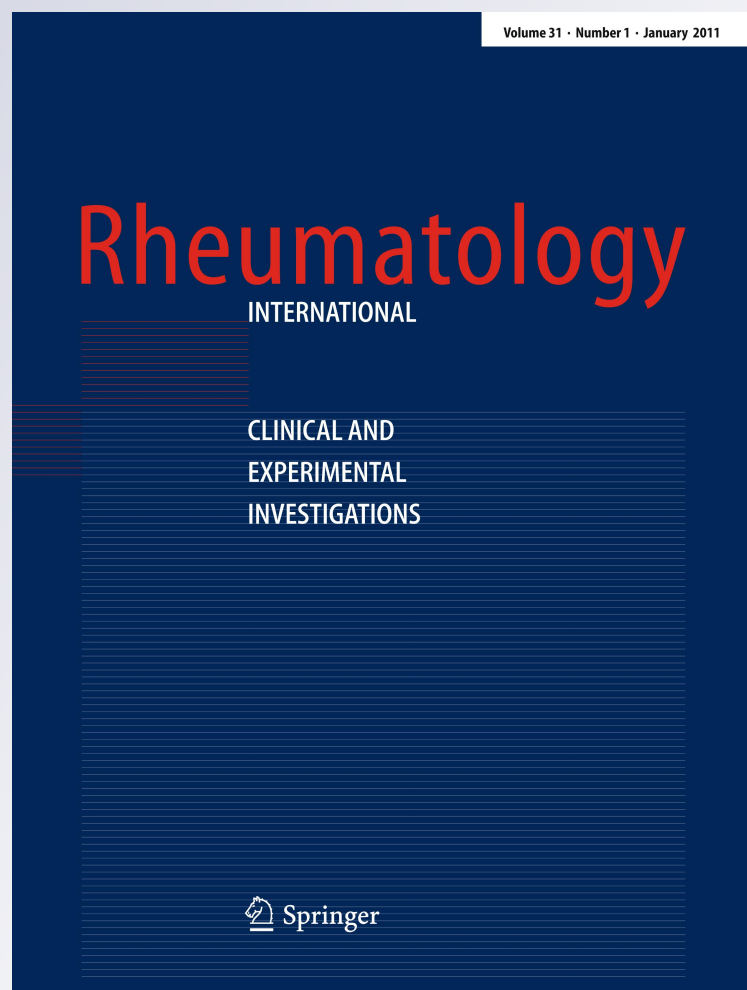
I have not found other cases [View project](#)

*Mechanisms of action of spa therapies
in rheumatic diseases: what scientific
evidence is there?*

Rheumatology International
Clinical and Experimental
Investigations

ISSN 0172-8172
Volume 31
Number 1

Rheumatol Int (2010) 31:1-8
DOI 10.1007/
s00296-010-1628-6



Your article is protected by copyright and all rights are held exclusively by Springer-Verlag. This e-offprint is for personal use only and shall not be self-archived in electronic repositories. If you wish to self-archive your work, please use the accepted author's version for posting to your own website or your institution's repository. You may further deposit the accepted author's version on a funder's repository at a funder's request, provided it is not made publicly available until 12 months after publication.

Mechanisms of action of spa therapies in rheumatic diseases: what scientific evidence is there?

Antonella Fioravanti · Luca Cantarini ·
Giacomo Maria Guidelli · Mauro Galeazzi

Received: 7 April 2010 / Accepted: 13 November 2010 / Published online: 1 December 2010
© Springer-Verlag 2010

Abstract Spa therapy represents a popular treatment for many rheumatic diseases. The mechanisms by which immersion in mineral or thermal water or the application of mud alleviates suffering in rheumatic diseases are not fully understood. The net benefit is probably the result of a combination of factors, with mechanical, thermal and chemical effects among the most prominent ones. Buoyancy, immersion, resistance and temperature all play important roles. According to the gate theory, pain relief may be due to the pressure and temperature of the water on skin; hot stimuli may influence muscle tone and pain intensity, helping to reduce muscle spasm and to increase the pain threshold. Mud-bath therapy increases plasma β -endorphin levels and secretion of corticotrophin, cortisol, growth hormone and prolactin. It has recently been demonstrated that thermal mud-pack therapy induces a reduction in the circulating levels of prostaglandin E2 (PGE2), leukotriene B4 (LTB4), interleukin-1 β (IL-1 β) and tumour necrosis factor- α (TNF- α), important mediators of inflammation and pain. Spa therapy has been found to cause an increase in insulin-like growth factor-1 (IGF1), which stimulates cartilage metabolism, and transforming growth factor- β (TGF- β). There is also evidence of the positive action of mud-packs and thermal baths on the oxidant/antioxidant system, with a reduction in the release of reactive oxygen (ROS) and nitrogen (RNS) species. Overall, thermal stress has an immunosuppressive effect. Many other non-specific factors may also contribute to the

beneficial effects observed after spa therapy in some rheumatic diseases, including effects on cardiovascular risk factors, and changes in the environment, pleasant surroundings and the absence of work duties.

Keywords Spa therapy · Balneotherapy · Mud-packs · Rheumatic diseases · Mechanisms of action

Introduction

Spa therapy comprises a broad spectrum of therapeutic modalities including hydrotherapy, balneotherapy, physiotherapy, mud-pack therapy and exercise [1, 2]. This therapeutic approach has been successfully used in many European countries, as well as in Japan and Israel, in classical medicine as a cure for various illnesses. Today, it continues to be a popular treatment for many rheumatic diseases (RD) [3] due to their chronic nature, problems related to the use of drugs that often have significant side effects and the occasional lack of valid therapeutic strategies [4–8]. Thousands of years of history and the abundance of spa resorts in many European countries have undoubtedly contributed to the popularity of these therapies.

The aim of spa therapy is to reduce pain, relieve muscle spasms and improve muscle strength and functional mobility [1, 2].

Nevertheless, despite their long history and popularity, spa treatments are still the subject of debate and their role in modern medicine continues to be unclear [9].

The action mechanisms of mud-packs and thermal baths are not fully known, and it is difficult to distinguish the effects of thermal applications from the benefits that could be derived from a stay in a spa environment [1].

A. Fioravanti (✉) · L. Cantarini · G. M. Guidelli · M. Galeazzi
Rheumatology Unit, Department of Clinical Medicine
and Immunology, University of Siena, Viale Bracci 1,
53100 Siena, Italy
e-mail: fioravanti7@virgilio.it

In an era of evidence-based medicine, it is necessary to ask what real medical and scientific value these therapies have. The objective of this review is to summarize the currently available information on mechanisms of action and possible effects of spa therapy in RD. We also provide some suggestions for further development in this area.

Mechanisms of action of spa therapy in rheumatic diseases

The mechanisms by which immersion in thermal mineral water or the application of mud packs alleviates suffering in RD are not fully understood. The net benefit is probably the result of a combination of factors, with mechanical, thermal and chemical effects among the most prominent ones [1].

A distinction can be made between the non-specific (hydrotherapeutic in a broad sense) mechanisms common to simple baths in hot tap water and specific (hydromineral and crenotherapeutic) mechanisms, which depend on the chemical and physical properties of the water used. While the former are well known, the latter are difficult to identify and assess [1].

Mechanical effects

Spa therapy may have beneficial effects on muscle tone, joint mobility and pain intensity.

Increased buoyancy and hydrostatic pressure during immersion in thermal mineral water cause many physiological changes. Immersion to the suprasternal notch in spa water (35°C) results in a cascade of reactions including increased diuresis, natriuresis and cardiac output [10–12]. The basis of these physiological effects is considered to be hydrostatic pressure, which forces approximately 700 ml from the lower extremities to the central compartment. Distension of volume receptors by this central hypervolemia is regarded as the trigger for the observed physiological effects [10–12].

Thermal effects

The effects of mud-packs and thermal baths are partially related to temperature. Hot stimuli may influence muscle tone and pain intensity, helping to reduce muscle spasm and to increase the pain threshold in nerve endings. According to the “gate theory”, pain relief may be due to the temperature and hydrostatic pressure of water on the skin [13].

Thermal stress provokes a series of neuroendocrine reactions. In particular, the heat stimulates the release of adrenocorticotrophic hormone (ACTH), cortisol, prolactin

and growth hormone (GH), although it does not alter the circadian rhythm of these hormones [14].

The effect of thermal stress on the hypothalamus–pituitary–adrenal axis seems to be particularly important for the anti-edemigenous and anti-inflammatory actions of corticosteroids, as well as for the frequent alteration of the axis during some rheumatic diseases [15]. The increase in beta-endorphin demonstrated to occur with various spa therapy techniques [16–19] has an analgesic and antispastic effect that is particularly important in patients for whom pain is the prevalent symptom. Interestingly, it has been revealed that the application of mature thermal mud in healthy individuals brings about a rapid increase in plasma beta-endorphin, which returns to pre-treatment levels within the period of so-called thermal reaction [19]. This increase in beta-endorphin is probably the key factor in the mechanism of individual tolerance to thermal mud baths.

Recent data have demonstrated the possibility that normal keratinocytes can produce and secrete a precursor pro-opiomelanocortin (POMC) following various stimuli (e.g. ultraviolet rays, thermal stimuli) which is the common precursor of various endorphins [20]. This finding allows us to formulate the fascinating hypothesis that ultraviolet radiation or thermal stimuli could be used to condition the skin's production of opioid peptides, thus altering the personal emotional sphere or pain threshold. If we add that β -endorphin also has immunomodulatory effects [21], the hypothesis of a close correlation between spa therapies and the psychoneuroendocrine system becomes increasingly convincing.

Furthermore, hyperthermia plays an important role in immune system function.

Hyperthermia also has many effects on granulocytes. Heat increases their mobility, phagocytic and bactericidal properties and enzymatic activity [1].

Furthermore, thermal stimulation increases the extensibility of collagen-rich tissues, such as tendons, fasciae and articular capsules, which may improve the range of motion of joints [1].

The effects described make it possible to break the vicious circle of pain–muscle contraction–altered joint dynamics–pain that characterizes many chronic arthropathies. The reduction in muscle tone and better use of joints represent just two of the most important elements that show the medium- and long-term beneficial effects documented in various clinical studies [22–31].

Chemical effects

The chemical effects of mud packs and balneotherapy are less clear than the physical effects. In theory, it cannot be excluded that the organic substances or minerals in water

or mud, sometimes present in trace amounts, can be absorbed through the skin and then act at a systemic level. However, experimental evidence available in this field is scarce. Shani et al. [32] documented a significant increase in serum concentrations of bromine, rubidium, calcium and zinc in patients with psoriatic arthritis who bathed in the Dead Sea. Solute penetration is presumably influenced by the length of bathing time, the temperature of the thermal water, its composition and other factors, some of which may still be unknown. An in vitro study has demonstrated that substances in aqueous mud extracts can permeate through human full-thickness skin in quantities that have definite effects on spontaneous contractile activity of smooth muscle tissue [33]. Furthermore, it has been reported that the direct application of mud pack has greater clinical effects than the application of nylon-covered mud pack in patients with knee osteoarthritis (OA) [34]. This finding implies a contribution of the chemical properties of the mud to the overall beneficial effects of mud-pack treatment, thus ruling out that the effects are linked exclusively to the action of heat.

Immunologic aspects

Since sulphur spa baths have been successfully used in various skin immuno-mediated afflictions, it has been suggested that absorption through the skin of trace elements present in mineral water and mud packs may affect the immune system [35].

Overall, thermal stress has an immunosuppressive effect. With regard to hyperthermia, a stimulatory effect of the immune response appears to prevail at a moderate increase in local skin temperature, with increases in the proinflammatory cytokines interleukin (IL)-6 [36] and IL-1 β [37], whereas higher temperatures (40–41°C) apparently suppress immune functions [38, 39].

A significant reduction in the circulating levels of T lymphocytes has been demonstrated in healthy volunteers treated with hyperthermal baths [1] and in patients with

respiratory and cutaneous atopy [40]. Hyperthermia-induced T lymphocytopenia and eosinopenia may result from a redistribution of the cells, probably due to the increase in ACTH and cortisol provoked by thermal stress [14].

In vitro studies have demonstrated that sulphurous spa waters have a dose-dependent inhibitory effect on the blast transformation and proliferation of T lymphocytes obtained from peripheral blood in both healthy subjects and subjects affected by chronic inflammatory diseases [40]. On the other hand, immersion in thermal waters at a temperature of 40°C reduces the lymphocyte response to phytohaemagglutinin [41]. Sulphurous spa waters also seem to exert a potent inhibitory action on the production of cytokines, especially IL-2 and interferon gamma (IFN- γ). As these cytokines are mainly produced by CD4+ lymphocytes, it can be hypothesized that memory T cells are the principal target of sulphur-rich waters. The application of sulphurous waters reduces the capacity of memory T cells to proliferate and produce cytokines, thus resulting in an alteration of immune response [42]. Hyperthermia-induced alteration of the cytokine milieu has been recently confirmed in patients affected by ankylosing spondylitis (AS) [43]. Turner et al. showed that the serum levels of tumour necrosis factor (TNF)- α , IL-1 β and IL-6 which were measured before, during and after whole-body hyperthermia were significantly reduced in patients with AS, whereas the changes in healthy subjects were not statistically significant.

Anti-inflammatory and chondroprotective aspects

Recent studies have shown a reduction in the circulating levels of prostaglandin E₂ (PGE₂) and leukotriene B₄ (LTB₄), important mediators of inflammation and pain, in patients suffering from OA or fibromyalgia who undergo mud packs or balneotherapy [44, 45] (Table 1).

Crenotherapy also affects the synthesis of various cytokines involved in the ongoing chondrolysis and

Table 1 Effect of thermal mineral mud baths on various mediators or factor of immune response, inflammation and chondrolysis

Reduction in circulating levels of PGE ₂ and LTB ₄ in patients with OA and fibromyalgia [Ref. 44, 45]
Reduction in TNF- α , IL-6 and IL-1 β circulating levels in patients with AS caused by whole-body hyperthermia (41°C) [Ref. 43, 46–48]
Reduction in the release of ROS and the (RNS) peroxynitrite by PMNs stimulated with N-formyl-methionyl-leucyl-phenylalanine and phorbol-12-myristate-13-acetate [Ref. 58]
Decrease in NO circulating levels in the sera of subjects with OA undergoing mud baths [Ref. 62]
Increase in circulating levels of IGF1 in patients with OA undergoing mud baths [Ref. 52]
Increase in circulating levels of transforming growth factor-beta (TGF- β) has been found in patients with AS after a combined spa-exercise therapy (exercise, hyperthermia and exposure to low doses of radon) [Ref. 53]

PGE₂ prostaglandin E₂, LTB₄ leukotriene B₄, OA osteoarthritis, TNF- α tumour necrosis factor- α , IL-6 interleukin-6, IL-1 β interleukin-1 β , AS ankylosing spondylitis, ROS reactive oxygen species, RNS reactive nitrogen species, PMNs polymorphonucleate leukocytes, NO nitric oxide, IGF1 insulin-like growth factor 1, TGF- β transforming growth factor-beta

inflammation in RD; in fact, a reduction in the cytokines IL-1 β and TNF- α and the soluble receptors of the latter has been demonstrated following a cycle of mud-bath therapy (temperature > 41°C) in patients with OA [46–48] (Table 1).

Several studies have provided evidence for a significant role of matrix metalloproteinases (MMPs), particularly MMP-3 or stromelysin-1, produced by activated chondrocytes and other cell types in the development of cartilage degradation in joint diseases [49, 50]. A recent study by Bellometti et al. [51] showed that MMP-3 serum levels were significantly reduced by mud-bath therapy in patients with OA.

Cycles of mud applications and balneotherapy also bring about an increase in some growth factors, such as insulin-like growth factor 1 (IGF1) [47], which stimulates cartilage anabolism [52]. Furthermore, a significant increase in the circulating levels of transforming growth factor-beta (TGF- β) has been found in patients with AS after combined spa-exercise therapy (exercise, hyperthermia and exposure to low doses of radon) [53] (Table 1). TGF- β is a very potent immunomodulating and anti-inflammatory cytokine which plays a major role in tissue healing, bone remodelling and fibrosis [54, 55].

Among the various factors responsible for inflammatory and degenerative phenomena in joints in various forms of RD, reactive oxygen species (ROS) and nitric oxide (NO) should be taken into consideration [56, 57].

Sulphurous waters have been demonstrated to have an antioxidant effect *in vitro*; in fact, the incubation in sulphurous mineral water significantly reduces the release of ROS and the reactive nitrogen species (RNS) peroxynitrite by polymorphonucleate leukocytes (PMNs) stimulated by N-formyl-methionyl-leucyl-phenylalanine and phorbol-12-myristate-13-acetate [58]. Various studies in humans have highlighted the positive action of mud packs and thermal baths, especially sulphurous ones, on the oxidant/antioxidant system. Grabski et al. [59] reported the reduction in superoxide dismutase (SOD) activity in patients with rheumatoid arthritis (RA) undergoing treatment with sulphuric water. Eckmekcioglu et al. [60] demonstrated that 3 weeks of sulphur baths can reduce the antioxidative defence system (SOD and glutathione (GSH) peroxidase) in the blood of patients with OA. They suggested two possible causes for the decline of these enzyme activities: either as a consequence of reduced oxidative stress during sulphur therapy leading to a lower expression of these enzymes or as an enhanced generation of superoxide radicals exhausting the superoxide-scavenging enzyme. Bender et al. [61] demonstrated that therapeutic baths in mineral water reduced the activity of catalase, SOD, malondialdehyde (MDA) and GSH peroxidase. Other authors have observed a significant decrease in NO and

myeloperoxidase (MPO) and a slight increase in GSH peroxidase in the sera of subjects with OA undergoing cycles of mud applications and balneotherapy [62]. The slight increase in GSH peroxidase does not correlate with the reduction in the other biochemical markers, suggesting that thermal mud possesses various different mechanisms of action.

In a recent study, we assessed the possible modifications of plasma levels of leptin and adiponectin in patients with OA treated with a cycle of spa therapy [63]. Our data showed a slight but not significant increase in plasma leptin concentrations and a significant decrease in serum adiponectin levels at the end of mud-bath therapy cycle. These adipocytokines play an important role in the pathophysiology of OA [64, 65]. In particular, there is some evidence that adiponectin in skeletal joints may have proinflammatory effects and may be involved in cartilage degradation [64, 66]. In view of these recent findings, the decrease in adiponectin after spa therapy demonstrated in our study may play a protective role in OA.

Experimental studies in animal models of arthritis corroborate the evidence of beneficial effects of mud-bath therapy on inflammatory and degenerative joint diseases. Cozzi et al. [67] have recently demonstrated an anti-inflammatory effect of mud-bath applications in Freund's adjuvant-induced arthritis in rats. Following the application of crenotherapy, a reduction in oedema in the rat paws (measured by plethysmometry) was accompanied by a significant reduction in the levels of circulating TNF- α and IL-1 β . In 2007, Britschka et al. [68] confirmed the anti-inflammatory and chondroprotective effects of the application of mud in Zymosan-induced arthritis in rats, by performing histological analysis on synovial tissues and cartilage taken from the sacrificed animals on day 21 of treatment. Examination of the synovial tissue in particular revealed reduced hyperplasia of the lining, reduced vascularization and cellular infiltration in the group of rats treated with mud applications, in contrast to the group of rats treated with simple heated tap water and the untreated (control) group of rats. With regard to cartilage, there was a macroscopically visible reduction in erosive lesions as well as an increase in chondrocyte density and collagen and proteoglycan content only in the mud-treated animals (Figs. 1, 2).

Other aspects

Many other non-specific factors may also contribute to the beneficial effects observed after spa therapy in some RDs, including effects on cardiovascular risk factors.

The lipid-normalizing effects of mud applications and balneotherapy, especially with sulphurous waters, have been reported for decades. The results of such research

Fig. 1 The synovium from control animals stained with H&E is depicted in (a). Sub-synovial infiltration and maintenance of the synovial lining could be observed in samples obtained from mud-treated rats (b). Original magnification $\times 100$ (with kind permission of Dr. Britschka ZMN and Professor de Mello SBV [Ref. 68])

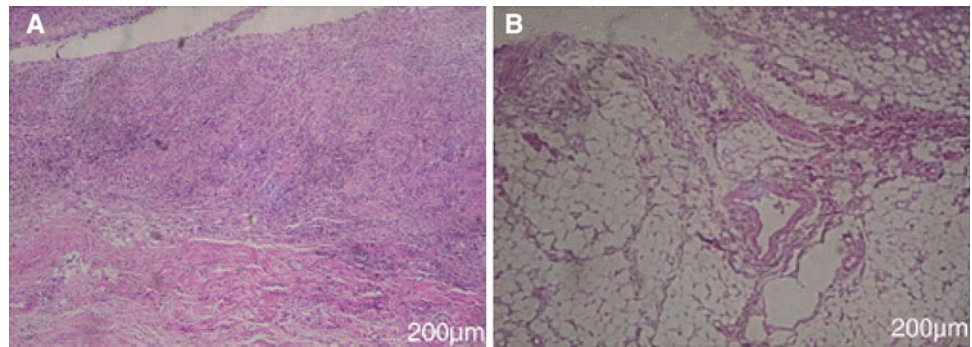
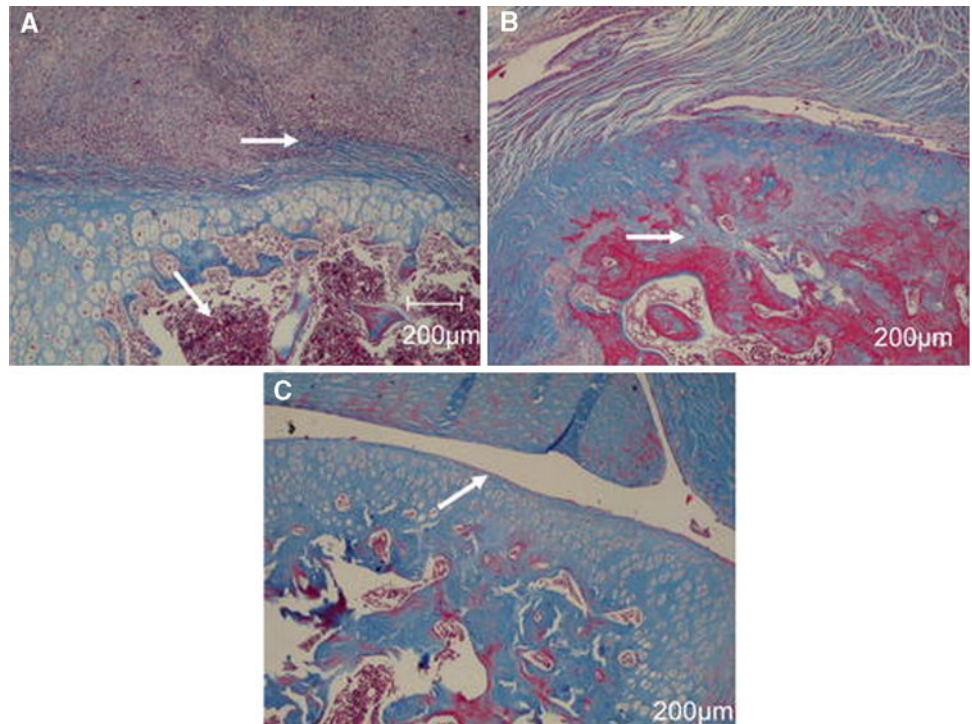


Fig. 2 Photomicrographs of knee joint from rats with Zy-IA in the 21st day stained with Masson trichrome. The pattern observed in untreated animals is shown in (a) and that in the water-treated group in (b). Arrows indicate cartilage erosion with the development of fibrous cartilage, overgrown pannus and subchondral bone damage. c The pattern of the joint from mud-treated group, arrow shows the maintenance of the articular space and cartilage tissue. Original magnification $\times 100$ (with kind permission of Dr. Britschka ZMN and Professor de Mello SBV [Ref. 68])



have documented reductions in total cholesterol, triglycerides and non-esterified cholesterol and a significant increase in HDL cholesterol [69, 70].

More recently, attention has focused on plasma homocysteine, a risk factor for coronary heart disease, congestive heart failure, systolic hypertension, arterothrombotic events, complications in diabetes mellitus, cancer and oxidative stress [71–75]. A significant reduction in plasma homocysteine has been demonstrated in OA patients after a cycle of sulphurous thermal baths [76].

Recently Oláh et al. [77] explored changes in several cardiovascular risk factors in a group of patients suffering from degenerative musculoskeletal disorders subjected to a cycle of balneotherapy. The authors showed a statistically significant and lasting (3 months after the cycle of balneotherapy) decrease in serum levels of C-reactive protein (CRP) in patients treated with mineral thermal baths.

The reduction in cardiovascular risk factors through the use of mud packs and balneotherapy is especially important considering the clear and much stressed association between various RDs and atherosclerotic processes [78].

Finally, other elements need to be taken into consideration concerning the mechanisms of action of mud applications and balneotherapy in RD, such as the particular climatic and environmental conditions of spas and the fact that people rest more and are far from daily stress during stays at spa resorts [1, 2].

Unresolved issues concerning the mechanisms of action of spa therapies

Although the data presented are stimulating, it is impossible to ignore the existence of a complex series of

problems and uncertainties that prevent spa therapies from gaining the full consensus of the scientific community [9]. One of the critical points is the controversial problem of the absorption of the minerals dissolved in thermal waters, i.e. the demonstration of specific effects other than those linked to the simple action of heat. Unfortunately, few studies have been conducted on this topic and little is known about the specific effects of various mineral waters. It is still not clear which elements are essential and what the ideal concentration of each element is in order to attain an optimal response to treatment. It remains to be clarified which mineral waters are most suitable for various diseases and whether the different components exert specific actions. Such evidence would lead to a specialization of spa resorts, which could finally target their therapies more accurately and rationally.

Conclusions

In this review, we have underlined the effects of mud applications and balneotherapy on various mediators or factors of immune response, inflammation and chondrolysis. However, the results reported only refer to short-term modifications of these factors, lasting until the end of the cycle, and little is known of the possible long-term effects. This is a key element in seeking to explain the persistence of the symptomatic benefit induced by such therapies in some RDs, as shown in long-term controlled clinical trials [22–31].

The evidence gained is therefore important but nonetheless only preliminary and awaits confirmation by more in-depth studies conducted according to the canons of modern scientific research. In order to develop Thermal Medicine as a valid and recognized field, a series of studies aimed at providing ever more precise therapeutic indications and clarifying the mechanisms of action and the effects deriving from the application of thermal treatments are imperative.

This is the only way for Thermal Medicine to emerge from the restrictive environment of alternative or “miracle” therapies and free itself of the scepticism of many doctors and patients, gaining the scientific respect that it truly deserves.

References

1. Sukenik S, Flusser D, Abu-Shakra M (1999) The role of SPA therapy in various rheumatic diseases. *Rheum Dis North Am* 25:883–897
2. Bender T, Karagülle Z, Bálint GP, Gutenbrunner C, Bálint PV, Sukenik S (2005) Hydrotherapy, balneotherapy, and spa treatment in pain management. *Rheumatol Int* 25:220–224
3. Nicholas JJ (1994) Physical modalities in rheumatological rehabilitation. *Arch Phys Med Rehabil* 75:994–1001
4. Ofman JJ, Maclean CH, Straus WL, Morton SC, Berger ML, Roth EA et al (2002) A meta-analysis of severe upper gastrointestinal complications of nonsteroidal anti-inflammatory drugs. *J Rheumatol* 29:804–812
5. Bresalier RS, Sandler RS, Quan H, Bolognese JA, Oxenius B, Horgan K et al (2005) Trial investigations: cardiovascular events associated with rofecoxib in a colorectal adenoma chemoprevention trial. *N Engl J Med* 352:1092–1102
6. Kearney PM, Baigent C, Godwin J, Halls H, Emberson JR, Patrono C (2006) Do selective cyclo-oxygenase-2 inhibitors and traditional non-steroidal anti-inflammatory drugs increase the risk of atherothrombosis? Meta-analysis of randomised trials. *BMJ* 332:1302–1308
7. Zhang W, Jones A, Doherty M (2004) Does paracetamol (acetaminophen) reduce the pain of osteoarthritis?: a meta-analysis of randomised controlled trials. *Ann Rheum Dis* 63:901–907
8. Pincus T, Wang X, Chung C, Sokka T, Koch GG (2005) Patient preference in a crossover clinical trial of patients with osteoarthritis of the knee or hip: face validity of self-report questionnaire ratings. *J Rheumatol* 32:533–539
9. Verhagen AP, Bierma-Zeinstra SMA, Boers M et al (2007) Balneotherapy for osteoarthritis. *Cochrane database of systemic reviews* Issue 4. Art. No: CD006864. doi:10.1002/14651858
10. O'Hare JP, Heywood A, Summerhayes C et al (1985) Observation on the effects of the immersion in bath spa water. *Br Med J* 291:1747–1751
11. Weston CFM, O'Hare JP, Evans JM, Corral RJM (1987) Haemodynamic changes in man during immersion in water at different temperatures. *Clin Sci* 73:613–616
12. Epstein M (1992) Renal effects of head-out water immersion in humans: a 15 year update. *Physiol Rev* 72:563–621
13. Melzack R, Wall PD (1965) Pain mechanism: a new theory. *Science* 150:971–979
14. Kuczera M, Kokot F (1996) The influence of SPA therapy on endocrine system. Stress reaction hormones. *Pol Arch Med Wewn* 95:11–20
15. Gur A, Cevik R, Sarac AJ, Colpan L, Em S (2004) Hypothalamic-pituitary-gonadal axis and cortisol in young women with primary fibromyalgia: the potential roles of depression, fatigue, and sleep disturbance in the occurrence of hypocortisolism. *Ann Rheum Dis* 63:1504–1506
16. Laatikainen T, Salminen K, Kohvakka A, Pettersson J (1988) Response of plasma endorphins, prolactin and catecholamines in women to intense heat in a sauna. *Eur J Appl Physiol Occup Physiol* 57:98–102
17. Vescovi PP, Gerra G, Pioli G, Pedrazzoni M, Maninetti L, Passeri M (1990) Circulating opioid peptides during thermal stress. *Horm Metab Res* 22:44–46
18. Kubota K, Kukabayashi H, Tamura K, Kawada E, Tamura J, Shirakura T (1992) A transient rise in plasma b-endorphin after a traditional 47°C hot-spring bath in Kusatsu-spa, Japan. *Life Sci* 51:1877–1901
19. Cozzi F, Lazzarin I, Todesco S, Cima L (1995) Hypothalamic pituitary-adrenal axis dysregulation in healthy subjects undergoing mud-bath-applications. *Arthritis Rheum* 38:724–725
20. Ghersetich I, Freedman D, Lotti T (2000) Balneology today. *J EADV* 14:346–348
21. Berczi I, Chalmers IM, Nagy E, Warrington RJ (1996) The immune effects of neuropeptides. *Baillieres Clin Rheumatol* 10:227–257
22. Guillemin F, Constant F, Collin JF, Boulange M (1994) Short and long-term effect of Spa therapy in chronic low back pain. *Br J Rheumatol* 33:148–151

23. Nguyen M, Revel M, Dougados M (1997) Prolonged effects of 3 weeks therapy in a Spa resort on lumbar spine, knee and hip osteoarthritis: follow up after 6 months. A randomized controlled trial. *Br J Rheumatol* 36:77–81
24. Elkayam O, Ophir J, Brener S, Paran D, Wigler I, Efron D et al (2000) Immediate and delayed effects of treatment at the Dead Sea in patients with psoriasis arthritis. *Rheumatol Int* 19:77–82
25. van Tubergen A, Landewé R, van der Hetijede D, Hidding A, Walter N, Asscher M et al (2001) Combined Spa-Exercise therapy is effective in patients with ankylosing spondylitis: a randomized controlled trial. *Arthritis Care Res* 45:430–438
26. Cantarini L, Leo G, Giannitti C, Cevenini G, Barberini P, Fioravanti A (2007) Therapeutic effect of spa therapy and short wave therapy in knee osteoarthritis: a randomized, single blind, controlled trial. *Rheumatol Int* 27:523–529
27. Fioravanti A, Perpignano G, Tirri G, Cardinale G, Giannitti C, Lanza CE et al (2007) Effects of mud-bath treatment on fibromyalgia patients: a randomized clinical trial. *Rheumatol Int* 27:1157–1161
28. Karagülle M, Karagülle MZ, Karagülle O, Dönmez A, Turan M (2007) A 10- day course of spa therapy is beneficial for people with severe knee osteoarthritis. *Clin Rheumatol* 26:2063–2071
29. Harzy T, Ghani N, Akasbi N, Bono W, Nejjari C (2009) Short- and long-term therapeutic effects of thermal mineral waters in knee osteoarthritis: a systematic review of randomized controlled trials. *Clin Rheumatol* 28:501–507
30. Forestier R, Desfour H, Tessier J-M, Françon A, Foote AM, Genty C et al (2009) Spa therapy in the treatment of knee osteoarthritis, a large randomised multicentre trial. *Ann Rheum Dis* 69:660–665
31. Fioravanti A, Iacoponi F, Bellisai B, Cantarini L, Galeazzi M (2010) Short and long-term effect of spa therapy in knee osteoarthritis. *Am J Phys Med Rehabil* 89:125–132
32. Shani J, Barak S, Levi D, Ram M, Schachner ER, Schlesinger T et al (1985) Skin penetration of minerals in psoriatics and guinea pigs bathing in hypertonic salt solutions. *Pharmacol Res* 17:501–506
33. Beer AM, Junginger HE, Lukanov J, Sagorchev P (2003) Evaluation of the permeation of peat substances through human skin in vitro. *Int J Pharm* 253:169–175
34. Odabasi E, Turan M, Erdem H, Tekbas F (2008) Does mud pack treatment have any clinical effect? A randomized controlled clinical study. *J Altern Complement Med* 14:559–565
35. Sukenik S, Abu-Shakra M, Flusser D (1997) Balneotherapy in autoimmune diseases. *Isr J Med Sci* 33:258–261
36. Sobieska M, Stratz T, Samborski W, Hrycaj P, Mennet P, Müller W (1993) Interleukin-6 (IL-6) after whole body cryotherapy and local hot mud pack treatment. *Eur J Phys Med Rehabil* 3:205
37. Olszewski WL, Grzelak I, Ziolkowska A, Engeset A (1989) Effect of local hyperthermia on lymph immune cells and lymphokines of normal human skin. *J Surg Oncol* 41:109–116
38. Schmidt KL, Simon E (2001) Thermotherapy of pain, trauma and inflammatory and degenerative rheumatic diseases. *Thermotherapy for Neoplasia, Inflammation and Pain*. Springer, Berlin, pp 527–539
39. Lange U, Müller-Ladner U, Schmidt KL (2006) Balneotherapy in rheumatic diseases—an overview of novel and known aspects. *Rheumatol Int* 26:497–499
40. Valitutti S, Costellino F, Musiani P (1990) Effect of sulfurous (thermal) water on T lymphocyte proliferative response. *Ann Allergy* 65:463–468
41. Smith JB, Knowlton RP, Agarwal SS (1978) Human lymphocyte responses are enhanced by culture at 40°C. *J Immunol* 121:691–696
42. Gherstic I, Lotti T (1996) Immunologic aspects: immunology of mineral waters. *Clin Dermatol* 14:563–566
43. Tarner IH, Müller-Ladner U, Uhlemann C, Lange U (2009) The effect of mild whole-body hyperthermia on systemic levels of TNF-alpha, IL-1 beta, and IL-6 in patients with ankylosing spondylitis. *Clin Rheumatol* 28:397–402
44. Bellometti S, Galzigna L (1998) Serum levels of a prostaglandin and a leukotriene after thermal mud-pack therapy. *J Invest Med* 46:140–145
45. Ardiç F, Ozgen M, Aybek H, Rota S, Cubukçu G, Gökğöz A (2007) Effect of balneotherapy on serum IL-1, PGE₂ and LTB₄ levels in fibromyalgia patients. *Rheumatol Int* 27:441–446
46. Cecchetti M, Bellometti S, Lalli A, Galzigna L (1995) Serum interleukin 1 changes in arthrosic patients after mud-pack treatment. *Phys Rheab Kur Med* 5:92–93
47. Bellometti S, Cecchetti M, Galzigna L (1997) Mud-pack therapy in osteoarthritis changes levels of chondrocytes markers. *Clin Chim Acta* 268:101–106
48. Bellometti S, Galzigna L, Richelmi P, Gregotti C, Berté F (2002) Both serum receptors of tumor necrosis factor are influenced by mud pack treatment in osteoarthrotic patients. *Int J Tissue React* 24:57–64
49. Lohmander LS, Hoerner LA, Lark MV (1993) Metalloproteinases, tissue inhibitor, and proteoglycan fragments in kneesynovial fluid in human osteoarthritis. *Arthritis Rheum* 36:181–189
50. Malemud CJ, Islam N, Haqqi TM (2003) Pathophysiological mechanisms in osteoarthritis lead to novel therapeutic strategies. *Cell Tissue Organs* 174:34–348
51. Bellometti S, Richelmi P, Tassoni T, Berté F (2005) Production of matrix metalloproteinases and their inhibitors in osteoarthrotic patients undergoing mud bath therapy. *Int J Clin Pharm Res* 25:77–94
52. Trippel SB (1995) Growth factor action on articular cartilage. *J Rheumatol* 43:129
53. Shehata M, Schwarzmeier JD, Hilgarth M, Demirtas D, Richter D, Hubmann R et al (2006) Effect of combined spa-exercise on circulating TGF-β1 levels in patients with ankylosing spondylitis. *Wien Klin Wochenschr* 118:266–272
54. Centrella M, Horowitz MC, Wozney JM, McCarthy TL (1994) Transforming growth factor-beta gene family members and bone. *Endocr Rev* 15:27–39
55. Shehata M, Schwarzmeier JD, Hilgarth M, Hubmann R, Duechler M, Gisslinger H (2004) TGF-beta 1 induces bone marrow reticulin fibrosis in hairy cell leukemia. *J Clin Invest* 113:676–685
56. Farrell AJ, Blake DR, Palmer RM, Moncada S (1992) Increased concentrations of nitrite in synovial fluid and serum samples suggest increased nitric oxide synthesis in rheumatic diseases. *Ann Rheum Dis* 51:1219–1222
57. Mazzetti I, Grigolo B, Pulsatelli L, Dolzani P, Silvestri T, Roseti L et al (2001) Differential roles of nitric oxide and oxygen radicals in chondrocytes affected by osteoarthritis and rheumatoid arthritis. *Clin Science* 101:593–599
58. Braga PC, Sambataro G, Dal Sasso M, Culici M, Alfieri M, Nappi G (2008) Antioxidant effect of sulphurous thermal water on human neutrophil bursts: chemiluminescence evaluation. *Respiration* 75:193–201
59. Grabski M, Wozakowska-Kaplon B, Kedziora J (2004) Hydrogen sulphide water balneum effect on erythrocyte superoxide dismutase activity in patients with rheumatoid arthritis-in vitro study. *Przegl Lek* 61:1405–1409
60. Eckmekcioglu C, Strauss-Blasche G, Holzer F, Marktl W (2002) Effect of sulfur baths on antioxidative defense systems, peroxide concentrations and lipid levels in patients with degenerative osteoarthritis. *Forsch Komplementarmed Klass Naturheilkd* 9:216–220
61. Bender T, Bariska J, Vághy R, Gomez R, Kovács I (2007) Effect of balneotherapy on the antioxidant system—a controlled pilot study. *Arch Med Res* 38:86–89

62. Bellometti S, Poletto M, Gregotti C, Richelmi P, Berte F (2000) Mud bath therapy influences nitric-oxide, myeloperoxidase and glutathione peroxidase serum levels in arthritic patients. *Int J Clin Pharmacol Res* 20:69–80
63. Fioravanti A, Cantarini L, Bacarelli MR, de Lalla A, Ceccatelli L, Blardi P (2010) Effects of spa therapy on serum leptin and adiponectin levels in patients with knee osteoarthritis. *Rheumatol Int* [Epub ahead of print]
64. Dumond H, Presle N, Terlain B, Mainard D, Loeuille D, Netter P et al (2003) Evidence for a key role of leptin in osteoarthritis. *Arthritis Rheum* 48:3118–3129
65. Lago R, Gomez R, Otero M, Lago F, Gallego R, Dieguez C et al (2008) A new player in cartilage homeostasis: adiponectin induces nitric oxide synthase type II and pro-inflammatory cytokines in chondrocytes. *Osteoarthritis Cartilage* 16:1101–1109
66. Gomez R, Lago F, Gomez-Reino J, Dieguez C, Gualillo O (2009) Adipokines in the skeleton: influence on cartilage function and joint degenerative diseases. *J Mol Endocrinol* 43:11–18
67. Cozzi F, Carrara M, Sfriso P, Todesco S, Cima L (2004) Anti-inflammatory effect of mud-bath applications on adjuvant arthritis in rats. *Clin Exp Rheumatol* 22:763–766
68. Britschka ZMN, Teodoro WR, Velosa APP, de Mello SBV (2007) The effect of Brazilian black mud treatment in chronic experimental arthritis. *Rheumatol Int* 28:39–45
69. Mizoguchi T (1970) Effects of thermal spring bath on lipids in serum. *Med Balneol Climat* 33:115–120
70. Strauss-Blasche G, Eckmekcioglu C, Leibetseder V, Marktl W (2003) Seasonal variation of lipid-lowering effects of complex spa therapy. *Forsch Komplementarmed Klass Naturheilkd* 10:78–84
71. Bostom AG, Selhub J (1999) Homocysteine and arteriosclerosis: subclinical and clinical disease associations. *Circulation* 99:2361–2363
72. Vasani RS, Beiser A, D'Agostino RB, Levy D, Selhub J, Jacques PF et al (2003) Plasma homocysteine and risk for congestive heart failure in adult without prior myocardial infarction. *JAMA* 289:1251–1257
73. Agullo-Ortuno MT, Albaladejo MD, Parra S, Rodríguez-Manotas M, Fenollar M, Ruiz-Espejo F et al (2002) Plasma homocysteine concentration and its relationship with complications associated to diabetes mellitus. *Clin Chim Acta* 326:105–112
74. Sun C-F, Haven TR, Wu T-L, Tsao K-C, Wu JT (2002) Serum total homocysteine increases with the rapid proliferation rate of tumor cells and decline upon cell death: a potential new tumor marker. *Clin Chim Acta* 321:55–62
75. Cavalca V, Cighetti G, Bamonti F, Loaldi A, Bortone L, Novembrino C et al (2001) Oxidative stress and homocysteine in coronary artery disease. *Clin Chem* 47:887–892
76. Leibetseder V, Strauss-Blasche G, Holzer F, Marktl W, Ekmercioglu C (2004) Improving homocysteine levels through balneotherapy: effects of sulphur baths. *Clin Chim Acta* 343:105–111
77. Oláh M, Koncz A, Fehér J, Kálmánchey J, Oláh C, Balogh S et al (2010) The effect of balneotherapy on C-reactive protein, serum cholesterol, triglyceride, total antioxidant status and HSP-60 levels. *Int J Biometeorol* 54:249–254
78. Turesson C, Jacobsson LTH, Matteson EL (2008) Cardiovascular co-morbidity in rheumatic diseases. *Vasc Health Risk Manag* 43:605–614