

Peter Klemm is busy enjoying a stay at the penthouse suite, Granville Island Hotel, a reward for finishing a 6-month painting project titled "Day Lillie's in Hope Mills". It is his most favoured getaway location.



*To be an artist is to believe in life.*  
Henry Moore

## Sheila Leeder Art Challenge announcement

Take inspiration from this Dr. Seuss quote. "You're off to great places! Today is your day! Your mountain is waiting so...get on your way!"

**The challenge:** Your art piece will represent a great place you have been or would like to visit in Canada.

Announcing the next Art Challenge in memory of one of our dear members Sheila Leeder. Start preparing your artwork for submission by October 1. Voting will be online before the October meeting and winners announced at that meeting - prizes will be awarded for the top three entries.

### Rules:

- 1) One submission per member.
- 2) Must be a new piece of art work created for this challenge.
- 4) Any surface, size or art medium is fine as you will be submitting a photograph for the online competition.
- 5) No signatures - must be anonymous for the voting to be fair.
- 6) Must represent the topic.

**Deadline for submission is October 1.**

To submit your photo (this is an online challenge with online voting) please visit the website for full details here

[sswras.com/art-challenge-submit-1](http://sswras.com/art-challenge-submit-1)

You will be sent a Survey Monkey survey to vote for your top 3 before the October meeting.

*Sarah, Art Challenge Coordinator*

**THERE WILL BE NO MONTHLY MEETINGS  
IN AUGUST.  
MEETINGS WILL RESUME IN  
SEPTEMBER.  
HAVE A GREAT SUMMER  
EVERYONE!**

# SSWRAS EXECUTIVE AND COMMITTEE CHAIRS

President  
 Past President  
 Vice President  
 Treasurer  
 Co-Secretary  
 Co-Secretary  
 Membership Coordinator  
 Art Show Coordinator  
 Assistant Art Show Coordinator  
 Newsletter  
 Communications  
 Assistant Treasurer  
 Advertising & Publicity  
 Plein Air Coordinator  
 Program Coordinator  
 Webmaster  
 Assistant Website Coordinator  
 Weekend Workshops  
 Thursday Night Classes Coordinator

Open Juried Show Coordinator  
 Historian  
 Paint-Out Retreat Coordinator  
 The Sheila Leeder Memorial Art Challenge  
 Members-at-Large  
 A/V Team Coordinator  
 Small Group Shows  
 Meeting Greeters  
 Library  
 Nominating Committee  
 Outside Venues

Refreshments  
 Social Committee  
 Sunshine

Peter Klemm  
 Nancy Grigsby  
 Angelo Morrisey  
 Susan Perez  
 Wendy Gust  
 Lori Levesque  
 Maria Monks  
 Mindy Hardiman  
 Linda Batista  
 Catherine Sheppard  
 Linda Long  
 Bonnie Mathie  
 Lynn Robinson  
 Sheryl Walker  
 Violet Smythe  
 Jess Rice  
 Li Boesen  
 Catherine Sheppard  
 Violet Smythe  
 Charlene Cumberland

**VACANT POSITION**  
 Pat Vickers  
 Alyson Thorpe  
 Sarah Dolling  
 Adam Lipschultz, Karen Huckell, Sarah Dolling, Linda Morris  
 Dan Strathdee, Dennis Boos  
 Shelly Kent-Snowsell  
 Adam Lipshultz & Lois Harte  
 Audrey Bakewell  
 President & members-at-large (at President's discretion)

The Playhouse: Linda Hilts & Lynne Adams  
 Peninsula Medical: Cheryl Bodnar & Karen Huckell  
 Mother Hubbard's: Lynne Adams, Alyson Thorpe  
 Reet Herder  
 Margo Yee & Barb Mitchell  
 Drena Hambrook

president@artsociety.ca  
 v-p@artsociety.ca  
 treasurer@artsociety.ca  
 secretary@artsociety.ca  
 secretary@artsociety.ca  
 membership@artsociety.ca  
 artshows@artsociety.ca  
 newsletter@artsociety.ca  
 communications@artsociety.ca  
 advertising@artsociety.ca  
 pleinair@artsociety.ca  
 programs@artsociety.ca  
 website@artsociety.ca  
 workshops@artsociety.ca  
 thursdayclasses@artsociety.ca  
 thursdayclasses@artsociety.ca

**The new list will be published in the September Newsletter**



Mindy Hardiman (and Lynda Batista)

Our next major show is  
**October 15 & 16, 2022**

The collection of paintings will be on Friday, October 14th. Submissions will be set up after the first meeting and clear rules will be emailed out to the membership before that.

Mindy is awaiting a reply from the Landmark Pop-Uptown Gallery.



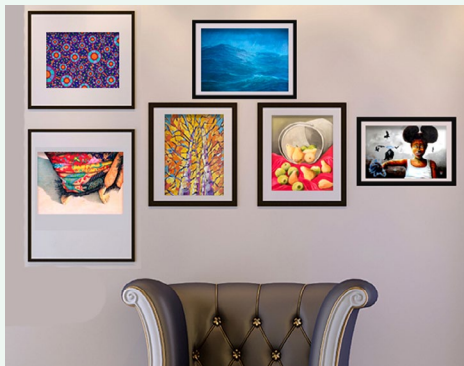
Please e-mail Catherine Sheppard at

[newsletter@artsociety.ca](mailto:newsletter@artsociety.ca)

DEADLINE August 25th for September.

*thank you*

## SSWRAS ON-LINE GALLERY SHOW 2022



Our ongoing online show is ready to go, if you would like more information and to add one piece of art for sale to the gallery you can do so here:

<https://sswras.com/online-gallery>

If anyone needs more information they can contact me at [webmaster@artsociety.ca](mailto:webmaster@artsociety.ca)

*Thanks, Jess*

## SSWRAS Outreach Committee



Recently SSWRAS has formed an Outreach Committee. The purpose is to give back to our community and one of the things we will be doing is donating used art supplies to Semiahmoo House for their art program and to some local public schools.

Pat Vickers and Karen Huckell will be collecting art materials at our general meetings or you can contact Pat at 604-542-9724 or Karen at 778-871-3605 to arrange a time to drop off your donations.

If you'd be interested in joining the committee or have any ideas we'd love to hear from you.

# Lets Print!

An Adventure in Block + Relief + Mono Printing, Carving, Stamping and other  
Printmaking Techniques with Violet Smythe

September 8th to October 6th, 2022

(5 weeks) - In Person class *Class size is limited to 16*

Fee: \$55.00 – includes \$5 materials fee

Registration opens 13 July 2022

Registration for this class will start July 13th and all the information will be posted on the website, sent out via MailChimp to the members and the July Newsletter.

More information about the other classes being offered this Fall will be forthcoming but in the interim here is what is scheduled...

\* Oct 20,27, Nov 3,10 Nancy Grigsby Mixed Media via zoom

\* Nov 17 & 24 Georgina Johnston Ginadoodles

---

Here is the booked line up for the Fall. I just heard back from Lori Goldberg and she is now expecting to travel to Japan in September so cannot do a demo/presentation but would like to be considered

to present in 2023.

Perry Haddock asked me to contact him again in two weeks time to chat and confirm his date in October (he is away).

I am looking for someone to fill the spot for September now. Any suggestions are welcome!

\* 12-Sep Lori Goldberg TBA

\* 17-Oct Perry Haddock acrylic

\* 14-Nov Catherine Robertson Snowy Mountains in Acrylic

I think that's it for now. I will contact Perry in a couple of weeks and will contact Catherine in August to reconfirm. Cheers!

Violet Smythe

Thursday Night Class Coordinator



# TAH-DAH

*What have you  
been up to?*

These 2 little paintings have just sold at  
the Peninsula Gallery, Sidney, BC.  
- Catherine Robertson



*Spring Meadow, Jericho Park*  
12" x 12" acrylic on deep canvas

*Forest Jewels*  
10" x 10" acrylic on deep canvas

After a 2.5 year delay due to covid,  
Rogers Chocolates Ltd. has now sent my  
design in for use on their 6-chocolate  
Christmas gift tins. They will be found in  
various Rogers' outlets or, I believe, directly  
from Rogers' Chocolates in Victoria, BC.  
in November or sooner.

10" x 10" acrylic on deep canvas

Landmark PopUp - June 2 - 26th by Eileen Fong



Landmark PopUp - June 2 - 26th by Linda Morris



*Every artist was  
first an amateur*  
Ralph Waldo Emerson



Sold through  
Pacific Arts  
Market online  
gallery

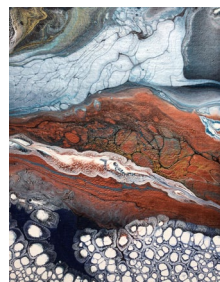
Landmark PopUp - June 2 - 26th by Catherine Sheppard



**Pictures  
Sold**



Landmark PopUp - June 2 - 26th by Audrey Bakewell





# DROP-IN

## Thursday afternoon sessions Weekly Art Group

Free for members - \$5 fee per session for non members

Would you like to paint with a friendly group of people? Would you like input from other artists and see how they create?

This is a group of members that gathers informally every Thursday afternoon to talk and paint from 1:00 to 4:00 pm at the South Surrey Recreation & Arts Centre, 14601 - 20 Avenue Surrey, BC.

You work on your own with no instruction. Join in for fun and fellowship!

For questions/concerns, please contact Sandra Wagstaff, Thursday afternoon sessions

[sandyw@telus.net](mailto:sandyw@telus.net)

## OUTSIDE VENUES

- Pelican Rouge - Caroline Baasch

This venue is booked for the upcoming year and some paintings have sold. It is popular with both artists and some buyers. The coffee shop is delighted.

- The Playhouse - Linda Hilts / Lynne Adams

Just finished the change over for the new three month period

- Peninsula Medical - Cheryl Bodner / Karen Huckell

Venue is booked and changing over on a regular basis.

## PLEIN AIR:

Our Plein Air sessions have begun! They will be held every Tuesday morning throughout summer and into September.

Artists who wish to participate should sign up now. If you have attended fairly regularly in the past, you will remain on the list. Please indicate if you want to be dropped from the current list so you no longer receive weekly emails.

### New Plein Air Artists:

Sign up now ([pleinair@artsociety.ca](mailto:pleinair@artsociety.ca)) to receive weekly emails with the schedule, date, times, directions. Local inspirations that provide a different and interesting painting site are chosen every week. Groups meet Tuesday mornings at the painting site around 9am. The morning is dedicated to painting and then we break for a picnic lunch weather permitting.



Plein Air offers a casual setting with no set schedule. It is a great opportunity to share ideas and thoughts with fellow artists.

Bring art supplies, sunscreen, water, and refreshments. Cameras are permitted.

To sign-up please email [pleinair@artsociety.ca](mailto:pleinair@artsociety.ca)

# UPCOMING 2-Day WORKSHOPS for the FALL:

**NICOLE SLEETH**

## All About Colour

### Oil Painting Workshop



If you have found yourself frustrated by “muddy” or dull colour in your oil paintings, having difficulty mixing the colours you want, or overwhelmed by choice at the art supply store or from your paint collection, this workshop is for you!

This workshop will help you understand colour more thoroughly, match colours more efficiently, choose effective pigments for your goals, and merge conceptual and perceptual understanding of colour. Through a series of exercises, discussions, and demonstrations, you will gain knowledge in topics such as the colour wheel, properties of colour (hue, chroma, and value) and how they relate to one another, colour temperature, direct and indirect painting, colour charts, and how to avoid “muddy” colours for clear and vibrant results in your paintings. There will be instructor demos, discussions and explanations, and plenty of hands-on painting time with the opportunity to ask questions.

Some oil painting experience recommended (no acrylic please).

*Suitable for intermediate painters and adventurous beginners.*

**2 DAY WORKSHOP** - August 20 & 21 on zoom

\$212.00 members

\$232.00 non-members

Sign up deadline: August 13

11:00 am to 3:30 pm

to sign up for this workshop, go to:  
<https://sswras.com/workshops>

**Charlie Easton**

## Telling a Story in your Painting

*Acrylic or Oil*



### Getting your inspiration onto canvas to maximum effect.

Some workshops aim to teach you exactly how to paint in a very specific way. This is not one of those workshops. Yes, this course will be packed with tips, techniques, exercises and advice on how to create beautiful paintings in any medium, but most importantly I'll be helping you to find your own voice.



As a teacher, I aim to provide an environment that allows you to flourish as an artist: positivity, support, timely advice and a gentle dose of cracking-the-whip will help you to become the painter you want to be.

Brief course outline:

The day will start with a critique of some of your work, through which you will gain many tips and insights on your work. It'll be followed by an introduction to my methodology, then a live demo, and will continue with one-on-one instruction as you paint.

**1 DAY WORKSHOP** - Sat., Oct. 15<sup>th</sup> on zoom

\$98.50 members

\$113.00 non-members

Sign up deadline: October 8th

10:00 am to 3:00 pm

to sign up for this workshop, go to:  
<https://sswras.com/workshops>

Visit Charlie's website at: <http://charlieeaston.com>

*Art is coming face to face with yourself.*  
Jackson Pollock

## SSWRAS WEBSITE

If you would like to add to our Meet our Members's section on our society's website please use link below. We will be featuring different members every month on our page.

<https://form.jotform.com/221288485366264>

NOTE: link to view other member submissions

View other member submissions on the website. For questions/concerns, please contact Jess.

Thanks, Jess

[webmaster@artsociety.ca](mailto:webmaster@artsociety.ca)



Pat Vickers



Catherine Sheppard



Maria Monks



## What's Thursday Night Class been up to?

*Making Ink and Watercolour Work in Your Landscapes*, taught by Wendy Mould, took place in May. Wendy taught the class how to do simple drawings and explained how mark making such as dots and squiggles can create depth and texture. She also explained how to use hatching and crosshatching for maximum effect, as well as how to use watercolour to enhance a drawing, and use watercolour as a background for a drawing. Here is a sampling of what we accomplished!



Margo Yee



Elayne Preston



Terrie Levitt



Carole Kisielius



Carole Kisielius



Carole Kisielius



Elayne Preston



Wendy Mould



Tracy Suzuki



Charlene Cumberland



Terrie Levitt

Submitted by Charlene Cumberland

*The most seductive thing about art is the personality of the artist.*  
Paul Cezanne

## THURSDAY NIGHT CLASSES

Charlene Cumberland - Violet Smythe

Wendy Mould class was very well received.

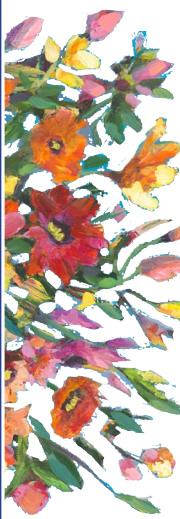
Violet will be teaching a class in September and registration will begin July 13th.



# Art in the Garden

Music provided by  
"The Chaff" featuring  
Jim Morrison  
and Eddie Ram

Held SAT., July 23 & SUN., July 24 with 13 artists  
and artisans. Great weather and well attended.





# WHAT'S HAPPENING at



Marilyn Kelm will be showing her art at the Pelican Rouge Cafe for the month of August.

Pelican Rouge Coffee Shop is located at : 15142 North Bluff Rd, White Rock, BC

The owners, Dianne and Helen, have generously offered wall space for SSWRAS members to hang their work, a month at a time.

SPACE: The "art wall" space is separated by "pillars". As a result, there are 3 separate (but adjacent) areas along the length of the wall.

Two of the areas measure approximately: 8.5 feet x 4.5 feet. The third area measures approximately: 5.5 feet x 4.5 feet.

The walls are painted dark blue.

DISPLAY TIME: Work will be displayed for a month at a time.

It is up to artists if they wish to take all the space, or if they would like to share the space.

Pelican Rouge will handle all sales and take a 20% commission on all sales.



We are currently booked until March 2024. If you would like to be on the waiting list or have any questions, please contact CAROLINE BAASCH at [cbaasch@shaw.ca](mailto:cbaasch@shaw.ca)

*Art is standing with one hand extended into the universe  
and one hand extended into the world, and letting ourselves  
be a conduit for passing energy.*

Albert Einstein