



Photo: Sean Fenzi

Our presenter for the May 16th meeting is

SARA ROBICHAUD

www.sararobichaud.ca

Sara Robichaud completed her Masters of Fine Arts degree at the University of Victoria in 2009, after receiving her BFA at Queen's University in 1995. She currently lives in Nanaimo, BC and teaches on Vancouver Island.

She has taught at the Surrey Art Gallery, the Vancouver Island School of Art and during her Masters, as a sessional instructor at the University of Victoria. Sara has been the Golden Certified Working Artist for Vancouver Mainland and Vancouver Island since 2006.

Her work is rooted in formalist painting, engaging the viewer in an inquiry between the atmospheric and lyrical qualities of the form and the hard physicality of their material.

Her process includes: staining, layering from chalky opaque paints to transparent saturated colours, taping / scraping viscous layers of heavy gel and using lace as a stencil. Enmeshed with personal life experiences, Sara explores generational feminine themes using an alluring and original visual language.

Sara is represented in Calgary at the Herringer Kiss Gallery and in Vancouver at Gallery Jones.

Sara's work has been exhibited nationally and at international art fairs in New York, Toronto, and Los Angeles. It is also part of numerous private and public collections in North America and the Middle East.

The next monthly meeting is Monday May 16. This will be a "hybrid" meeting. You can attend in-person and it will be recorded.

NOTE: An e-mail will be sent to members prior to the meeting to inform them of Covid protocols.

GOLDEN'S virtual lecture demo with Sara Robichaud is an upbeat and informative online experience that is meant to provide an overview of the vast array of products on offer from this paint company. Using the zoom platform, partici-

pants will have the opportunity to observe a presentation that combines a digital slideshow with live painting and to take part in a Q & A. Beginning with the story of the GOLDEN company, the talk will go on to explore the main paint lines, mediums (to thin paint), gels (to thicken paint) and grounds (starting with gesso). Fundamental acrylic paint properties and distinctions will be spread throughout and the event will conclude with varnishing and recommended health and safety practices. Highlights include newer products like SOFlat Matte Acrylic Colors and Pouring Medium.



SSWRAS EXECUTIVE AND COMMITTEE CHAIRS

President	Peter Klemm	president@artsociety.ca
Past President	Nancy Grigsby	
Vice President	Angelo Morrisey	v-p@artsociety.ca
Treasurer	Veronica Newell	treasurer@artsociety.ca
Co-Secretary	Wendy Gust	secretary@artsociety.ca
Co-Secretary	Lori Levesque	secretary@artsociety.ca
Membership Coordinator	Lori Chalmers	membership@artsociety.ca
Art Show Coordinator	Mindy Hardiman	artshows@artsociety.ca
Assistant Art Show Coordinator	Linda Batista	
Newsletter	Caroline Baasch	newsletter@artsociety.ca
Communications	Linda Long	communications@artsociety.ca
Assistant Treasurer	Bonnie Mathie	
Advertising & Publicity	Lynn Robinson	advertising@artsociety.ca
Plein Air Coordinator	Sheryl Walker	pleinair@artsociety.ca
Program Coordinator	Violet Smythe	programs@artsociety.ca
Webmaster	Jess Rice	website@artsociety.ca
Assistant Website Coordinator	Li Boesen	
Weekend Workshops	Catherine Sheppard	workshops@artsociety.ca
Thursday Night Classes Coordinator	Violet Smythe	thursdayclasses@artsociety.ca
	Charlene Cumberland	thursdayclasses@artsociety.ca
Open Juried Show Coordinator	VACANT POSITION	
Historian	Pat Vickers	
Paint-Out Retreat Coordinator	Alyson Thorpe	
The Sheila Leeder		
Memorial Art Challenge	Sarah Dolling	
Members-at-Large	Adam Lipschultz, Karen Huckell, Sarah Dolling, Linda Morris	
A/V Team Coordinator	Dan Strathdee, Dennis Boos	
Small Group Shows	Shelly Kent-Snowsell	
Meeting Greeters	Adam Lipschultz & Lois Harte	
Library	Audrey Bakewell	
Nominating Committee	President & members-at-large (at President's discretion)	
Outside Venues		
	The Playhouse:	Linda Hilts & Lynne Adams
	Peninsula Medical:	Cheryl Bodnar & Karen Huckell
	Mother Hubbard's:	Lynne Adams, Alyson Thorpe
Refreshments	Reet Herder	
Social Committee	Margo Yee & Barb Mitchell	
Sunshine	Drena Hambrook	



SHEILA SYMINGTON (above right)

Sheila Symington, a founding member of our South Surrey White Rock Art Society, passed away on April 24.

Sheila's name is synonymous with the development of the visual arts community in South Surrey. Almost 45 years ago she was one of the founding members of The Painters Group, now known as the South Surrey/White Rock Arts Society.

Sheila served the art community for many years in a variety of capacities. She was president of the SSWR Art Society, founded and ran the White Rock Summer School of Art, was a signature member of the Federation of Canadian Artists, and member of the Northwest Watercolour Society

Sheila was always seeking innovative ways to enhance the artistic goals of the local community while planning for the future.

She was a generous and very talented artist and will be dearly missed by our society members.

WHAT'S HAPPENING AT PELICAN ROUGE

Pat Vickers will have her artwork displayed at the Pelican Rouge for the month of May.



THE TINKLER (SOLD)

20 X 16

Varnished watercolour/pen and ink
on wood board.

LORI LEES STOUT

The Tinkler was one of Lori's first
dog portraits. The painting was also
featured on the cover of the Summer
Spotlight arts magazine in 2020.



PLUMMY - 9 x 11 - watercolour

PAT VICKERS



GARLIC STUDY - 9 x 12 - watercolour

PAT VICKERS

Pelican Rouge Coffee Shop is located at : 15142 North Bluff Rd, White Rock, BC, V4B-5M1

The owners, Dianne and Helen, have generously offered wall space for SSWRAS members to hang their work, a month at a time.

SPACE: The "art wall" space is separated by "pillars". As a result, there are 3 separate (but adjacent) areas along the length of the wall.

Two of the areas measure approximately: 8.5 feet x 4.5 feet. **The third area** measures approximately: 5.5 feet x 4.5 feet.

The walls are painted dark blue.

DISPLAY TIME: Work will be displayed for a month at a time.

It is up to artists if they wish to take all the space, or if they would like to share the space.

Pelican Rouge will handle all sales and take a 20% commission on all sales.

We are currently booked until Feb 2024. If you would like to be on the waiting list (in case of cancellations) or have any questions, please contact CAROLINE BAASCH at cbaasch@shaw.ca.

Our Plein Air sessions will begin on **Tuesday, MAY 17th**, at the GLADES, and continue every **Tuesday** morning throughout the summer, into September.

Artists who wish to participate should **sign up now**. If you have attended fairly regularly in the past, you will remain on the list. Please indicate if you want to be dropped from the current list so you no longer receive weekly emails.

NEW PLEIN AIR ARTISTS:

Welcome! First of all, sign up now to receive the schedule (when ready) and weekly emails providing dates, times, directions, and local inspirations. There is a different interesting painting site every week.

We meet on **Tuesday mornings**, usually around 9:00 a.m. and paint for the morning into the afternoon. We tend to break for a picnic lunch if weather permits.



But please know that you are free to arrive and leave whatever time you choose (no need to check in), and there are no lessons involved. There are always helpful artists around. Bring your art supplies, sun-screen, water, refreshments, and camera. In other words, we all do our own thing!

To sign up - email: pleinair@artsociety.ca

SOUTH DELTA ART GUILD WORKSHOPS

WE STILL HAVE A FEW SPOTS OPEN

Landscapes in Acrylics or Oils by

DALE BYHRE

Saturdays & Sundays, May 7,8,14,15, 2022

For In Person Workshops, contact:

www.southdeltaartistsguild.com

For questions/concerns, please contact:

Ann Hilton, Workshop Committee Chair
South Delta Art Guild

Thursday afternoon drop-in sessions / Weekly Art Group

Free for members - \$5 fee per session for non members

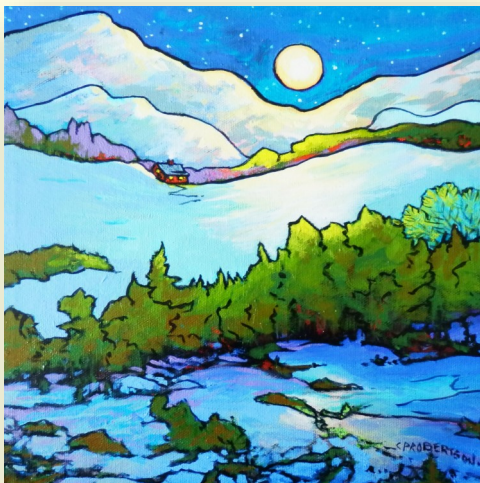
Would you like to paint with a friendly group of people? Would you like input from other artists and see how they create?

This is a group of members that gathers informally every **Thursday** afternoon to talk and paint from 1:00 to 4:00 pm at the South Surrey Recreation & Arts Centre, 14601 - 20 Avenue Surrey, BC.

You work on your own with no instruction. Join in for fun and fellowship!

For questions/concerns, please contact
Sandra Wagstaff, Thursday afternoon sessions

sandyw@telus.net



WINTER MOON (L) SOLD

9 X 12

Acrylic

Catherine Robertson

EVENING IN THE GARDEN SOLD

9 X 12

Acrylic

Catherine Robertson



The SSWRAS Spring Show kicked off the season with a very successful show.

Attendance was great - 250 visitors - even though the Sunday hours had to be shortened and the show closed at 1pm.

We had sales of around \$3 500.00 and the quality of work was very high.

Musical guests, "The Chaff", featuring "Little" Jim Morrison and Eddie Ram, Jr. aka "fast Eddie", provided two days of wonderful music and entertainment.

The show was a huge success - thanks to everyone who pitched in and made it happen!



Marney-Rose Edge is a Vancouver based artist who paints beauty with an air of romance. It is her true mastery that make her paintings come alive. Although Edge is well known for her watercolours, oils have become an important part of her creative process.

Her subject matter over the years has included florals, nests, seascapes, animals, and landscapes. The subject suggests the choice of medium. Marney-Rose is a popular and well respected, teacher and juror sharing her extensive knowledge with students across the country. She was chosen as one of the elite instructors for the recent symposium with the CSPWC.

Marney-Rose has appeared on the cover of International Artist Magazine, with a 10 page feature article. Her work has been featured in the highly-acclaimed series of Splash books, the Best of Watercolour and Acrylic works, The Best of Acrylics, as well as receiving many other awards. This year she was featured on Stella's Studio a television show out of Toronto

She is a Senior Signature member of the Federation of Canadian Artists, serving on the Board of Directors for a number of years, and a Signature member of the Canadian Society of Painters in Watercolour.

She started painting in oil and cold-wax in 2019. www.marneyroseedge.com / Instagram: [@edgefineart](https://www.instagram.com/edgefineart)

LIST OF SUPPLIES -

Pan Pastel Portrait set and sponge applicators

Shelf liner

Cooking oil

Tissue paper

Paper Palette

Board (for Yupo paper)

Translucent Yupo paper - sheet.

Can of cold wax by Gamblin

Squeegees - Light grey one is hard plastic from Opus

Dark grey is somewhat flexible from Opus

Orange one - Silicone bowl scraper - brand is Messmeister from kitchen store in White Rock

Small piece of shelf liner, portion of garden net, piece of rubber belt that goes on gears.

(All for mark making)

Make up applicators

Palette knives and chop sticks

Jars of powdered pigments

Two sizes Speedball rollers - soft.

A woodgrain tool

A hard acrylic roller

Ceramic pattern roller.

Small palette for storing leftover paints

Pad of Translucent Yupo paper

Two 8x6 wood cradles

Paper towels and gloves (not shown)

COLOURS:

Indigo - Karma Pigments

Cinnibar - Karma Pigments

Quinacridone Magenta - Gamblin / Indian Yellow - Gamblin

Titan Buff - Gamblin

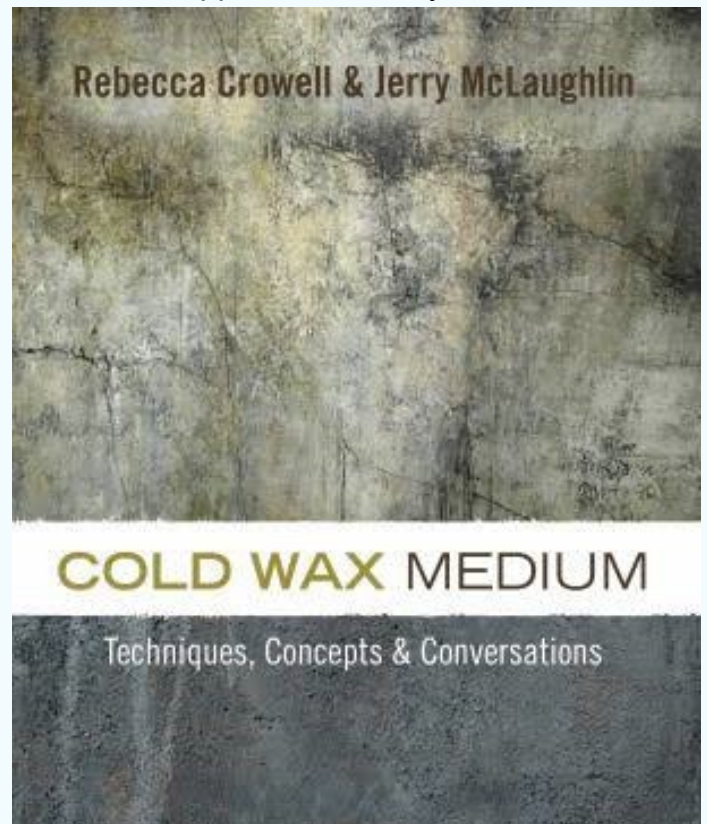
Transparent Orange - Gamblin / Radiant Blue - Gamblin

Radiant Titanium White - Gamblin / Van Dyke Brown - Gamblin

Yellow Ochre Pale - Winsor and Newton



Supplies for Marney's demo



Recommended reading

TIPS AND POINTERS FROM THE DEMO:

1. Mixing the paint: You want about **1/3 Cold Wax Medium to 2/3 oil colors**.
2. Try to use a firm surface for cold wax and oils - like cradle board. You can use canvas but then you need more wax. Once paint is mixed, move to another palette.
3. Tape the Yupo paper to a board. You can spread the paper with a bit of wax before starting to make the colour slide more easily.
4. Start with intuitive mark-making; "build a history" under the painting - scrape the paint on and move it around freely.
5. **REMEMBER:** Acrylics can't be put on top of the oils.
6. Wipe excess wax off tools as you go along.
7. Oil paint mixed with cold wax dries a lot more quickly than plain oil paint - it's this semi-wet stage that allows the marks to stay put more successfully.
8. If you lose your light values, don't add more white - rather scrape the mixture back to reveal the white of the paper.
9. Cold wax is semi-solid at room temperature and can be a bit stiff, especially if stored in the fridge. The wax will loosen up with warmth. It will be much looser in the summer time.
10. You don't have to worry about opacity and the "fat over lean" principle you usually have to be concerned with when painting in oils.
11. Water-soluble oils don't add any advantage - however, they can be used with the cold wax.
12. This process is not suitable for watercolour paint.
13. Finished papers on Yupo paper can be put behind glass or mounted onto a hard board.

COLOURS USED FOR THE NEST : (Below)

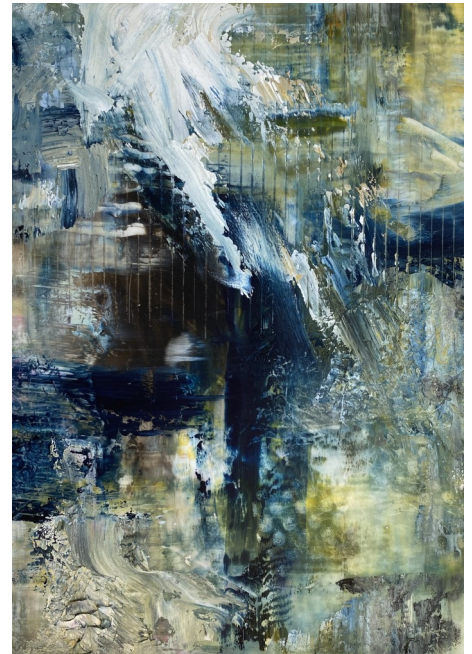
Indigo, cinnabar, magenta AND Van Dyke brown

SOME TIPS:

1. Oil-primed cradle board was used - but gesso will do the job just as well.
2. Start with random mark-making - just to add colour to the substrate.
3. Cover board with Van Dyke brown and start "building the nest".
4. remove paint to create the light parts and put it back on to create the deeper parts.
5. Paint the eggs in with a paint brush.



ABSTRACT IN PROCESS



CAPTIVATING CANVASES

FEATURING LOCAL ARTISTS: Audrey Bakewell, Eileen Fong, Linda Morris, Catherine Sheppard
 LOCATION: Landmark Pop-Up Town Gallery, 15140 North Bluff Rd, White Rock, Central Plaza Shopping Centre
 DATES AND TIMES: June 2 to 26
 Wednesday, Thursday, Sunday 11-4
 Friday and Saturday 10-5
 Opening Reception Saturday June 4 from 2-4pm

10% of all PAINTING sales will go to the Ukrainian Red Cross.

Free admission

THE ARTISTS: **Audrey Bakewell** is an AFCA Signature member of the Federation of Canadian Artists. She loves to mix the unexpected with bold colours, whether working with watercolour or acrylic paint. Her work at this show will feature several different subjects and techniques.




Eileen Fong studied Chinese painting and other painting media while working in the health field. She has lived in British Columbia for most of her life, and it's beautiful surrounds have become her source of inspiration. Eileen strives to capture light and colours of nature with a sense of peace and spontaneity.




Linda Morris is a local artist who has been painting for about 18 years. She specializes in oil painting, oil pastel and acrylic painting. Linda's art has evolved over the years. She is becoming more abstract in her approach to a painting, "seeing it" as an extension of herself. She shows her love of animals and the beautiful province we live in.

Catherine Sheppard loves to capture her own original images on camera, hoping to catch something that inspires her to recreate it on paper, using the intense colours of pastels. She loves nature and especially likes to photograph birds and animals.

Captivating Canvases

June 2nd to 26th

Opening reception:
Saturday, June 4th / 2 - 4 pm.

Featuring four Artists:

- Audrey Bakewell
- Eileen Fong
- Linda Morris
- Catherine Sheppard

10% of all Painting sales for the Ukrainian Red Cross

Hours:
Wednesday, Thursday & Sunday
11 am - 4 pm
Friday & Saturday
10 am - 5 pm
debit, credit & cash accepted for all sales.

Landmark Pop-Up Town Gallery - 15140 North Bluff Rd, White Rock



(ABOVE)

WINTER-WONDERLAND #2

SOLD

LINDA MORRIS

Part of the proceeds of from the sale of this painting will be donated to Red Cross for Ukraine.



(ABOVE) **SOLD**

BOATS IN STEVESTON

12 x 12

Oil

LINDA MORRIS

(LEFT) **SOLD**

INTEGRATION

20x16

Oil

LINDA MORRIS



GALAXY TREE (SOLD) from the FCA Gallery on Granville Island

12 X 12

Acrylic

AUDREY BAKEWELL

