

Our next Zoom meeting will be April 12

Our guest artist will be Veronica Newell, a society member and our Society Treasurer. Veronica will be showing us how to set up Etsy to sell our work.



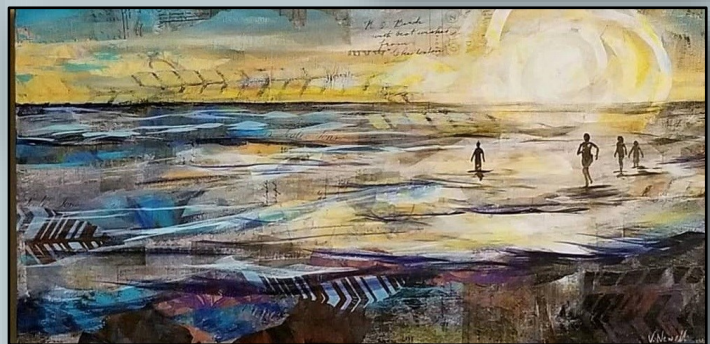
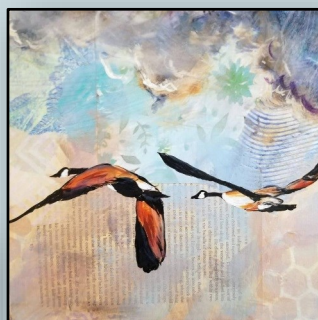
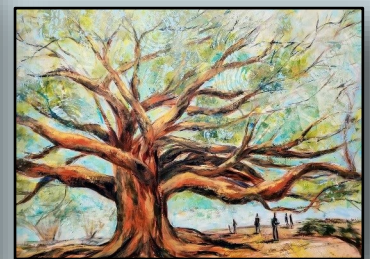
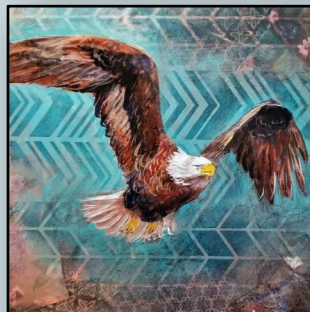
Veronica Newell resides in Surrey. She makes creative and vivid paintings of birds and landscapes inspired by the beauty of B.C.

“My paintings are surreal or semi-realistic, done in acrylics on canvas. I love to paint forests, water, and nature scenes in fun colours and contemporary compositions. I also work as a physio-

therapist in White Rock. I’m fortunate to be surrounded by spectacular local scenery and loved by my family. Life is colourful!

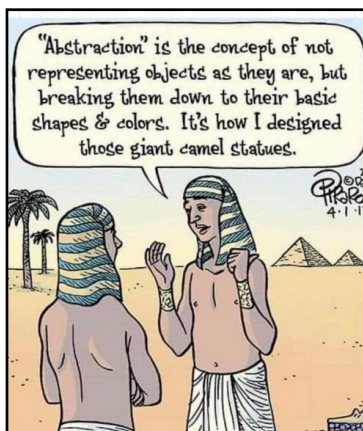
I have always loved art. I remember my joy at winning an art contest at school with my colourful rainbow drawing. I remember how fun it was when my parents let us paint our playroom walls with giant murals. I know I have always had a creative corner in my soul but I didn’t realize it could grow to become such a big part of my adult life. Initially through crafts, then quilting, then on to painting, my love of creativity has grown. Art has given me a peaceful focus and an ability to create something beautiful, like magic. As I allow myself to delve more fully into life as an artist, I am discovering more about myself. I love all the aspects of art:

design, creation, classes, supplies, exhibits, commissions, my studio, and the wonderful artist groups around Vancouver. I love it all! And I crave the variety. There is always a new corner to turn and a new special moment to be discovered. This makes me smile and makes me excited for the future and for the next painting” ~Veronica Newell



SSWRAS EXECUTIVE AND COMMITTEE CHAIRS

President	Peter Klemm	president@artsociety.ca
Past President	Nancy Grigsby	
Vice President	Angelo Morrisey	v-p@artsociety.ca
Treasurer	Veronica Newell	treasurer@artsociety.ca
Co-Secretary	Wendy Gust	secretary@artsociety.ca
Co-Secretary	Sandy Gagnon	secretary@artsociety.ca
Membership Coordinator	Lori Chalmers	membership@artsociety.ca
Art Show Coordinator	Jess Rice	artshows@artsociety.ca
Newsletter	Georgina Johnstone	newsletter@artsociety.ca
Communications	Linda Long	communications@artsociety.ca
Assistant Treasurer	Bonnie Mathie	
Advertising & Publicity	Lynn Robinson	advertising@artsociety.ca
Assistant Art Show Coordinator	Laurie Ruppel	
Plein Air Coordinator	Sheryl Walker	pleinair@artsociety.ca
Program Coordinator	Violet Smythe	programs@artsociety.ca
Webmaster	Jess Rice	website@artsociety.ca
Weekend Workshops	Sarah Dolling	workshops@artsociety.ca
Thursday Night Classes Coordinator	Elizabeth Peacock, Charlene Cumberland	thursdayclasses@artsociety.ca
Thursday Night Monitors (Non-elected)	Pat Wolczuk, Tracy Suzuki, Nancy Grigsby	
Open Juried Show Coordinator	Veronica Davies	
Historian	Pat Vickers	
Paint-Out Retreat Coordinator	Alyson Thorpe (Non-elected position: Nancy Grigsby, Assist.)	
Members-at-Large	Adam Lipschultz, Violet Smythe, June Bloye, Karen Huckell, Pamela Orth	
A/V Team Coordinator	Dan Strathdee, Dennis Boos	
Small Group Shows	Mindy Hardiman & Shelly Kent-Snowsell	
Meeting Greeters	Adam Lipschultz & Lois Harte	
Library	Audrey Bakewell & Sandra Tomchuk	
Nominating Committee	President & members-at-large (at President's discretion)	
Outside Venues	The Playhouse: Linda Hilts & Lynne Adams Peninsula Medical: Cheryl Bodnar & Karen Huckell Mother Hubbard's: Linda Morris & Violet Smythe	
Refreshments	Reet Herder	
Social Committee	Margo Yee & Barb Mitchell	
Sunshine	Drena Hambrook	
Workshop and Thursday Night Classes 'Monitors'	Nancy Grigsby, Pat Wolczuk, Tracy Suzuki.	



10 Famous Quotes About Art.

Ralph Waldo Emerson - "Every artist was first an amateur."

Henri Matisse- "Creativity takes courage."

Pablo Picasso - "Every child is an artist."

Ansel Adams - "You don't take a photograph, you make it."

Thomas Merton - "Art enables us to find ourselves and lose ourselves at the same time."

Sheila Leeder Memorial Art Challenge

Art Challenge: Did you notice the change? This time our challenge is for 'art', not just painting. We're calling for art in a more general sense.

For the April challenge, 'Spring has Sprung', we are opening up the challenge to include all media. So, this might include wire sculpture, stained glass, clay sculpture, fabric art etc. Be creative, make something new! Think ART.

NB. To keep the voting fair do not sign your work on the front or anywhere that will be prominent on your artwork.

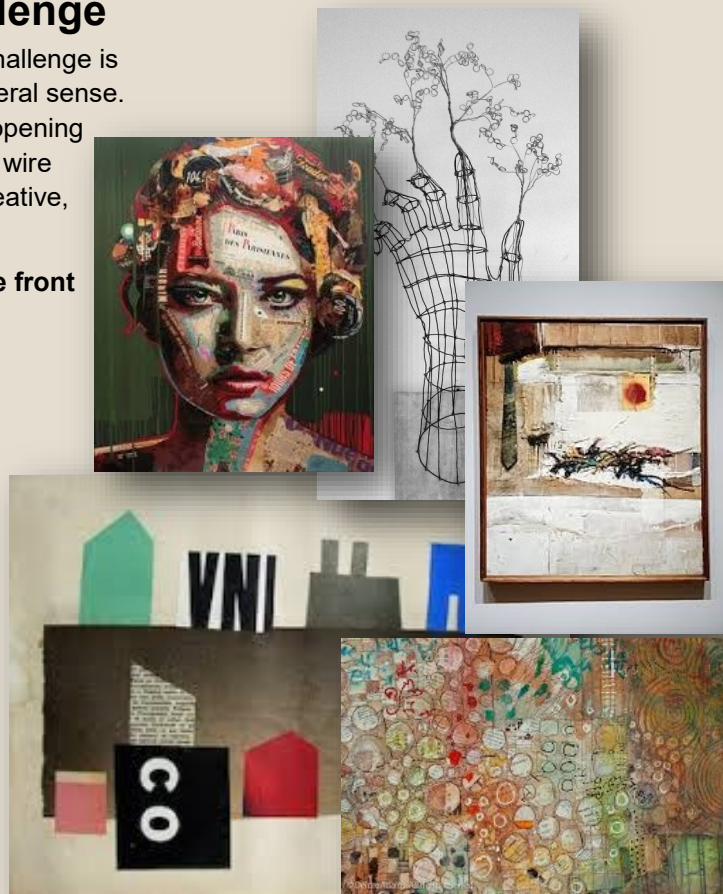
~ June Bloye Art Challenge co-ordinator.

Members may enter one piece of art based on this theme via the Society website under 'Members'. There are no size or medium restrictions at this time.

You may vote for your 3 favourites during the **5 days BEFORE the monthly meeting. Voting ends at 6 pm on the day BEFORE the meeting.**

No member should vote more than one time for their own painting. Second or third votes will not be counted.

The results will be announced at the monthly meeting after votes are counted and prizes will be awarded in due course.



Where Do You Create?



"This is my backyard happy place, only a few steps away from my back door, but miles away from everyday concerns. I have a prep area under the window, desk area for drawing and painting, cabinets and shelves for supply storage, plus lots of wall space to hang finished paintings. I even have a cozy chair in the corner to sit and contemplate if my painting is truly finished or if there is more to be done...it's also a good place to have a glass of wine and figure out my next project. I just turn the music up and drift off to my creative zone....." Lori Lees-Stout

Tah-Dah! & Covid, Shmovid! What Have You Been Working On?



BOUQUET ROSE
Sandra Tomchuk



FIRECRACKER II
Audrey Bakewell



BURST
Caroline Baasch



FIESTA
Caroline Baasch

Sandra Tomchuk, Audrey Bakewell, Anna Kopcok and Caroline Baasch all had paintings accepted into the FCA 'Bloom' exhibition which ran from March 15-28.



FEDERATION OF CANADIAN ARTISTS



COPPERFIELD
Acrylic Pour
Audrey Bakewell



PONDSCAPE
Acrylic pour
Audrey Bakewell



PINK ON PINK
Anna Kopcok



**VAN GOGH
INSPIRED**
Anna Kopcok

Audrey Bakewell's 'Copperfield' and 'Pondscape' have been accepted into the FCA Fraser Valley Chapter's show 'Celebration Creativity'



**THE PIER. SOME DISTANCE,
MOST DON'T**
Audrey Bakewell.

Audrey's painting 'The Pier, Some Distance, Most Don't' has been accepted into the FCA's Annual International Mail-In Art exhibition. March 29—April 18 at the Federation Gallery



BLUE VASE
10" x 8" Oil on canvas
Anna Kopcok

Anna Kopcok also had her painting "Blue Vase" accepted into the FCA's Curated Collection



CELEBRATION

12" x 36"

Acrylic on canvas

Sherron Fairbairn

"It was Valentine's Day at 4 am on the pier in White Rock. The moon was full and I was celebrating Valentine's Day with my husband. The tide was in and the reflections were mesmerising. I snapped the photo and about four years later got the courage to paint this waterfront beauty."

~**Sherron Fairbairn.**



CLEVELAND DAM WATERSHED

AND THE LIONS, BC

24" X 24"

acrylic on canvas

Catherine Robertson

"The well-known 'Lions' reflect their twin peaks into the still lake waters created by the Cleveland Dam, BC, which feeds essential water to many areas in the Lower Mainland." - **Catherine Robertson**



Sherron Fairbairn's art was also showcased, along with paintings by the late Voja Moroccan, at White Rock's Attractive Distraction Gallery (1377 Johnstone Rd.) throughout March.



FEDERATION OF CANADIAN ARTISTS



THE UNKNOWN

15" x 30"

acrylic pour

Audrey Bakewell



BACKWATER

Acrylic pour

Audrey Bakewell's 'Unknown' and 'Backwater' were accepted into the FCA 'Spotlight Show' which ran from the 8th to the 14th of March online and in person at the Federation Gallery on Granville Island



NIGHT FERRY TO LANGDALE
12" x 24"
acrylic on canvas
Catherine Robertson

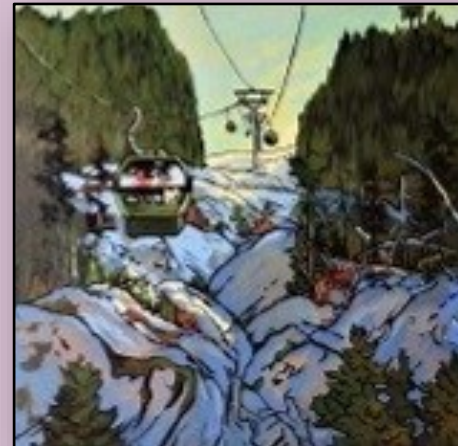
Pursuit365.

Cheryl Bodnar and Tammy Baily were very excited at the release of Pursuit365 on International Women's Day, March 8th. Pursuit365 is an all inclusive book co-authored by 365 Canadian women from Nova Scotia to Vancouver Island, from all walks of life. Cheryl and Tammy are two of the co-authors. The book includes Jann Arden, BifNaked, Tosca Reno and many others.

Every day in 2021 their social media will feature one of the 365 Canadian women in the book. The book's publisher has done an outstanding job bringing the project to life. Follow @fresh_mag@pursuit_365 to read these inspiring women's bios.

The book sold out almost immediately after release.

Well done ladies!



SEA TO SKY GONDOLA,
SQUAMISH, BC.
16" x 16"
acrylic on canvas
Catherine Robertson

Catherine Robertson's two paintings 'Night Ferry to Langdale' and 'Sea to Sky Gondola, Squamish, BC.' were both sold to the same collector from the online FCA show 'Curated Collection' which runs March to April.



MOM AND ME
20" x 24" Oil
Linda Morris

"I sold another painting. This is unbelievable for me that I sold 4 paintings in a row! What a lovely start to 2021!"

Linda Morris

Congratulations ladies!!



One of Sylvie Peltier's paintings from her show 'Aquatika' at the Centre Culturel Francophone, 1551 W 7th Ave, Vancouver. The show runs from March 11 to April 22

*"The Artist's Journal April-May-June issue has been a profile of my work in this issue and I thank Eve so much for this wonderful publication, dear to the hearts of artists, outlining upcoming submissions all over BC and beyond!
Thank you Eve" ~ Catherine Robertson.*



PEACE AND TRUST
Peter Klemm



BROTHERS ACROSS THE WATER
Peter Klemm

Peter's paintings 'Peace and Trust' and 'Brothers Across the Water' have been juried into the Federation of Canadian Artists' exhibition 'Peace and Trust' which runs from May 17 to May 30.



FEDERATION OF CANADIAN ARTISTS

Subscriber profile:
Catherine Robertson AFCA

Growing up cruising and exploring British Columbia's beautiful and rugged coastline, skiing and investigating its lush mountains and forests, all resulted in Catherine's profound love and respect for the wilderness, habitats and the creatures that call these places their home. As a result, the major themes of Catherine's paintings describe these areas in all their seasonal changes, most often however, while they are covered in snow, something dear to the heart of this one-time explorer.

Catherine is self-taught with the exception of a few workshops from well-respected artists. She has been a full-time, practising artist for over 35 years and paints in the acrylic medium. Many of her drawings are of local birds, preferring the Prismacolor coloured pencil and ink media for these.

She was invited into membership by the *Mondial Art Academia* in southern France and was later offered their prestigious *Artiste de Mois Award* in 2020. Catherine received her *Signature Status* with the *Federation of Canadian Artists* in the same year and has won many awards for her work. Her work is recognized for its unique style, brilliant colour associations, along with excellent drawing skills.

Catherine has finished commissions for *Hollywood North* and one of her pieces is contracted to the well-known *Rogers Chocolates Ltd.* on Vancouver Island.

She lives and works in White Rock, B.C.

To contact Catherine and to see her work, visit <http://www.robertsongallery.com/>

The Cheapest But Best Tool

"I used to be addicted to buying art materials - especially expensive ones. I was looking for the one tool or material that would suddenly make my art unique. Well, I never found that magic tool. Changing and improving my art was a slow process. It happened because I learned more art-making information. I did, however find one very excellent tool during that time. And I didn't find it in an art store. I discovered it in a house painting store. And it was one of the best but cheapest tool I ever found." ~ California abstract artist **Nicholas Wilton.**

Nicholas Wilton's favourite tool - a housepainter's straight edge. The blade on the bottom allows you to make very straight edges if that's what you want but it can also be used as a scraper and paint spreader.



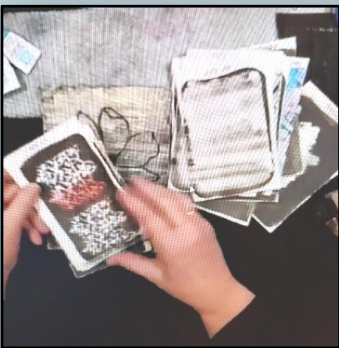
Anne Breckon - Gouache Resist Technique with Ink.



Anne Breckon usually paints in a realistic style but when she came across this technique on the internet it gave her a fresh break and a chance to experiment.

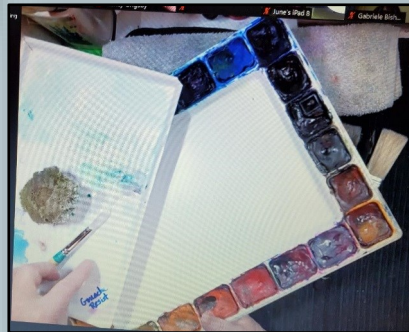


She paints many small works using this technique to experiment. And refine ideas.



Anne also makes 'sketch' samples on which she plays with the technique using mark - making, stamps, stencils, sponges, etc.

Anne uses a separate 'pop-in' tray from her 'Premium' palette to mix the watercolour and gouache. (You can get additional trays for this brand of palette so you can keep your colour mixes separate.) She mixes the white gouache with some of the Teal watercolour. It doesn't have to be thick.



SUPPLIES

Speed Ball Ink 'Super Black'

Gouache - White, Windsor Newton

Watercolour - Cobalt Teal Blue, Daniel Smith

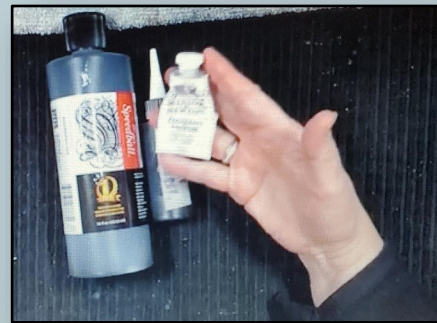
Brushes - Mop brush, regular watercolour brushes, house painting brush etc.

For this demo Anne was using Arches 140lb cold press paper. The paper must be able to stand up to the process.

Squirt bottles for water and ink.

Disposable gloves.

Towel or absorbent mat to work on.



Speedball Ink - 'Super Black' and White gouache



Anne uses many kinds of brushes including a Haki brush. Anne is showing a brush from a hardware store. Anne recommends that you keep the brushes you use for this technique separate from your regular painting brushes.

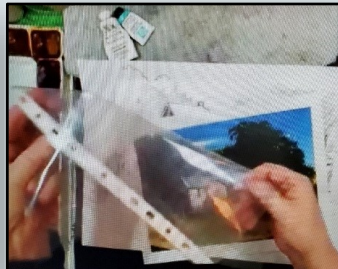
Transferring your image onto paper. -

Anne starts with a reference photo. She recommends choosing a photo that has dramatic lights and shade. She likes 33% darks so that the ink can be dramatic. Look at your choice and squint your eyes to judge value pattern or maybe print off a greyscale version. After enlarging your photo 'trace' the image onto a transparent sheet protector. Use a Sharpie coloured marker to 'trace' the details of the scene. Copy and enlarge your 'tracing' to the size you want on your printer.

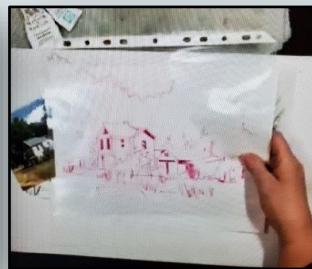
If you want you can colour in the pattern of darks with pencil so you can understand the pattern of darks and lights.



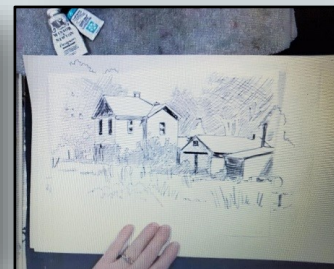
Anne's original photo enlarged.



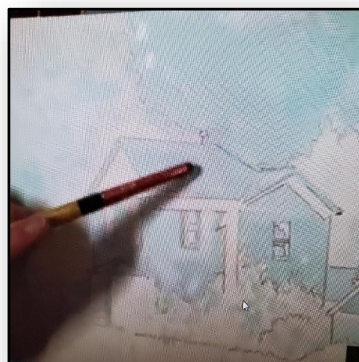
'Trace' the outline in your image onto a transparent sheet protector.



Anne's 'tracing' on the sheet protector

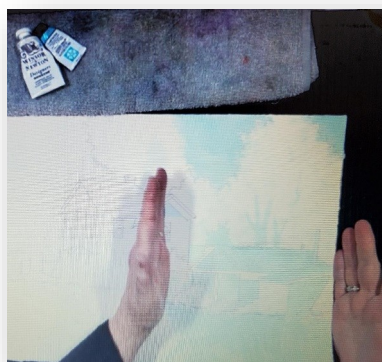


The finished drawing.



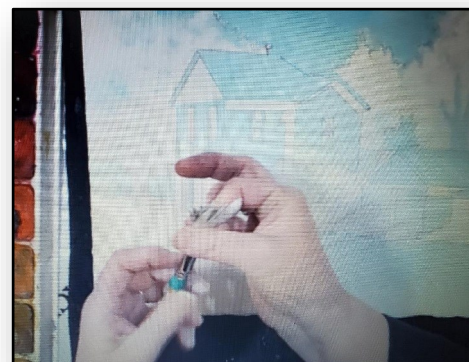
Anne mixes the white gouache with her Teal watercolour. The mix doesn't have to be thick. When you're finished you can leave it on the palette to be reconstituted later.

She takes a little of the mix on her brush and dabs over the area to be painted. She then drops a little water from a water dropper and spreads it around. Remember—only paint the areas you want to paint later. You're 'saving' these areas for the colour you will add later.



Once you have your image on the paper the aim is to **only paint the areas that you will want to paint later. You will be using the gouache/watercolour mix as a 'resist'.**

In the picture above Anne shows that she has already started this process having painted the gouache/watercolour on half her paper.



Anne shared a trick. If you twirl the hairs of your brush around with your fingers you can dab around the edges of trees etc. for texture.



Anne points to the negative area around a tree shape where you could use the 'brush twirl' trick to create a textured edge.



Once your painting has dried you then gently paint over it with the black ink using horizontal strokes from side to side. Yeh, sounds crazy I know but hang in there. Anne 'decants' some of the ink into a dropper then she squeezes the ink onto her brush. NB - mark your designated ink brush so it will not contaminate your other brushes



Here more ink is dripped onto the brush. This is safer and cleaner than dipping the brush into a container of ink.

Disposable gloves are needed for this stage.



The resist painted drawing is now covered in ink. Don't go over it once it is all covered.



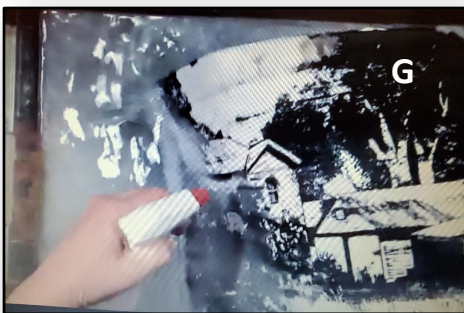
Drying the ink layer with a hair dryer.



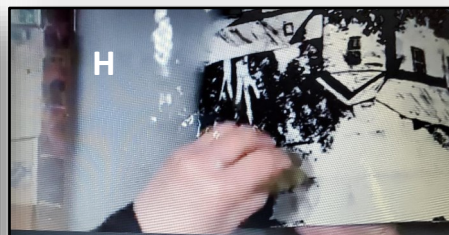
Anne usually uses her utility sink at home but for the demo she had a large plastic storage bin which she filled with water.



The gouache painting is then submerged in the water and swished around to remove the ink and gouache /watercolour mix. The black ink remains on the parts of the paper that were not painted with the gouache/watercolour mix.



If any of the layers are stubborn it helps to use a spritz with a blast from a recycled spray bottle (cleaned).



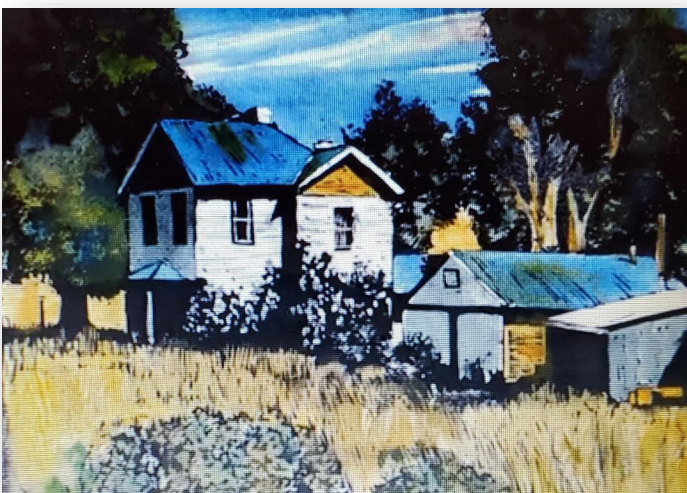
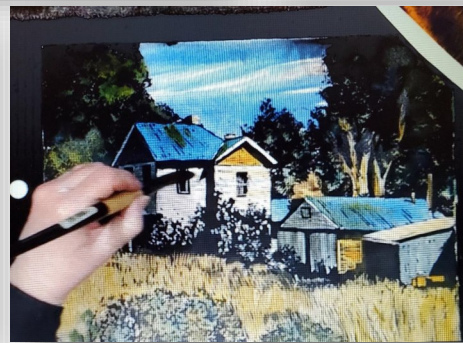
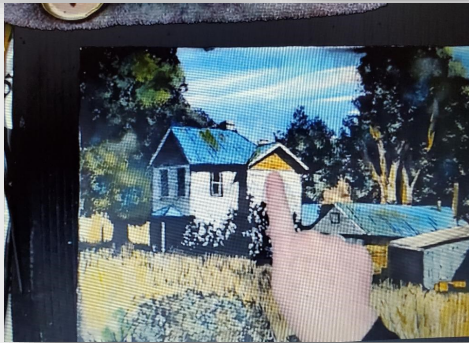
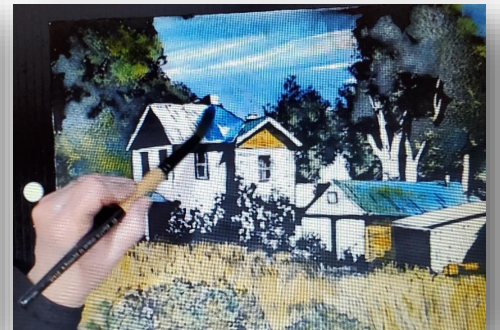
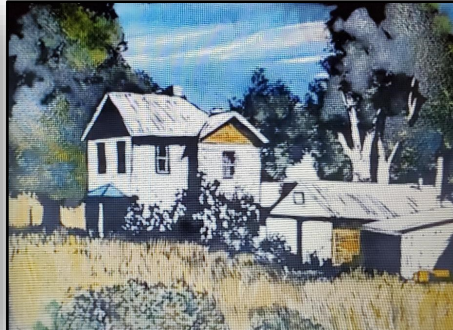
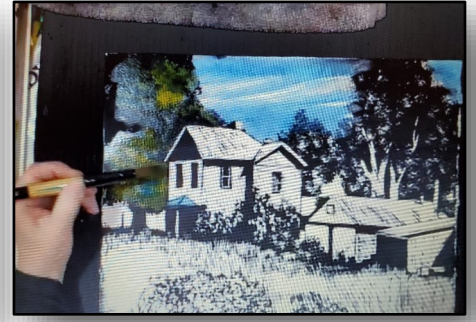
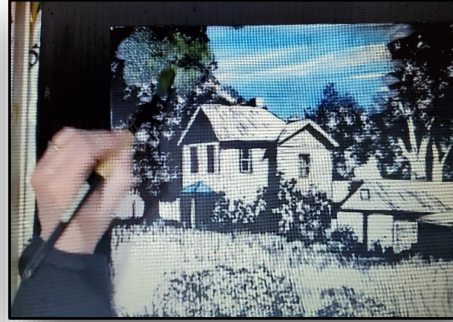
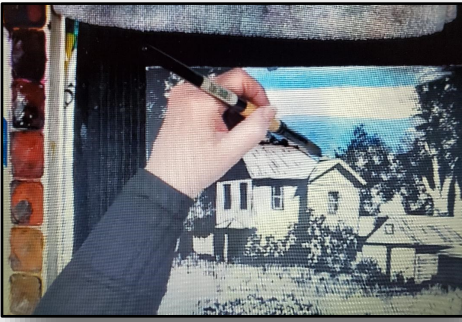
Fingernails help too.



Once all the residue ink and gouache/watercolour mix is washed off the painting is dried with a roll of paper towel which soaks up the residue

At right is the subject now ready for colour.





Anne's painting showing how the areas of ink give a dramatic feel to the painting. The complimentary colours blue and orange work well together

Referencing her photo Anne decided to change the angle of the clouds from horizontal to oblique which gives the image more dynamism and counteracts the horizontal lines in the subject.. She particularly likes the orange colour she used on the house and the outbuilding. This colour was repeated in among the grasses in the foreground. The texture left in the tree at left was given a dusting of green mixed with the orange and the deep shadows in the eves of the house and the outbuildings give the painting strength and drama.

Our thanks to Anne Breckon for a fascinating demonstration of a very cool technique.

We also thank Anne for her donation of her fee to our SSWRAS Scholarship Award fund. Anne is in charge of the scholarship program for the New Westminster Watercolour Society and she said that it was most satisfying to help students. She loves to hear the reaction of a student when they get a call to say they have been awarded the scholarship.

Store Services

- Free prescription delivery anywhere.
- Free blister packaging
 - Travel vaccinations.
- Easy prescription transfer.
 - ask your Live Well Pharmacist.
- Seniors' Day Mondays 15% of everything except prescriptions.
- Fast, friendly, professional service.
- Medication reviews - Compounding Services.
- Free blood pressure readings & blood sugar testing



PHARMASAVE

Pharmasave 135th & 16th

13585 16th Avenue, Surrey

Phone: 604.385.1175

Fax: 604.385.1177

Email: pharmasave021@shaw.ca

Hours

Monday to Friday: 9am-6pm

Saturday: 10am-4pm

Sunday & Holidays: 10am-2pm


\$10 OFF

your next \$30 purchase

Valid only at Pharmasave 135th & 16th on regular priced items. Excludes prescriptions, pharmacy services, codeine products, phone & gift cards, lottery, stamps, transit tickets passes & tobacco (where applicable). Other exclusions may apply. One coupon per customer. Cannot be combined with any other offers.

Expires Dec. 31, 2021

The Gallery Art Supplies & Framing



15134 North Bluff Rd.

Jessica Theriault

White Rock, BC

Owner/Operator

604-531-8226

tonisframeup@shaw.ca

**Show your SSWRAS membership card
for a 10% discount**

Mind And Matter Art Gallery

13743 - 16th Ave

Surrey, BC Phone: (604) 536-6460

Paintings, pottery, sculpture, etc...

Website: www.mindandmatterart.com

Open Daily 12 - 6 P.M.

**This space is available
to promote your company or business**

For details contact

newsletter@artsociety.ca

Bonnie Moy

Cooper Real Estate Group
HomeLife Benchmark Realty Corp.
#1 1920 152nd Street
White Rock, B.C. V4A 4N6
Tel: (604) 351-8387

Fax: (604) 531-8114

Toll Free: 1.800-521-9666

Email: bonniemoy@shaw.ca

Websites: www.bonniemoy.com

www.cooperhomes.ca

Professional of the Year 2014 John Armeneau Award Recipient



PHONE: 604.531.1111 | EMAIL: RandyCooper@shaw.ca | WEB: CooperHomes.ca