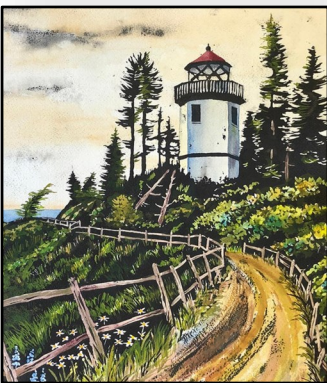


**Our next Zoom meeting will be March 8th.  
Our guest artist will be Ann Breckon.  
Ann will be demonstrating 'Gouache Resist'**



*"I've been playing around with a technique called Gouache Resist and find the results exciting and unique. The process begins with painting white gouache over all parts of the painting where you will be adding colour, followed by bravely painting the paper entirely with black ink. Rinsing the painting in water removes the gouache, leaving behind a striking background and interesting textures. Adding colour can be done while the painting is wet and details added"*



Ann Breckon began watercolour study in 1982 as a break from tending her infant twins, but art in many other forms has always been an important part of her life. She spent hours sketching as a child, and benefitted from the influence of parents who involved the whole family in a variety of artistic activities,

sometimes leaning towards turning the home into a ceramics shop. Ann continued to sketch for many years in pencil and ink, but the watercolour classes were a revelation: "Being introduced to watercolours was thrilling, finally showing me how to pour colour into the sketches I had done for so long." Watercolours allow Ann to combine her passions for colour and nature as she paints bright and realistic florals that jump off the paper, intricate still lifes, moving portraits, animals, cityscapes, seascapes, detailed close-ups and wonderful landscapes. Refusing to be constrained to one subject, Ann thrives on the challenge of a wide range of painting themes.

Beginner Watercolour was the only class being taught at the local community college, so Ann continued being a "beginner" for more than two years. Aside from those classes she has never studied formally, saying, "I learn from every book I read, every painting I study, from my artist friends, at the demonstrations held at society meetings, and from the students in my classes. Every

painting I do has something new to teach me. The adventure never ends."

Raised on the west coast, Ann is the mother of six children and holds a degree in cello performance from the University of Oregon. She has also lived in Washington D.C. and Omaha, Nebraska. Ann decided to seriously focus on her art in the Fall of 1993. Her art was readily accepted into local galleries and she has participated in numerous solo and group shows. Her paintings have been displayed in the Frye Art Museum in Seattle, and have been included in many local and national exhibitions, winning many awards. She is currently a signature member of both the National Watercolor Society of America and the Northwest Watercolor Society, holds membership in the American Watercolor Society, the Transparent Watercolor Society of America and the Eastside Association of Fine Arts. Ann also juried into the Women Painters of Washington where she served two years as president and was honored with Life Membership in 2011. A popular and experienced teacher, she offers regular classes, workshops and demonstrations throughout the Seattle area. Her art is held in personal, corporate, and U.S. Air Force collections.

*"While appreciating many styles of art, I experience a strong personal fascination with the preciseness, clarity and technical ability shown in realistic art. I am also very sensitive to the impacts stress, ugliness, and violence have on our society today. My purpose in painting is to exalt in the best of the world's offerings, to capture a small amount of beauty and bring it into focus. Watercolours move with a mind of their own sometimes, providing an endless set of surprises and challenges and a feeling of life as you work with them. The glowing results are exciting and I love having an opportunity to share this with others."*



## SSWRAS EXECUTIVE AND COMMITTEE CHAIRS

<b>President</b>	Peter Klemm	president@artsociety.ca
<b>Past President</b>	Nancy Grigsby	
<b>Vice President</b>	Angelo Morrisey	v-p@artsociety.ca
<b>Treasurer</b>	Veronica Newell	treasurer@artsociety.ca
<b>Co-Secretary</b>	Wendy Gust	secretary@artsociety.ca
<b>Co-Secretary</b>	Sandy Gagnon	secretary@artsociety.ca
<b>Membership Coordinator</b>	Lori Chalmers	membership@artsociety.ca
<b>Art Show Coordinator</b>	Jess Rice	artshows@artsociety.ca
<b>Newsletter</b>	Georgina Johnstone	newsletter@artsociety.ca
<b>Communications</b>	Linda Long	communications@artsociety.ca
<b>Assistant Treasurer</b>	Bonnie Mathie	
<b>Advertising &amp; Publicity</b>	Lynn Robinson	advertising@artsociety.ca
<b>Assistant Art Show Coordinator</b>	Laurie Ruppel	
<b>Plein Air Coordinator</b>	Sheryl Walker	pleinair@artsociety.ca
<b>Program Coordinator</b>	Carole Milne	programs@artsociety.ca
<b>Webmaster</b>		website@artsociety.ca
<b>Weekend Workshops</b>	Sarah Dolling	workshops@artsociety.ca
<b>Thursday Night Classes Coordinator</b>	Elizabeth Peacock, Charlene Cumberland	thursdayclasses@artsociety.ca
<b>Thursday Night Monitors (Non-elected)</b>	Pat Wolczuk, Tracy Suzuki, Nancy Grigsby	
<b>Open Juried Show Coordinator</b>	Veronica Davies	
<b>Historian</b>	Pat Vickers	
<b>Paint-Out Retreat Coordinator</b>	Alyson Thorpe (Non-elected position: Nancy Grigsby, Assist.)	
<b>Members-at-Large</b>	Adam Lipschultz, Violet Smythe, June Bloye, Karen Huckell, Pamela Orth	
<b>A/V Team Coordinator</b>	Glen Roy, Dan Strathdee, Dennis Boos	
<b>Small Group Shows</b>	Mindy Hardiman & Shelly Kent-Snowsell	
<b>Meeting Greeters</b>	Adam Lipschultz & Lois Harte	
<b>Library</b>	Audrey Bakewell & Sandra Tomchuk	
<b>Nominating Committee</b>	President & members-at-large (at President's discretion)	
<b>Outside Venues</b>	The Playhouse: Linda Hilts & Lynne Adams Peninsula Medical: Cheryl Bodnar & Karen Huckell Mother Hubbard's: Linda Morris & Violet Smythe	
<b>Refreshments</b>	Reet Herder	
<b>Social Committee</b>	Margo Yee & Barb Mitchell	
<b>Sunshine</b>	Drena Hambrook	
<b>Workshop and Thursday Night Classes</b>	<b>'Monitors'</b> Nancy Grigsby, Pat Wolczuk, Tracy Suzuki.	

**Rachel Ruysch** was born in The Hague, 3 June 1664 and died in Amsterdam, 12 October 1750.



She was a Dutch still-life painter from the Northern Netherlands.



She specialized in flowers, inventing her own style and achieving international fame in her lifetime. Due to a long and successful career that spanned over six decades, she became the best documented woman painter of the Dutch Golden Age, being followed by Jan van Huysum, who took flower painting to another degree of popularity.



**Winners of the February Art Challenge.  
'BEST FOOT FORWARD'**



**1ST PLACE**  
THIS FOOT WAS MADE  
FOR SCRATCHING  
Laurie Rupell



**2ND PLACE**  
BEST FOOT FORWARD  
PENGUIN  
Catherine Brown



**3RD PLACE**  
BEST FOOT FORWARD  
CONVERSE  
Sarah Dolling

Congratulations and well done ladies!

**Sheila Leeder Memorial Art Challenge**

**Art Challenge:** Did you notice the change? This time our challenge is for 'art', not just painting. We're calling for art in a more general sense.

For the April challenge, 'Spring has Sprung', we are opening up the challenge to include all media. So, this might include wire sculpture, stained glass, clay sculpture, fabric art etc. Be creative, make something new! Think ART.

**NB. To keep the voting fair do not sign your work on the front or anywhere that will be prominent on your artwork.**

~ June Bloye Art Challenge co-ordinator.

Members may enter one piece of art based on this theme via the Society website under 'Members'. There are no size or medium restrictions at this time.

You may vote for your 3 favourites during the **5 days BEFORE** the monthly meeting. **Voting ends at 6 pm on the day BEFORE** the meeting.

No member should vote more than one time for their own painting. Second or third votes will not be counted.

The results will be announced at the monthly meeting after votes are counted and prizes will be awarded in due course.



## Plein Air with Jess Rice—May 1 and May 2, 2021



Have you thought about joining the Art Society's Plein Air group who meet weekly during the summer months? Or have you always wanted to learn how to paint outside (plein air), and try a new technique? Join Jess for a weekend filled with plein air painting.

During this workshop Jess will show you how to gear up for plein air, choosing your location to paint, and subject matter. We will work on a quick value sketch and then creating a line drawing. We will also be working on blocking in, adjusting and then putting in the final touches of your painting. Jess will be working in both watercolour and acrylics.

**Bring your own lunch.**

**Dates: Saturday May 1 and Sunday May 2.**

**Times: 10 AM to 3PM**

**Location: 2 different out door locations—rain or shine.**

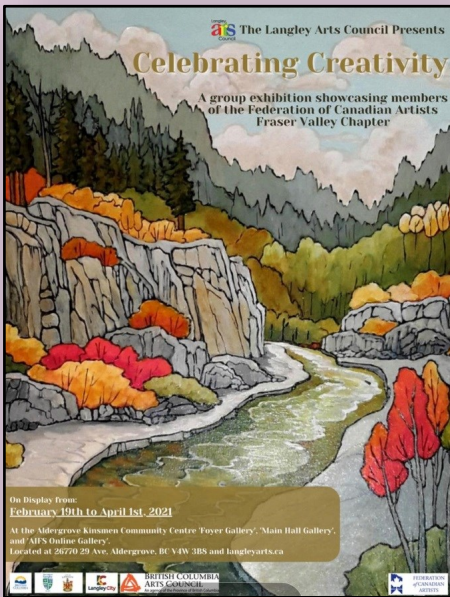
**Cost: \$140 member price (\$165 non-member price).**

**Total number of spots: 15**

### **Jess Rice Artist Biography, 2020**

Jess Rice has been a watercolour artist for the past 25 years. He has always been drawn to the picturesque West Coast and paints many of the beautiful scenes. Currently he is the Art Show Coordinator for the South Surrey and White Rock Art Society and Co-Coordinator for the Peninsula Art Tour. Jess lives in White Rock with his partner Angelo who also is an artist. Using the pouring method to paint many of his watercolours Jess creates rich dynamic paintings that hang in many homes locally and internationally.

# Tah-Dah! & Covid, Shmovid! What Have You Been Working On?



**FALL FLAIR**  
Acrylic on canvas  
Gwen Murphy



**BEACH MEMORIES**  
Acrylic on canvas  
Veronica Newell

Honorable Mentions went to Veronica Newell for 'Beach Memories' and Gwen Murphy for 'Fall Flair'. 'Fall Flair' also appeared on the 'Celebrating Creativity' exhibition poster. Veronica had two other paintings in the show- 'Forward' and 'Resilience'. She also has 'Tree of Wisdom' in the FCA's 'Artists' Choice 2021' exhibition.



**FORWARD**  
Veronica Newell



**RESILIENCE**  
Veronica Newell



**TREE OF WISDOM 18" x 24"**  
Veronica Newell  
Accepted into the FCA's Artists' Choice 2021



Member Laura Barnes had a show of her work at the Gallery Art Supply and Framing store in Central Plaza for the month of February





Life at the beach supplies the theme for the two upcoming featured artists for March at The Gallery, Central Plaza.

While Sandra Tomchuck and Gail Nesimiuk usually work independently, the long-time friends have been known to team up to paint an occasional series—and the collaboration always seems to inspire a different style of painting for both.

Sandra said that instead of displaying, side-by-side, paintings done by each artist, they literally paint each canvas as a team.

Source: *Peace Arch News*



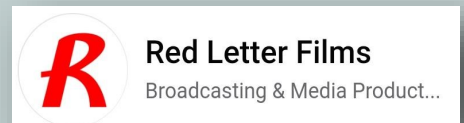
[www.sylviepeltier.com](http://www.sylviepeltier.com)

Member Sylvie Peltier will be having a solo show at the French Cultural Centre, March 11 to April 22. The centre is located at **1551 W 7th Avenue, Vancouver** and is open every day except Sundays. The exhibition is called **'Aquatika'**

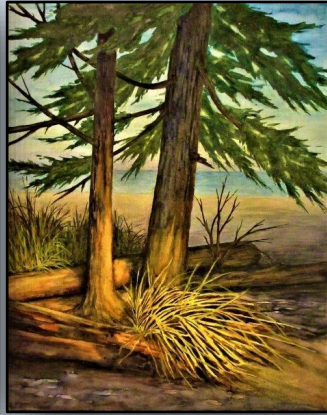
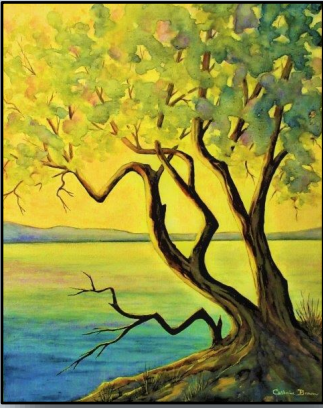
Recently Sylvie has been experimenting with the interplay of lily pads, reeds and water, and the abstract motifs they create. 'Aquatika' will feature 12 of her paintings.

Sylvie is not only an accomplished painter. She also has another outlet for her artistic talents— she has her own film company!

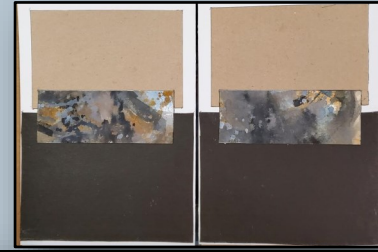
When Sylvie founded Red Letter Films, she worked primarily as a documentary director. After a while she was bitten by the Producer bug and with a number of talented collaborators, she moved on to more ambitious projects from docudrama to blue chip documentaries.



[www.Redletterfilms.com](http://www.Redletterfilms.com)

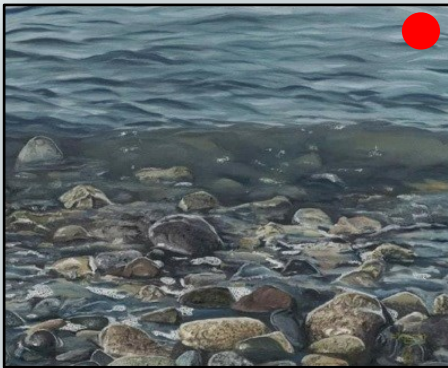


A collection of Catherine Brown's watercolour paintings will be on display on the art wall in the White Rock Library, 15342 Buena Vista Avenue, White Rock for the month of March.



COVID COLLECTION TRIPTYCH  
8" x 33"

Top: Triptych folded closed.  
Below: Unfolded triptych displaying mini abstracts.  
Watercolour on watercolour paper  
Body/Decoration: Bristol paper and various found papers.  
Georgina Johnstone



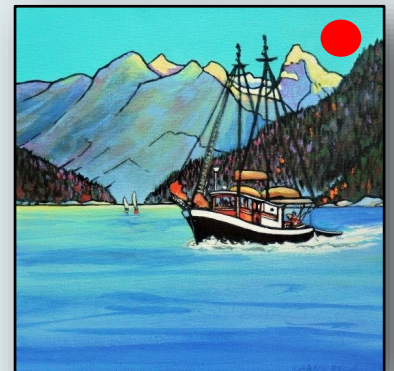
*"Stones of many colours and textures that have been made smooth by thousands of years of small waves lapping over them."*

ROCKS  
16" x 20"  
Oil on canvas.  
Peter Klemm

Our President Peter Klemm was pleasantly surprised when his painting 'Rocks' was sold even before the FCA's 2021 Artists' Choice exhibition officially opened.

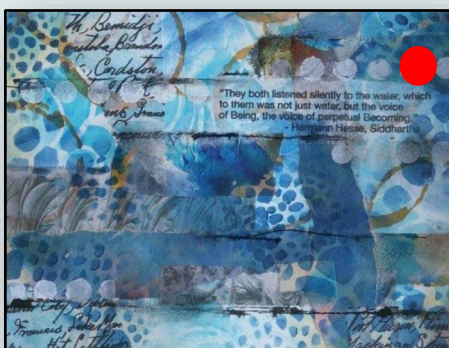
**SOLD!**

*"This painting is cruising off to its new home on Vancouver Island!"*  
**Catherine Robertson**



CONVERTED TRAWLER,  
DESOLATION SOUND, BC  
Acrylic on canvas  
Catherine Robertson

**Congratulations everybody!**



BECOMING  
5" x 7"

Acrylic/mixed media on paper  
Nancy Grigsby

*"Painted while on my Long Beach get-away and taking inspiration from the ocean waves, 'Becoming' is going to a new home."*

**Nancy Grigsby**



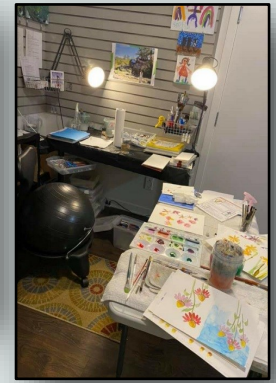
DANCE HALL GIRLS  
Acrylic on canvas  
Linda Morris

*"My mind is all over the place right now. I've never sold 2 paintings in a row so this is a nice surprise. ('Winter Friends' was sold previously).*

*Dance Hall Girls' sold even before the FCA Fraser Valley chapter show, 'Celebrating Creativity', opened on February 19th! My first red dot in the Federation, so I'm pretty excited right now."*  
**Linda Morris**

## Where Do You Create?

*"My messy studio. I'm working on Violet Smythe's fabulous flat brush flowers. You can also see a few views of my acrylics from Tony O'Regan's 'Many Shapes of Water'. I'm really enjoying the Zoom classes with Violet and Tony. I feel fortunate to have this studio space to work in."* ~Tammy Bailey



*"Always seeking a larger space I rented a studio at Alexander House. Because of COVID I decided to organize my previous studio, which happens to be a spare bedroom. Now uncluttered, organized, surrounded with things I love, no excuses, I shall paint on. I know artists have created masterpieces with a lot less space."* ~ Drena Hambrook

## Irma Boom —'The Queen of Books'



Irma Boom was born in Lochem, The Netherlands in 1960. Her venture into book design came by accident while pursuing painting at the AKI Academy of Art & Design. She had walked into a lecture on book design, and so profound was its impact that it inspired her to drop

painting and join the graphic design department. Here she found a love for Swiss typography and began developing her creative voice.

During this time she interned at various offices including the Dutch Government Publishing and Printing Office in The Hague, Studio Dumbar, and The Dutch Television (NOS) design department. She had applied to intern at Total Design in Amsterdam but had been rejected for mixing too many typefaces. Her work was far too experimental for a firm that was used to strict typographic convention.

Boom experienced her first job as both an editor and designer during her time at the Dutch Government Publishing and Printing Office in The Hague. It was here that she was noticed by Ootje Oxenaar, a designer of Dutch banknotes, who invited her to design two catalogues for special edition postage stamps between the years 1987 to 1988. To him, she was the 'designer of the crazy ads'.

The annual Dutch Postage Stamp books were considered to be a prestigious opportunity. Boom's experimental style was evident in this publication, through the rich layers of information and imagery. She structured the book in a Japanese style binding and had text crossing multiple pages with

printed folds and translucent paper. Though well received by Oxenaar, this project drew a lot of public outcry for being overtly experimental. Boom received much hate mail, particularly from stamp collectors.

However, this controversy brought her name onto the public stage and established her name as a designer.

Upon graduating during the 1980s, Boom decided to return to the Dutch Government Publishing and Printing Office. It gave her the opportunity to jump right into the shoes of a designer rather than an assistant designer. During this time she became acquainted with Paul Fentener van Vlissingen who would invite her to design the *SHV Think Book*—a book which eventually elevated her as a design star. Boom founded the Irma Boom Office in Amsterdam in 1991. She continued to tackle projects nationally and internationally. Since 1992, she has lectured and given workshops worldwide. Her work has been shown at numerous international exhibitions, including her own solo exhibition in Amsterdam in 2011.





## OUR GUEST ARTIST FOR FEBRUARY WAS EMILIE VANTUZ.

### PALETTE KNIFE PAINTING WITH OILS



#### EMILIE'S TOOLS

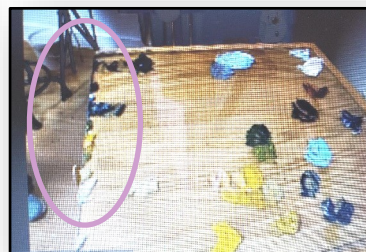
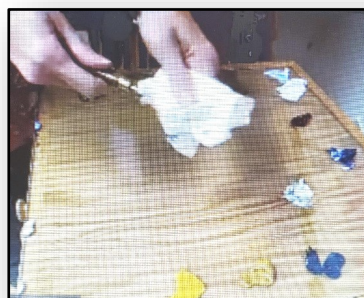
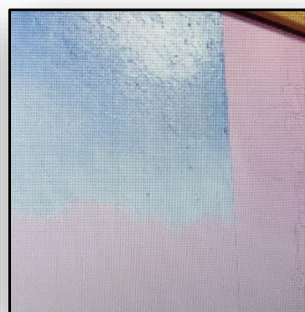
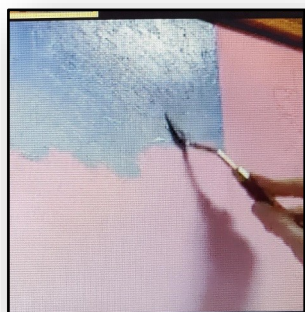
Palette knives: Deserres #2901 and #2914  
Gamblin Oils



#### EMILIE'S COLOURS

Titanium White  
Cadmium Yellow Med.  
Yellow Ochre  
Alizarin Permanent  
French Ultramarine  
Phthalo blue-green  
Chromatic Black

Emilie's demonstration consisted of 4 parts.  
**Sky with power lines, Streetlight, Vehicle + reflections on the street and a bucket of flowers**

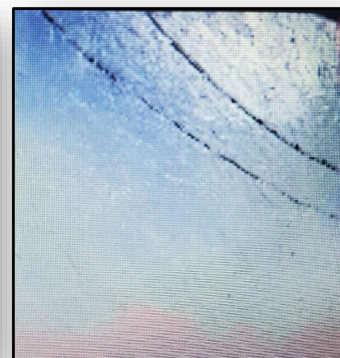
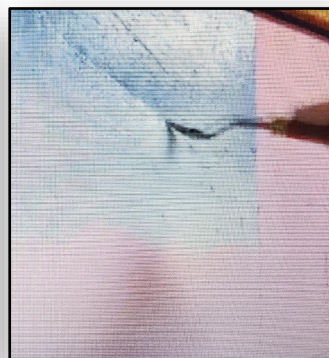
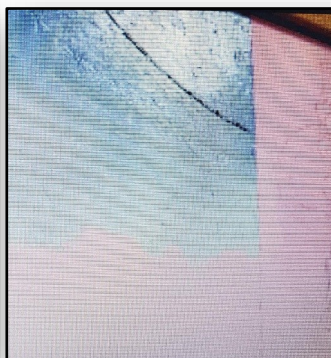
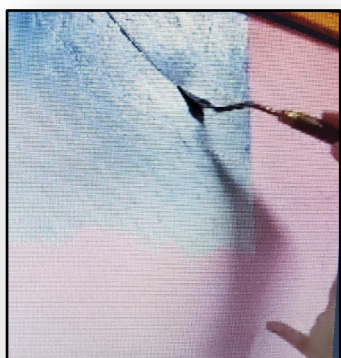


Although Emilie uses a limited palette of colours she has a large palette (glass) with enough space for mixing. When Emilie changes colours or wants to mix new ones she scrapes off any paint left on her knife onto the fore-edge of her palette (at left in the bottom photo.) Emilie assured us that the scraped-off paint won't be wasted.

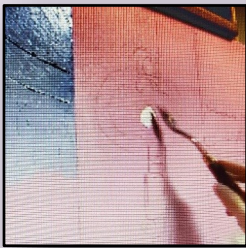
Emilie first showed how she applies paint to large, flat areas of a canvas such as the sky (as here) with her palette knife. She picks up paint from her palette with a scooping motion and then working from the right side of the knife she applies the paint in small movements.

Emilie primes her canvas with a pink gesso. She likes the warm colour and the way that it glints through in areas of her finished paintings.

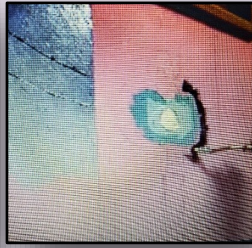
[www.emilievantuz.com](http://www.emilievantuz.com)



Emilie works from photographs when painting her cityscapes. She first draws the shapes on her pink canvas. She demonstrated her technique for creating 'power lines' in the skies of these cityscapes. She draws them in with paint (for dark night skies she uses a mixed light grey and a dark blue for daytime skies). She scoops up colour and very carefully drags the side then the point of her angled palette knife on the canvas to create an arc.



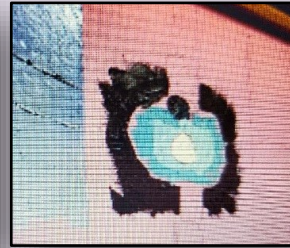
Emilie showed how to paint the glow of the green light of a traffic light. First a blob of white mixed with a tiny touch of phthalo blue/green.



Using an 'outward' motion of the knife she adds concentric circles of phthalo blue/ green and white mix,.



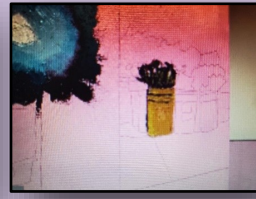
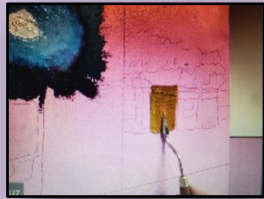
Filling in the night sky with the same outward motion. She uses a mix of dark purple, ultra marine and black.



She leaves a blank space under the light to allow for painting in the post of the traffic light.



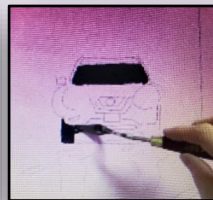
Emilie blends the colours of the green light with soft outward 'wavy' strokes of the knife. "It takes practice to blend."



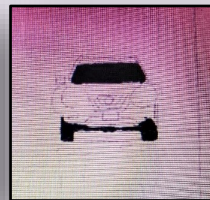
Using various motions of her palette knife Emilie shows how she paints in the drawn shape of a flower bucket (she uses pencil to draw in her subject.) She then adds leaves and flowers with the tip of the knife, dabbing and flicking up at the end of her stroke to form the shape.



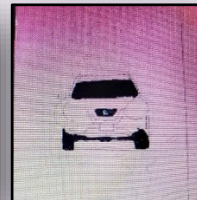
Emilie first adds dark areas in dark purple.



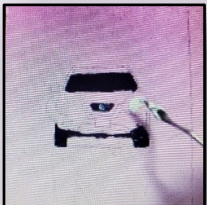
Large areas are painted first.



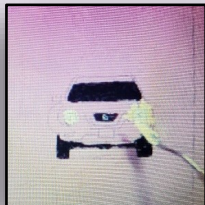
The windshield, tires and underneath the car are done



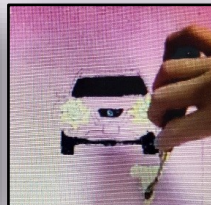
The grill is added.



Headlights are painted in a mix of light yellow and white



Headlights are given a 'halo'.



Headlights are reflected on the road's surface.



Shadow under the car and colour on roof has been added.



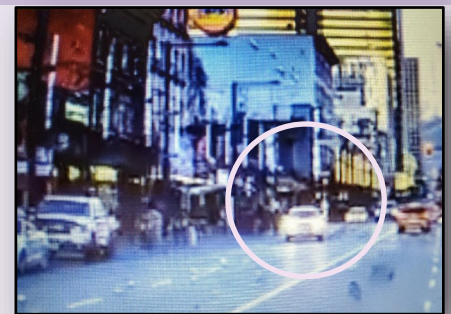
Colour of the street in shadow is added.



More road colour is added



Colour of headlight reflection is blended in zig zag to show wet road surface.



Emilie paints a car from a reference photo. She has already drawn the image in pencil on the canvas.

### Emilie's Tips:

- She likes Desseres knives for their flexibility and nice wooden handles.
- You have more control using a smaller knife.
- It takes practice to blend with a palette knife.
- Emilie has found that a limited palette makes painting easier.
- Emilie does not usually use thinner with oil.
- If using acrylics you may need to mix them with a thickener, or use 'heavy body' acrylics.
- Alizarin Permanent is better than Alizarin Crimson.

## Store Services

- Free prescription delivery anywhere.
- Free blister packaging
  - Travel vaccinations.
- Easy prescription transfer.
  - ask your Live Well Pharmacist.
- Seniors' Day Mondays 15% of everything except prescriptions.
- Fast, friendly, professional service.
- Medication reviews - Compounding Services.
- Free blood pressure readings & blood sugar testing



## PHARMASAVE

Pharmasave 135th & 16th

13585 16th Avenue, Surrey

Phone: 604.385.1175

Fax: 604.385.1177

Email: [pharmasave021@shaw.ca](mailto:pharmasave021@shaw.ca)

### Hours

Monday to Friday: 9am-6pm

Saturday: 10am-4pm

Sunday & Holidays: 10am-2pm

  
**\$10 OFF**

your next \$30 purchase

Valid only at Pharmasave 135th & 16th on regular priced items. Excludes prescriptions, pharmacy services, codeine products, phone & gift cards, lottery, stamps, transit tickets passes & tobacco (where applicable). Other exclusions may apply. One coupon per customer. Cannot be combined with any other offers.

Expires Dec. 31, 2020

This space is available  
to promote your company or business

For details contact

[newsletter@artsociety.ca](mailto:newsletter@artsociety.ca)

## The Gallery Art Supplies & Framing



15134 North Bluff Rd.

Jessica Theriault

White Rock, BC

Owner/Operator

604-531-8226

[tonisframeup@shaw.ca](mailto:tonisframeup@shaw.ca)

Show your SSWRAS membership card  
for a 10% discount

## Mind And Matter Art Gallery

13743 - 16th Ave

Surrey, BC Phone: (604) 536-6460

Paintings, pottery, sculpture, etc...

Website: [www.mindandmatterart.com](http://www.mindandmatterart.com)

Open Daily 12 - 6 P.M.

### Bonnie Moy

Cooper Real Estate Group  
HomeLife Benchmark Realty Corp.  
#1 1920 152nd Street  
White Rock, B.C. V4A 4N6  
Tel: (604) 351-8387

Fax: (604) 531-8114

Toll Free: 1.800-521-9666

Email: [bonniemoy@shaw.ca](mailto:bonniemoy@shaw.ca)

Websites: [www.bonniemoy.com](http://www.bonniemoy.com)

[www.cooperhomes.ca](http://www.cooperhomes.ca)

Professional of the Year 2014 John Armeneau Award Recipient



PHONE: 604.531.1111 | EMAIL: [RandyCooper@shaw.ca](mailto:RandyCooper@shaw.ca) | WEB: [CooperHomes.ca](http://CooperHomes.ca)