

**Our next Zoom meeting will be May 10th. This meeting will include our AGM.**

**Our guest artist will be Jeff Wilson.**



Jeff will be working on a piece in process, building on prior surface preparation, sketching and initial layering. The demonstration will combine hands-on brushwork, colour mixing and layering with a discussion of subject, compo-

Jeff Wilson grew up in Edinburgh, Scotland and trained as a structural geologist. He worked in mineral exploration around the world, settling in Vancouver in 2004, and took art classes at Emily Carr University, kick-starting a hobby that transitioned to a full-time art practice in 2013.

Jeff's painting collections have exhibited widely in public galleries in BC, Alberta and WA State. Highlights include the art gallery of St. Alberts, The Langham, Okotoks Art Gallery, ACT Gallery, Bellingham City Hall and the University of Washington Law School.

He has received a number of awards, including Finalist in the inaugural Saltspring National Art Prize, appeared in the recent "Landscape Artist of the Year Canada" TV show, and received two downtown Eastside Small Arts Grants from the Vancouver Foundation. Jeff has completed residencies at the Booth in Shetland, Parks Canada's Art in the Park and the Wallace Stegner House.

His work is held in numerous private, public and corporate collections, including Alexco Resource Corp., BC Children's Hospital, Lion's Gate Foundation, Union Gospel Mission, Vancity Credit Union, VGH Foundation and Victoria Gold Corp.



One of a series of works depicting the Downtown East Side.



One of a series of paintings depicting that most Canadian icon, the graffiti-tagged grain-car, well known and loved in towns large and small, across the country.

Jeff Wilson is based out of Portside Studios in Vancouver.

## SSWRAS EXECUTIVE AND COMMITTEE CHAIRS

<b>President</b>	Peter Klemm	president@artsociety.ca
<b>Past President</b>	Nancy Grigsby	
<b>Vice President</b>	Angelo Morrisey	v-p@artsociety.ca
<b>Treasurer</b>	Veronica Newell	treasurer@artsociety.ca
<b>Co-Secretary</b>	Wendy Gust	secretary@artsociety.ca
<b>Co-Secretary</b>	Sandy Gagnon	secretary@artsociety.ca
<b>Membership Coordinator</b>	Lori Chalmers	membership@artsociety.ca
<b>Art Show Coordinator</b>	Jess Rice	artshows@artsociety.ca
<b>Newsletter</b>	Georgina Johnstone	newsletter@artsociety.ca
<b>Communications</b>	Linda Long	communications@artsociety.ca
<b>Assistant Treasurer</b>	Bonnie Mathie	
<b>Advertising &amp; Publicity</b>	Lynn Robinson	advertising@artsociety.ca
<b>Assistant Art Show Coordinator</b>	Laurie Ruppel	
<b>Plein Air Coordinator</b>	Sheryl Walker	pleinair@artsociety.ca
<b>Program Coordinator</b>	Violet Smythe	programs@artsociety.ca
<b>Webmaster</b>	Jess Rice	website@artsociety.ca
<b>Weekend Workshops</b>	Sarah Dolling	workshops@artsociety.ca
<b>Thursday Night Classes Coordinator</b>	Elizabeth Peacock, Charlene Cumberland	thursdayclasses@artsociety.ca
<b>Thursday Night Monitors (Non-elected)</b>	Pat Wolczuk, Tracy Suzuki, Nancy Grigsby	
<b>Open Juried Show Coordinator</b>	Veronica Davies	
<b>Historian</b>	Pat Vickers	
<b>Paint-Out Retreat Coordinator</b>	Alyson Thorpe (Non-elected position: Nancy Grigsby, Assist.)	
<b>Members-at-Large</b>	Adam Lipschultz, Violet Smythe, June Bloye, Karen Huckell, Pamela Orth	
<b>A/V Team Coordinator</b>	Dan Strathdee, Dennis Boos	
<b>Small Group Shows</b>	Mindy Hardiman & Shelly Kent-Snowsell	
<b>Meeting Greeters</b>	Adam Lipschultz & Lois Harte	
<b>Library</b>	Audrey Bakewell & Sandra Tomchuk	
<b>Nominating Committee</b>	President & members-at-large (at President's discretion)	
<b>Outside Venues</b>		
	The Playhouse:	Linda Hilts & Lynne Adams
	Peninsula Medical:	Cheryl Bodnar & Karen Huckell
	Mother Hubbard's:	Linda Morris & Violet Smythe
<b>Refreshments</b>	Reet Herder	
<b>Social Committee</b>	Margo Yee & Barb Mitchell	
<b>Sunshine</b>	Drena Hambrook	
<b>Workshop and Thursday Night Classes</b>	<b>"Monitors"</b> Nancy Grigsby, Pat Wolczuk, Tracy Suzuki.	

"Art is not a handicraft, it is the transmission of feeling the artist has experienced."

~Leo Tolstoy

"Learn the rules from a pro, so you can break them like an artist."

~Pablo Picasso

"I have already settled it for myself so flattery and criticism go down the same drain and I am quite free."

~Georgia O'Keeffe

"I paint flowers so they will not die."

~Frida Kahlo

"He who works with his hands is a labourer. He who works with his hands and his head is a craftsman. He who works with his hands his head and his heart is an artist."

~Saint Francis of Assisi

"The artist sees what others only catch a glimpse of."

~Leonardo Da Vinci

"If you hear a voice within you saying "You are not a painter", then by all means paint and that voice will be silenced."

~Vincent Van Gogh

## Sheila Leeder Memorial Art Challenge

**Art Challenge:** Did you notice the change? This time our challenge is for 'art', not just painting. We're calling for art in a more general sense.

**The June challenge is 'SUMMER ADVENTURE'.**

The challenge is open to all media. So, this might include wire sculpture, stained glass, clay sculpture, fabric art etc. Be creative, make something new! Think ART.

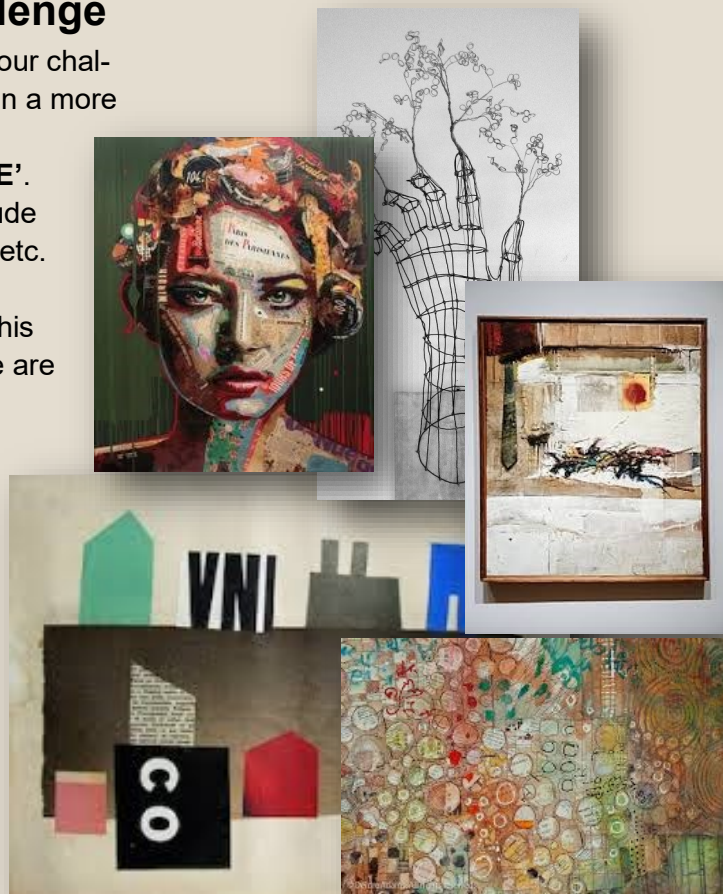
Members may enter one piece of art based on this theme via the Society website under 'Members'. There are no size restrictions at this time.

**NB. To keep the voting fair do not sign your work on the front or anywhere that will be prominent on your artwork.**

**NB: You may vote for your 3 favourites during the 5 days BEFORE the monthly meeting. Voting ends at 6 pm on the day BEFORE the meeting.**

**No member should vote more than one time for their own painting. Second or third votes will not be counted.**

**The results will be announced at the monthly meeting after votes are counted and prizes will be awarded in due course.**



## Sheila Leeder Memorial Art Challenge

### April's 'Spring has Sprung' Painting Challenge Winners

First prize went to Catherine Sheppard for her painting 'Lisianthis'. Second prize went to Pat Vickers for "Tulip Time". There was no third prize given as the remaining paintings all had the same number of votes each. These votes will be carried over to the next challenge.



LISIANTHIS  
Catherine Sheppard



TULIP TIME  
Pat Vickers

## Tah-Dah! & Covid, Shmovid! What Have You Been Working On?

Our Society online show and sale on our website was very successful for a first time around. 7 paintings were sold for a total of \$1500.00 to date and 1000 visitors visited our website to check out the show.

Many thanks to Jess Rice, our Website Coordinator, for setting up the show on our redesigned website.

Thank you to all the volunteers who keep our Society alive. Our May meeting will be our AGM and we'll be asking so please consider volunteering. It's a great way to see how things work!

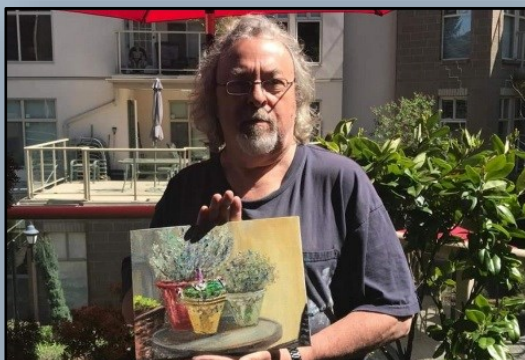
Three of Sylvie Peltier's paintings on show at her recent exhibition at the French Cultural Centre all found good homes.



Sylvie's work explores the richness and complexity of nature, which is so much more than a mountain, a sunset, a forest, or a lake. Nature is dynamic, constantly evolving, advancing or eroding, full of beauty regardless of scale, and everywhere around us. For most people, a sky is blue, a tree is brown and green, a strawberry is red. But when you stop to look and open yourself to what is truly in front of you, it is transformed, and there is infinitely more to see and so much beauty to discover.

Recently she has been experimenting with the interplay of lily pads, reeds, and water and the mysterious abstract motifs they create. Because water can be both a mirror and a window, we can see the lily's stems reaching for the surface, the sky and the trees reflected among them, the shadows of the leaves on the water, and how subtle movements of the water transform our perception and take us into another universe.

*"I sign my paintings Esspé, which is the phonetic expression in French of my initials, SP. An optimist by nature, I love to share a softer and more luminous view of the world. My studio is located in White Rock, British Columbia, a small seaside community with a pier jutting into the ocean and a view of the United States. I enjoy looking at the works of other artists and I find much inspiration in what they do. David Hockney, David T. Alexander, and Peter Doig are currently among my favourite painters."*



Our Society President Peter Klemm's first attempt at plein air painting. "Loving the freedom of expression that this process forces you to employ."



LATE SUMMER, JERICHO PARK, BC.

Catherine Robertson's painting 'Late Sumer, Jericho Park, BC' is off to its new home in sunny California.

*"I'm delighted that it is so loved and I know it has a happy and lovely home."*



HOBBIT HOUSE

Member Linda Morris had a notification that her painting 'Hobbit House' had won the \$50 Opus gift certificate for the 'Inner Worlds' exhibition through Semiahmoo arts.

*"What a lovely surprise"*

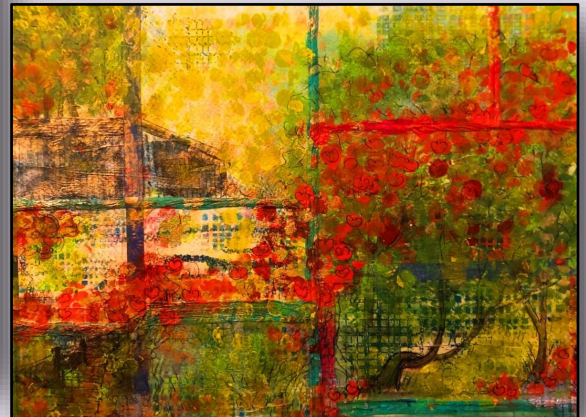


EARTH IN TROUBLE



SPRING IN THE TIME OF PANDEMIC

Society member Susan Perez shares some of her latest work—'Earth in Trouble', 'Spring in the Time of Pandemic' and 'Apple Orchard in my Mind'.



APPLE ORCHARD IN MY MIND

**Congratulations everybody!**

# Selling Your Work on ETSY

Our guest artist for April was Veronica Newell, a Society member and also our Society Treasurer. Veronica showed how we can use Etsy to sell our work online. Etsy is an online market place exclusively for art and crafts. Everything on Etsy has to be made or sold by you. The site has millions of sellers and millions of buyers.



Veronica shared some tips on making your 'shop' look inviting and memorable. You can have an Etsy shop as big or small as you like. You can personalize your shop in many different ways: 'framing' your pieces; adding your bio; grouping items etc. Make your site fun and interesting, this brings buyers back to your 'shop'.

If you have trouble pricing your items choose a price that feels comfortable "not awkward or embarrassing". Look for work similar to yours. Give it a try and see how it goes.

Thank you, Veronica, for a very interesting and informative presentation.

"If people only knew how hard I work to gain my mastery. It wouldn't seem so wonderful at all."  
~Michelangelo.

"As I work at my drawings, day after day, what seemed unattainable before is now gradually becoming possible. Slowly, I'm learning to observe and measure. I don't stand quite so helpless before nature any longer."  
~Vincent Van Gogh.

"Art is never finished, only abandoned."  
~Leonardo Da Vinci

To my mind a picture should be something pleasant, cheerful and pretty. There are too many unpleasant things in life as it is, without creating still more of them."  
~Pierre-Auguste Renoir

"There is no 'must' in art because art is free."  
~Wassily Kandinski

"I started painting as a hobby when I was little. I didn't know I had any talent. I believe talent is just a pursued interest. Anyone can do what I do."  
~Bob Ross.

"Inspiration exists but it has to find you working."  
~Pablo Picasso

"It's not what you look at that matters, it's what you see."  
~Henry David Thoreau.

"Every artist was first an amateur."  
~Ralph Waldo Emerson

"It is only when we are no longer fearful that we begin to create."  
~J. M. W. Turner

"Success is a worn down pencil."  
~Robert Rauschenberg

"The aim of art is to represent not the outward appearance of things, but their inward significance."  
~Aristotle

When I paint, I never think of selling. People fail to understand that we paint in order to experiment and to develop ourselves as we strive for greater heights."  
~Edvard Munch

## Store Services

- Free prescription delivery anywhere.
- Free blister packaging
  - Travel vaccinations.
- Easy prescription transfer.
  - ask your Live Well Pharmacist.
- Seniors' Day Mondays 15% of everything except prescriptions.
- Fast, friendly, professional service.
- Medication reviews - Compounding Services.
- Free blood pressure readings & blood sugar testing



## PHARMASAVE

Pharmasave 135th & 16th

13585 16th Avenue, Surrey

Phone: 604.385.1175

Fax: 604.385.1177

Email: [pharmasave021@shaw.ca](mailto:pharmasave021@shaw.ca)

### Hours

Monday to Friday: 9am-6pm

Saturday: 10am-4pm

Sunday & Holidays: 10am-2pm

  
**\$10 OFF**

your next \$30 purchase

Valid only at Pharmasave 135th & 16th on regular priced items. Excludes prescriptions, pharmacy services, codeine products, phone & gift cards, lottery, stamps, transit tickets passes & tobacco (where applicable). Other exclusions may apply. One coupon per customer. Cannot be combined with any other offers.

Expires Dec. 31, 2021

**This space is available  
to promote your company or business**

**For details contact**

**[newsletter@artsociety.ca](mailto:newsletter@artsociety.ca)**

## The Gallery Art Supplies & Framing



**15134 North Bluff Rd.**

**Jessica Theriault**

**White Rock, BC**

**Owner/Operator**

**604-531-8226**

**[tonisframeup@shaw.ca](mailto:tonisframeup@shaw.ca)**

**Show your SSWRAS membership card**

**for a 10% discount**

## Mind And Matter Art Gallery

**13743 - 16th Ave**

**Surrey, BC Phone: (604) 536-6460**

**Paintings, pottery, sculpture, etc...**

**Website: [www.mindandmatterart.com](http://www.mindandmatterart.com)**

**Open Daily 12 - 6 P.M.**

### Bonnie Moy

Cooper Real Estate Group  
HomeLife Benchmark Realty Corp.  
#1 1920 152nd Street  
White Rock, B.C. V4A 4N6  
Tel: (604) 351-8387

Fax: (604) 531-8114

Toll Free: 1.800-521-9666

Email: [bonniemoy@shaw.ca](mailto:bonniemoy@shaw.ca)

Websites: [www.bonniemoy.com](http://www.bonniemoy.com)

[www.cooperhomes.ca](http://www.cooperhomes.ca)

**Professional of the Year 2014 John Armeneau Award Recipient**



PHONE: 604.531.1111 | EMAIL: [RandyCooper@shaw.ca](mailto:RandyCooper@shaw.ca) | WEB: [CooperHomes.ca](http://CooperHomes.ca)