

THE NEXT ART SOCIETY MEETING WILL BE ON MONDAY NOVEMBER 8TH AT 7PM VIA ZOOM.



Georgina Johnstone will be the demo artist at the meeting on Nov 8. She will be demonstrating how to make concertina/accordion booklets to use up scraps and piec-

es of discarded paintings.

She will also show how to create pieces to cut out and use in your booklets.



## SHEILA LEEDER MEMORIAL CHALLENGE

**\*\*Vote vote vote\*\***

Voting for the **Sheila Leeder Memorial Art Challenge** will be held between **6pm Tuesday November 2** and **6pm Sunday November 7**.

Voting will be online. Please vote for your top 3. An email with instructions and reminders will be sent out to all members

No member should vote more than once for their own painting. Second or third votes will not be counted.

Results and prizes will be announced at the November meeting on **Monday Nov 8**. Prizes will be awarded for 1st, 2nd and 3rd place and photos of the artwork will be published in the next newsletter.

For questions, please contact [info@artsociety](mailto:info@artsociety)

## ABSTRACT PAINTING IN ACRYLIC

The demo artist for the October zoom meeting was SSWRAS member Georgina Johnstone. She demonstrated painting abstracts in acrylics.

To begin her demo, she showed how to use the 'taped off' exercise. This involved dividing a large (22" x 15") piece of student quality watercolour paper (or similar,) into even areas using a pencil. The pencil lines were then covered with painters' tape. The next step was to paint the whole sheet (including the tape) in a free and playful manner.

Georgina then painted at random, covering everything with different colours and brush strokes. When she was done, she put it aside to dry and went on to the second part of her demo.

Using acrylic paint, Georgina began applying colourful brushstrokes on a 12" x 12" canvas. (The canvas had previously been painted with a coat of orange acrylic to cover up the intimidating 'virgin white'.)

As she painted, she explained why, where and how the painting was progressing.



More on Page 9....

## SSWRAS EXECUTIVE AND COMMITTEE CHAIRS

<b>President</b>	Peter Klemm	president@artsociety.ca
<b>Past President</b>	Nancy Grigsby	
<b>Vice President</b>	Angelo Morrisey	v-p@artsociety.ca
<b>Treasurer</b>	Veronica Newell	treasurer@artsociety.ca
<b>Co-Secretary</b>	Wendy Gust	secretary@artsociety.ca
<b>Co-Secretary</b>	?	secretary@artsociety.ca
<b>Membership Coordinator</b>	Lori Chalmers	membership@artsociety.ca
<b>Art Show Coordinator</b>	Laurie Ruppel	artshows@artsociety.ca
<b>Assistant Art Show Coordinator</b>	?	
<b>Newsletter</b>	Caroline Baasch	newsletter@artsociety.ca
<b>Communications</b>	Linda Long	communications@artsociety.ca
<b>Assistant Treasurer</b>	Bonnie Mathie	
<b>Advertising &amp; Publicity</b>	Lynn Robinson	advertising@artsociety.ca
<b>Plein Air Coordinator</b>	Sheryl Walker	pleinair@artsociety.ca
<b>Program Coordinator</b>	Violet Smythe	programs@artsociety.ca
<b>Webmaster</b>	Jess Rice	website@artsociety.ca
<b>Weekend Workshops</b>	Sarah Dolling	workshops@artsociety.ca
<b>Thursday Night Classes Coordinator</b>	?	
	Charlene Cumberland	thursdayclasses@artsociety.ca
<b>Thursday Night Monitors (Non-elected)</b>	Pat Wolczuk, Tracy Suzuki, Violet Smythe	
<b>Open Juried Show Coordinator</b>	?	
<b>Historian</b>	Pat Vickers	
<b>Paint-Out Retreat Coordinator</b>	Alyson Thorpe (Non-elected position: Nancy Grigsby, Assist.)	
<b>The Sheila Leeder</b>		
<b>Memorial Art Challenge</b>	Sarah Dolling	
<b>Members-at-Large</b>	Adam Lipschultz, Violet Smythe, June Bloye, Karen Huckell, Pamela Orth, Sarah Dolling.	
<b>A/V Team Coordinator</b>	Dan Strathdee, Dennis Boos	
<b>Small Group Shows</b>	Mindy Hardiman & Shelly Kent-Snowsell	
<b>Meeting Greeters</b>	Adam Lipschultz & Lois Harte	
<b>Library</b>	Audrey Bakewell & Sandra Tomchuk	
<b>Nominating Committee</b>	President & members-at-large (at President's discretion)	
<b>Outside Venues</b>		
	The Playhouse:	Linda Hilts & Lynne Adams
	Peninsula Medical:	Cheryl Bodnar & Karen Huckell
	Mother Hubbard's:	Lynne Adams & Violet Smythe
<b>Refreshments</b>	Reet Herder	
<b>Social Committee</b>	Margo Yee & Barb Mitchell	
<b>Sunshine</b>	Drena Hambrook	
<b>Workshop and Thursday Night Classes</b>	<b>"Monitors"</b> Nancy Grigsby, Pat Wolczuk, Tracy Suzuki.	

### **\*THE GALLERY CENTRAL PLAZA IS MOVING\***

After 38 years in Central Plaza, The Gallery Central Plaza  
(aka Toni's Frame-up) is moving!

**NOTE: The Gallery will be open at the current location  
until December 24.**

**The new location is #4-15223 Pacific Avenue**

**GRAND RE-OPENING JANUARY 2022**

### **PLEASE NOTE:**

**As of Jan 1 2022, the Gallery Central Plaza (Art and Framing Store) will no longer be able to host wall space to SSWRS artists to hang their work.**

**Thank-you to The Gallery for donating the space and to all the artists who took part over the last 3 years.**

# Tah-Dah & Covid Shmovid! What have you been up to?



MANNING PARK GOLD  
Catherine Robertson  
12 x 12 Acrylic

(Received an Honourable Mention)  
FCA Gallery



SUMMER MEADOW  
FLOWERS  
Catherine Robertson  
10 x 10  
Acrylic



HILLTOP SNOWMAN  
Catherine Robertson  
8 x 10  
Acrylic



**Catherine Robertson's snowman painting - to be featured on a Rogers Chocolates Christmas tin - has been delayed for one more season. She has been told it "will" be out next year. Covid has apparently been the culprit.**

**We can't wait Catherine!**

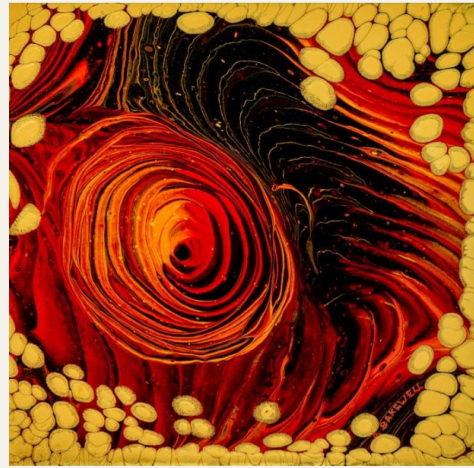


ELLIOT LAKE  
Peter Klemm  
16 x 20 - Oil

"Inspired by the Group of Seven, I followed their route through Algoma last Fall. Along my journey I painted some plain air sketches and gathered reference material for my studio, much like the Group of Seven did 100 years ago. One of my stops was at Elliot Lake in the early morning just as the fishermen were heading out on journeys of their own."

# Tah-Dah & Covid Shmovid! What have you been up to?

The following paintings have been accepted into the FCA Ten Squared show at the FCA Gallery 1241 Cartwright Street, Granville Island. All the paintings are 10 x 10 inches. The show starts on December 13<sup>th</sup> and runs until December 23<sup>rd</sup>.



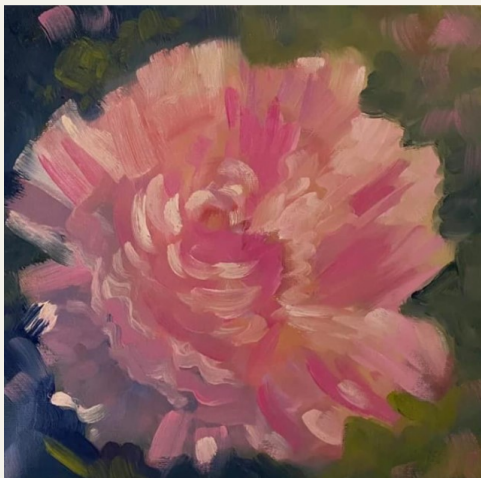
TECTONIC II  
Audrey Bakewell



VINTAGE FLORAL  
Sandra Tomchuk  
Acrylic



HYDRANGEA GOLD  
Sandra Tomchuk  
Acrylic



PINK PEONY  
Cheryl Bodnar  
Oil



MT REVELSTOKE  
Catherine Robertson  
Acrylic

# Tah-Dah & Covid Shmovid! What have you been up to?

## ANIMALIS

These 2 paintings have been accepted in the FCA Exhibition Animalis. The show celebrates all creatures great and small, from wildlife to domestic animals.

Visit Animalis at the FCA Gallery, 1241 Cartwright Street, Granville Island, from November 1 to November 14.



**YIKES! ANOTHER COVID HAIR DAY**

(Left)

Audrey Bakewell

Watercolour

10 x 8

Framed size 16.5 x 1 3.5



**VEIL OF SECRECY**  
(above)

Catherine Sheppard

Pastel - 14 x 18



**GAME TRAIL**

Dawn Chesney-Turner

Watercolour 7.5 x 11



**STILLNESS**

Tammy Bailey 6 x 12

Watercolour/Acrylic pen



Artist: Tammy Bailey

Watercolour 9 x 12

“Autumn is my favourite time of year. I love to walk and see the changing hues in the trees and .....fallen leaves.”

# WHAT'S ON...in and around the community

SPORES

Nancy Grigsby

Mixed media on  
paper

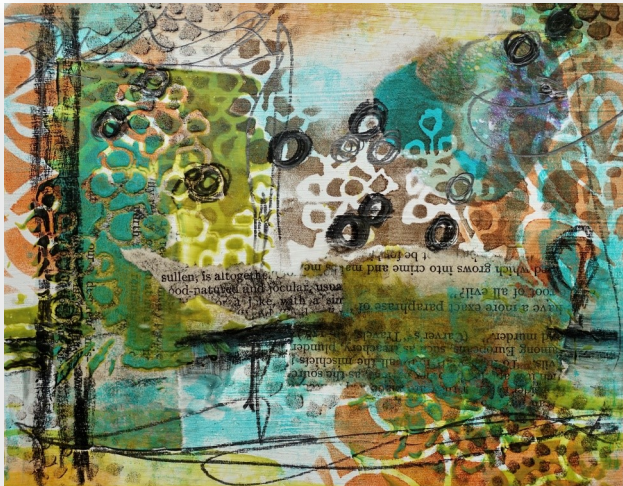
10 x 8



These two paintings by Nancy Grigsby have been accepted into the Skagit Artists Fall Juried Show in Skagit County, Washington.

The Exhibition will be hosted by Christianson's Nursery in La Conner, Washington, from Nov 5-7.

There is an opening reception on Fri Nov 5 from 1-4pm.



A ZEBRA AND A GIRAFFE WALK INTO A BAR

Nancy Grigsby

Mixed media on paper - 10 x 8

## FOR THE LOVE OF ART

November 6 and 7

10am to 5pm

**HARRIS BARN**

4140 Arthur Drive, Ladner, BC

FREE ADMISSION

BAYVIEW ARTS COLLECTIVE PRESENTS

## Artisan Tour Through Crescent Beach

NOVEMBER 13 & NOVEMBER 20  
10:00AM-3:00PM

AN ECLECTIC MIX OF TASTEFUL HOME AND PERSONAL ACCESSORIES  
FROM OVER 20 ARTISTS AND MAKERS

LEATHER GOODS • POTTERY • UPCYCLED FURNITURE  
JEWELRY • PAPER ART • DRIFTWOOD & PLANTS  
STAINED GLASS • TIE DYE • RESIN CRAFT  
SOAP & BODY CARE • KNIT & CROCHET GOODS • CUSTOM APPAREL  
DELICIOUS JAMAICAN PATTIES AND SAUCES

MAPS AVAILABLE AT BAYVIEW ARTS, SUNFLOWER CAFE, DUDE'S  
COFFEE, THE HEAD ROOM AND ALL OF OUR VENDORS

ENTER AT EACH LOCATION FOR A CHANCE TO WIN 1 OF 2 GIFT BASKETS



## ONLINE WATERCOLOUR CLASSES

Jess Rice is offering Online Watercolour Classes.

Don't miss this opportunity to create something delightful for yourself or as a Christmas gift.

Copy and paste the links below for more info.

The classes are as follows:

**Saturday, November 20th**

**Painting beautiful British Columbia scenes.**

<https://fraservalleycontinuingeducation.ca/product/saturday-watercolour-paint-bc/>

**Saturday, December 11th**

**Painting holiday cards.**

<https://fraservalleycontinuingeducation.ca/product/saturday-watercolour-holiday-cards/>

# WHAT'S ON...in and around the community

**PORT KELLS ARTS CLUB**

PRESENTS  
**FALL PAINTING EXHIBITION AND SALE**  
ORIGINAL WATERCOLOURS, ACRYLICS, OILS, AND PASTELS

**SUNDAY, NOV. 14, 2021**  
10:00 am - 4:00 pm

**FORT LANGLEY COMMUNITY HALL**  
9167 GLOVER ROAD - FORT LANGLEY

FREE ADMISSION, MEET THE ARTISTS

SPONSORED BY:  
B. C. ARTS COUNCIL, ARTS COUNCIL OF SURREY, LANGLEY ARTS COUNCIL,  
FORT LANGLEY COMMUNITY HALL ASSOCIATION



The Langley Arts Council is hosting the "One Way Gallery Exhibition" until February 10th 2022.

Venue: The new Langley MLA office: #104-20611 Fraser Hwy.

The exhibition is can be viewed Mondays to Fridays, 9am to 3.30pm.



CABOT TRAIL  
Linda Morris

## Calligraphy anyone?

Violet Smythe teaches watercolour (and calligraphy) from her studio.

For more information, or to be added to her email list, she can be reached by email at [v.smythe55@gmail.com](mailto:v.smythe55@gmail.com)

She also has a blog site at

<http://smythedesign.blogspot.com>

ARTSPACIFIC will be at the Alder-grove Kinsmen Community Centre Main Hall Gallery (26770 29th Ave) until Wednesday Nov 24th.



**WILDFIRE**  
Audrey Bakewell



## What have you been.....

Painting? Drawing? Sculpting?  
Making? Creating? Exhibiting?

Please contact me - Caroline Baasch - and let me know at [newsletter@artsociety.ca](mailto:newsletter@artsociety.ca)

**NO SUBMISSION IS TOO SMALL!!**

"The worst enemy to creativity is self-doubt."

- Sylvia Plath

# ABSTRACT PAINTING IN ACRYLIC cont...

After reaching a particular stage in the painting Georgina went back to the 'taped off' exercise, which was now almost dry. She removed the tape carefully (keep the angle of the tape low) to reveal several small abstract paintings, perfect for matting.

She made use of some interesting objects to make marks and texture in the painting. As well as using 'flat' brushes (which she prefers for painting), she used a fork to make scratch marks through the previously painted areas. She spritzed water onto the painting then moved the canvas around to create dribbles and flows.

"The beautiful randomness of these 'gems' is a result of not being afraid and wanting to play. If you relax and just play wonderful things can happen."

Returning to the canvas Georgina shared her mantra - "What if?"

"What if I use this colour or shape, or this mark, or scribbles and dribbles



etc". She also shared some other advice - "Listen to your painting with your eyes. I know it sounds "woo, woo", but your painting is always telling you what it needs. Be open to that message."

"Painting in abstract doesn't have to be hard, you just need to relax. If you have tried abstracts before and decided you couldn't do it, remember that you weren't born knowing how to walk.

"Did you give up when you kept falling down? No, you worked at it until you could run! Painting abstracts is just the same. Keep trying. You will find what pleases you. Follow what you love. Do more of what makes you happy."

Georgina's pallet consists of the cool and warm versions of the 3 primary colours plus some guests:- Cadmium orange, Hooker's green, Dioxazine purple, Titanium white, and Magenta. She likes working with 'flat' brushes because their chiseled shape gives clean edges when need.

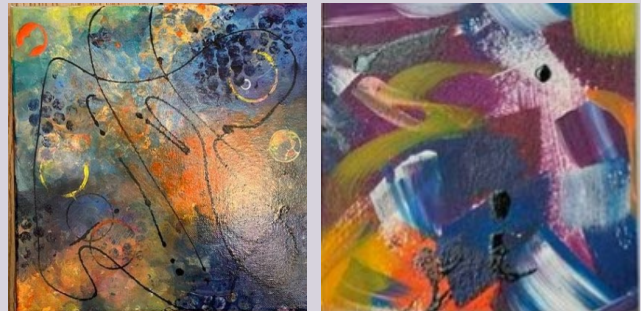
She gives a finished painting a protection (isolation) coat of soft gel gloss medium (Golden) mixed one part gel to 2 parts water. Be gentle mixing the gel and the water to avoid bubbles. If there are bubbles they usually flow out with the slight leveling of the protection coat.

This finishing coat evens out the different sheens of some of the colours and it also "bumps up" the colours.

## Thanks Georgina!



Elaine Burns



Wendy Gust



Tammy Bailey



