

WELCOME TO LONG-TERM CARE

AUGUST 2021 | BILQUIS ALI, RN CDONA

Flu season is approaching and Covid cases are back on the rise. Have you started a process to monitor your immunizations? We want to know. We also would like to help you develop a process if you do not have one in place!!!

DID YOU SAY CONSENTS?

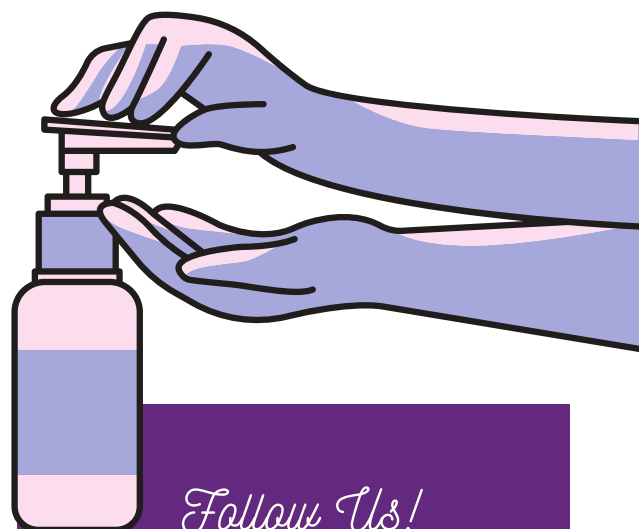
As always, you need signed consents for all immunization as well as education to be provided to the resident and or resident representative.

DID YOU SAY LINE LISTING?

Definitely. Your line listing should include your residents and staff that have symptoms. This can become overwhelming if you don't have a process in place prior outbreak. If possible, review your vital signs tab daily during your morning clinical process. Any residents with signs and symptoms should be updated on your list at that time. If your staff call off, educate your supervisors and schedulers to ask if they are experiencing any illness that reflect influenza and or Covid. Add them to the list and keep track of the day of onset.

DID YOU SAY HANDWASHING?

Absolutely, the best way to decrease the spread of infections are through handwashing!!!! If possible, purchase the Glo-Germ Gel and have staff wash their hands. You then can take the light and see if all the germs are off. This is a great way to improve education and outcomes!!! It is actually a fun activity do with your residents who are independent and move about the facility. Don't forget to complete the competency for it and mark it off your list!!!



Follow Us!

 [welcometolongtermcare](#)

 [welcometolongtermcare](#)

 [Bilquis Ali](#)

 [Bilquis Ali](#)

Contact for more info:

[WelcometoLong-TermCare.com](#)
consultant@welcometolong-termcare.com



But Did You Follow Through?™

What to look for with Welcome To Long-Term Care

LET'S TALK CITATIONS!!!

A new way that we would like to take to keep you updated on what is being cited and from what states. In order to do this, I need your help. Your facility won't be listed just the citations. I will then add tips on how to improve that area!!! Remember your POC doesn't have to be long and list 50 interventions. Keep it simple and realistic to your facility!!

Products

LET'S TALK PLANNERS

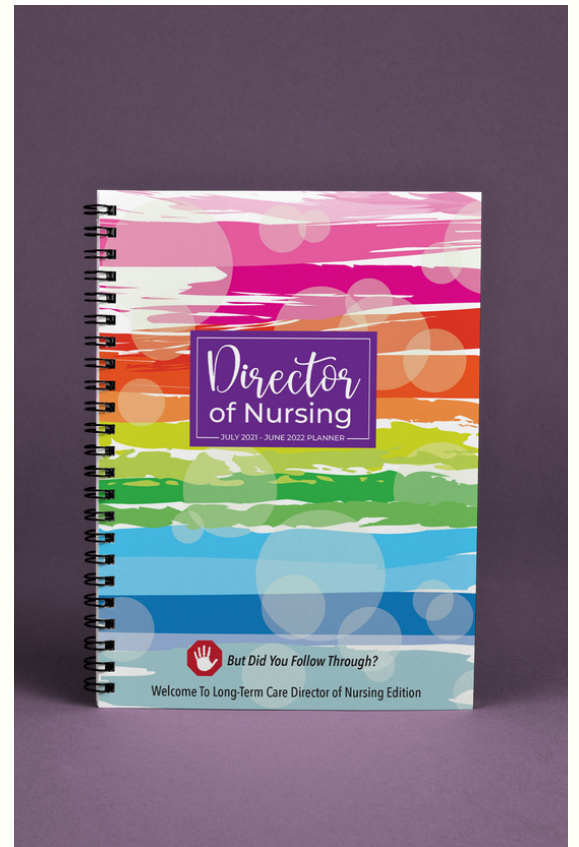
Planners to help you track and trend in your facility. This is also a great tool to get for your managers. Remember you want them to be able to manage their entire unit. This will allow you to direct and grow them to be future ADON/DONs.

DON TRAINING PROGRAM

A program for the novice DON as well as the DON that is in need of guidance. This approach is from a skill set and provides you a blueprint on how to be successful.

MEMBERSHIP

When you join the membership, you will have access to all products (not including the DON Training Program) and a monthly call of 20 minutes a month.



Coming Soon:

Group sessions that will be weekly to discuss any challenges you are having in your facility.