

Simplified Control Solutions

Instruction Manual

SCM-800US

8 Channel 900 Mhz Wireless Controller



Table of Contents

Safety..... 3
Specifications..... 4
Warranty..... 4
Setup..... 5
Controller Diagram..... 6
Operation..... 7
FCC Information..... 8

What’s in the Box:

- SCM-800US Receiver Unit w/ 10ft Fused Power Cable & Ring Terminals
- SRM-800US Remote Control Transmitter
- Black Grip Case, Extended Belt Clip with Attachment Points, and Lanyard
- Spare Remote Battery (CR2032 Coin Cell)
- 7x Dust Caps

Manuals, modules, and additional accessories for this unit (such as antenna mount relocation kits, additional remotes, AC and DC control Modules, etc...), can be found on our website: SimConSol.com

Important Safety Information

WARNING! Read all instructions and information in this manual.

Failure to follow all instructions may result in fire, serious injury and/or DEATH.

The warnings and precautions discussed in this manual cannot cover all possible conditions and situations that may occur. It must be understood by the operator that best practices and caution are factors which cannot be built into this product, but must be performed by the operator.

- 1. Disconnect battery from device before servicing.**
- 2. Do not install or operate while in an impaired state of mind.**
- 3. Do not operate with multiple remote controls unless safe to do so.**
- 4. Do not use it for any illegal or illicit applications.**
- 5. Do not use near sources of radio interference or other harm or damage. They may interfere with operation or cause unexpected operation.**
- 6. Do not use a damaged or malfunctioning components. If components do not work properly, discontinue use immediately and disconnect power.**
- 7. People with pacemakers should consult their physician(s) before use. Electromagnetic fields in close proximity to the heart pacemaker could cause pacemaker interference or pacemaker failure.**
- 8. Maintain labels and nameplates on the Unit and Remote. Record all info on tags these carry important information. If unreadable or missing, contact Simplified Control Solutions for a replacement.**

SAVE THIS MANUAL!

Specifications

Electrical Specs:	Min	Typical	Max	Units
DC Supply Voltage:	10.5	12	15	V
Supply Current	<1		25	A
Channel Current (each)			4	A

Warranty

Simplified Control Solutions LLC warrants this product to be free from defects in workmanship and materials, under normal commercial use and conditions, for a period of one (1) year from the original invoice date. Shipping and handling fees are to be paid for by the customer. Simplified Control Solutions LLC agrees, at its option during the warranty period, to repair any defect in material or workmanship or to furnish a repaired or refurbished product of equal value in exchange without charge (except for a fee for shipping, handling, packing, return postage, and insurance which will be incurred by the customer). Such repair or replacement is subject to verification of the defect or malfunction and proof of purchase as confirmed by showing the model number on original dated invoice.

WARRANTY LIMITATIONS

This warranty **does not** include:

- Any condition resulting from other than ordinary wear or any use for which the product was not intended
- Any condition resulting from incorrect or inadequate installation or care
- Damage resulting from misuse, abuse, negligence, accidents or shipping damage
- Dissatisfaction due to buyer's remorse
- Normal wear and tear

CLAIM PROCEDURES: Claims for defective merchandise must be made within ONE year from invoice date. Claims for missing parts must be made within 30 calendar days after the product is received. Any claim for defective product returns must be packed in original packaging. We reserve the right to specify that items be returned to the original warehouse for inspection or be inspected by our representative in the field. Pictures are required to claim defective merchandise, along with a copy of the original invoice. If the claim is justified, the item(s) or part(s) will be repaired or replaced or a credit will be issued. It is our policy to repair or replace parts whenever possible.

Setup

Mounting the Controller:

Find a spot with good access and a secure mounting surface for attaching the unit to. (See page 6 for mounting hole spacing) The unit is rated for outdoor exposure to the elements, when module channel connectors are sealed with a cable or dust cover. The antenna should be as high and in the open as possible to allow the best signal. Antenna relocation kits are available for remote mounting the antenna away from the controller.

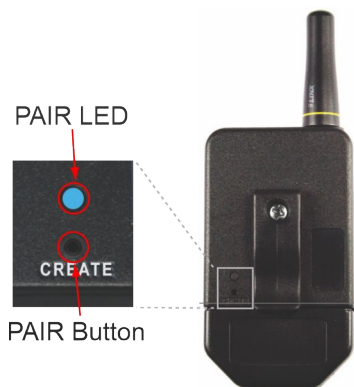
Connecting Accessory Modules:

After installing your accessory module following the instructions provided with it. Connect the module by aligning the orientation key, while pushing, screw the male end of the module signal cable into desired module channel connector on the controller. Once all module signal cables have been connected, screw provided dust caps into any unused channels to prevent damage to the controller.

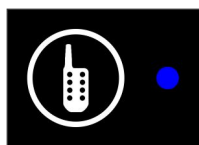
Connecting Controller Power:

Run the power cable, ensuring its secure and not prone to damage, to a 12V battery. Connect the fused conductor to the Positive (+) terminal, and black conductor to the Negative (-) terminal. If a additional cable length is required connect following proper industry standards and best practices when attaching to provided (10 awg) wire. The inline fuse must be re-connected at the battery end of the cable, for proper protection of the controller.

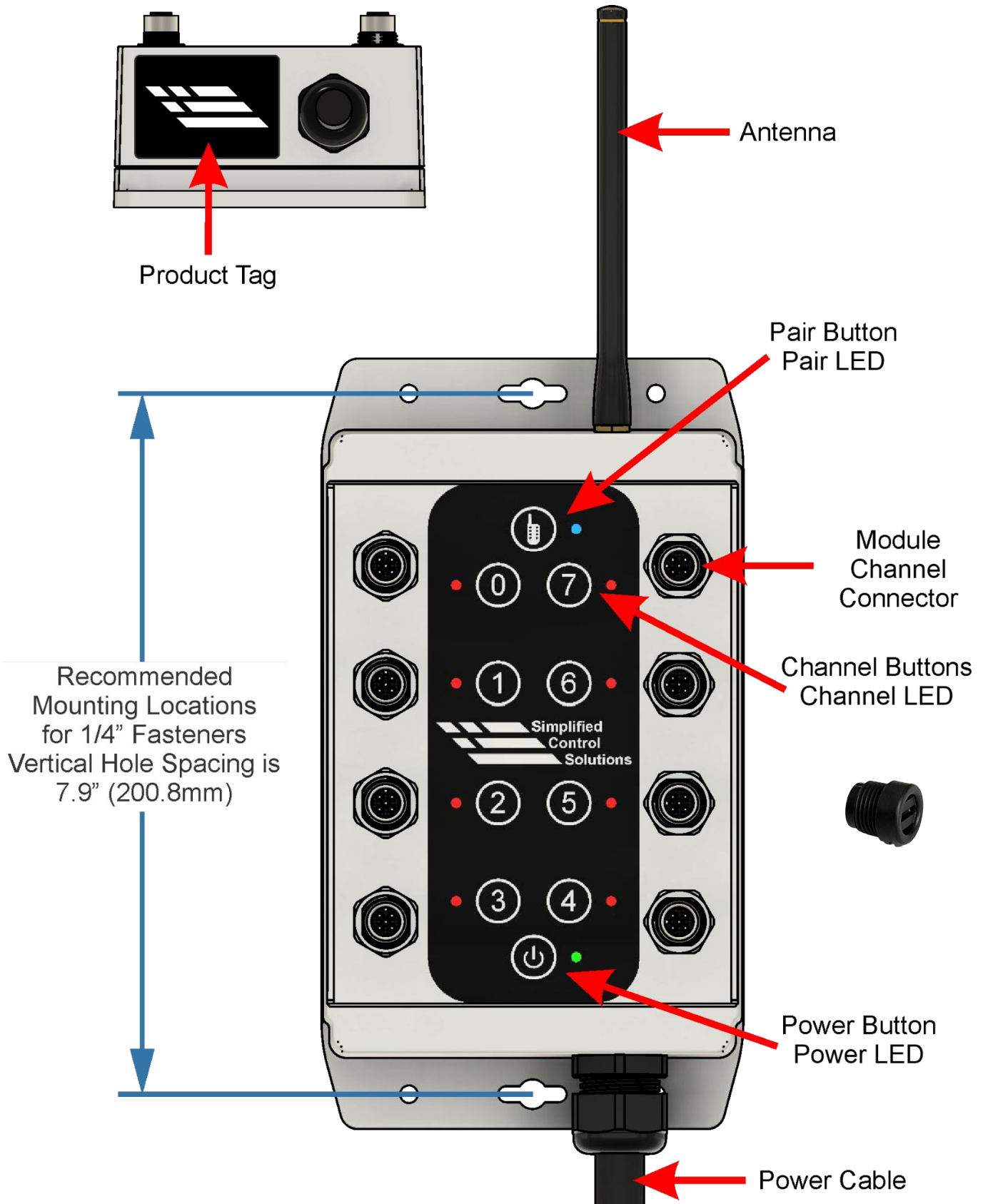
Pair Remote to Controller:



Press the remotes pair button on the back using a paperclip and the pair button on the front panel of the SCM-800. For additional information read the instruction manual provided with the remote. (Also can be found on our website: SimConSol.com)



Controller Diagram



Operation

Turning the Controller ON & OFF

A single press (~1 second) of the Power button on the front of the controller will turn ON the Controller (the green Power LED will illuminate) and feed power to the all channels on the +12V DC pin. Turning OFF the controller by pressing and holding the power button for 4 seconds (the green Power LED will begin to flash) starts the shut down process. During the shut down process each channel will be turned OFF (sent to Normally Closed (N.C.) state) and allow modules to cycle over the course of 12 seconds. Once the power down cycle has completed the controller will kill all power to the channels and itself. (Fully disconnecting power in order to insure that there is not any drain on the connected battery/power source.)

Turning Channels ON & OFF (Single Channel)

A single press (<1 second) of one of a channel button, on either the front of the controller or a remote, will turn ON that channel (red LED next to that channel button on front of controller will illuminate). Switching the Common (COM) pin from being connected to Normally Closed (N.C.) pin, to the Normally Open (N.O.) pin. Turn OFF the channel by pressing and holding that channels button for >2 seconds, which will switch the Common (COM) pin from being connected to the Normally Open (N.O.) pin, to the Normally Closed (N.C.) pin.

Turning All Channels OFF (All Channels)

To turn OFF all of the channels at once, press and hold the 3 & 4 channel buttons simultaneously for >2 seconds, this will switch all the Common (COM) pins from being connected to the Normally Open (N.O.) pins to the Normally Closed (N.C.) pins.

Channel Reactivation Time (Each Channel)

There is a time 5 second lockout for reactivating a channel (OFF to ON), in order to prevent accidental activation and allow modules to cycle properly. All other operations will still function normally during this delay.

FCC / IC NOTICES

This product contains **FCC ID: OJM900MCA / IC: 5840A-900MCA**.

This device complies with Part 15 of the FCC rules and Industry Canada license-exempt RSS standards. Operation of this device is subject to the following two conditions:

1. This device may not cause harmful interference, and
2. this device must accept any interference received, including interference that may cause undesired operation.

This equipment has been tested and found to comply with the limits for a Class B digital device, pursuant to Part 15 of the FCC Rules. These limits are designed to provide reasonable protection against harmful interference in a residential installation. This equipment generates, uses and can radiate radio frequency energy and, if not installed and used in accordance with the instructions, may cause harmful interference to radio communications. However, there is no guarantee that interference will not occur in a particular installation. If this equipment does cause harmful interference to radio or television reception, which can be determined by turning the equipment off and on, the user is encouraged to try to correct the interference by one or more of the following measures:

- Reorient or relocate the receiving antenna.
- Increase the separation between the equipment and receiver.
- Connect the equipment into an outlet on a circuit different from that to which the receiver is connected.
- Consult the dealer or an experienced radio/TV technician for help.

Any modifications could void the user's authority to operate the equipment.

Le présent appareil est conforme aux CNR d'Industrie Canada applicables aux appareils radio exempts de licence. L'exploitation est autorisée aux deux conditions suivantes:

1. l'appareil ne doit pas produire de brouillage, et
2. l'utilisateur de l'appareil doit accepter tout brouillage radioélectrique subi, même si le brouillage est susceptible d'en compromettre le fonctionnement

Simplified Control Solutions, LLC
Indianapolis, IN 46218

Visit our website at: www.SimConSol.com
Email our technical support at: Support@SimConSol.com