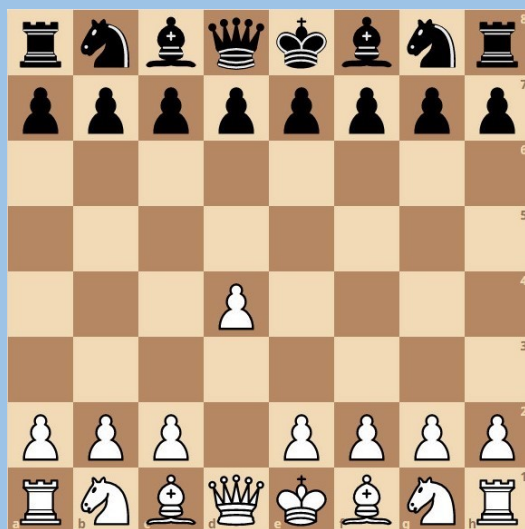


Lesson 26: Chess Openings II



Queen Pawn Openings

In the last worksheet we looked at King Pawn Openings, beginning 1. e4. Equally popular are Queen Pawn Openings, starting with 1. d4. At Grandmaster level over 80% of all games begin with one of these two moves.

1. e4 often leads to open positions, where some pawns are exchanged in the first few moves, freeing up the board for the stronger pieces to make an early attack. 1. d4 often leads to closed positions, where the pawns in

the centre are blocked and the play becomes more strategic. Attacks may build up slowly, and happen later in the game, but are no less effective!

Which is best? Chess players have been arguing about this for years. Most have favourite first moves. Which is yours?

The Indian Defences

One popular response to 1. d4 is for Black to play 1...Nf6. Black allows their opponent to occupy the centre, hoping that White will overstretch themselves. It's a counter-attacking strategy, discovered by a group of players known as the Hypermodernists, 100 years ago.

At the time, Indian chess had different rules: the pawn could only ever move one square at a time and the king could make a single move like a knight. The positions reached in Indian chess looked like these Hypermodern Openings. The Indian Defences were born.



Nimzo Indian



King's Indian



Queen's Indian



The Queen's Gambit

If the game begins 1. d4 d5, the most popular choice for White is to play the Queen's Gambit with 2. c4. White offers the c-pawn as a sacrifice (gambit), luring the Black d-pawn away from the centre of the board.

Black often declines the sacrifice by 2...e6. 3. Nc3 Nf6. There are now many possibilities for White but a good starting point for new chess players is the Carlsbad (or Exchange) Variation: 4. cxd5 exd5 (see diagram below).

One reason this is a great choice is that White now has a range of attacking plans:

1. On the queenside with the a- and b- pawns and with rooks along the semi-open c-file.
2. In the centre by playing pawns to f3 and e4.
3. Against the Black king by castling queenside and pushing the g- and h-pawns down the board.



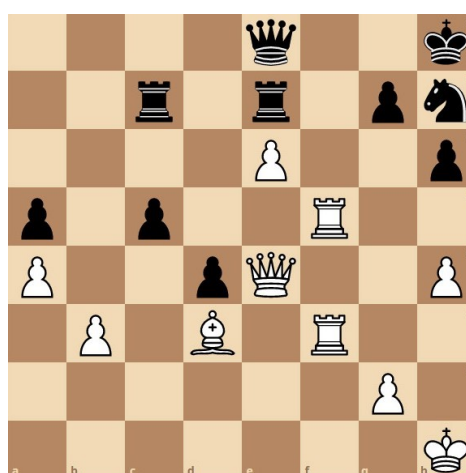
Remember, it's important to develop your pieces before launching an attack!

You Choose

We've only considered the most popular first moves: 1. e4 and 1. d4. There are another 18 legal choices - plenty of chances to surprise your opponents.

Grandmaster Test—Lesson 25

Answer: 1...Qg1+ forces checkmate. White is forced to recapture with rook or knight and then 2...Nf2# is a smothered checkmate.



Grandmaster Test

One of the most famous games in the Queen's Gambit occurred in the match between Bobby Fischer and Boris Spassky in

1972. Fischer has just played 37. Qe4. Can you see what he had planned if Spassky had captured the e-pawn with 37...Rxe6?



Jumbo Wordsearch

Now you know a little about Queen's Pawn Openings, it's time to try our second Jumbo Wordsearch. All the openings begin with 1. d4.



S	D	F	G	E	C	N	E	F	E	D	D	L	E	F	N	U	R	G	Q
A	E	L	O	N	D	O	N	S	Y	S	T	E	M	W	Q	V	B	N	U
I	O	M	K	H	J	E	C	N	E	F	E	D	H	S	I	L	O	P	E
R	T	Y	N	G	F	D	S	D	U	T	C	H	D	E	F	E	N	C	E
E	Q	A	D	G	J	K	L	U	I	Y	T	O	W	I	D	H	J	L	N
T	T	R	Y	U	I	S	E	D	F	N	H	J	L	K	N	B	N	M	S
Q	R	O	L	D	I	N	D	I	A	N	O	J	Q	L	E	O	X	Z	G
A	O	B	D	F	G	A	K	L	A	E	F	N	O	L	E	M	N	D	A
N	M	E	S	W	E	I	F	I	B	H	J	A	E	K	L	J	K	E	M
A	P	N	O	I	P	D	D	K	L	K	K	I	J	B	F	D	S	W	B
I	O	K	W	E	R	N	A	C	V	B	C	D	B	N	H	M	K	I	I
D	W	O	Q	E	I	I	H	G	F	E	A	N	R	Y	I	C	J	K	T
N	S	G	S	O	R	S	R	G	J	N	T	I	S	W	Q	A	E	K	A
I	K	A	Z	Y	U	N	I	L	K	M	T	O	D	F	G	B	N	Z	C
S	Y	M	Q	D	F	E	C	F	V	B	A	G	N	A	L	A	T	A	C
G	I	B	S	F	G	E	J	L	I	U	E	O	T	U	I	K	J	M	E
N	W	I	E	R	T	U	K	U	K	L	R	B	H	K	J	M	H	J	P
I	S	T	F	G	H	Q	O	O	V	E	R	E	S	O	V	U	W	J	T
K	D	F	G	G	Q	U	I	M	J	K	O	Q	E	V	J	N	M	K	E
Q	U	E	E	N	S	G	A	M	B	I	T	D	E	C	L	I	N	E	D

Benko Gambit

Benoni

Bogo Indian

Catalan

Colle

Czech Benoni

Dutch Defence

Grunfeld Defence

King's Indian

London System

Nimzo Indian

Old Indian

Queen's Gambit Accepted

Queen's Gambit Declined

Queen's Indian

Torre Attack

Trompowsky

Veresov