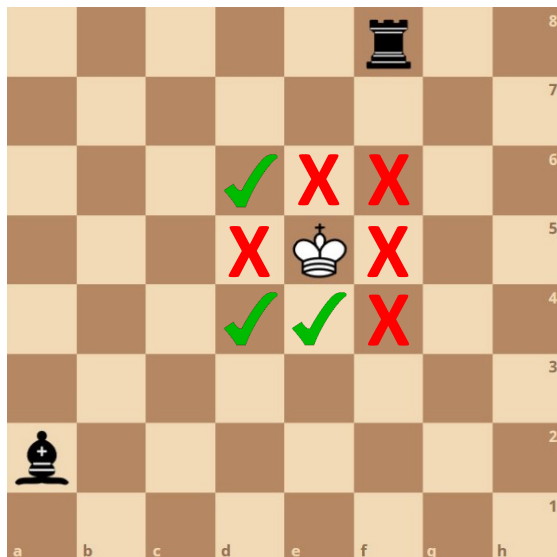


Lesson 6: the KING

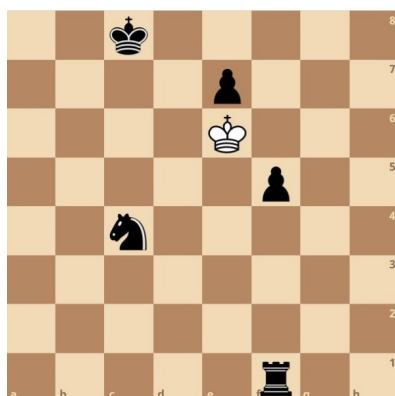
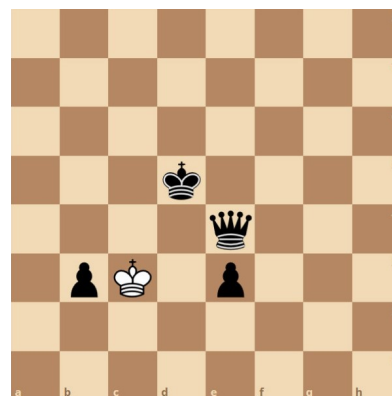
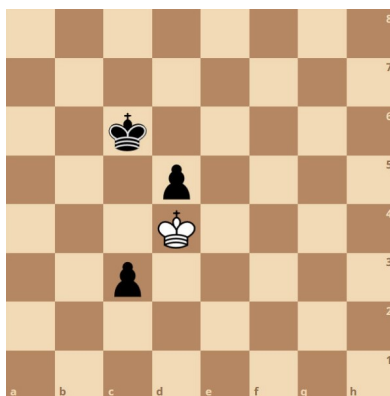
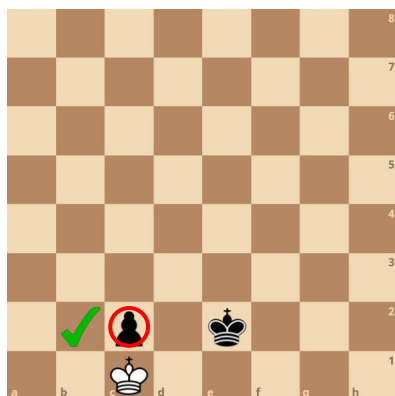


The King Move

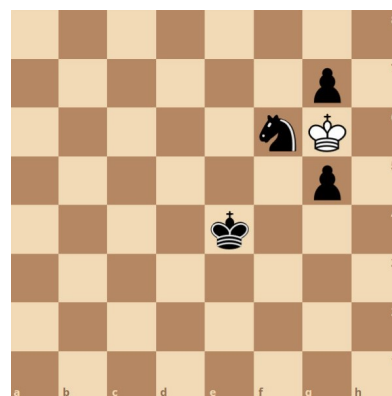
- one square in any direction
- the king can capture an opponent's piece if it's on one of those squares
- the king CANNOT move to a square that is attacked by one of the opponent's pieces. That's an *illegal* move!

Puzzle Corner

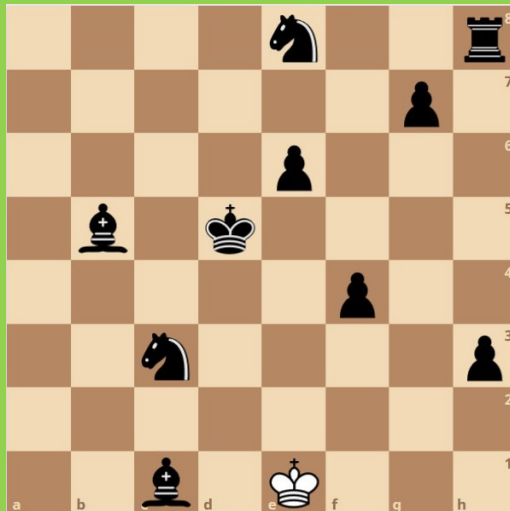
Put a tick in any square the White king can move to, and circle any Black pawns White can capture. Remember to avoid illegal moves.



These are
a bit
trickier
so we've
done the
first one
for you!



Can you rescue the king?



The White king is stuck on square e1 and needs to find a safe way to travel across the chessboard to square b8. Can you find a route for him?

Remember, he moves one square in any direction but must never land on a square attacked by any of the Black pieces.

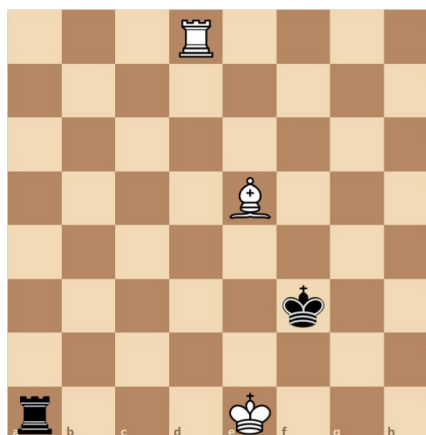
Draw arrows to show the correct route.

Did you manage it? You're a-MAZE-ing!

Did you know?

The king is the most important piece on the chessboard. You must look after him at all times. The word "chess" comes from a Persian word "shah" which means "king". We'll soon learn about checkmate or "shah met": the king is dead!

Grandmaster Test



Whiffy!

Put a White king on square e4 and a Black king on square e6. Can White move their king to d5, e5, or f5? No, because those squares are attacked by the Black king. Some kings have bad breath and don't like to stand too close!

Another king is in trouble. The Black rook is attacking the White king. He needs to be rescued. Can you find three different White moves to stop the attack? Answer next time.

You're nearly there!



You now know how all the pieces move. Try setting up the full board and having a game. First one to get a pawn to the far side wins.

Grandmaster Test Lesson 5

Answer: It takes four moves to get a knight from d4 to f6, for example d4-e6-c5-e4-f6. It takes 6 moves to get a knight from a1 to h8, for example a1-b3-d4-e6-g5-f7-h8. Can you see why it is impossible to do that in five moves? This about what colour square the king will be on after 5 moves.