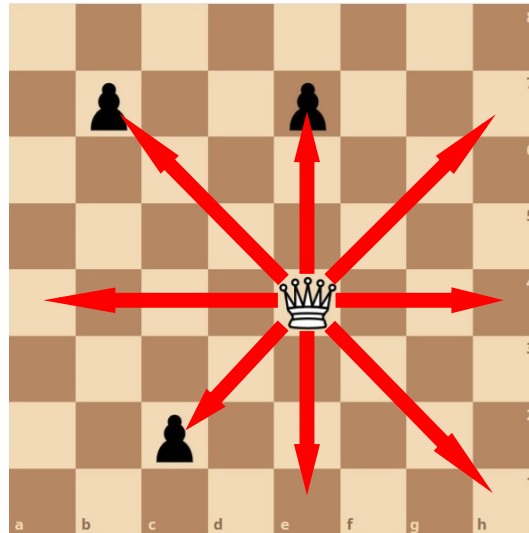


## Lesson 4: the QUEEN

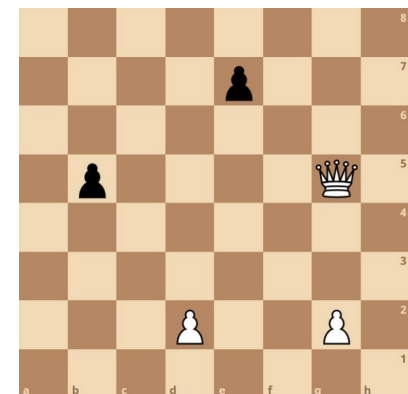
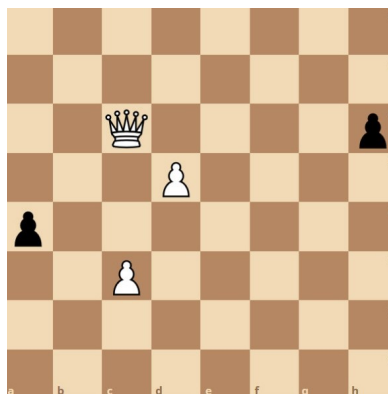
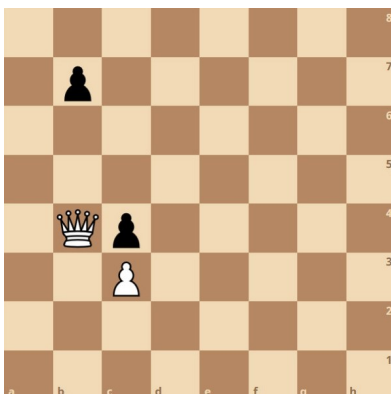
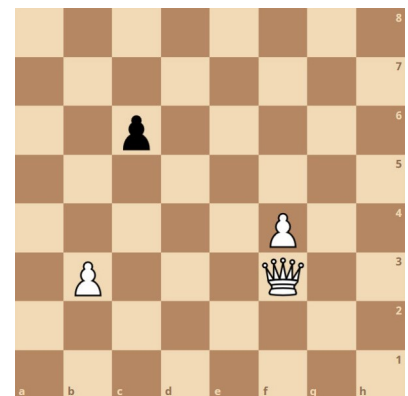
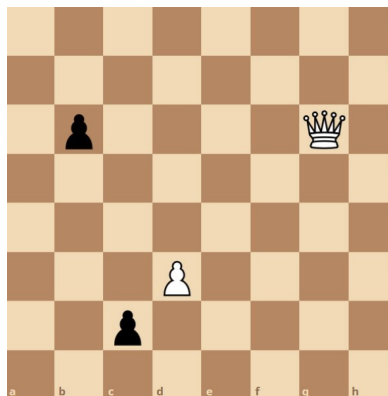
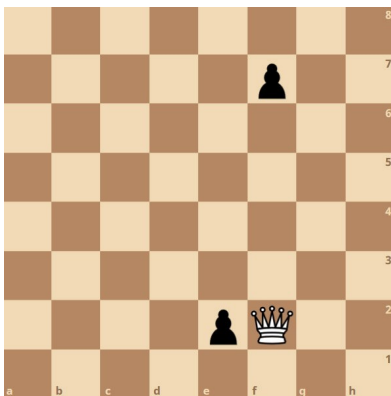


### The Queen Move

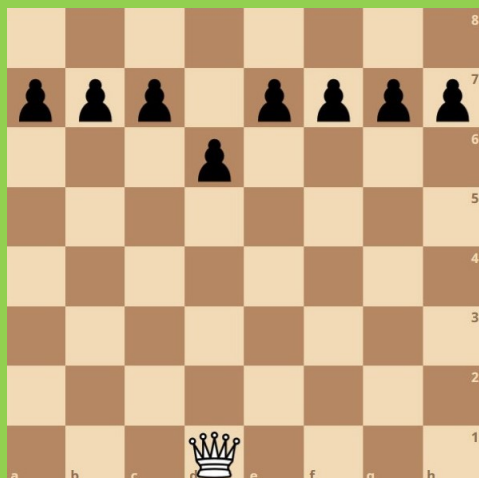
- as many squares as you want diagonally, forwards, backwards or sideways (like a rook or a bishop)
- a queen can capture an opponent's piece in its path

### Puzzle Corner

Put a cross in any square that the White queen can move to, and circle any Black pawns that White can capture.



## Mini-game: Killer Queen!



Set up the position on the left. Toss a coin to decide who has the White queen first.

White wins this game by capturing all the Black pawns before any of them reach the far side of the board.

Black wins by capturing the White queen or by getting a pawn to the far side of the board.

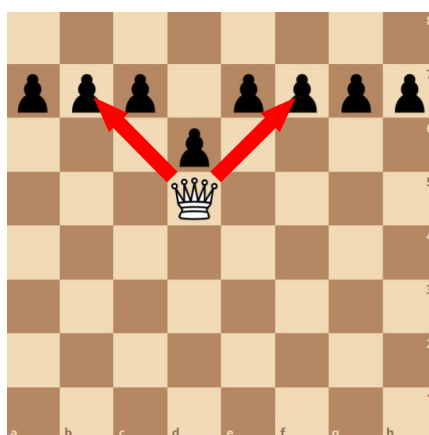
The pawns have to get to the far side SAFELY. That means they can't be immediately captured by the queen.

Why do you think we start with the pawn on square d6 and not d7?

### Did you know?

The queen is the most powerful piece on the chessboard. Years ago, you had to warn your opponent if you attacked their queen by saying "Gardez!". Today's players are nowhere near that polite. Watch out!

### Grandmaster Test



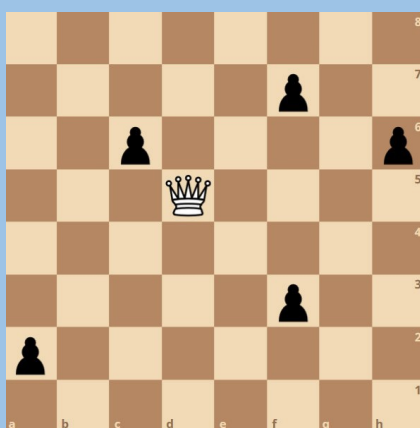
### Double Attack!

Move the queen to square d5 (left). Next move you can *safely* capture either the pawn on b7 or the pawn on f7 (but not d6!). In chess we call this a fork. We'll learn more about forks later.

By moving the queen to d5 you are forking the Black pawns (see right). From the starting position of the Killer Queen, how many different queen moves fork Black pawns? Answer with Lesson 5.

### Queen of Speed

The queen can move around the board very quickly. Can you find the route to capture five pawns in five moves? Can you make up your own speed puzzles to test your friends or parents?



### Grandmaster Test

#### Lesson 3

**Answer:** The bishop attacks 13 different squares if you put it on d4, e4, d5, or e5. However, on the edges of the board it only attacks seven squares. Where would you rather put your bishops?