

# FRENIC-MEGA (G2)

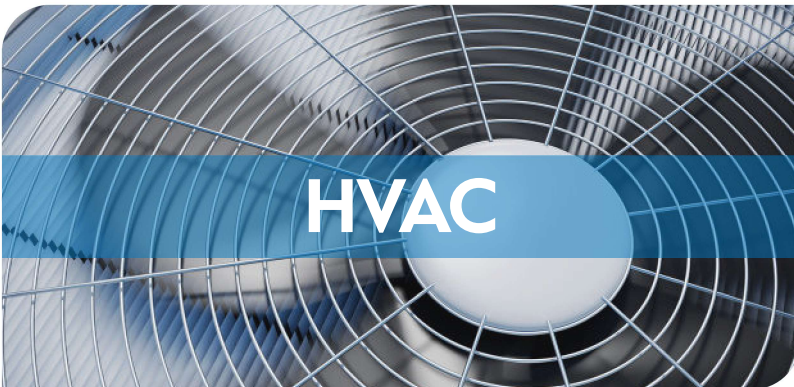
## 3-in-1 Applications



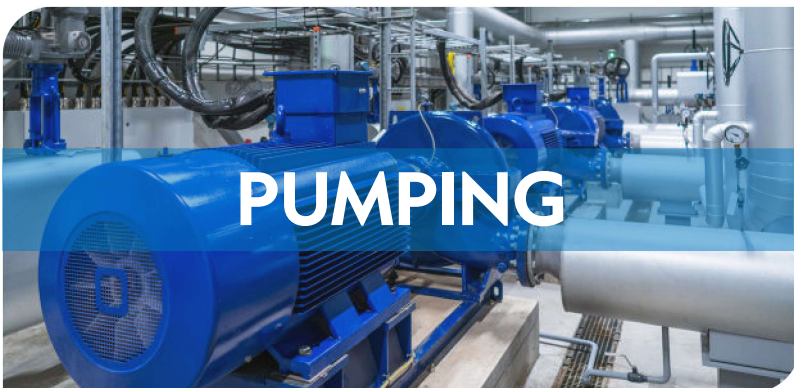
Our new FRENIC-MEGA (G2) AC drive combines the functionality of multiple previous FRENIC drive families while taking performance and reliability to a whole new level. This makes it ideal for a broad range of applications, including Industrial, HVAC and Pumping. So, no matter how varied your applications are, you can spec and stock from a single drive family to maximize your flexibility and minimize. Now, that's truly an evolution in AC Drive design!



- Positioning, Orientation Function
- Current Response 1,000Hz
- 260 Steps Customizable Logic Functions
- Expand Built-In Braking Transistor Up to 75HP 230V, 100HP 460V HHD



- Fireman's Override
- Real Time Clock Schedule
- Broken Belt Detection
- Fan Fly Catching
- Build-in Metasys N2 and BACnet MS/TP protocol



- Broken Pipe Detection
- Pipe Fill Mode
- Cascade Pump Control
- 4 PID Controls and PID Auto Tuning

The FRENIC-MEGA (G2) upholds Fuji Electric's renowned standards for quality, robust design, and user-friendly interface in general-purpose drives. This newest edition to the FRENIC-MEGA family surpasses its predecessor by introducing advanced high-performance features. Available from 1/2 to 1,200HP, the FRENIC-MEGA (G2) comes complete with a unified interface, standardized programming, and industrial network connectivity - all backed by a best-in-class warranty, 3 years from factory, upgradable to 8 years.



## FEATURES

- Sensorless Vector Control Mode
- Advanced PID Functions
- Built-In Safe Torque Off (STO) Input
- Removable Control Terminals
- Multi Function Keypad as Standard
- Permanent Magnet Synchronous Motor Operation
- DeviceNet, PROFIBUD-DP, EtherNet/IP, PROFINET RT, Modbus-TCP, BACnet/IP by Option Card

## KEY BENEFITS

- One drive that is capable of both constant torque and variable torque
- One drive that can cover all applications to minimize inventory
- UL Type 1/NEMA 1 by Option Kit
- UL Type 12 Heatsink Above 100HP
- Easy-to-read plain-English keypad for ease of configuration and monitoring
- USB port that can be used to connect a PC and access robust, yet easy-to-program functions
- Built on the ultra-reliable and field-proven FRENIC-MEGA series platform



**A DRIVE FOR JUST ABOUT EVERY APPLICATION!**

230V: ½ – 150HP  
460V : ½ – 1,200HP



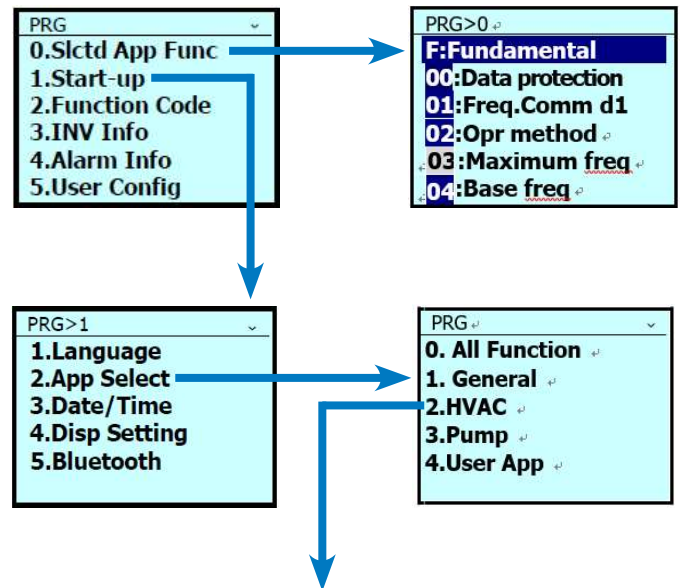
## APPLICATION SETTINGS

The FRENIC-MEGA (G2) comes with extensive yet simple to utilize application settings helping you setup and optimize quicker than ever.



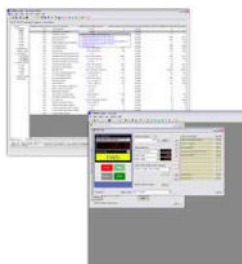
## KEYPAD

The FRENIC-MEGA (G2)'s full feature keypad includes Bluetooth connectivity. The FRENIC Mobile Loader is a free configuration and troubleshooting bluetooth connected phone App tool for enhanced user productivity panel mounted.



## SOFTWARE

All FRENIC Series inverters come with complimentary programming/troubleshooting PC software.



General	HVAC	Pump
F code	F code	F code
E code	E code	E code
C code	C code	C code
P code	P code (PM ?)	P code (PM?)
H code	H code	H code
a,b,r code (motor2,3,4)		
A, b, r code (Speed control 3,4)		
J code	J code	J code
	J1 code (PID1)	J1 code (PID1)
	J2 code (PID2)	J2 code (PID2)
		J4 code (Cascade)
	J5 code (Ex PID1)	J5 code (Ex PID1)
	J6 code (Ex PID2,3)	J6 code (Ex PID2,3)
d code	d code (No positioning)	d code (No positioning)
U code	U code	U code
U1 code	U1 code	U1 code
y code	y code (+BAC, N2)	y code (+BAC, N2)
	T code (Timer)	T code (Timer)
	K code (Keypad)	K code (Keypad)