



1st Saturdays
10 am - 2 pm
**Hernando Beach
Front Porch Art Walk**



Location	Exhibitor #	Artist	Medium
SILVER DOLPHIN RESTAURANT & GIFT SHOP 4036 SHOAL LINE BLVD.	0	REGISTRATION BOOTH	Vendor Check In
	1		
	2		
	3		
	3		
	4		
	4A		
	5		
	6		
	7		
	8		
	9		
	10		
	11		
	12		
	13		
	14		
	15		
	16		
	17		
	18		
COLDWELL BANKER WEAVER GROUP REALTY 3436 SHOAL LINE BLVD.	19		
	20		
	21		
	22	REGISTRATION BOOTH	VENDOR CHECK IN
	 22	Driveway - Keep Open	
	23		
	24		
	25		
	26		
	27		
	28		
	29		
	 29	Driveway - Keep Open	
	30		
	31		
	32		
	33		
	34		
	35		
	36		
	37		
	38		
	39	Hernando County Arts Council	SPONSOR - Level 1
	40		
	41		
	42		

1st Saturdays
 10 am - 2 pm
**Hernando Beach
 Front Porch Art Walk**

Grass by Front Porch-2

Front Porch - 3

Tents - 11

ART WALK PARKING AT DOLLAR
GENERAL OR PRESERVE
PARKING LOT TO THE NORTH

PARKING

SILVER DOLPHIN RESTAURANT & COUNTRY STORE
PATRON PARKING ONLY
4036 SHOAL LINE BLVD.

Shoal Line Blvd.

SILVER DOLPHIN
Exhibitors #'s 1-18

Exh #	Artist	CHECK IN
0	REGISTRATION BOOTH	
1		
2		
3A		
3B		
4A		
4B		
5		
6		
7		
8		
9		
10		
11		
12		
13		
14		
15		
16		
17		
18		

1st Saturdays 10 am - 2 pm Hernando Beach Front Porch Art Walk

30 31 32 33 34 35 36 37 38

29 28 27 26 25 24 23

19 20 21 22 CHECK IN

Front Porch Art Walk
Parking At
VFW or
Brian's West Parking Lot

**PARKING AT 34-38 FOR
DISABLED AND AS
ASSIGNED**

COLDWELL BANKER WEAVER REALTY GROUP

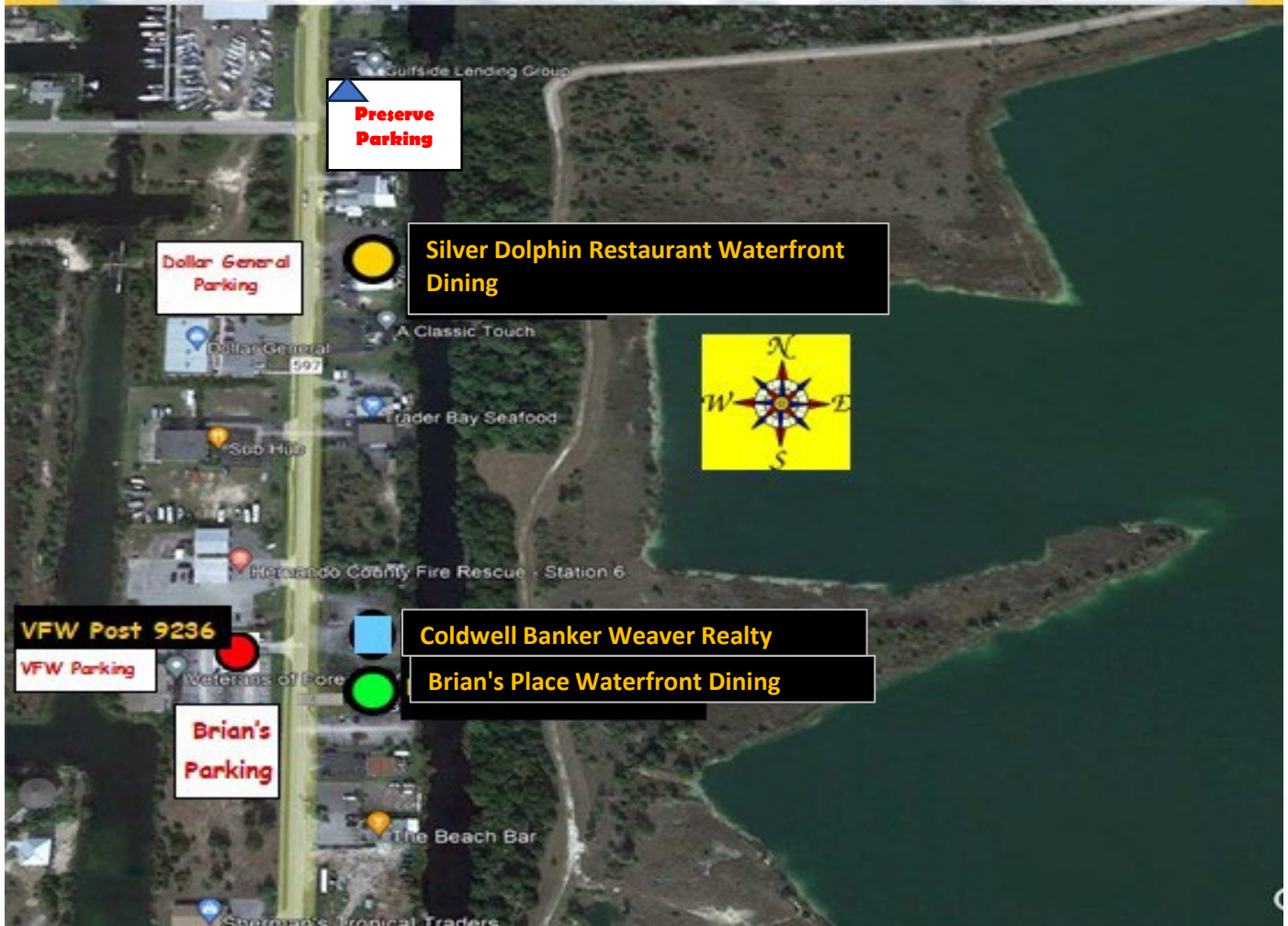
3436 SHOAL LINE BLVD.






COLDWELL BANKER WEAVER REALTY GROUP

Exhibitor #'s 19-45

Exh #	Artist	CHECK IN
19		
20		
21		
22		
23		
24		
25		
26		
27		
28		
29		
30		
31		
32		
33		
34		
35		
36		
37		
38		
39		
40		
41		
42		

1st Saturdays 10 am - 2 pm Hernando Beach Front Porch Art Walk



-  Silver Dolphin Restaurant 4036 Shoal Line Blvd
-  Coldwell Banker Weaver Realty
-  Brian's Place 3430 Shoal Line Blvd
-  VFW PARKING
-  Preserve Parking Lot

