



# Environment & Safety

The safety of communities, people, and the environment is at the heart of our project. We are committed to being good neighbors and considering feedback from all relevant stakeholders into both the proposed route and the project's overall design.

## Our Core Values

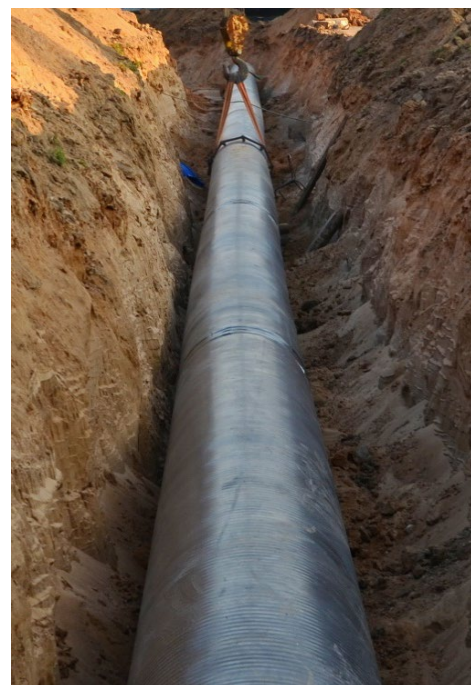
**Operational Safety.** Once completed, highly trained pipeline controllers use advanced technology to carefully monitor our pipelines — 24/7/365 — and complete regular aerial and ground safety inspections along the route.

**Safety Team.** We employ a dedicated team of safety and environmental professionals who build and maintain stringent safety programs and practices, and every single employee and contractor has the authority to stop work they believe is unsafe.

**Safety Dedication.** We are dedicated to pipeline safety, use high-quality steel pipe, and ensure our pipelines meet or exceed the applicable standards for pipeline construction and operation. Every employee and contractor has the authority to stop work they believe is unsafe.

## Pipeline Integrity

- Each joint of pipe is inspected before it leaves the mill and uses greater pipe wall thickness than is required by federal standards.
- One hundred percent of the field welds are examined by x-ray before the line is placed in service.
- A post-construction hydro test is conducted, and inspection tools are run upon completion to verify the condition of the pipe.
- The line is thoroughly inspected to ensure that there are no issues with the pipe's specialized coating.
- A cathodic protection system designed to guard against corrosion and to help maintain ongoing structural integrity.





## Planning

### Pre-Construction

- **Environmental Permits.** We have thoroughly surveyed the pipeline's route and are working with federal agencies to ensure that there are no adverse effects to threatened or endangered species or their habitat during the construction and operation of the Pelican Pipeline.
- **Environmental Study/Biology.** Once our environmental and cultural surveys are completed, we will begin the process for securing the necessary environmental permits from Federal, State and local agencies. The surveys will gather significant amounts of environmental data through field study and analysis, which we provide to regulators and permitting agencies as required.



### Construction

- **Safe Construction.** The safety of our personnel, landowners, and the surrounding communities is of the utmost importance throughout the construction process. Utilizing industry best practices, we ensure the Pelican Pipeline is completed in a safe and secure manner.

### Operation

- **Pipeline Inspection.** Regular aerial surveillance of the line is performed to look for potential risks to the pipeline, including encroachment or other unauthorized activity on the right-of-way, as well as any other potentially concerning surface conditions along the pipeline. We also conduct regular foot patrol inspections along the entire route.
- **Pipeline Markers.** Pipeline markers are installed within line-of-sight on the pipeline route noting the general location of the pipeline, including at road, property, and creek crossings.
- **Retome Shutdown.** Highly trained pipeline controllers can take real-time and nearly instantaneous action to remotely shut down a pipeline system if a problem is suspected, and the line can only be returned to operation after field personnel conduct a thorough visual inspection and correct the problem.

## CALL 811

*One of the biggest dangers to a pipeline, once it is in service, is a third-party line interference. Our industry works together to promote safe digging and excavating practices which, when employed, significantly decrease risks around a pipeline.*