

When I had the RV home from storage, between a camping trip, I was testing out some things and I could not get the inverter turned on. This is yet another thing that the pile of manuals the dealer hands you doesn't seem to mention. And where the heck is the inverter, anyway?

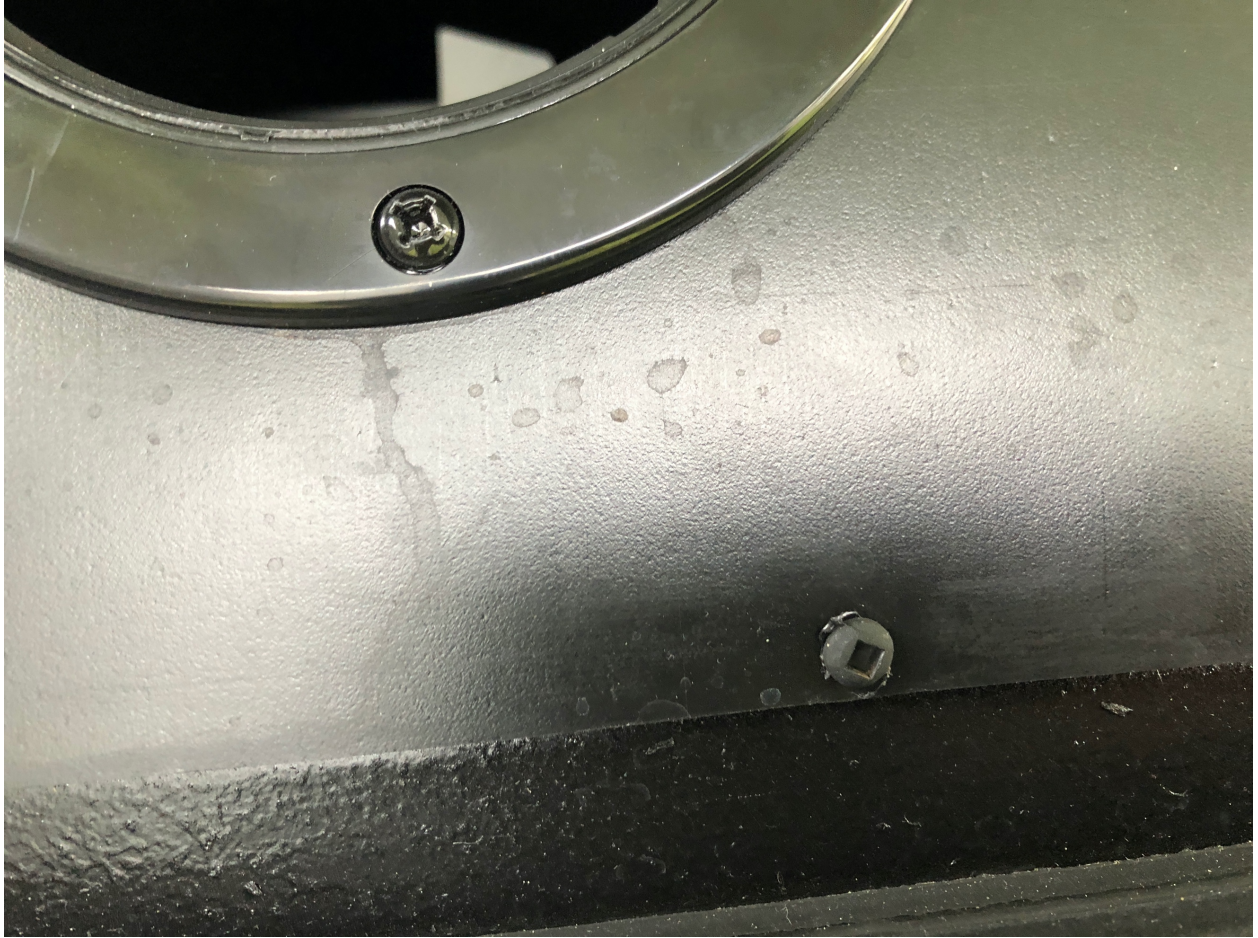


Through some questions my wife asked in a Facebook group, we learned that the inverter probably wasn't turning on because the GFI outlet was tripped. Fair enough, makes sense. But I tried and tried and could not find it! My research yielded nothing, so the wife found the answers—again—in a Facebook group.



I was able to reach hand back in through the access hole and reset GFI. Not easy, but doable. Another option is to remove the panel by taking out the four screws holding it in place. Note the screws use a square bit. My advice is to have several square bits available as screws throughout the coach—inside and out—use them.





After resetting the GFI, the inverter worked when we turned it on! Easy enough, but figuring out what to do and where things were located, was quite a pain. At least for a newbie...