

## THERMAL FEVER SCREENING FACE RECOGNITION



**FIGHT COVID-19**

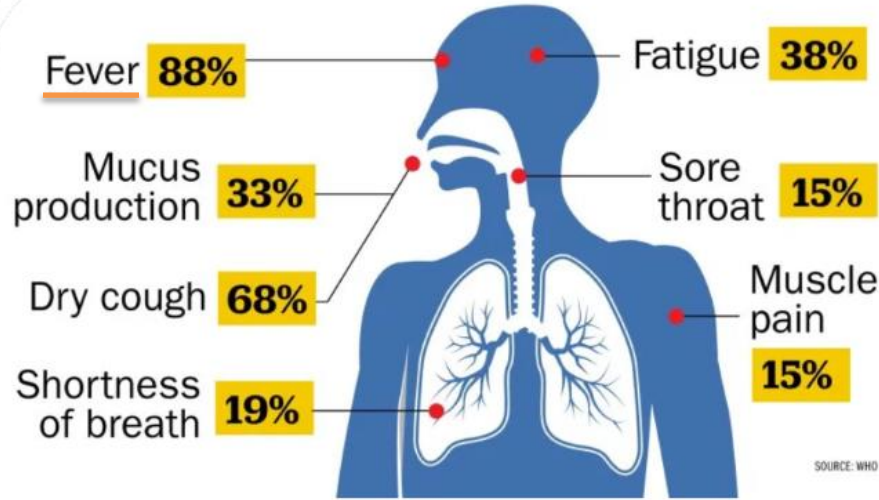


**Livedarshan**

SECURITY & SURVEILLANCE SYSTEMS



## COVID-19 SYMPTOMS



“ According to a study of nearly 56,000 laboratory confirmed cases cited in the WHO report, the most common symptom, experienced by 88% of confirmed covid-19 patients, is a fever . ”

### TOUCH

“ When a person sneezes or coughs, small droplets from the nose or mouth fall on surfaces , other people touch these surfaces and spread the diseases. ”

### FEVER

## TURNKEY SOLUTION - DESIGN - SUPPLY - INSTALLATION - MAINTENANCE



Livedarshan has developed a state of the art product that uses patent-pending technology to monitor the body temperature of visitors or employees before entering the workspace or pedestrian transit areas.

As per our responsibility & **Government mandates of mandatory thermal scanning of everyone entering and exiting & touchless access control systems**, it is important to ensure proper measures are taken by organizations to mitigate the risks of COVID-19 spreading.

When entering almost every office building, society, hotel, building, etc. everyone's body temperature needs to be checked and if they have a fever, they should not be allowed in and instead advised to see a doctor.



## COVID-19 SOLUTION

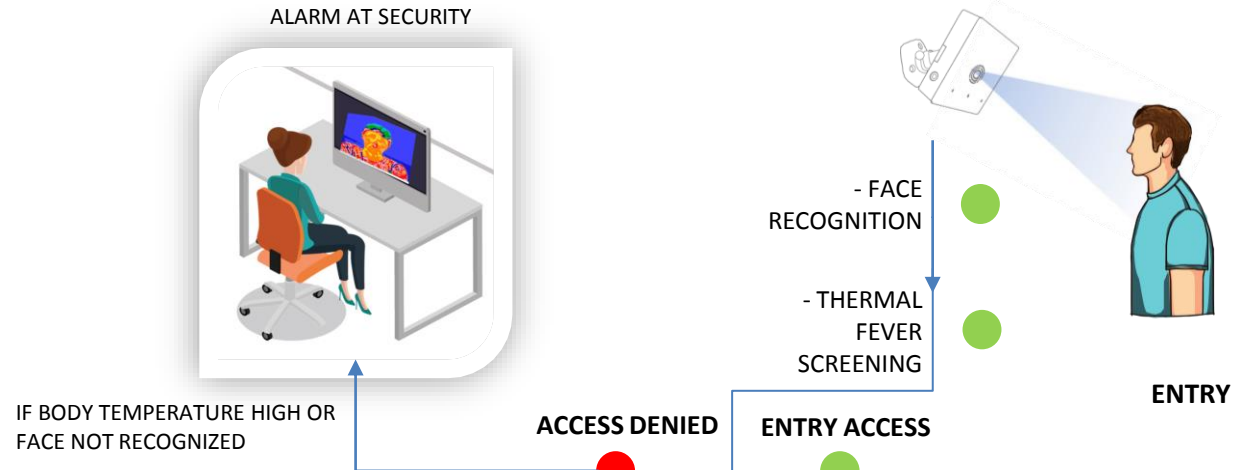


Face Detection , Recognition & Accurate Temperature Monitoring System is a patented non-contact thermal imaging and temperature measurement device.



- THERMAL FEVER SCREENING
- FACE RECOGNITION
- ATTENDANCE & ACCESS CONTROL Integration

# HOW IT WORKS



## INTERGRABLE IN EXISTING SYSTEM

Payroll processing and  
Time and Attendance  
Management System

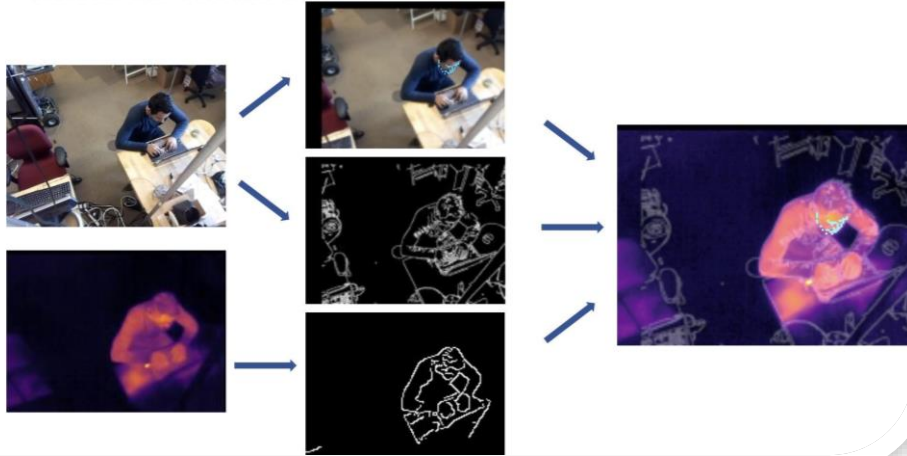


CLOUD SETUP  
IF REQUIRED

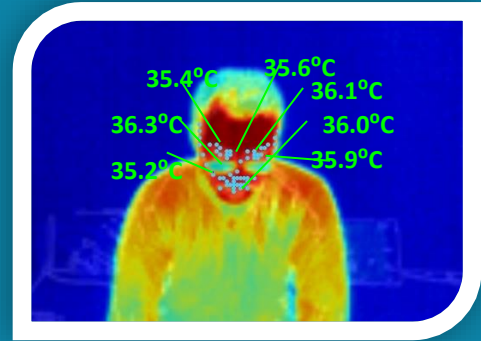




## Infrared-fused vision



Our method of Thermal image processing **uses patented AI technology** for generating Infrared Fused Vision where we can overlay a normal image over an infrared image to detect the body temperature and people recognition in the same field of view. Software also includes on-screen and **audible alerts** to identify one or more individuals in a screening situation with **visible temperature tracking, aiding rapid detection and maintaining pedestrian flow.**



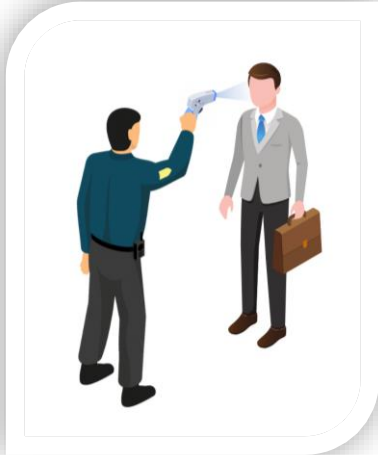
We find temperature on **multiple parts of your face** and by a combination of different points and its proprietary technology we can successfully detect **Elevated Body temperature (EBT)**.

It can also detect if you're *wearing glasses, a cap, a mask* or if you are sweating.





V / S



Manual Method	Automated Method
Non-contact Thermometers used by Security Guards	Pre-installed, patented, highly accurate and automated detection without human intervention
Laborious, time-Consuming and requires staff training	Automated, real-time and requires no staff training
Human error-prone screening	Accurate and error-free screening
No record is maintained for people entered or sent home	Detailed documentation of all inflow and people not allowed
No flags or alerts possible	Real-time flags and alerts
Inaccurate and Expensive	Highly Accurate and Cost-effective
No way to detect other people in proximity	Can detect other individuals in proximity when fever is detected
No image of the person entering	Image of person/face along with the temperature is recorded





# COMPETITOR THERMAL CAMERA SOLUTION'S

Many companies are offering fever screening solutions in the market today, however most of these companies lack accurate results. Leading to false alarms and people with fever being allowed to pass .

- Face detection error - Background pixel temperature calculated while measuring EBT of face leading to faulty reading by 1 degree celsius
- Distance error - As distance from the camera increases the error gets further magnified leading variation of another 1 degree celsius
- Expensive - Higher resolution cameras are used to compensate for inaccurate software, yet results are not satisfactory and often way off the specifications claimed by suppliers.
- Problems - Visual + thermal - Parallax problem  
Problems - thermal solution - No AI
- Proper image registration is not done. The registration of the infrared image with the visual image is not done correctly leading to missing pixels

Face is not even in the box



Queue is also good to pull a person out who has fever. A line is easy to even deal with the situation easily. How can you take a person out a large space and tell him he has fever. A line helps in many ways.





## Comparison to bigger and more expensive Systems

There are various thermopile array-based sensors available in the market, however, these sensors are primarily designed for industrial applications.

Most of them scan thousands of connections for natural gas (methane) and other hydrocarbon leaks quickly and from a safe distance to avoid regulatory violations, fines, and lost revenue.

This makes those thermal sensors extremely expensive costing between \$2000-\$10000 or more.

Our device is purpose-built and calibrated for body temperature detection that too within the parameters fever sensing range. This makes our devices relatively inexpensive and the best bang for the buck making it cost-effective for commercial applications.

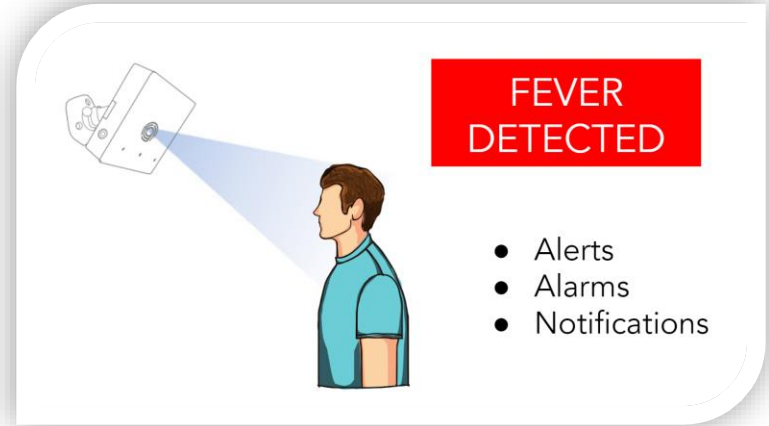


**SOCIETY**



**EDUCATIONAL  
INSTITUTES**

## APPLICATIONS



**CORPORATES &  
WORK PLACES**



**GOVT.  
INSTITUTES**



**HOTELS &  
RESTAURANTS**





# PRODUCT SPECIFICATIONS

Attribute	Value
Communication	WiFi
Power Input	DC - 12V
Power Consumption	5W
Weight	~250g
FOV	57° x 71°
Sensitivity & Resolution	0.050° C, 160 x 140
Ambient Temperature Range	-10°C to +80°C
Time to Image	<1 second
AI Face detection	Multiple targets (4 people at the same time)
Operating environment	An indoor environment with calm air conditioning, 20 - 30° C
Detection range	1.5 m person distance from the device
Fever detection accuracy	-0.5°C to +0.5°C and -0.3°C to +0.3°C with reference emitter



- ON A STAND.
- WALL MOUNTED.
- ON A DESK.



## EXISTING OR NEW SYSTEMS WHICH CAN BE INTEGRATED.

- TIME & ATTENDANCE SYSTEM
- ACCESS CONTROL SYSTEM
- VISITOR MANAGEMENT
- PARKING MANAGEMENT
- CCTV – SECURITY & SURVEILLANCE SYSTEMS

## MORE SOLUTIONS FROM US :

- SMART WORK SPACES
- OCCUPANCY MANAGEMENT SYSTEMS
- PEOPLE COUNTING & MANAGEMENT
- ELECTRICITY CONSUMPTION & AIR QUALITY



## FEW OF OUR CLIENTS



**GAIL (India) Limited**



**Mazagon Dock Shipbuilders Limited**

(Formerly known as: Mazagon Dock Limited)

CIN : U35100MH1934GOI002079

(Ministry of Defence, A Govt. of India Undertaking)

**SHIP BUILDER TO THE NATION**



**The Phoenix Mills Limited**

## CONTACT US

**livedarshan<sup>®</sup>**

[www.livedarshan.com](http://www.livedarshan.com)



Please feel free to contact us for details regarding any required solution.

**Head Office :**

Livedarshan  
Office No.41, 6<sup>th</sup> floor,  
Onlooker building,  
Sir PM Road, Fort,  
Mumbai – 400001.

**R & D Centre :**

Livedarshan  
Office No.44, 6<sup>th</sup> floor,  
Onlooker building,  
Sir PM Road, Fort,  
Mumbai – 400001.

**Contact Us:**

Mob # : 9819622446  
Off ##: 022-66359179

[varun@livedarshan.com](mailto:varun@livedarshan.com)  
[sales@livedarshan.com](mailto:sales@livedarshan.com)

