

**RAIL HEAD CONTINUITY BOND
MUGALSARAI – EAST CENTRAL RAILWAY
YEAR-2014**



Normal Rail Head
Adra – Year 2004



Rail Head
Ranchi – Year 2006



**Signal Continuity at Switches, Points and
Xing's**

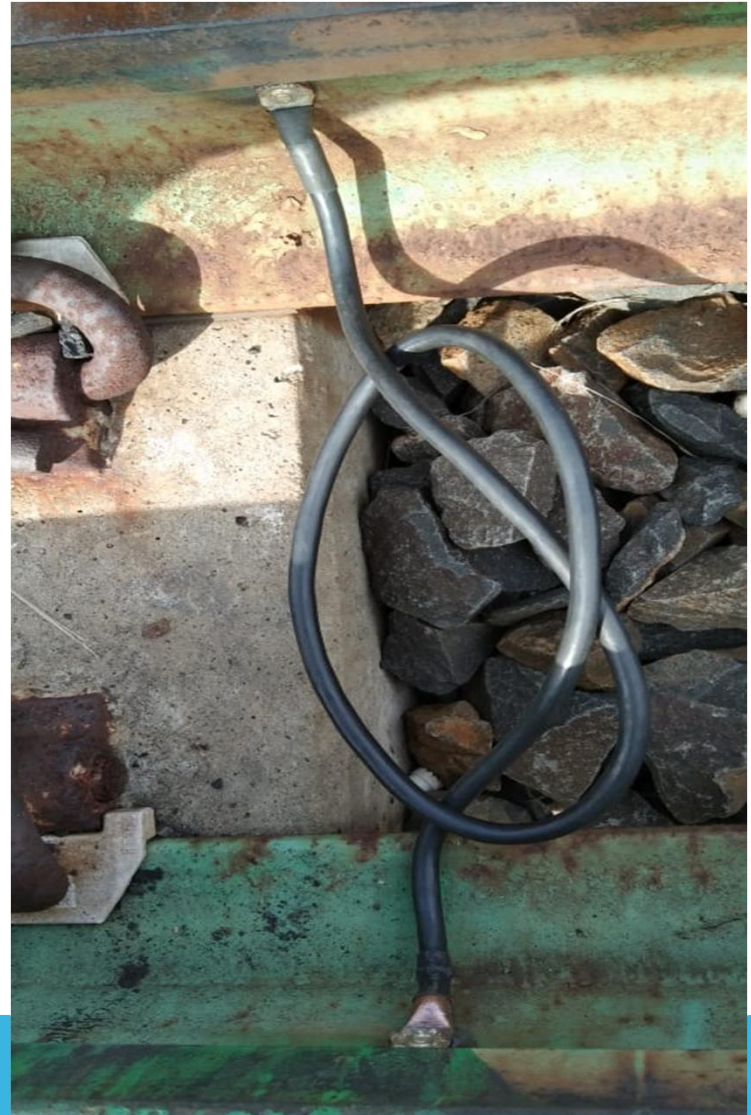


SIGNAL CONTINUITY FOR CMS XINGS
PURI – EAST COAST RAILWAY
YEAR 2006



SIGNAL CONTINUITY FOR CMS
XINGS

Kharawar – Northern Railway

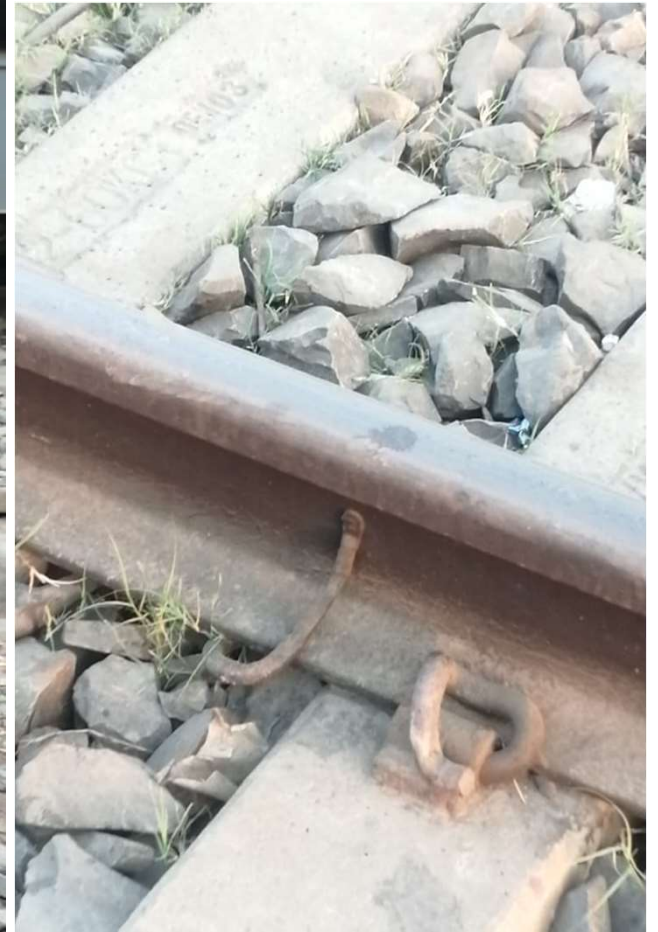


**CONTINUITY BOND INSTALLED ON TOUNGE RAIL
AT NTPC MAUDA, NAGPUR YEAR 2017 A/C RITES
LTD**

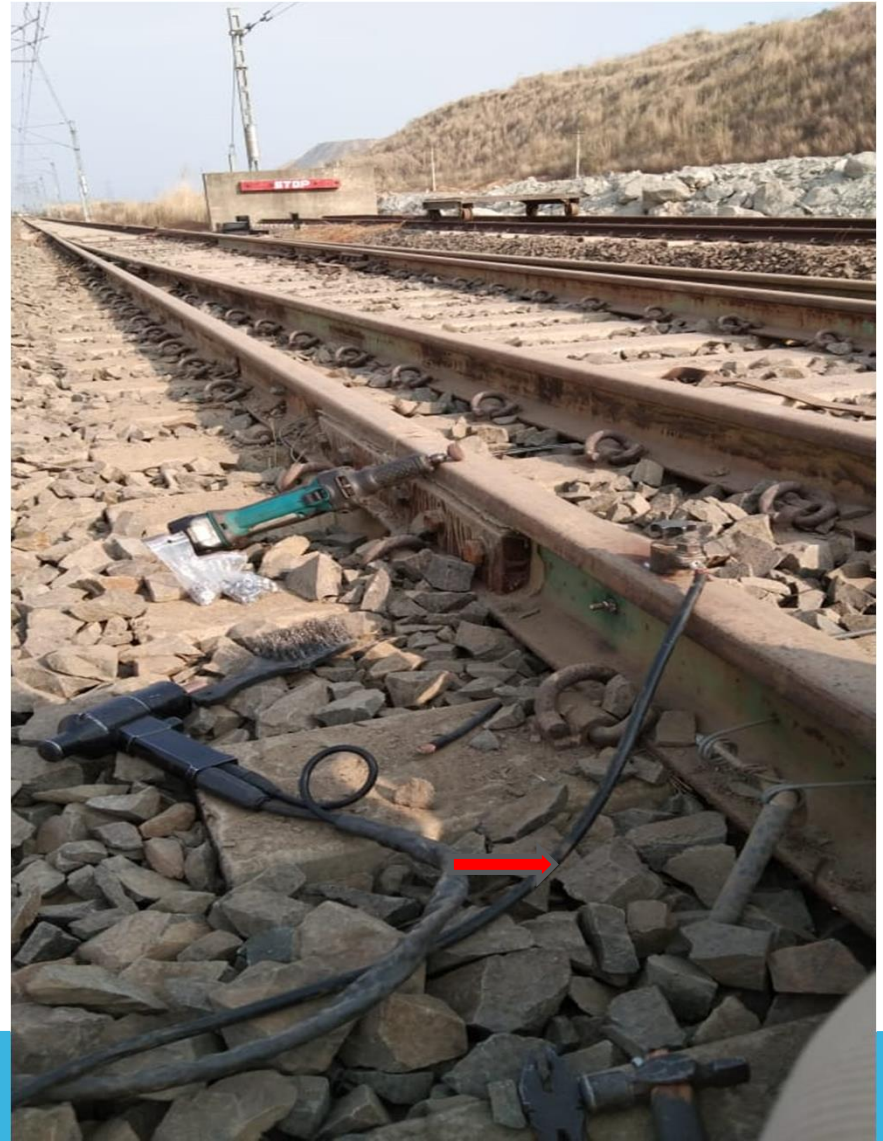
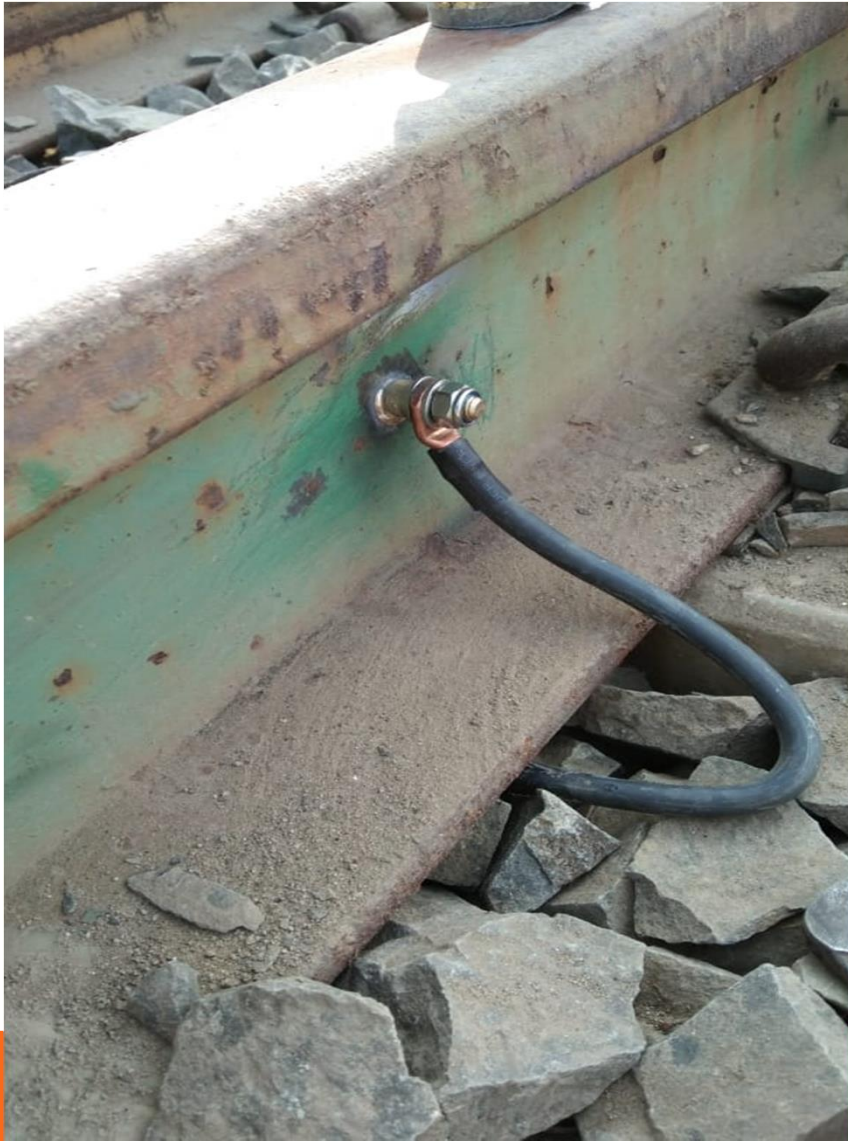


TRACK LEADJUMPER BOND

PIN BRAZED



TLJB BOND INSTALLED AT MUGALSARAI IN YEAR 2015
AND Picture captured in September 2021.



TRACK LEAD JUMPER BOND REMOVEABLE CONNECTION INSTALLED AT ASANSOL Coal field in Year 2020



**PINBRAZED CONNECTION FOR AFTC
MANDAVALI – NORTHERN RAILWAY
YEAR 2006**



Earth Bond Installed on Signal Mast at Sonpur Railway Station on 12 July 2017



Earth Bond Installed on GI earth at Sonpur Railway Station on 12 July 2017 by Pin Brazing

PIN BRAZED EARTH BOND
INSTALLED AT SONPUR JN IN 2017.



**PINBRAZED CONNECTION ON
EARTH ELECTRODE - G.I.PIPE
ROHTAK – NORTHERN RAILWAY - YEAR 2007**



EARTHING OF LOCATION BOX
GHAZIABAD – NORTHERN RAILWAY
YEAR 2006



**PIN BRAZED CONNECTION ON LOCATION BOX AT
VIVEK VIHAR, DELHI IN YEAR 2015**



EARTHING OF LEVEL CROSSING GATE
LEVER
FARIDABAD – NORTHERN RAILWAY
YEAR 2007



**REMOVAL CONNECTION FOR EARTH OF AXLE
COUNTER
FARIDABAD - NORTHERN RAILWAY
YEAR 2007**