



Quality Forged : Precision Machined



**CDT**

**DRIVELINE**

**COMPANION FLANGES**

# CDT DRIVELINE

## Companion Flanges



Quality Forged : Precision Machined

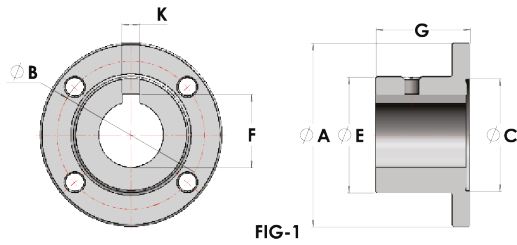


FIG-1

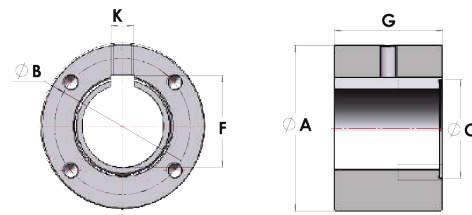


FIG-2

CDT Part No.	Neapco No.	Spicer No.	Fig.	Dim "F" Key Height	DIM "K" Key Width	DIM "D" Bore	A	B	C	E	G
CDT-31SF-SRB	N2-1-1313	2-1-1313	1	N/A	N/A	0.75	3.87	3.125	2.375	2.44	2
CDT-31SF-.875-25			1	0.987	0.25	0.875	3.87	3.125	2.375	2.44	2
CDT-31SF-1.000-25	N2-1-1313-1	2-1-1313-1	1	1.114	0.25	1	3.87	3.125	2.375	2.44	2
CDT-31SF-1.125-25	N2-1-1313-2		1	1.241	0.25	1.125	3.87	3.125	2.375	2.44	2
CDT-31SF-1.250-25	N2-1-1313-3	2-1-1313-3	1	1.367	0.25	1.25	3.87	3.125	2.375	2.44	2
CDT-31SF-1.250-31	N2-1-1313-4	2-1-1313-4	1	1.392	0.313	1.25	3.87	3.125	2.375	2.44	2
CDT-31SF-1.375-31	N2-1-1313-5	2-1-1313-5	1	1.518	0.313	1.375	3.87	3.125	2.375	2.44	2
CDT-31SF-1.375-37	N2-1-1313-6		1	1.541	0.375	1.375	3.87	3.125	2.375	2.44	2
CDT-31SF-1.437-37	N2-1-1313-7	2-1-1313-7	1	1.606	0.375	1.438	3.87	3.125	2.375	2.44	2
CDT-31SF-1.500-37	N2-1-1313-8	2-1-1313-8	1	1.669	0.375	1.5	3.87	3.125	2.375	2.44	2
CDT-31SF-1.625-37	N2-1-1313-9	2-1-1313-9	1	1.796	0.375	1.625	3.87	3.125	2.375	2.44	2
CDT-31SF-1.687-37			1	1.859	0.375	1.688	3.87	3.125	2.375	2.44	2
CDT-31SF-28MMX8MM			1	1.242	0.315	1.102	3.87	3.125	2.375	2.44	2
CDT-31SLF-SRB	N2-1-1323	2-1-1323	2	N/A	N/A	1.25	3.875	3.125	2.375	N/A	2.5
CDT-31SLF-1.750-37	N2-1-1323-1	2-1-1323-1	2	1.917	0.375	1.75	3.875	3.125	2.375	N/A	2.5
CDT-31SLF-2.000-50	N2-1-1323-4		2	2.218	0.5	2	3.875	3.125	2.375	N/A	2.5
CDT-31SLF-2.250-50			2	2.472	0.5	2.25	3.875	3.125	2.375	N/A	2.5
CDT-35SF-SRB	N3-1-1013	3-1-1013	1	N/A	N/A	1	4.557	3.75	2.75	2.87	2
CDT-35SF-1.250-25	N3-1-1013-3	3-1-1013-3	1	1.367	0.25	1.25	4.557	3.75	2.75	2.87	2
CDT-35SF-1.250-31	N3-1-1013-4	3-1-1013-4	1	1.392	0.313	1.25	4.557	3.75	2.75	2.87	2
CDT-35SF-1.375-37	N3-1-1013-6	3-1-1013-6	1	1.541	0.375	1.375	4.557	3.75	2.75	2.87	2
CDT-35SF-1.437-37	N3-1-1013-7	3-1-1013-7	1	1.606	0.375	1.438	4.557	3.75	2.75	2.87	2
CDT-35SF-1.500-37	N3-1-1013-8	3-1-1013-8	1	1.669	0.375	1.5	4.557	3.75	2.75	2.87	2
CDT-35SF-1.625-37	N3-1-1013-9	3-1-1013-9	1	1.796	0.375	1.625	4.557	3.75	2.75	2.87	2
CDT-35SF-1.687-37			1	1.859	0.375	1.688	4.557	3.75	2.75	2.87	2
CDT-35SF-1.750-37	N3-1-1013-10	3-1-1013-10	1	1.922	0.375	1.75	4.557	3.75	2.75	2.87	2
CDT-35SF-1.875-37	N3-1-1013-11	3-1-1013-11	1	2.049	0.375	1.875	4.557	3.75	2.75	2.87	2
CDT-35SLF-LRB	N3-1-1023	3-1-1023	2	N/A	N/A	1.5	4.557	3.75	2.75	N/A	3

Continue next page

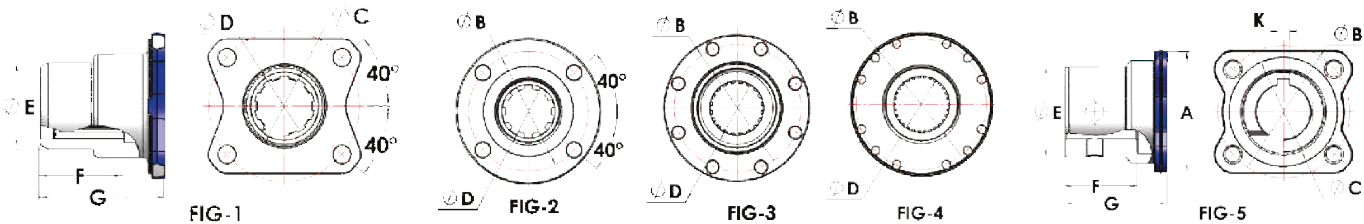
# CDT DRIVELINE

## Companion Flanges



Quality Forged : Precision Machined

CDT Part No.	Neapco No.	Spicer No.	Fig.	Dim "F" Key Height	DIM "K" Key Width	DIM "D" Bore	A	B	C	E	G
CDT-35SLF-2.000-50	N3-1-1023-1	3-1-1023-1	2	2.223	0.5	2	4.557	3.75	2.75	N/A	3
CDT-35SLF-2.125-50	N3-1-1023-2	3-1-1023-2	2	2.35	0.5	2.125	4.557	3.75	2.75	N/A	3
CDT-35SLF-2.375-62	N3-1-1023-4	3-1-1023-4	2	2.651	0.625	2.375	4.557	3.75	2.75	N/A	3
CDT-35SLF-2.500-50			2	2.73	0.5	2.5	4.557	3.75	2.75	N/A	3
CDT-48SF-SRB	N4-1-1133	4-1-1133	1	N/A	N/A	1.25	5.87	4.75	3.75	3.75	2.5
CDT-48SF-1.500-37	N4-1-1133-1	4-1-1133-1	1	1.669	0.375	1.5	5.87	4.75	3.75	3.75	2.5
CDT-48SF-1.750-37	N4-1-1133-3	4-1-1133-3	1	1.922	0.375	1.75	5.87	4.75	3.75	3.75	2.5
CDT-48SF-1.875-37	N4-1-1133-4		1	2.049	0.375	1.875	5.87	4.75	3.75	3.75	2.5
CDT-48SF-2.000-50	N4-1-1133-6	4-1-1133-6	1	2.223	0.5	2	5.87	4.75	3.75	3.75	2.5
CDT-48SLF-LRB	N4-1-1143	4-1-1143	2	N/A	N/A	1.5	5.87	4.75	3.75	N/A	3
CDT-48SLF-2.500-62	N4-1-1143-1	4-1-1143-1	2	2.773	0.625	2.5	5.87	4.75	3.75	N/A	3
CDT-61SF-SRB	N5-1-873	5-1-873	1	N/A	N/A	1.25	6.87	6.125	6.625	5.245	3.5
CDT-61SF-2.500-62	N5-1-873-6		1	2.778	0.625	2.5	6.87	6.125	6.625	5.245	3.5
CDT-61SF-65MM-18MM			1	2.868	0.709	2.559	6.875	6.125	6.625	5.25	3.5
CDT-61SF-70MM-20MM			1	3.097	0.787	2.756	6.875	6.125	6.625	5.25	3.5
CDT-61SLF-LRB	N5-1-883	5-1-883	2	N/A	N/A	2	6.87	6.125	6.625	N/A	4
CDT-71SF-SRB	N6-1-1253	6-1-1253	1	N/A	N/A	1.25	8	7.25	7.75	6.38	4
CDT-71SF-3.000-75	N6-1-1253-5		1	3.332	0.75	3	8	7.25	7.75	6.38	4
CDT-71SLF-LRB	N6-1-1263		2	N/A	N/A	2	8	7.25	7.75	N/A	5
CDT-81SLF-LRB	N6.5-1-543		2	N/A	N/A	2	8	7.25	7.75	N/A	6
CDT-88SF-3.000-75			1	3.327	0.75	3	9.625	8.25	7	6.875	5



CDT Part No.	Neapco No.	Spicer No.	Fig.	A	B	C	D	E	F	G	K
CDT-1000-1-143		1-1-143	5	3.5	2.75	2.25	1	1.875	1.5	2.125	0.25
CDT-1000-1-153		1-1-153	5	3.5	2.75	2.25	1.125	1.875	1.5	2.125	0.25
CDT-1000-1-273	N1-1-273	1-1-273	5	3.5	2.75	2.25	1.25	1.875	1.5	2.125	0.312
CDT-1000-1-293	N10-1-1022-2	1-1-293	5	3.5	2.75	2.25	0.875	1.875	1.5	2.125	0.25
CDT-1710-1-1731			3	8	7.25	7.75	2.225-6SPL	3	3.25	3.75	N/A
CDT-1810-1-741			4	8	7.25	7.75	2.750-10SPL	3.5	3	4.063	N/A

Please contact us for additional sizes/styles not listed

