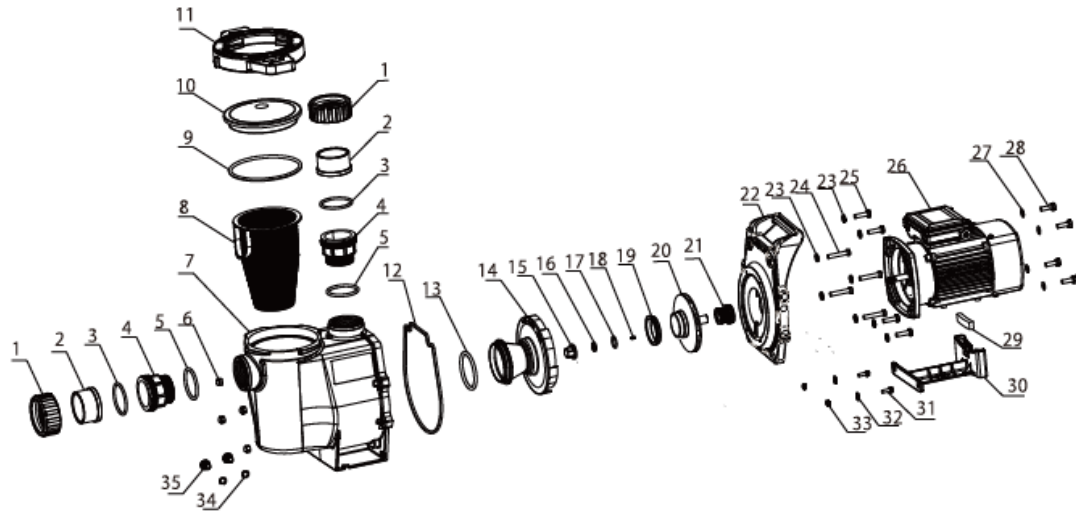


# CRYSTAL SPINEL PUMP

## **SWIMMING POOL PUMP SERIES**



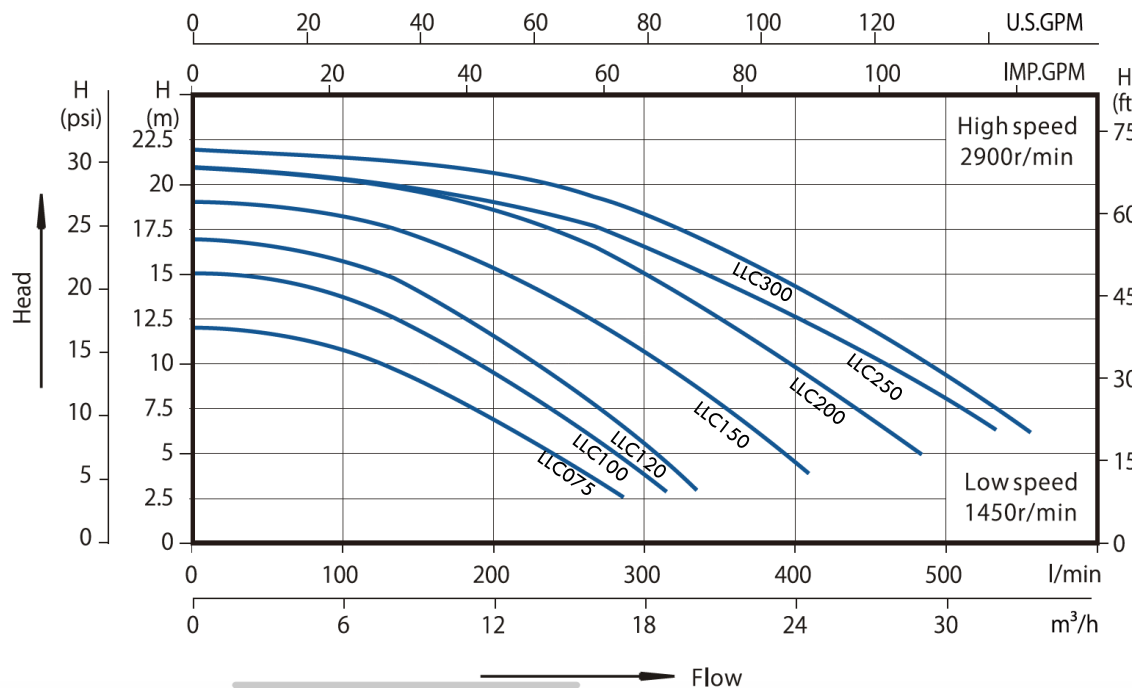
# Lilac Series (LLC)



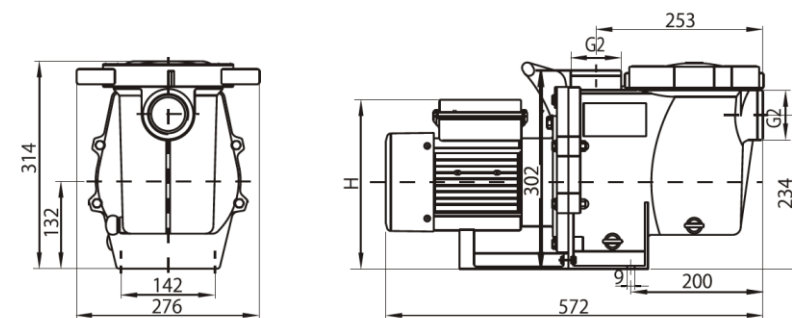
NO	Description	NO	Description	NO	Description	NO	Description
1	Tie-in nut	10	Transparent Cover	19	Activities Rings	28	Hexagon Screw
2	Tie	11	Gland Cover	20	Impeller	29	Plastic Strips
3	O-Ring	12	Gasket	21	Mechanical Seal	30	Base
4	Transition Union	13	O-Ring	22	Pump Cover	31	Hexagon Screw
5	O-Ring	14	Guide Vane	23	Washer	32	Washer
6	Acorn Nut	15	Impeller Nut	24	Hexagon Screw	33	Hexagon Nut
7	Pump Casing	16	Spring Washer	25	Hexagon Screw	34	O-Ring
8	Filter	17	O-Ring	26	Motor	35	Drainage Plug
9	O-Ring	18	Flat Key	27	Washer		



# Lilac Series - LLC

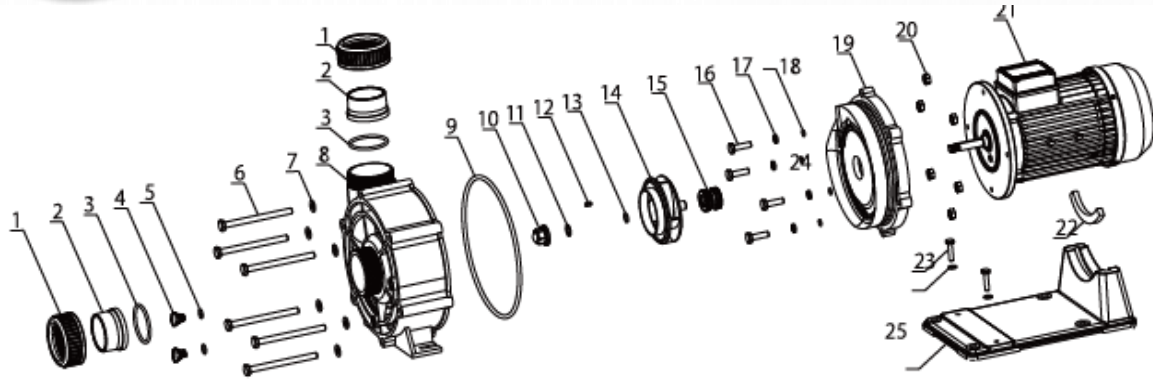


Model	Capacity	mH	V/Hz	Power(P1)		Amps	Fitting size	Weight	Packing Size
	L/min	m	V/Hz	kW	HP	A	mm	kg	mm³
LLC075	285	12	220-240/50	0.55	0.75	3.2	63	14.6	630 x 295 x 400
LLC100	315	15	220-240/50	0.75	1.00	3.8	63	15.5	630 x 295 x 400
LLC120	335	17	220-240/50	0.90	1.20	4.6	63	16.3	630 x 295 x 400
LLC150	400	19	220-240/50	1.10	1.50	5.2	63	17.3	630 x 295 x 400
LLC200	480	21	220-240/50	1.50	2.00	7.0	63	18.3	630 x 295 x 400
LLC250	530	21	220-240/50	1.85	2.50	8.6	63	20.4	630 x 295 x 400
LLC300	550	22	220-240/50	2.20	3.00	10	63	21.6	630 x 295 x 400



Model	H	Model	H
	m		m
LLC075	243	LLC200	246
LLC100	243	LLC250	258
LLC120	243	LLC300	258
LLC150	243		

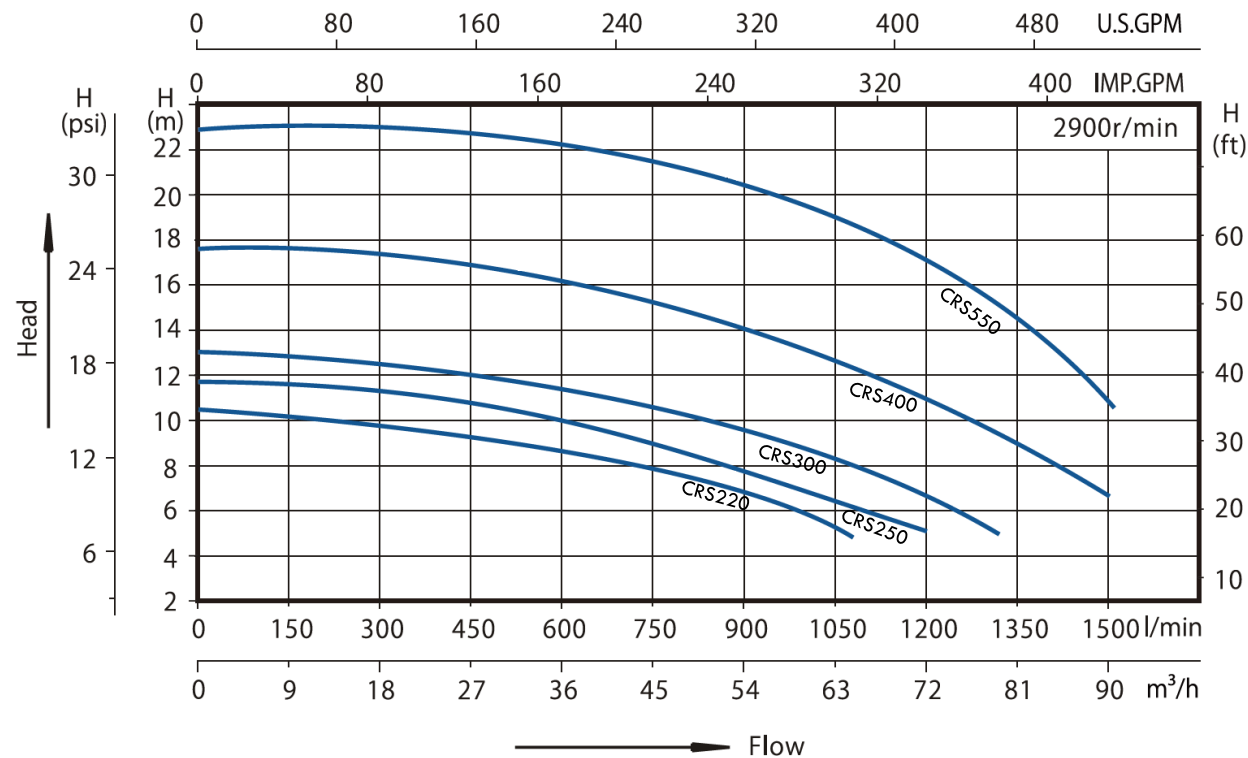
# Crimson Series (CRS)



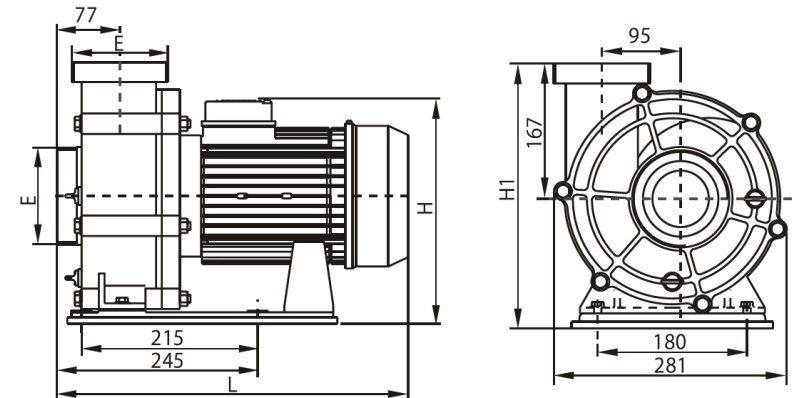
NO	Description	NO	Description	NO	Description	NO	Description
1	Tie-in nut	8	Pump Casing	15	Mechanical Seal	22	Plastic Strips
2	Tie	9	O-Ring	16	Hexagon Screw	23	Hexagon Screw
3	O-Ring	10	Impeller Nut	17	Seal Gasket	24	Washer
4	Injection or <u>Drainage</u> Plug	11	Light Spring Pad	18	O-Ring	25	Base
5	O-Ring	12	Flat Key	19	Pump Cover		
6	Hexagon Screw	13	O-Ring	20	Nut		
7	Washer	14	Impeller	21	Motor		



# Crimson Series - CRS

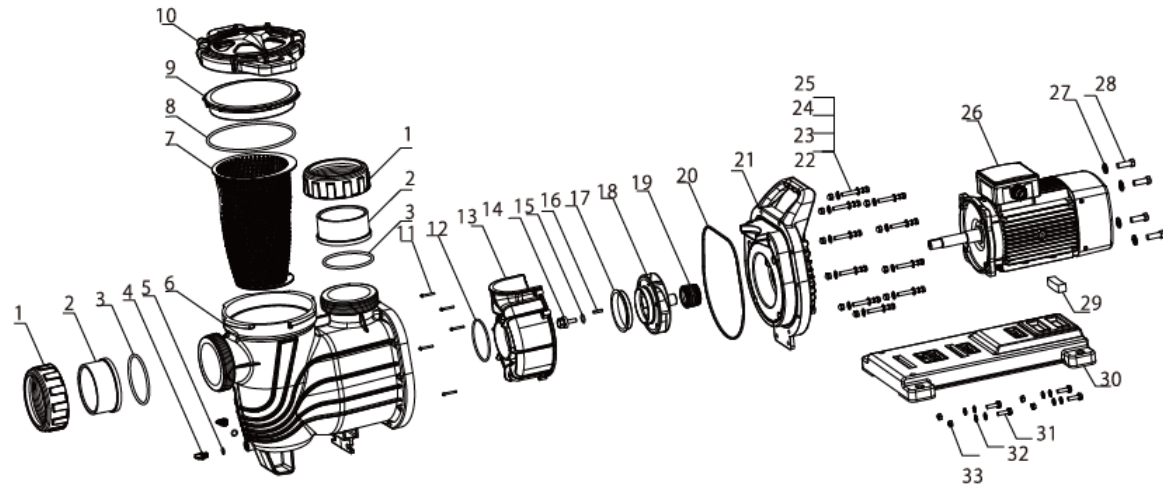


Model	Capacity	mH	Power(P1)		Amps(A)		Fitting Size(mm)			Weight	Packing Size
	L/min	m	kW	HP	220v/50HZ	380V/50HZ	2.5"	3"	4"	kg	mm³
CRS220	1100	11	2.2	3.0	10	4.1	73 75 76	88.9 90	110 114.3	23.2	445 x 310 x 360
CRS250	1210	11.5	2.5	3.5	13.7	4.9				24.4	445 x 310 x 360
CRS300	1300	13	3.0	4.0	-	5.6				23.9	445 x 310 x 360
CRS400	1500	17.5	4.0	5.5	-	7.0				25.6	475 x 310 x 360
CRS550	1500	23	5.5	7.5	-	9.6				28.0	510 x 310 x 400



Model	L	H	H1	E
	mm	mm	mm	mm
CRS220	412	274	323	G2.75
CRS250	412	274	323	
CRS300	412	274	323	G4
CRS400	429	274	323	
CRS550	469	316	335	

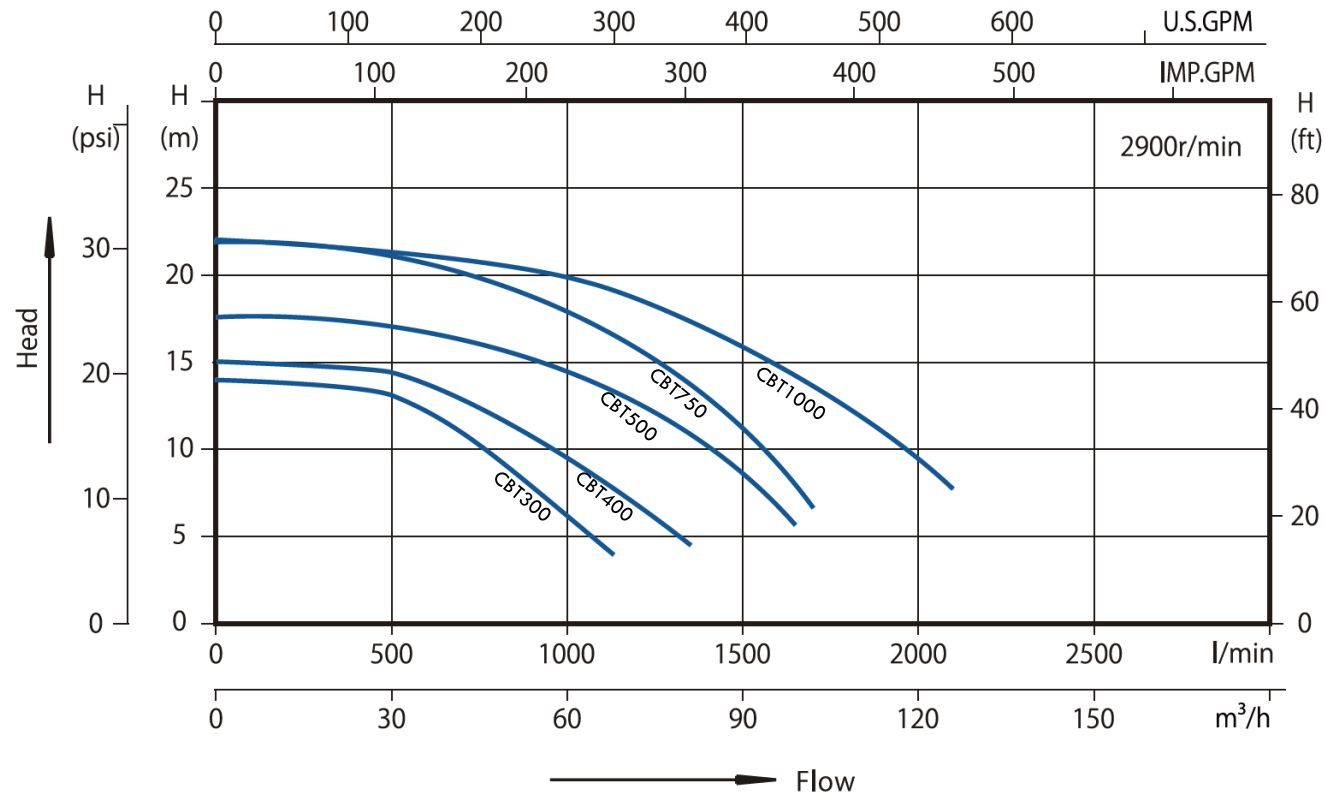
# Cobalt Series (CBT)



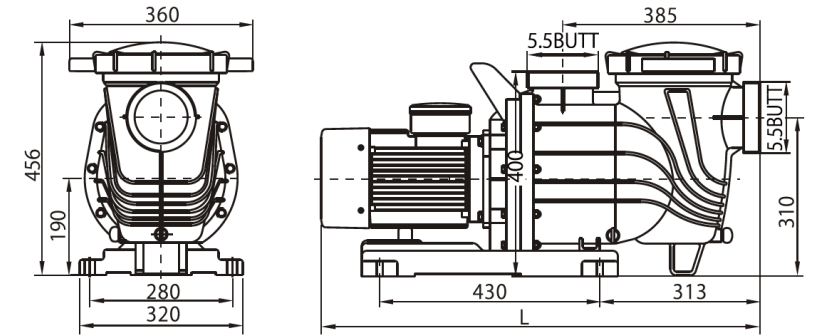
NO	Description	NO	Description	NO	Description	NO	Description
1	Tie-in nut	10	Gland Cover	19	Mechanical Seal	28	Hexagon Bolt
2	Tie	11	Pan Head Screws	20	Gasket	29	Floor Rubber nat
3	O-Ring	12	O-Ring	21	Pump Cover	30	Base
4	Plug	13	Volute	22	Spring Washer	31	Hexagon Bolt
5	O-Ring	14	Impeller Nut	23	Washer	32	Washer
6	Pump Casing	15	O-Ring	24	Acorn Nut	33	Hexagon Nut
7	Filter	16	Flat Key	25	Hexagon Bolt		
8	O-Ring	17	Activities Rings	26	Motor		
9	Transparent Cover	18	Impeller	27	Washer		



# Cobalt Series - CBT



Model	Capacity	mH	Power(P1)		Amps(A)	Fitting size(mm)		Weight	Packing Size
	L/min	m	kW	HP	380V/50HZ	3"	4"	kg	mm³
CBT300	1080	14	2.2	3.0	4.1	88.9	110.0	45.5	840 x 395 x 600
CBT400	1300	15	3.0	4.0	5.2			47.0	840 x 395 x 600
CBT500	1580	17	4.0	5.0	8.2			54.5	900 x 395 x 600
CBT750	1700	22	5.5	7.5	9.6			60.3	900 x 395 x 600
CBT1000	2100	21.5	7.5	10.0	11.1			64.5	900 x 395 x 600



Model	H
	mm
CBT300	800
CBT400	800
CBT500	857
CBT750	857
CBT1000	887