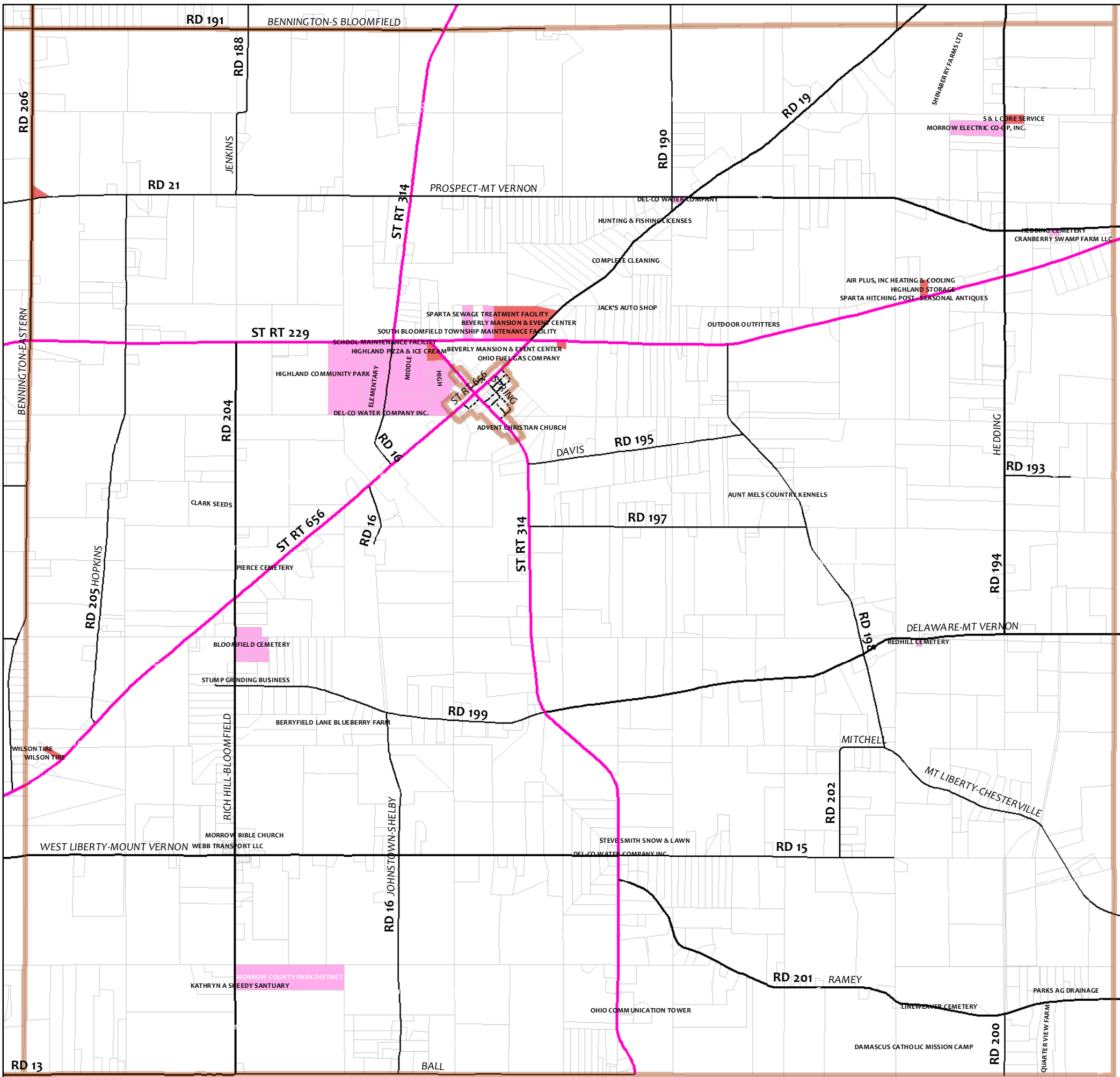
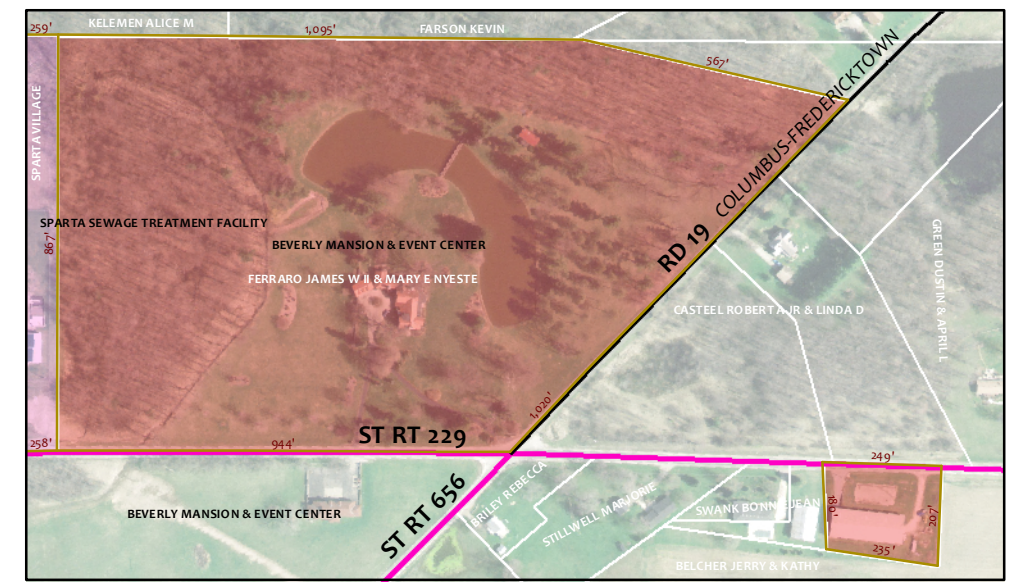
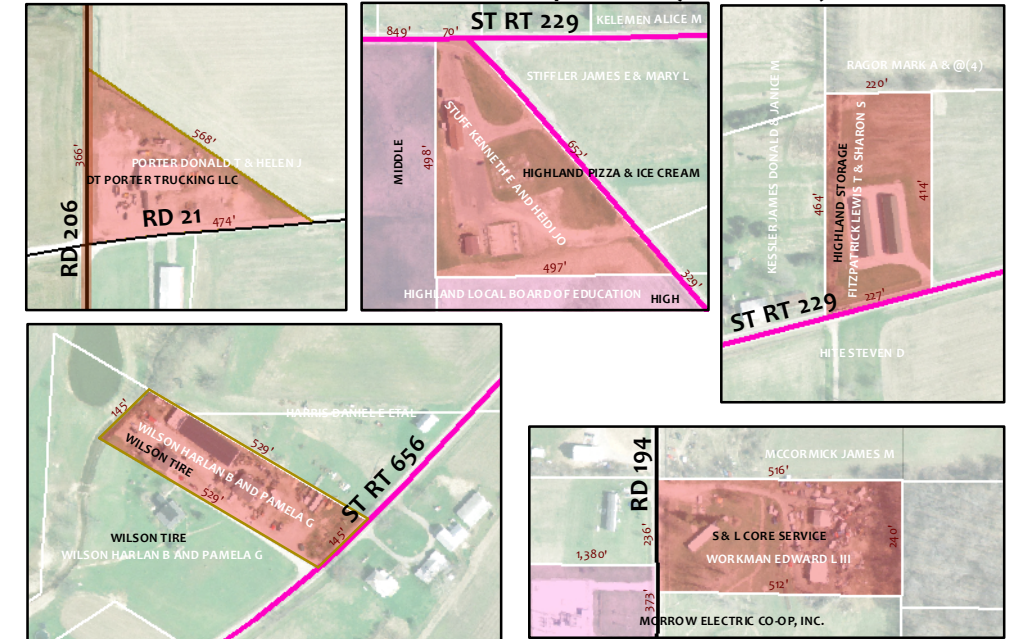


# South Bloomfield Township Zoning Map

Morrow County, Ohio | Effective: August 21, 2018

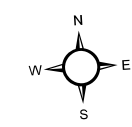


## Details of C-1 Zoned Properties (1" = 400')

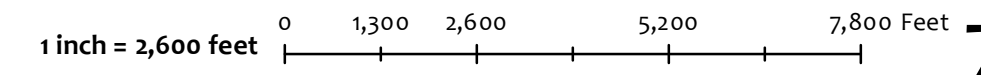


### Legend

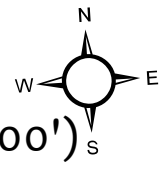
- Jurisdictional Boundaries
- County Road
- Municipal Streets
- Private Roads
- State Route
- Township Road
- AR-1
- C-1
- M-1
- S-1



**Plan4Land**  
CONSERVATION | DEVELOPMENT | POLICY | ZONING  
[WWW.PLAN4LAND.NET](http://WWW.PLAN4LAND.NET)



Data Source(s): Road Centerline & Parcels from Morrow County Engineer, Aerial Photograph from OGRIP project.

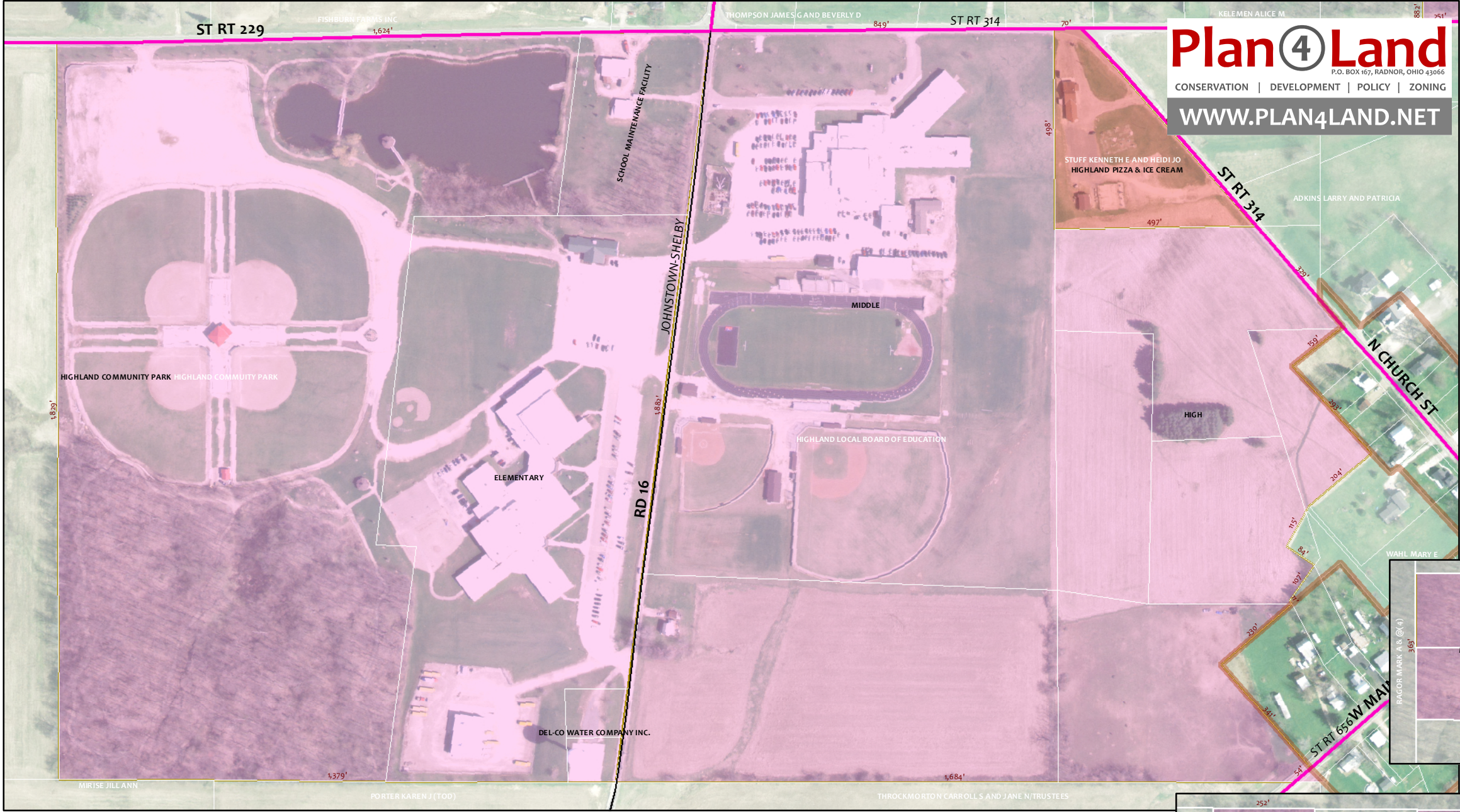


# South Bloomfield Township Zoning Map

0 150 300 600 900 Feet

Details of S-1 Zoned Properties (1" = 300')

Morrow County, Ohio | Effective Date: August 21, 2018 Road Centerline & Parcels from Morrow County Engineer, Aerial Photograph from OGRIP project.



**Plan4Land**  
 P.O. BOX 167, RADNOR, OHIO 43066  
 CONSERVATION | DEVELOPMENT | POLICY | ZONING  
 WWW.PLAN4LAND.NET

## Legend

- Jurisdictional Boundaries
- County Road
- Municipal Streets
- Private Roads
- State Route
- Township Road
- AR-1
- C-1
- M-1
- S-1

