



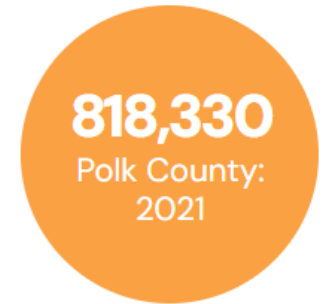
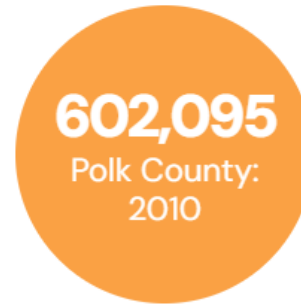
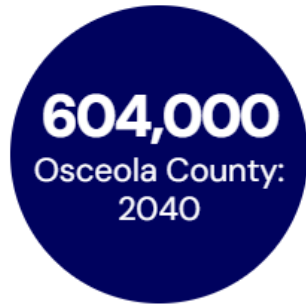
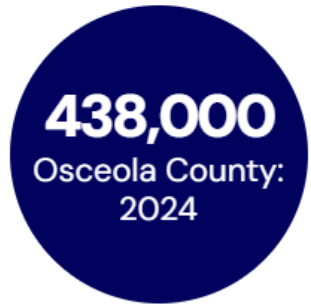
**CENTRAL
FLORIDA
EXPRESSWAY
AUTHORITY**

Southport Connector Expressway Project Development and Environment Study

**SCAR Leadership
September 20, 2024**

Community Challenges – Project Need

POPULATION



25% INCREASE
OF VEHICLES PER DAY ON CYPRESS
PARKWAY FROM 2019 TO 2024



11,000 MORE HOMES
OSCEOLA COUNTY REVIEWING
DEVELOPMENT PLANS FOR ADDITIONAL
SINGLE FAMILY HOMES IN THE NEXT 5-10
YEARS

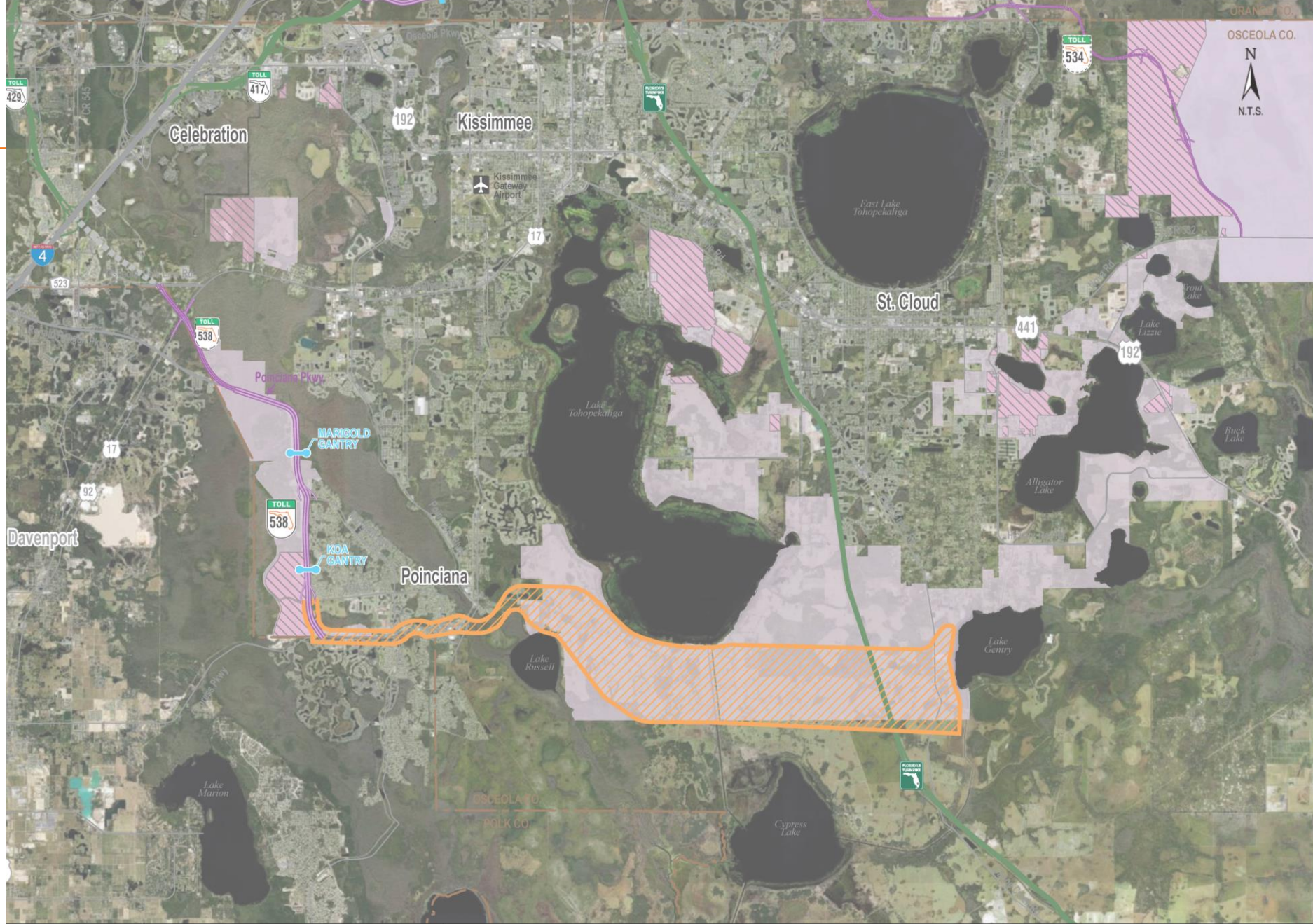
Development Plans

Osceola County continues to be attractive for building new communities and commercial properties

Orange Cross-hatch:
Study Area

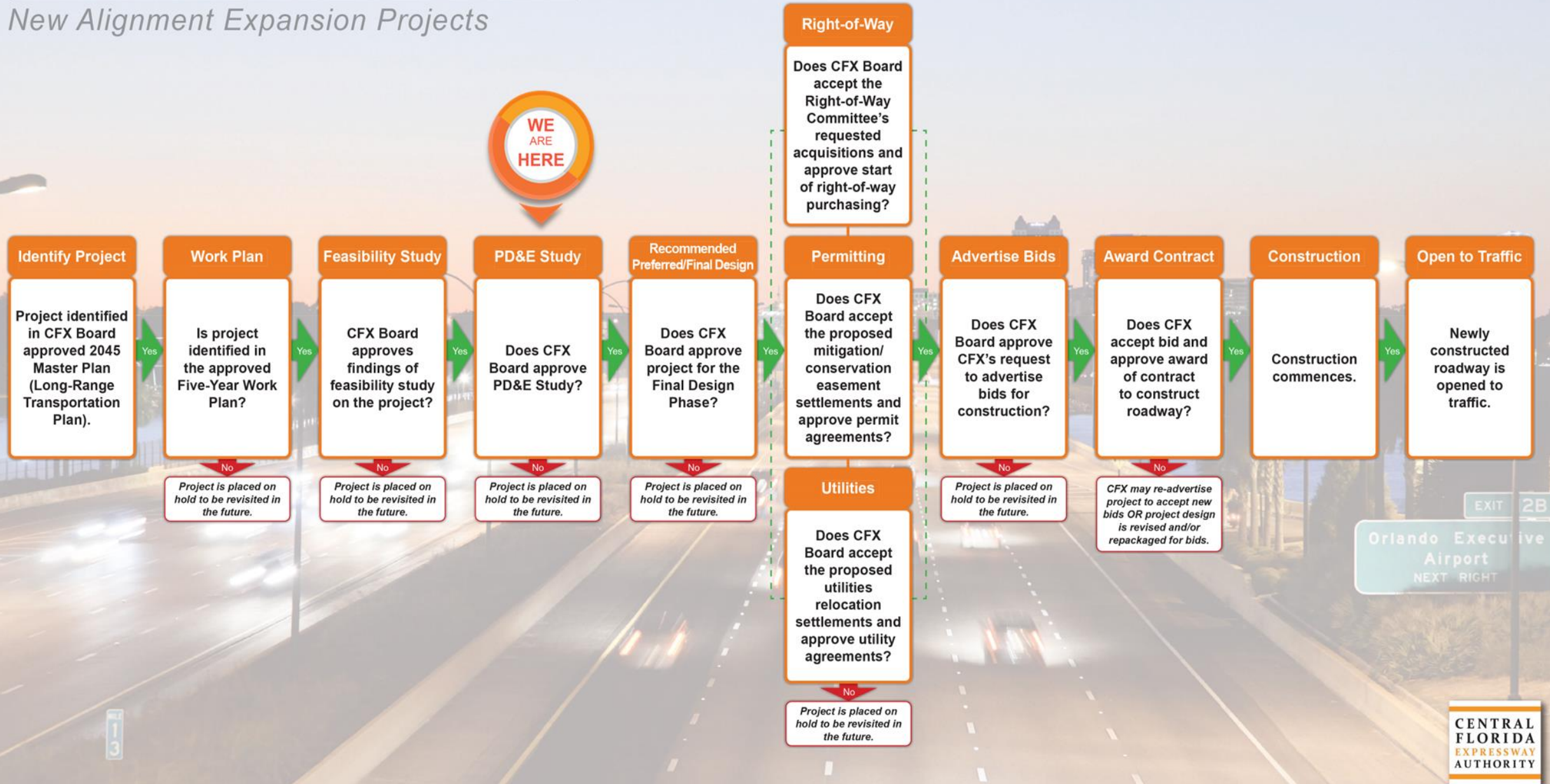
Lavender:
Future Development

Lavender Cross-hatch:
Development underway or approved site plans

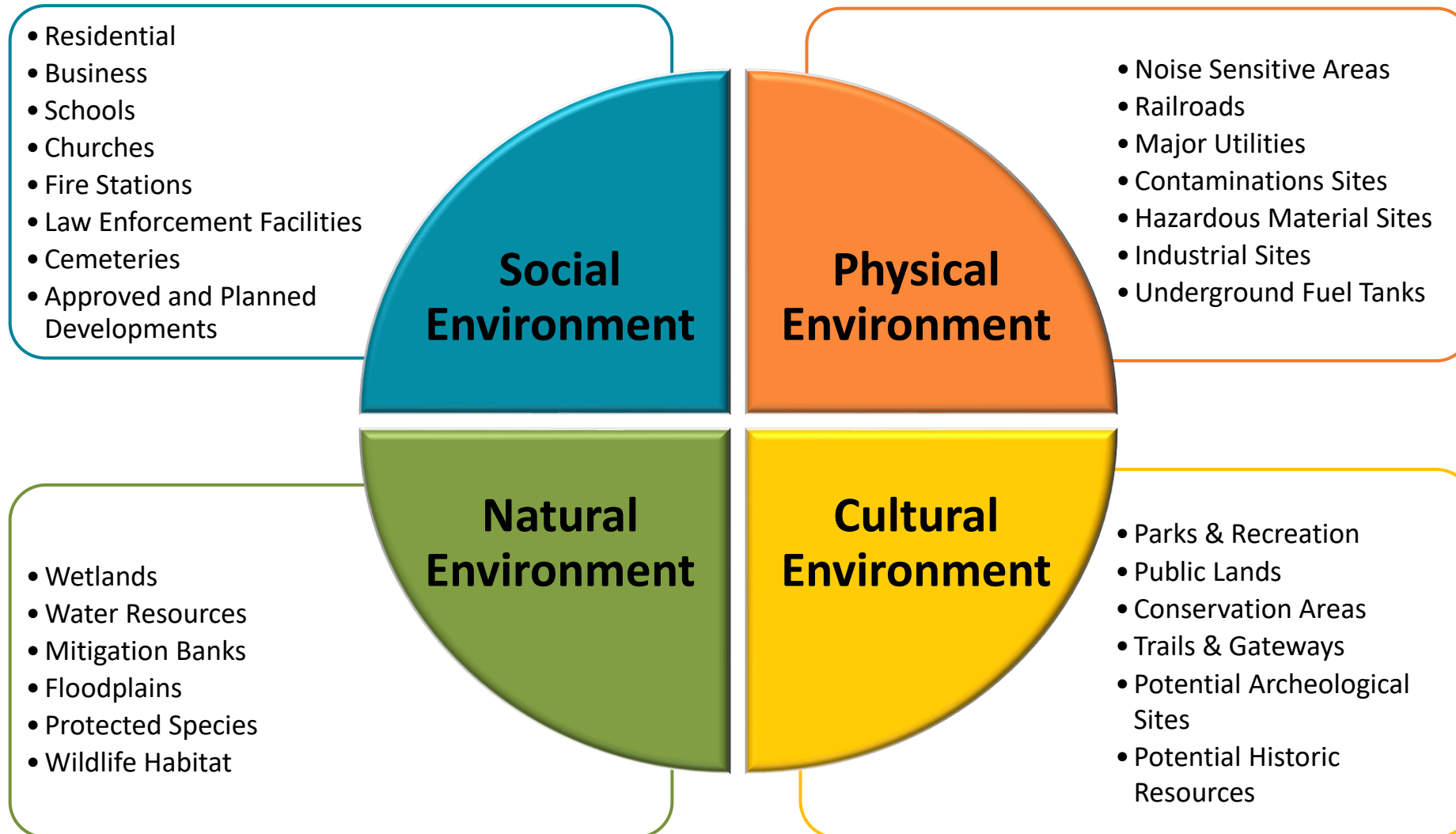


PROJECT DEVELOPMENT PROCESS

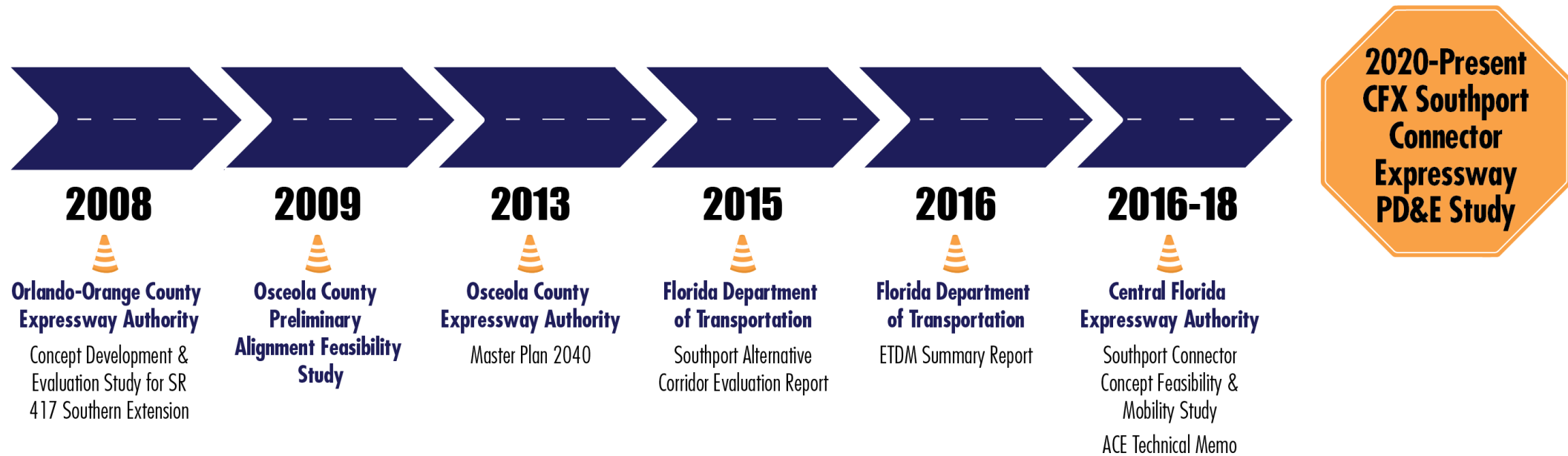
New Alignment Expansion Projects



PD&E Study Evaluation Criteria

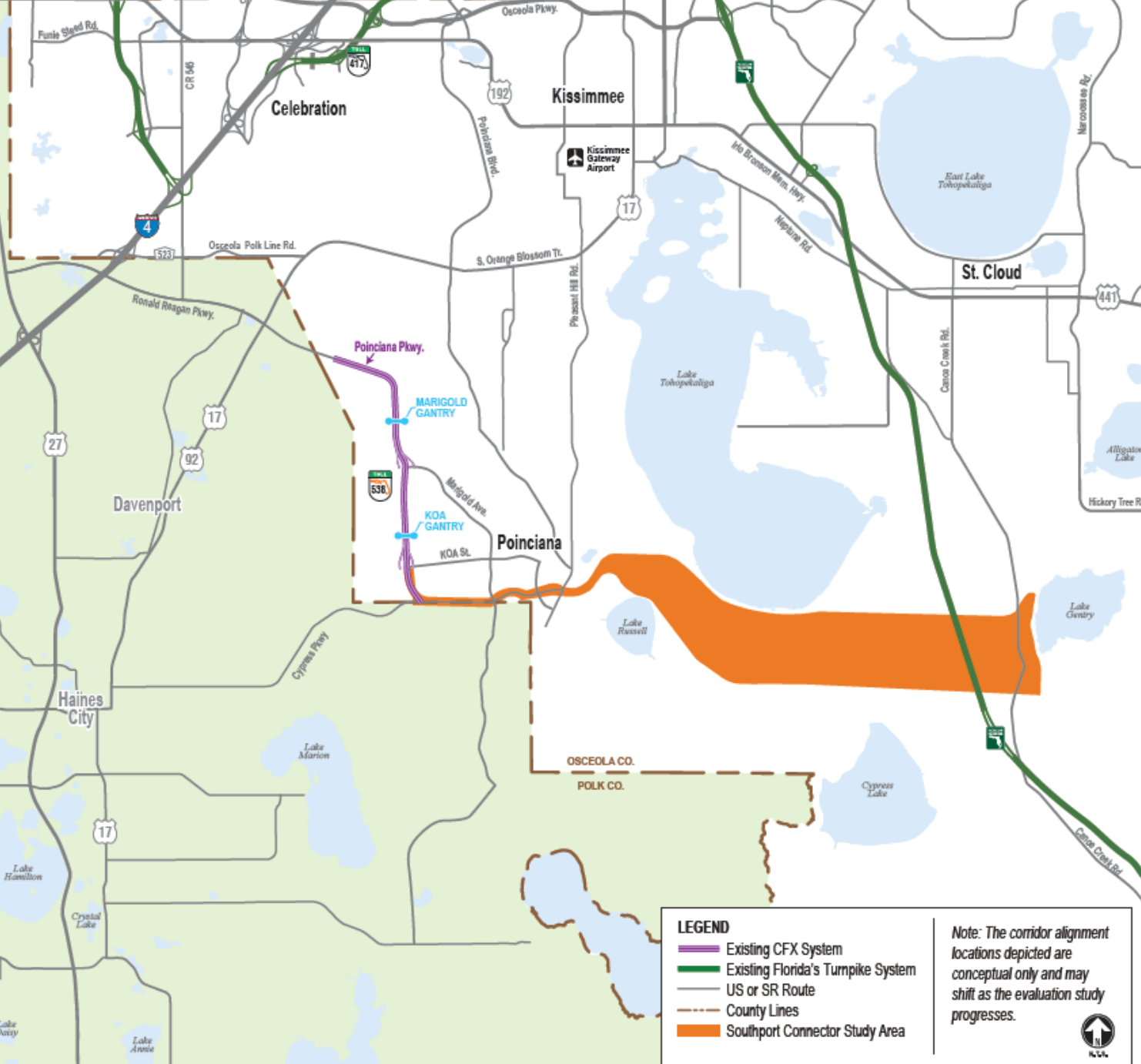


Project History



Study Area

- Proposed 15-mile expressway
- Osceola and Polk Counties
- Study Limits
 - Co-located along Cypress Parkway from Poinciana Parkway to Pleasant Hill Road
 - Continues east on a new alignment to Florida's Turnpike and Canoe Creek Road



Project Priorities



Relieve congestion on local roads



Promote regional connectivity between Florida's Turnpike and Interstate 4



Balance regional needs with community concerns



Enhance evacuation and emergency response



Provide multimodal opportunities including a multi-use trail



Support economic development



Finding Solutions: Project Overview

CFX is investing in the Poinciana community – seeking solutions to benefit everyone!

Proposed improvements: Could help relieve traffic tie-ups along Cypress Parkway – and more:

- **Easier Local Trips:**
 - Widening Cypress Parkway to six lanes
- **Elevated Expressway along Cypress Parkway:**
 - Commuters and others could make longer trips more quickly
- **Elevated Options:**
 - Wall, bridge structure or hybrid alternatives



MOVE
POINCIANA

CENTRAL
FLORIDA
EXPRESSWAY
AUTHORITY

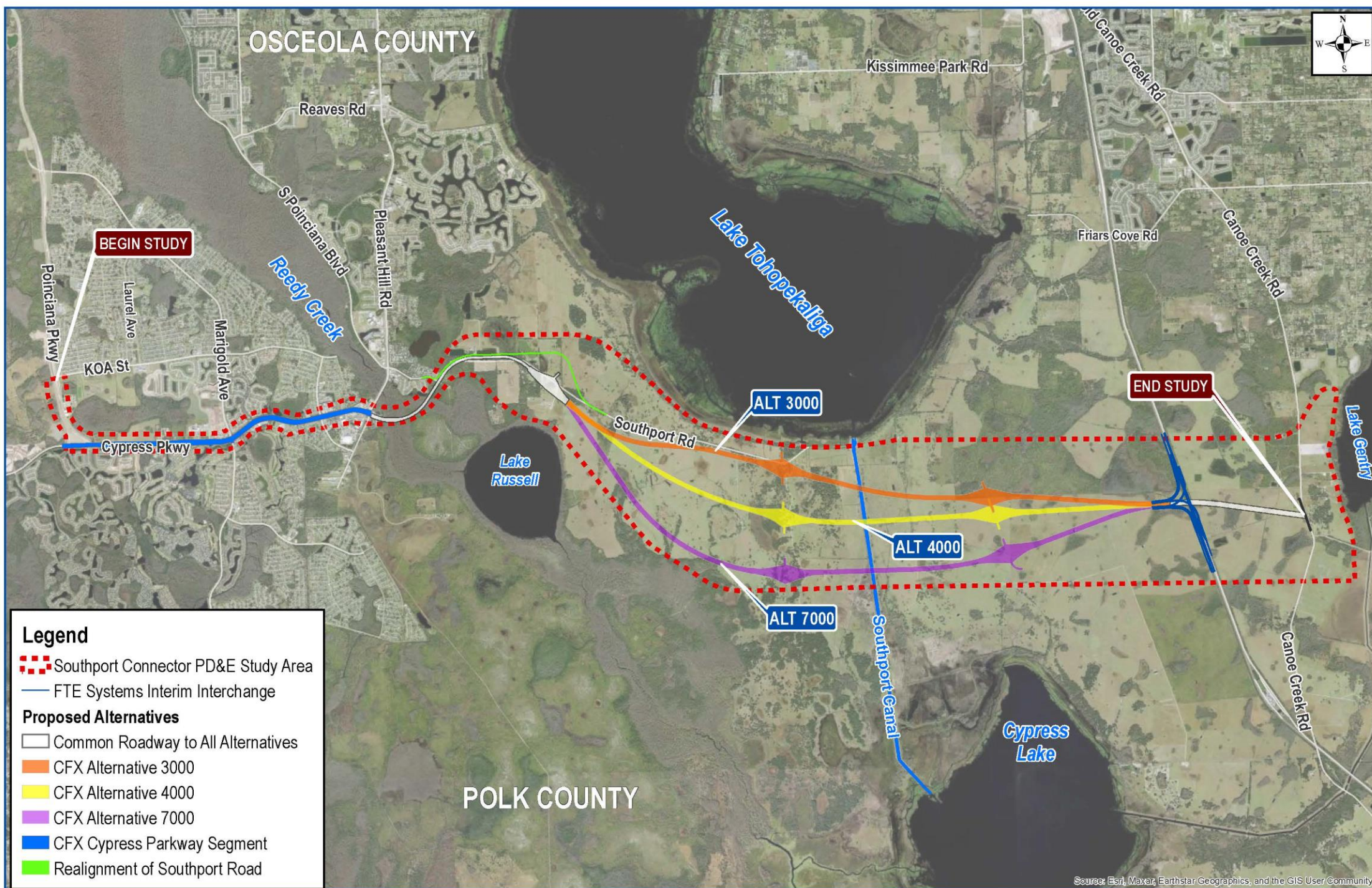
Finding Solutions: Project Overview

- **Improvements for Pedestrians and Motorists:**
 - Multi-use trail
 - Upgrades to eight (8) intersections
 - Enhancing safety
- **Caring for the Community:**
 - Landscaping and other amenities being considered
 - Reviewing noise, light, other impacts
- **Environmental Stewardship**
 - Agency and advocacy coordination



MOVE
POINCIANA

OSCEOLA COUNTY



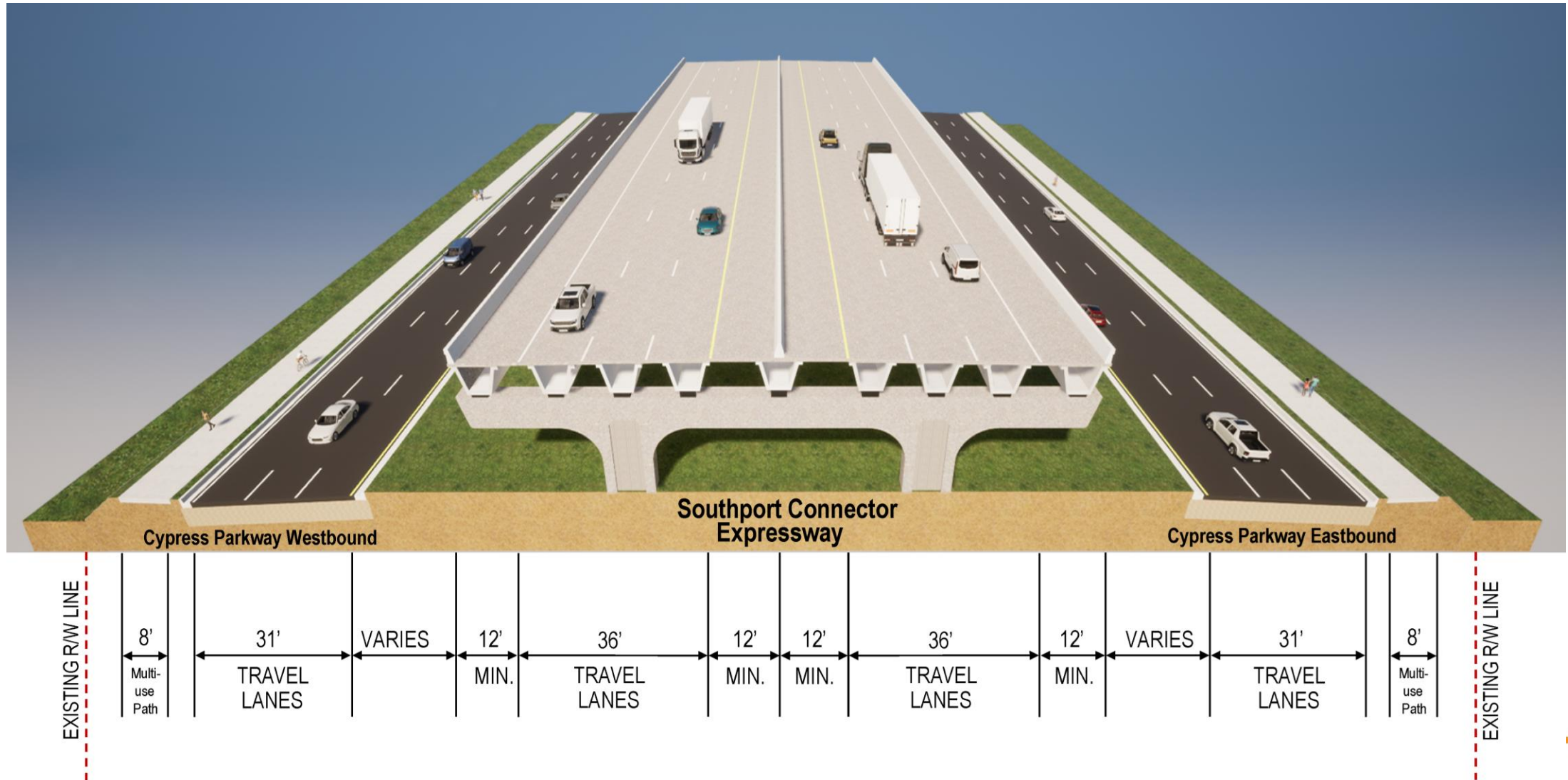
POLK COUNTY

Legend

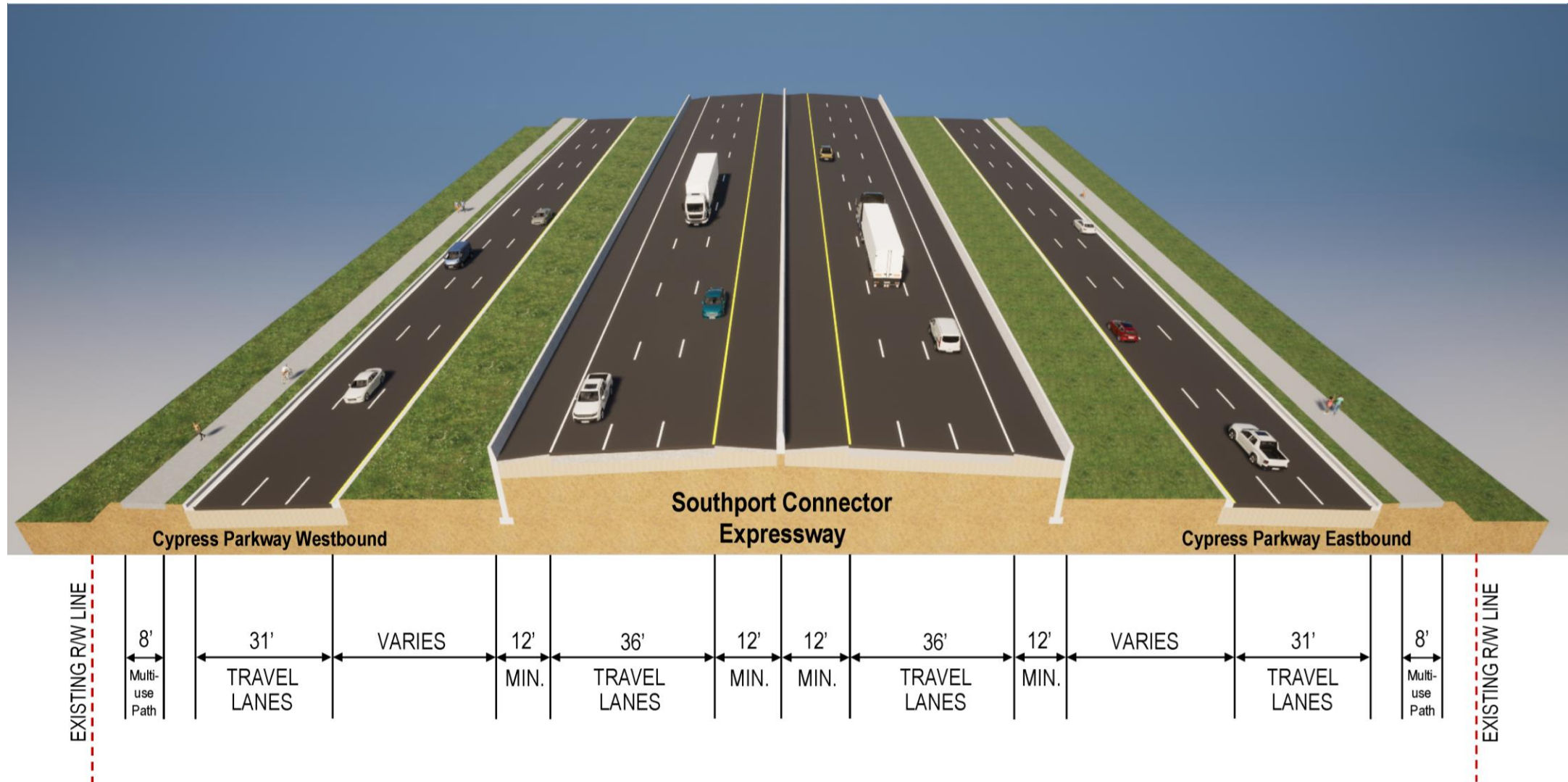
- Southport Connector PD&E Study Area
- FTE Systems Interim Interchange
- Proposed Alternatives**
- Common Roadway to All Alternatives
- CFX Alternative 3000
- CFX Alternative 4000
- CFX Alternative 7000
- CFX Cypress Parkway Segment
- Realignment of Southport Road

Source: Esri, Maxar, Earthstar Geographics, and the GIS User Community

Typical Section: Cypress Parkway – Bridge Alternative



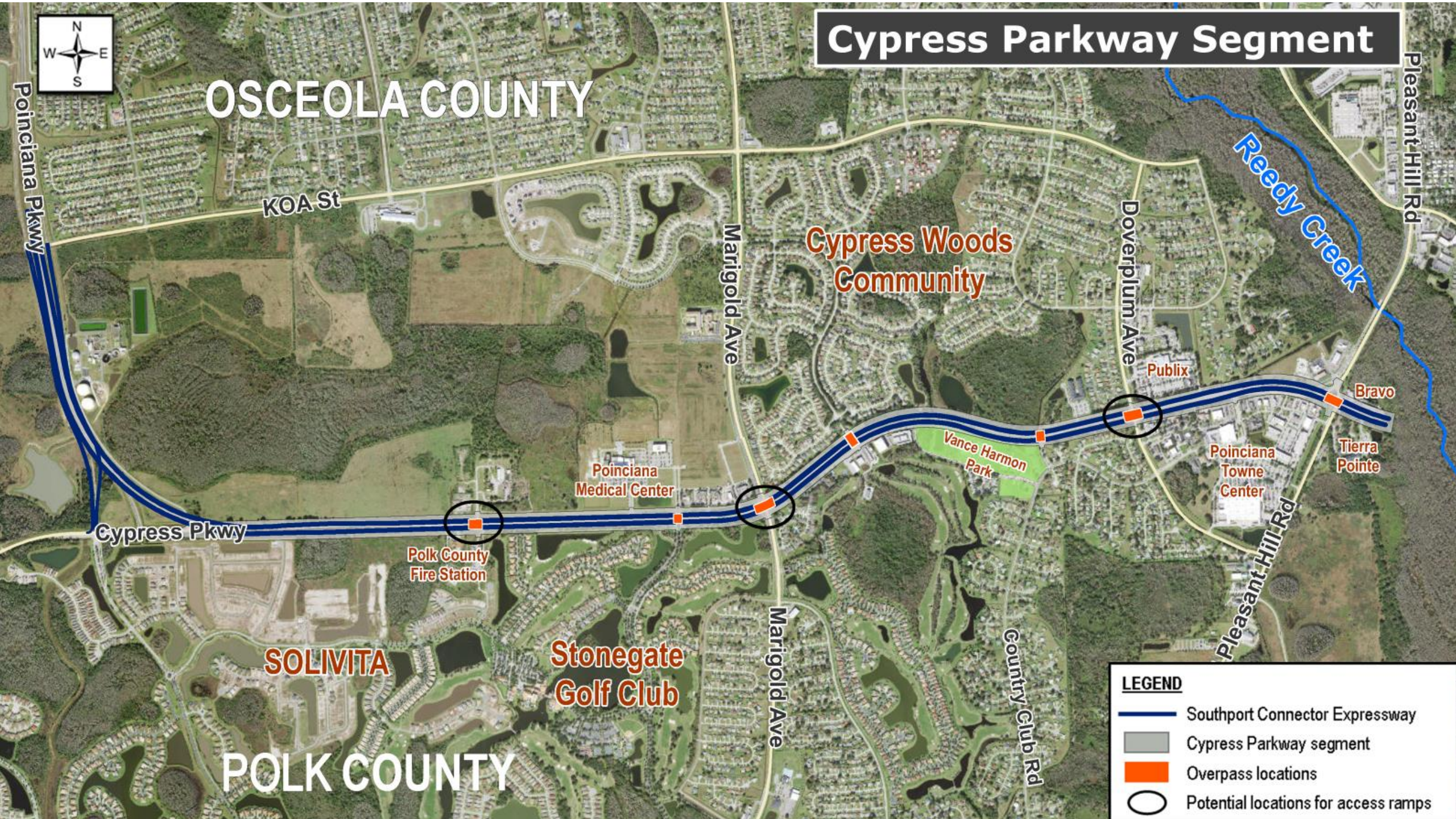
Typical Section: Cypress Parkway - Wall Alternative



Cypress Parkway Segment

OSCEOLA COUNTY

POLK COUNTY



LEGEND

- Southport Connector Expressway
- Cypress Parkway segment
- Overpass locations
- Potential locations for access ramps

Poinciana Parkway / Solivita West Looking East



September 2024

Solivita East (South Side) Looking West – Bridge Structure Alternative



Solivita East (South Side) Looking West – Wall Alternative



September 2024

Solivita East (South Side) Looking West



Bridge Structure Alternative



Wall Alternative

Solivita East North Side Looking West – Bridge Structure Alternative



September 2024

Solivita East (North Side) Looking West
– Wall Alternative



September 2024

Solivita East (North Side) Looking West



Bridge Structure Alternative



Wall Alternative

Marigold Ave (South Side) Looking West – Bridge Structure Alternative



September 2024

Marigold Ave (South Side) Looking West – Wall Alternative



September 2024

Marigold Ave (South Side) Looking West



Bridge Structure Alternative



Wall Alternative

Cypress Branch Rd Looking West – Bridge Structure Alternative



Cypress Branch Rd Looking West - Wall Alternative



September 2024

Cypress Branch Rd Looking West



Bridge Structure Alternative



Wall Alternative

Doverplum Ave (North Side) Looking East – Bridge Structure Alternative



Doverplum Ave (North Side) Looking East
– Wall Alternative



Doverplum Ave (North Side) Looking East



Bridge Structure Alternative



Wall Alternative

Pleasant Hill Rd Aerial View — Wall Alternative



September 2024

Pleasant Hill Rd Aerial View – Bridge Structure Alternative



September 2024

Pleasant Hill Rd Looking Southwest – Bridge Structure Alternative



September 2024

Pleasant Hill Rd Looking Northwest – Bridge Structure Alternative



September 2024

An aerial photograph of a busy intersection in Poinciana, Florida. The image shows multiple lanes of traffic with cars and trucks. A large graphic overlay in the center reads "MOVE" in white, bold, sans-serif font, with an orange arrow pointing to the right. Below "MOVE", the word "POINCIANA" is written in a smaller, orange, spaced-out font. The background includes a Wawa gas station with a red roof and a price sign showing 95¢, 57¢, and 42¢. There are also various commercial buildings and green spaces visible.

MOVE

POINCIANA

What would this mean for the community?

Community Investment – Social Benefits



Reliable Travel Times: Getting to work, school & medical appointments *on time*



Enhanced Safety: Less roadway gridlock would mean fewer collisions

- Fewer collisions also mean reduced medical, repair and other related costs



Emergency Response Times: Free-flowing traffic means help arrives sooner

- Enhanced evacuation times



Less stop-and-go traffic:

- Will help reduce carbon dioxide (CO2) emissions
- Means lower fuel costs
- Means more time spent doing the things we want and need to do!



Easier travel means less stress for all of us!

Community Investment – Economic Benefits

Employers



- Would see reduced productivity losses from late employees or delayed deliveries due to traffic tie-ups
- Will have less difficulty recruiting staff if folks know they'll have an easier commute



Local Citizens

- Expressway construction would provide jobs



Local Businesses

- Construction companies will require goods and services
- Project staff will patronize local businesses
 - Funneling money back into the local economy

PUBLIC ENGAGEMENT SCHEDULE HIGHLIGHTS

	2024		2025				2026
	Q3	Q4	Q1	Q2	Q3	Q4	Q1
Community Outreach	[Dark blue bar spanning all quarters from Q3 2024 to Q1 2026]						
Informal Community Open House		★					
Advisory Group Meetings			[Dark blue bar spanning Q1 and Q2 2025]		[Dark blue bar spanning Q3 and Q4 2025]		
Alternatives Public Meeting			[Dark blue bar spanning Q1, Q2, and Q3 2025]				
Public Hearing (Recommended Alternative)					★		
CFX Governing Board Meeting Review						★	

**Subject to change*

Public Involvement Opportunities

We want to hear from you! Here's how to be part of the Southport Connector Expressway PD&E Study:



Visit MovePoinciana.com to:

- Take the Survey
- Schedule a Community or Civic Group Presentation
- View study visuals in the Virtual Resource Space (Coming Soon)
- Find out about public meetings and other engagement opportunities



Send us your Questions, Comments and Ideas

Email us at: ProjectStudies@CFXway.com

Connect with Us!

CFX wants all members of the community to get engaged in evaluating travel solutions for Poinciana.

To ensure inclusivity and project understanding, CFX is providing many study resources and materials in English and Spanish:

- Website
- Survey
- Fact Sheet
- Flyer

CONÉCTATE CON NOSOTROS

 **VISITA NUESTRA PÁGINA WEB**
www.AvanzaPoinciana.com

 **SIGUE NUESTRAS REDES SOCIALES**
[@CFXway](https://www.instagram.com/CFXway)

 **REALIZA LA ENCUESTA DE TRÁFICO**

 **HOJA INFORMATIVA**

CENTRAL FLORIDA EXPRESSWAY AUTHORITY

AVANZA POINCIANA



**CENTRAL
FLORIDA
EXPRESSWAY
AUTHORITY**

**THANK YOU!
QUESTIONS?**