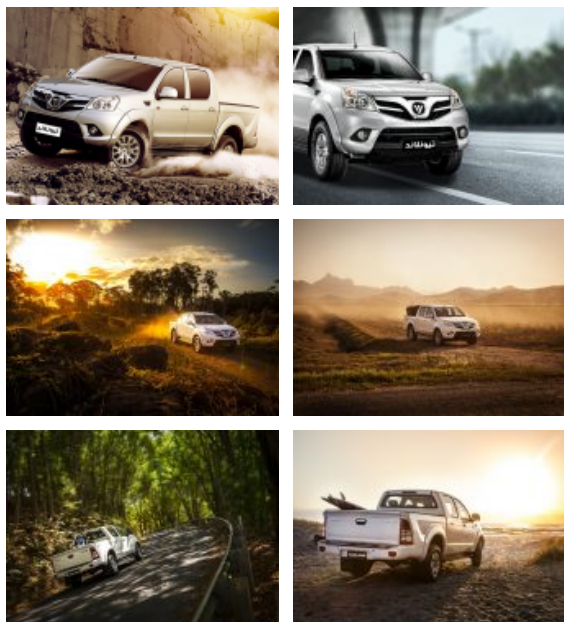


Foton
6677
IRAQ-BAGHDAD-ALJADIRIYA-NEAR CORAL HOTEL

TUNLAND

Drive Beyond Borders



Year:	2017
Make:	Foton
Model:	Tunland
Body Style:	Dual Cab
Transmission:	5-Speed Manual
Wheel Drive:	2WD
Engine:	2.4 L Gasoline
Interior Color:	Fabric/Gray

Vehicle Overview

The Tunland is Foton's signature next-generation pickup truck. The vehicle features the latest technology and is extremely reliable. Thanks to its special design, the Tunland offers you an impressive visibility and an extraordinary driving experience. Displaying perfection in every detail, the Tunland truly is in a class of its own. For both work and leisure, the Tunland is the perfect choice for the discerning driver.

Features and Options

ABS, Airbags, Air Conditioning, Alarm System, Anti-theft Protection, Central door lock, EBD, Front fog lamps, Manual Transmission - 5 speed, Parking sensors, Power Steering, Rear fog lamps

Technical Specifications

9// 'D#37H'F'* 4.
BE'1) +F'&J).
'D-EHD) F5A 7F.
'D#(9'/ (EE) 'D7HD : 5310 - 'D916 : 1800 - 'D#1*A'9 : 1745.
'D#7'1'* HJD C(15.
FH'A0 CG1('&J).
ECJA GH'!.
E1'J' , 'F(J) CG1('&J).
'DF8'E 'D3E9J (CD - MP3 - AUX - USB)