



# Pediatric COVID-19 Vaccine Dosing Quick Reference Guide

## Moderna, Pfizer-BioNTech, and Novavax COVID-19 Vaccine Products

### Moderna COVID-19 Vaccine Products 2024–2025 Formula

Green label

Blue label

0.25 ml single-dose prefilled syringe




0.5 ml single-dose prefilled syringe

### Pfizer-BioNTech COVID-19 Vaccine Products 2024–2025 Formula

Yellow cap

Blue cap

Gray label


3 mcg/0.3 ml (dilute before use) three-dose vial

10 mcg/0.3 ml single-dose vial

0.3 ml single-dose prefilled syringe

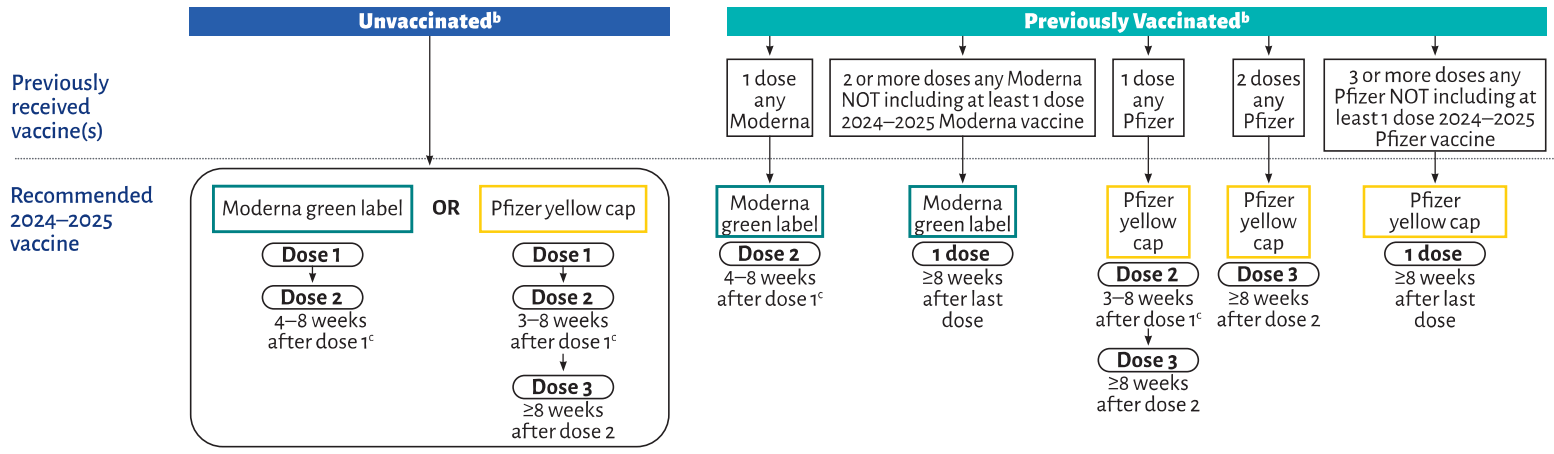
### Novavax COVID-19 Vaccine Product 2024–2025 Formula

Dark cyan label

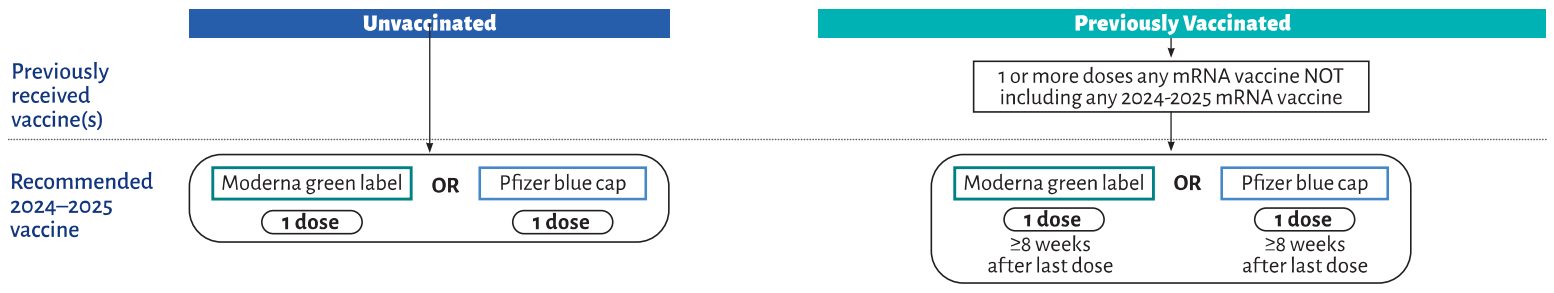


0.5 ml single-dose prefilled syringe

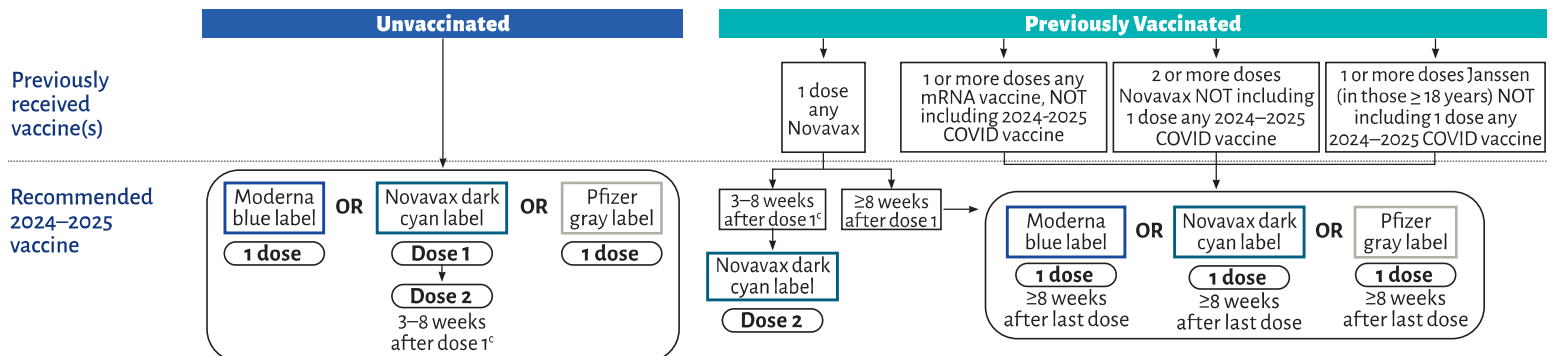
### 6 months – 4 years<sup>a</sup>



### 5<sup>a</sup> – 11 years



### 12 years and older



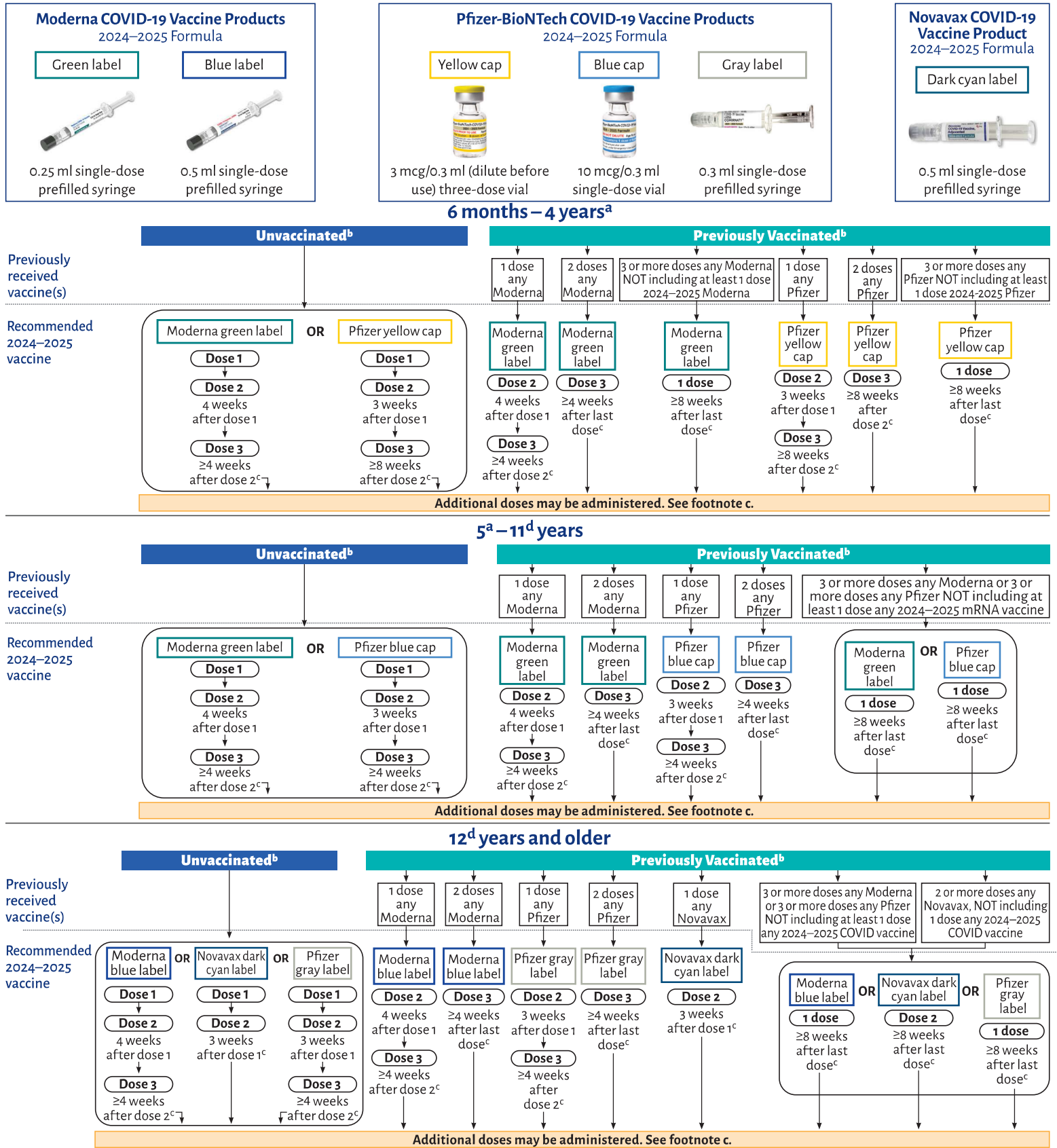
**a.** For children who turn 4 to 5 years during their vaccine series, follow dosing recommendations based on age on the day of vaccination. For Pfizer vaccine, if the 10 mcg dose is the second dose, administer 3–8 weeks after the first dose; if it is the third dose, administer at least 8 weeks after the second dose. If more than 8 weeks have elapsed since receipt of the last dose of mRNA COVID-19 vaccine at the dosage for children ages 6 months–4 years, either 2024–2025 mRNA COVID-19 vaccine may be administered at the dosage for children ages 5–11 years.

**b.** For patients who are 6 months–4 years of age, COVID-19 vaccine doses from the same manufacturer should be administered whenever recommended. In the following circumstances, an age-appropriate COVID-19 vaccine from a different manufacturer may be administered: (1) Same vaccine not available at the vaccination site at the time of the clinic visit, (2) Previous dose unknown, (3) Person would otherwise not receive a recommended vaccine dose, (4) Person starts but unable to complete a vaccination series with the same COVID-19 vaccine due to a contraindication. A Vaccine Adverse Event Reporting System (VAERS) report is not indicated in these circumstances.

**c.** An 8-week interval between the first and second COVID-19 vaccine (Moderna, Novavax, and Pfizer) doses might be optimal for some people as it might reduce the rare risk of myocarditis and pericarditis associated with these vaccines.

# Pediatric COVID-19 Vaccine Dosing Quick Reference Guide

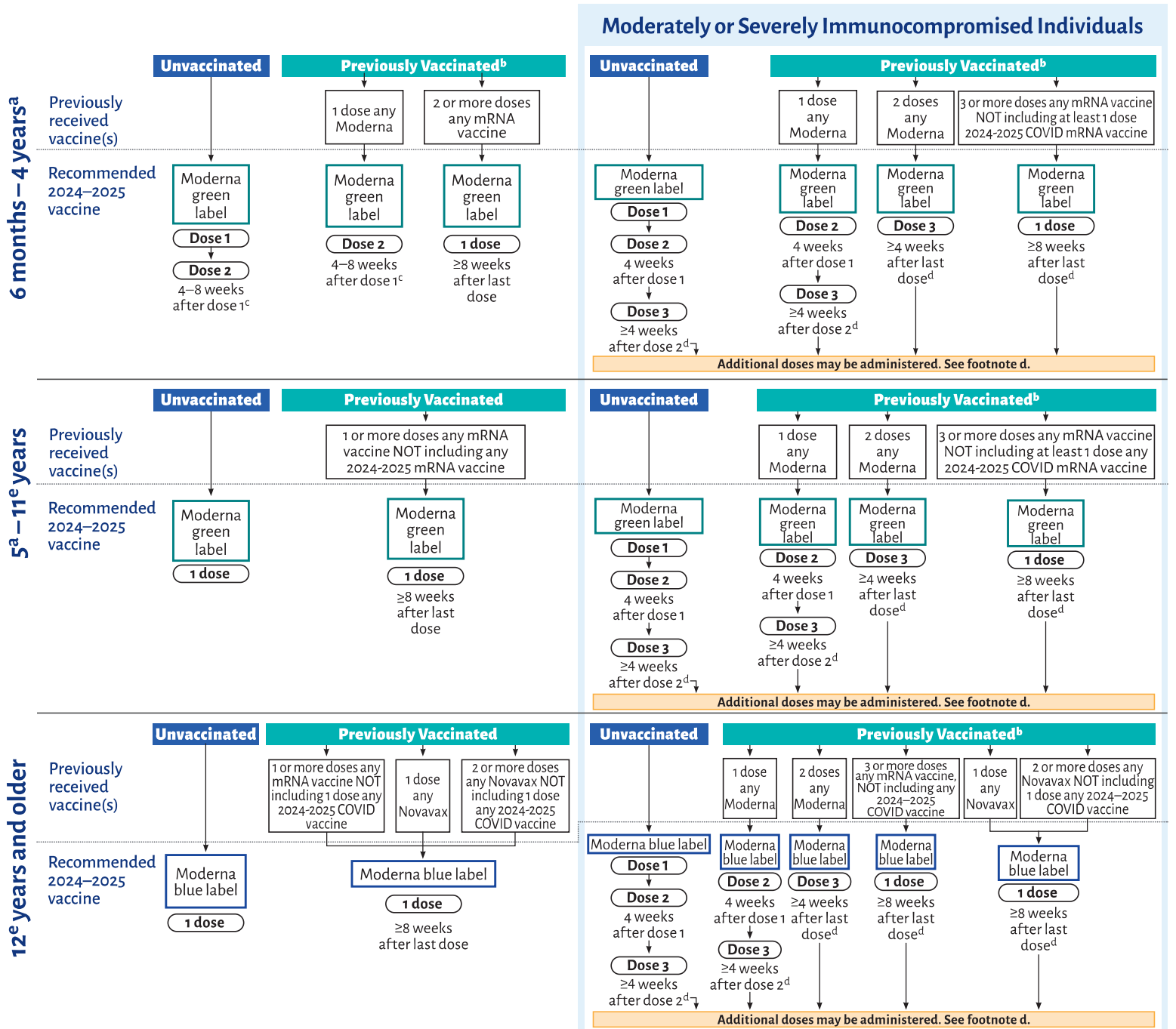
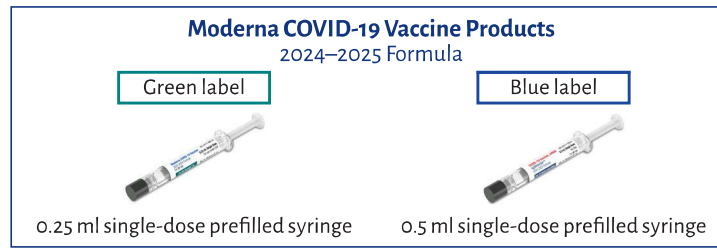
## Moderna, Pfizer-BioNTech, and Novavax COVID-19 Vaccine Products for Individuals who are Moderately or Severely Immunocompromised



**a.** For children who turn 4 to 5 years during their vaccine series, follow dosing recommendations based on age on the day of vaccination.  
**b.** COVID-19 vaccine doses from the same manufacturer should be administered whenever recommended. In the following circumstances, an age-appropriate COVID-19 vaccine from a different manufacturer may be administered: (1) Same vaccine not available at the vaccination site at the time of the clinic visit, (2) Previous dose unknown, (3) Person would otherwise not receive a recommended vaccine dose, (4) Person starts but unable to complete a vaccination series with the same COVID-19 vaccine due to a contraindication. A Vaccine Adverse Event Reporting System (VAERS) report is not indicated in these circumstances.  
**c.** Individuals who are moderately or severely immunocompromised may receive one additional age-appropriate dose of 2024–2025 COVID vaccine 2 months following the last recommended 2024–2025 dose. Further additional doses may be administered at ≥2 month intervals, informed by the clinical judgment of a healthcare provider and personal preference and circumstances. Children 6 months–4 years of age are recommended to receive vaccine from the same manufacturer for all additional doses. Individuals 5 years and older may receive any age-appropriate 2024–2025 COVID vaccine for all additional doses, regardless of manufacturer for the initial series.  
**d.** For children who turn 11 to 12 years during their vaccine series, follow dosing recommendations based on age at the time of vaccination.

# Pediatric COVID-19 Vaccine Dosing Quick Reference Guide

## For Practices that Administer Moderna COVID-19 Vaccine Products Only



**a.** For children who turn 4 to 5 years during their vaccine series, follow dosing recommendations based on age on the day of vaccination. For Pfizer vaccine, if the 10 mcg dose is the second dose, administer 3–8 weeks after the first dose; if it is the third dose, administer at least 8 weeks after the second dose. If more than 8 weeks have elapsed since receipt of the last dose of mRNA COVID-19 vaccine at the dosage for children ages 6 months–4 years, either 2024–2025 mRNA COVID-19 vaccine may be administered at the dosage for children ages 5–11 years.

**b.** COVID-19 vaccine doses from the same manufacturer should be administered whenever recommended. In the following circumstances, an age-appropriate COVID-19 vaccine from a different manufacturer may be administered: (1) Same vaccine not available at the vaccination site at the time of the clinic visit, (2) Previous dose unknown, (3) Person would otherwise not receive a recommended vaccine dose, (4) Person starts but unable to complete a vaccination series with the same COVID-19 vaccine due to a contraindication. A Vaccine Adverse Event Reporting System (VAERS) report is not indicated in these circumstances.

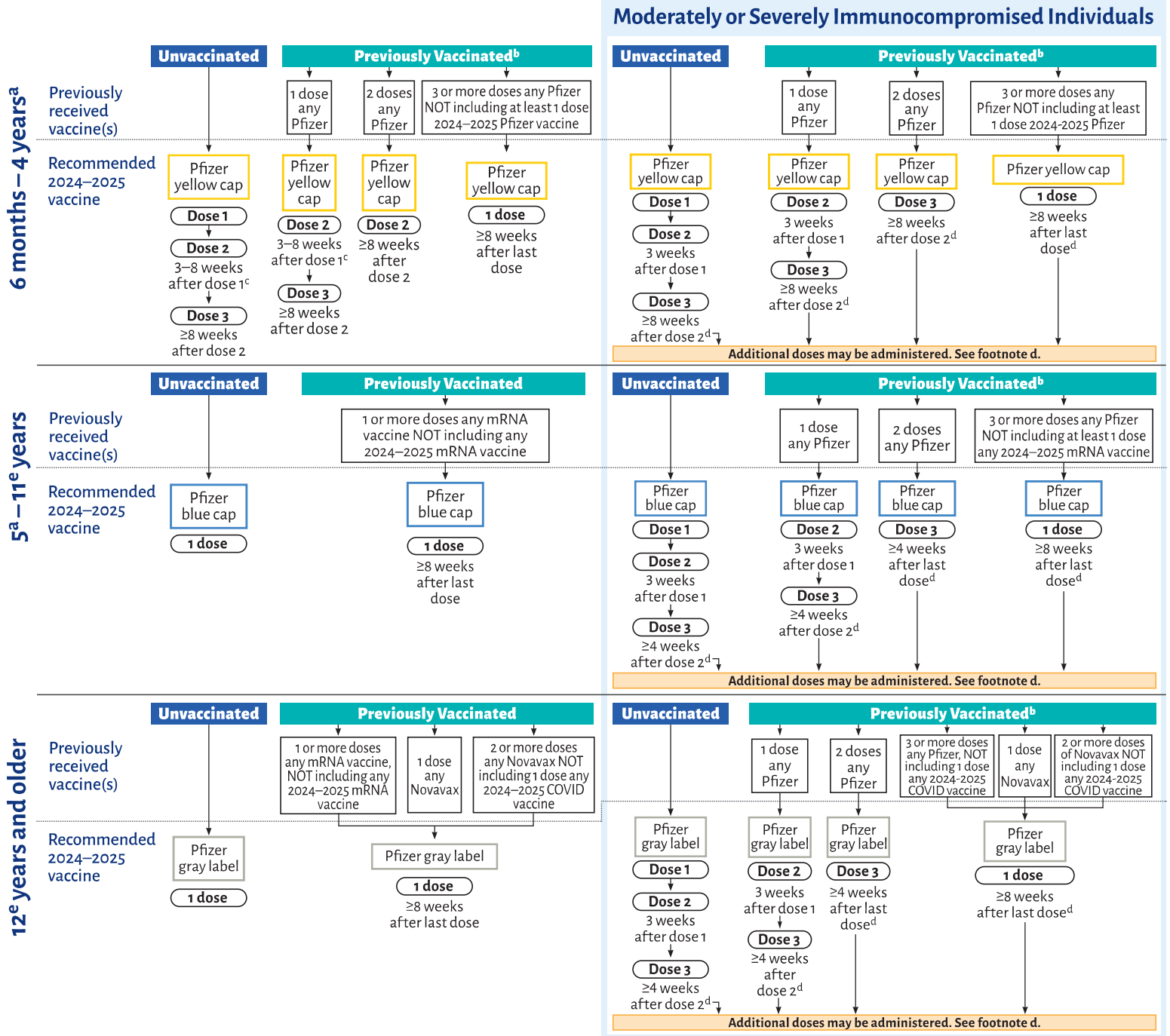
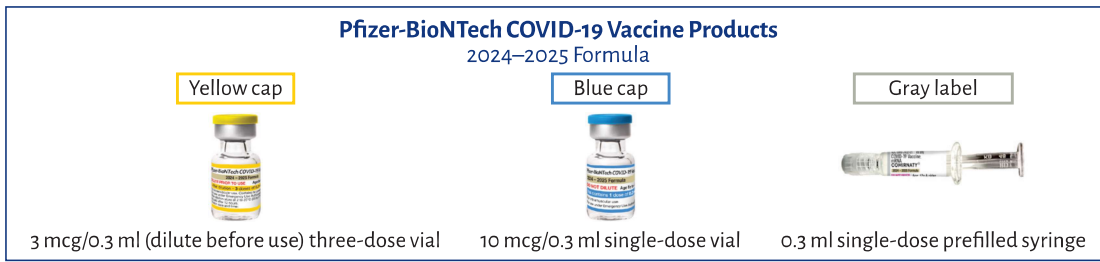
**c.** An 8-week interval between the first and second COVID-19 vaccine (Moderna, Novavax, and Pfizer) doses might be optimal for some people as it might reduce the rare risk of myocarditis and pericarditis associated with these vaccines

**d.** Individuals who are moderately or severely immunocompromised may receive one additional age-appropriate dose of 2024–2025 COVID vaccine 2 months following the last recommended 2024–2025 dose. Further additional doses may be administered at ≥2 month intervals, informed by the clinical judgment of a healthcare provider and personal preference and circumstances. Children 6 months–4 years of age are recommended to receive vaccine from the same manufacturer for all additional doses. Individuals 5 years and older may receive any age-appropriate 2024–2025 COVID vaccine for all additional doses, regardless of manufacturer for the initial series.

**e.** For children who turn 11 to 12 years during their vaccine series, follow dosing recommendations based on age at the time of vaccination.

# Pediatric COVID-19 Vaccine Dosing Quick Reference Guide

## For Practices that Administer Pfizer-BioNTech COVID-19 Vaccine Products Only



**a.** For children who turn 4 to 5 years during their vaccine series, follow dosing recommendations based on age on the day of vaccination. For Pfizer vaccine, if the 10 mcg dose is the second dose, administer 3-8 weeks after the first dose; if it is the third dose, administer at least 8 weeks after the second dose. If more than 8 weeks have elapsed since receipt of the last dose of mRNA COVID-19 vaccine at the dosage for children ages 6 months-4 years, either 2024-2025 mRNA COVID-19 vaccine may be administered at the dosage for children ages 5-11 years.

**b.** COVID-19 vaccine doses from the same manufacturer should be administered whenever recommended. In the following circumstances, an age-appropriate COVID-19 vaccine from a different manufacturer may be administered: (1) Same vaccine not available at the vaccination site at the time of the clinic visit, (2) Previous dose unknown, (3) Person would otherwise not receive a recommended vaccine dose, (4) Person starts but unable to complete a vaccination series with the same COVID-19 vaccine due to a contraindication. A Vaccine Adverse Event Reporting System (VAERS) report is not indicated in these circumstances.

View online at [aap.org/CovidVaccineGuide](http://aap.org/CovidVaccineGuide)

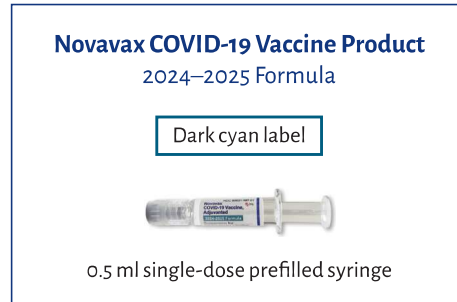
**c.** An 8-week interval between the first and second COVID-19 vaccine (Moderna, Novavax, and Pfizer) doses might be optimal for some people as it might reduce the rare risk of myocarditis and pericarditis associated with these vaccines.

**d.** Individuals who are moderately or severely immunocompromised may receive one additional age-appropriate dose of 2024-2025 COVID vaccine 2 months following the last recommended 2024-2025 dose. Further additional doses may be administered at ≥2 month intervals, informed by the clinical judgment of a healthcare provider and personal preference and circumstances. Children 6 months-4 years of age are recommended to receive vaccine from the same manufacturer for all additional doses. Individuals 5 years and older may receive any age-appropriate 2024-2025 COVID vaccine for all additional doses, regardless of manufacturer for the initial series.

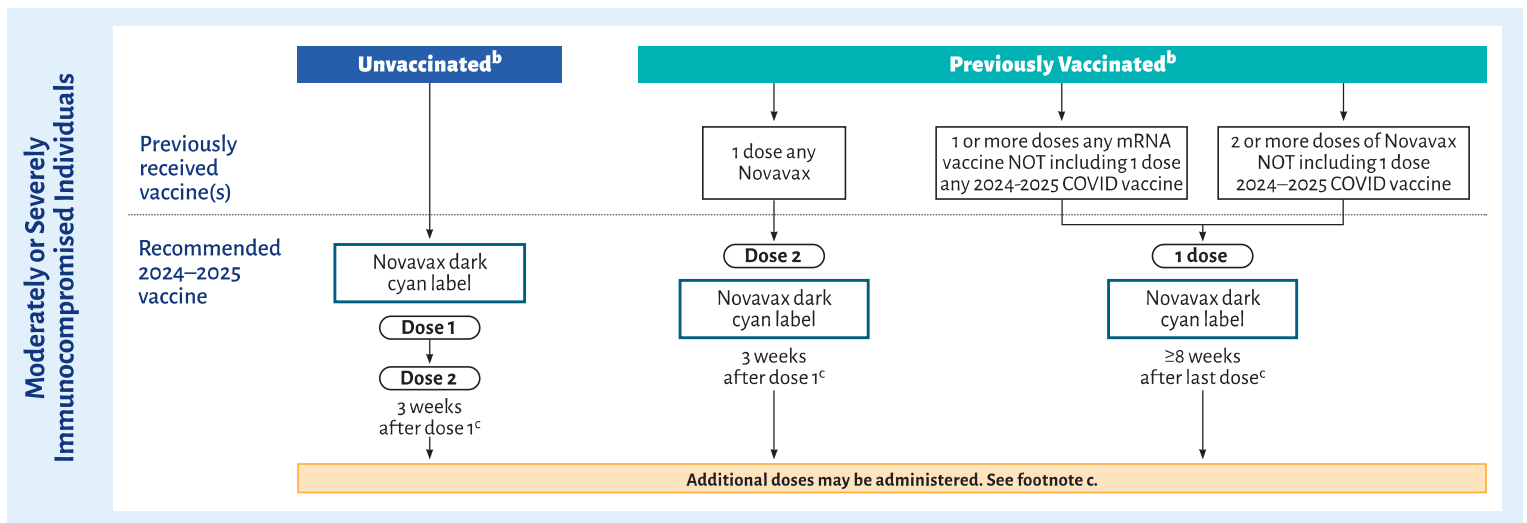
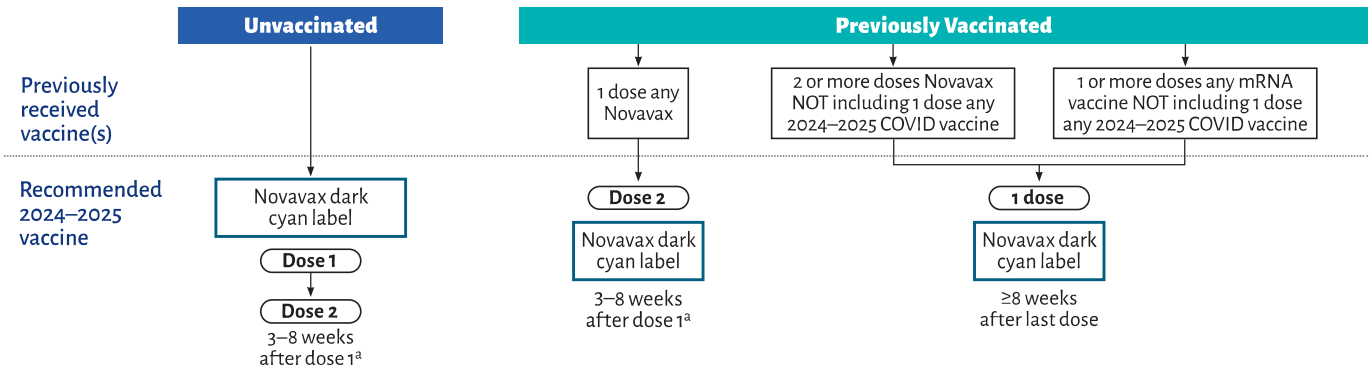
**e.** For children who turn 11 to 12 years during their vaccine series, follow dosing recommendations based on age at the time of vaccination.

# Pediatric COVID-19 Vaccine Dosing Quick Reference Guide

## For Practices that Administer Novavax COVID-19 Vaccine Only



### 12 years and older



**a.** An 8-week interval between the first and second COVID-19 vaccine (Moderna, Novavax, and Pfizer) doses might be optimal for some people as it might reduce the rare risk of myocarditis and pericarditis associated with these vaccines.  
**b.** COVID-19 vaccine doses from the same manufacturer should be administered whenever recommended. In the following circumstances, an age-appropriate COVID-19 vaccine from a different manufacturer may be administered: (1) Same vaccine not available at the vaccination site at the time of the clinic visit, (2) Previous dose unknown, (3) Person would otherwise not receive a recommended vaccine dose, (4) Person starts but unable to complete a vaccination series with the same COVID-19 vaccine due to a contraindication. A Vaccine Adverse Event Reporting System (VAERS) report is not indicated in these circumstances.  
**c.** Individuals who are moderately or severely immunocompromised may receive one additional age-appropriate dose of 2024–2025 COVID vaccine 2 months following the last recommended 2024–2025 dose. Further additional doses may be administered at ≥2 month intervals, informed by the clinical judgment of a healthcare provider and personal preference and circumstances. Children 6 months–4 years of age are recommended to receive vaccine from the same manufacturer for all additional doses. Individuals 5 years and older may receive any age-appropriate 2024–2025 COVID vaccine for all additional doses, regardless of manufacturer for the initial series.