



Industrial Condos: 2,905 - 15,930 SF

- A** 195 Lewis Road, Unit 36, 37, 38
San Jose, CA 95111 7,815 SF
- B** 185 Lewis Road, Unit 33, 34
San Jose, CA 95111 5,210 SF
- C** 185 Lewis Road, Unit 35
San Jose, CA 95111 2,905 SF

For further information contact

Jim Randleman

jim@jr-commercial.com

Cell: +408-314-8888

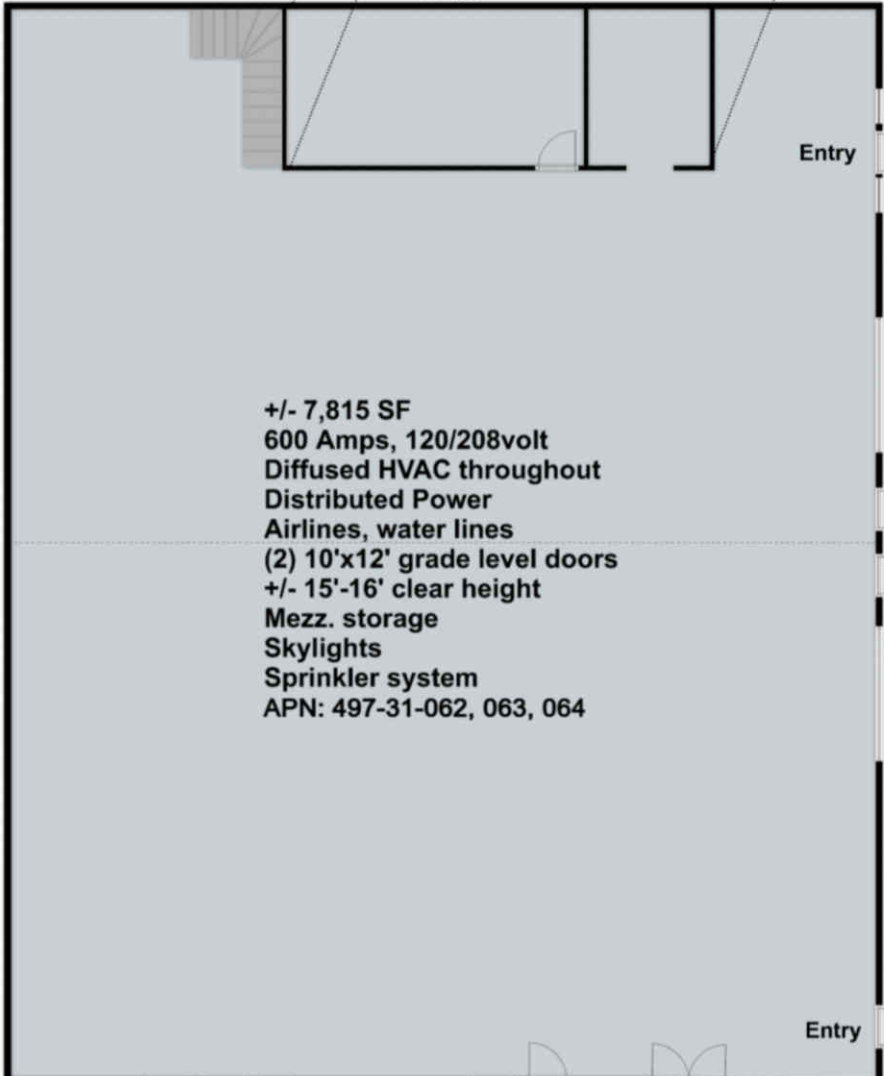
Office: +408-549-1780

JR Commercial Real Estate

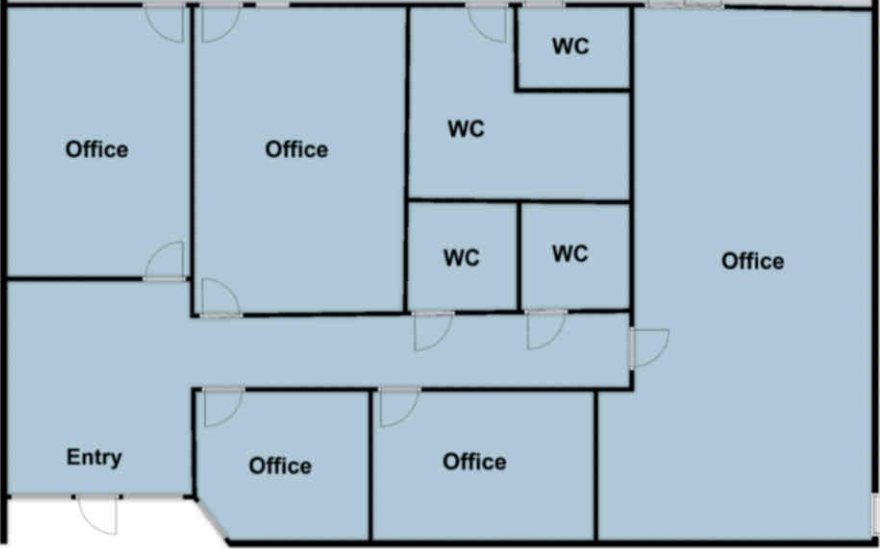
Information contained herein is for marketing purposes only. It has been obtained from the owners or from other sources we deem reliable. We have no reason to doubt its accuracy but, we cannot guarantee it, and could be mistakenly inaccurate. Prior to any lease or purchase the lessee or Buyer should verify all information on this brochure. All properties subject to change or withdrawal without notice.

Mezz.
(bonus space)

+/- 65'

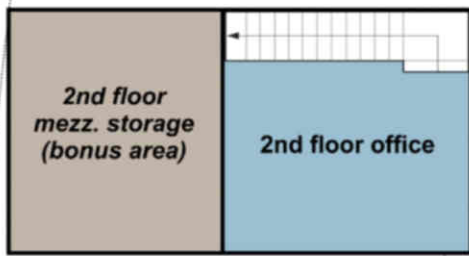


195 Lewis Road,
Units 36, 37, 38



#36

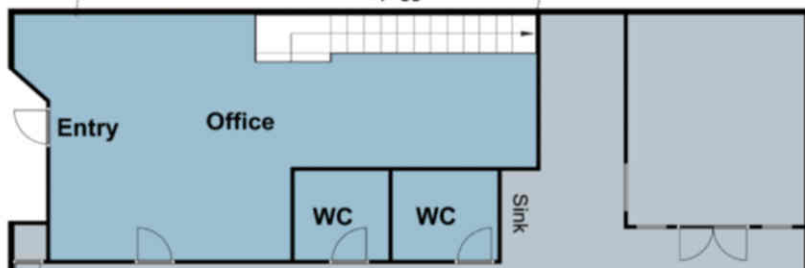
Not To Scale



+/- 65'

C

185 Lewis Road,
Unit 35



+/- 40'

GL

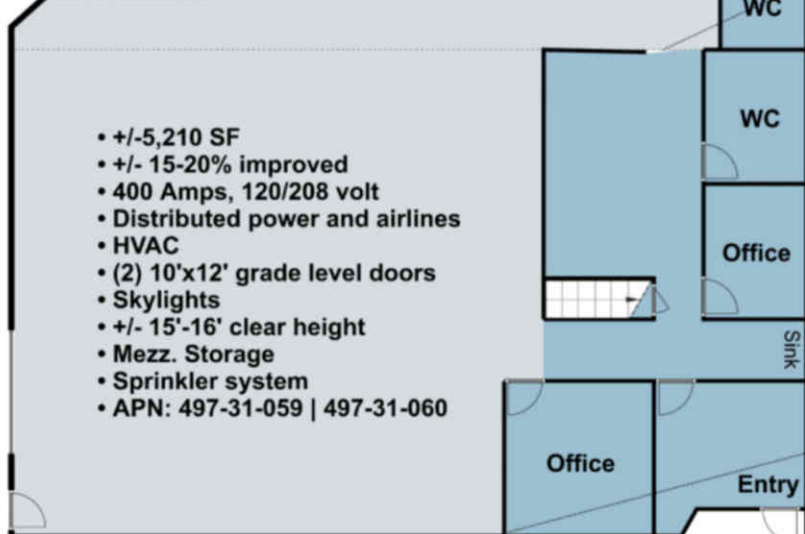
- +/- 2905 SF
- +/-30% improved
- 200 Amps, 120/208 volt
- Distributed power and airlines
- Skylights
- +/- 15'-16' clear height

- HVAC
- 10'x12' grade level door
- Mezz. Storage
- Sprinkler system
- APN: 497-31-061

GL

B

185 Lewis Road,
Unit 33, 34



+/- 80'

GL

- +/-5,210 SF
- +/- 15-20% improved
- 400 Amps, 120/208 volt
- Distributed power and airlines
- HVAC
- (2) 10'x12' grade level doors
- Skylights
- +/- 15'-16' clear height
- Mezz. Storage
- Sprinkler system
- APN: 497-31-059 | 497-31-060



Not To Scale

