



Industrial Condos: 2,905 - 15,930 SF

A 195 Lewis Road, Unit 36, 37, 38
San Jose, CA 95111 7,815 SF

B **In Escrow** 185 Lewis Road, Unit 33, 34
San Jose, CA 95111 5,210 SF

C **In Escrow** 185 Lewis Road, Unit 35
San Jose, CA 95111 2,905 SF

For further information contact

Jim Randleman

jim@jr-commercial.com

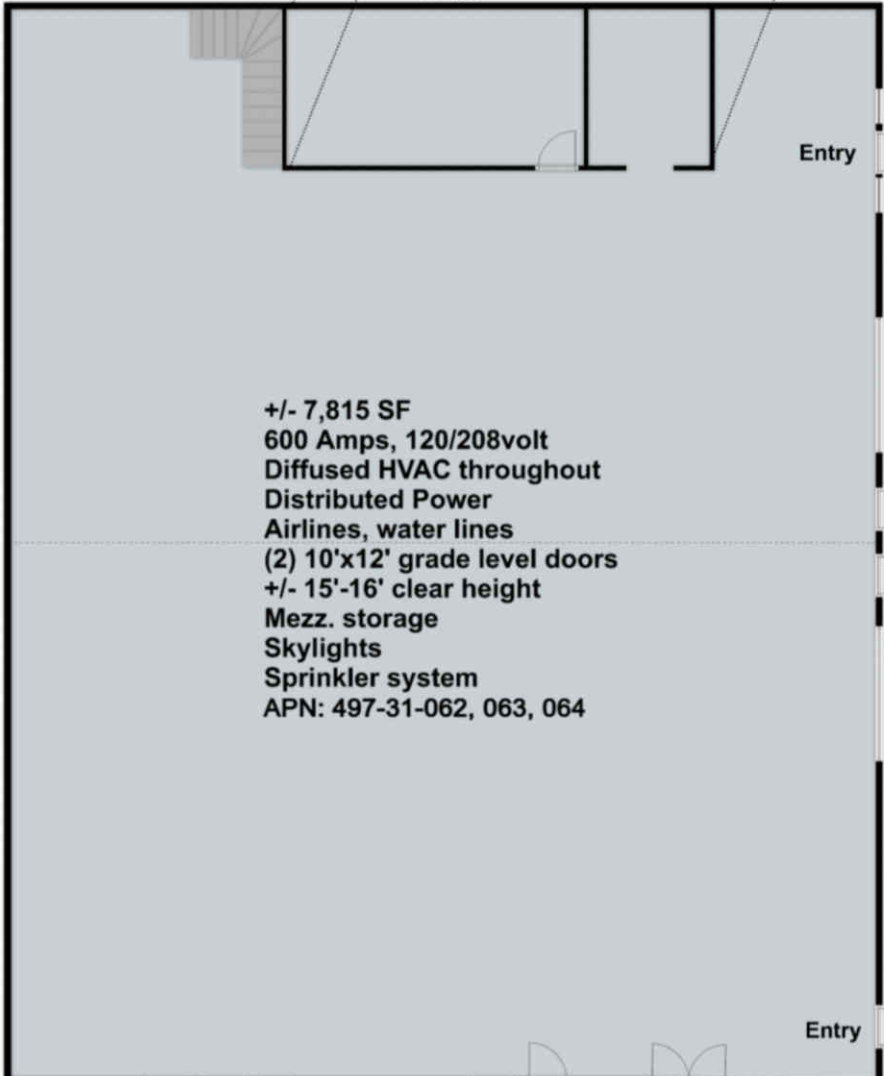
Cell: +408-314-8888

Office: +408-549-1780

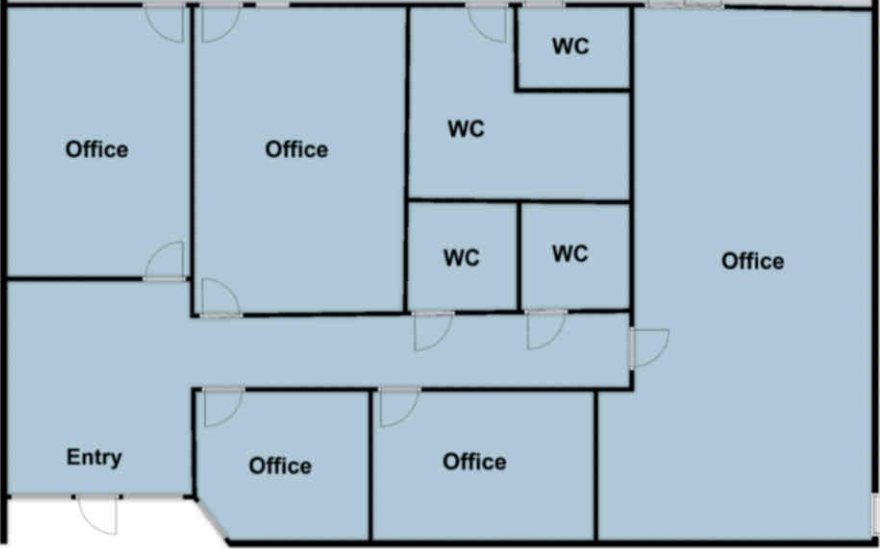
BRE # 00860359

Mezz.
(bonus space)

+/- 65'

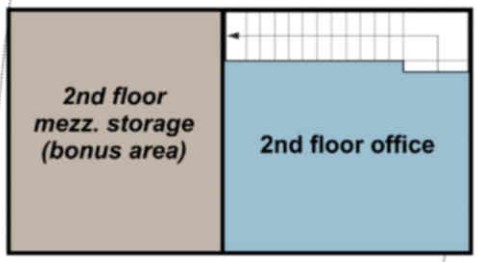


195 Lewis Road,
Units 36, 37, 38



#36

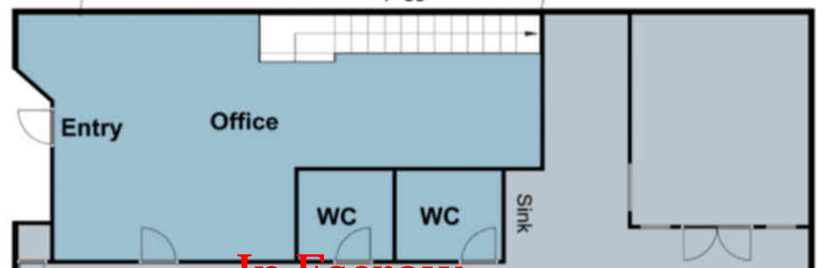
Not To Scale



+/- 65'

C

185 Lewis Road,
Unit 35



In Escrow

GL

- +/- 2905 SF
- +/-30% improved
- 200 Amps, 120/208 volt
- Distributed power and airlines
- Skylights
- +/- 15'-16' clear height

- HVAC
- 10'x12' grade level door
- Mezz. Storage
- Sprinkler system
- APN: 497-31-061

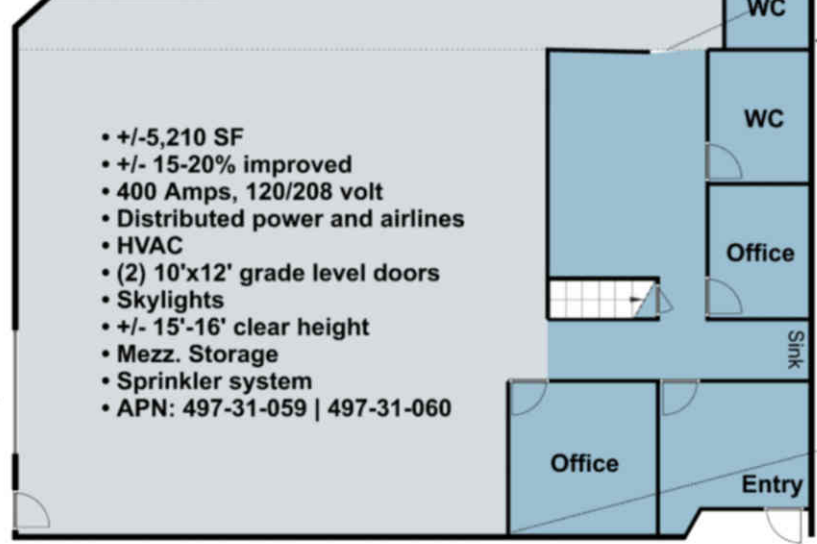
+/- 40'

GL

In Escrow

B

185 Lewis Road,
Unit 33, 34



GL

- +/-5,210 SF
- +/- 15-20% improved
- 400 Amps, 120/208 volt
- Distributed power and airlines
- HVAC
- (2) 10'x12' grade level doors
- Skylights
- +/- 15'-16' clear height
- Mezz. Storage
- Sprinkler system
- APN: 497-31-059 | 497-31-060

+/- 80'



Not To Scale

