

# SIGHT WIDE



# Table of Content

Who We Are	03
The Problems We Solve	04
What SightWide Means for You	05
Why Choose Us	08
Contact	09



# Who We Are

At SightWide, we specialize in creating highly accurate 3D models of construction sites. Through drone scanning and photogrammetry, we produce digital twins accurate to within 5 centimeters, a level of detail that goes far beyond conventional documentation, for your day-to-day use, without compromising quality of documentation with outdated sources.



# The Problem You Face

Context and perspective is everything when assessing what happens at your construction site. Where progress is often tracked with photos, spreadsheets, and reports, these methods are fragmented and can be open to interpretation. Our 3D models unify data and context, to deliver the optimal visual of your site to understand site layout, progress and associated analytics.

## **\$1.8T Lost in Productivity**

2023 McKinsey report, poor project data and miscommunication

## **Losing +14 Hours/Week**

Autodesk - 35% of construction professionals spend +14 hours/week on non-productive activities, including searching for project data or redoing inaccurate work

## **30% Claims are due to Disagreements**

Dodge Data & Analytics - Regarding claims stemming from disagreements about site conditions or completed work

## **5-11% Cost of Deviations from Design**

Autodesk/FMI - Deviation from design is a leading driver of rework

# What SightWide Means for You

## Indisputable Visual Proof of Progress

Traditional progress photos, videos and written reports often leave room for interpretation and disputes. 30% of project claims arise from disagreements about completed work or site conditions (*Dodge Construction Network*). By producing timestamped 3D models, SightWide delivers a verifiable “single source of truth” that removes ambiguity and protects all stakeholders.



## 50% Fewer Disputes with Stakeholders

*Arcadis disputes study trends + Autodesk case studies*



## Precise Digital Volume and Material Condition

Manual field measurements of excavation, concrete placement, or stockpiles are time-consuming and prone to human error. A 2023 Autodesk survey found that 35% of construction professionals spend over 14 hours a week on rework or data hunting. With SightWide, managers can extract accurate material quantities directly from the digital twin, reducing costly mistakes and freeing up valuable time.

## Reduction in Quantity Calculation Errors



# Remote Safety and Quality Inspections

Physical inspections require time, travel, and access to potentially hazardous areas. PwC estimates that project managers spend up to 20% of their time on site travel alone. With SightWide's navigable 3D models, teams can remotely review site conditions, identify risks, and verify quality without always needing to step foot on site, cutting costs while enhancing safety.



## Cutting Travel Cost and Freeing Time



# Stakeholder Reporting with True Visual Context

Reports often rely on static charts or vague summaries. SightWide bridges the communication gap between workers, managers and clients by providing each stakeholders with clear, visual context that pairs quantitative progress with indisputable imagery, improving trust and decision-making.

## 40% Less Time Analyzing Data Means Faster Decision-Making

*ScienceDirect - Empirical study on the effect of 3D visualization for project tasks.*

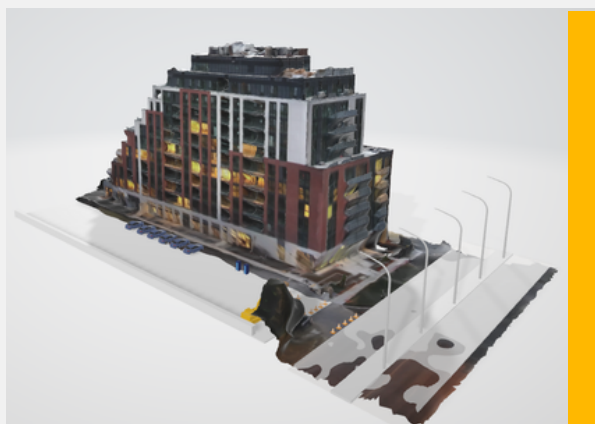
# Safety Orientations and Incident Reviews

New workers or subcontractors often struggle to understand site-specific hazards through text-based orientations. Research shows that 65% of people are visual learners, meaning they retain information better through visual context. SightWide models allow teams to conduct virtual walkthroughs for orientations, and to replay site conditions for incident reviews, improving both prevention and accountability.



**“...significantly more effective in improving learning outcomes (knowledge, hazard recognition, retention)...”**

*ScienceDirect - VR effectiveness in construction safety training.*



## Support Direct Comparison of As-Built vs. Design Models

Deviation from design is a leading driver of rework, which adds an estimated 5–11% to total project costs (Autodesk/FMI). By overlaying design models with as-built digital twins, SightWide enables precise comparisons, highlighting discrepancies early before they become costly errors.

**40-50% Reduction in Rework Cost with Overlaying As-Built with Design**

*Springer Nature - Impact of BIM and As-Built Comparisons*

# Why Choose Us

Conventional 3D Scanning	With SightWide	What It Means For You
LIDAR Scanning can take from a half to full <b>uninterrupted day</b> of site access	We take <b>half to full hour</b> of site access only.	Minimal Disruption to Ongoing Work  Allowing scans to be performed outside of working hours (Prior to shift start, after shift end, during shift handover, and on non-calendar days)
3D scanning services can range anywhere between \$2,000 to \$5,000+ <b>PER SCAN</b>	SightWide <b>provides reoccurring service at a fraction of the cost</b> by employing photogrammetry on scans performed with licensed drones operations	Minimal additional cost to your project
Design services can be <b>additional</b> upwards costs unless you have in-house design support	SightWide gives time and technical support to add value to your models, <b>suited for your budget</b>	Ongoing support in making 3D models work for you, by adding purpose led modifications to help you communicate your vision



# Let's Work Together



## Contact Us

**Phone**

514 591 4036

**Mail**

arsam@sightwide.ca

**Website**

www.sightwide.ca