

# *The Bell Ringer*

## *Of the Presbyterian Church of Sweet Hollow*

No matter who you are or where you are on your life journey, you are welcome here.

**February 2026**



### **In This Issue:**

|                       |       |
|-----------------------|-------|
| Pastor's Nook         | 1-2   |
| Building Relationship | 3-4   |
| Faith Formation       | 5     |
| Worship Notes         | 6-7   |
| Stewardship/Giving    | 8-9   |
| Mission & More        | 10-11 |
| Prayer Corner         | 12-13 |
| Special Days          | 14    |
| Website/Social Media  | 15    |

### ***From the Pastor's Nook:***

#### **A New Year, A New Season of Ministry**

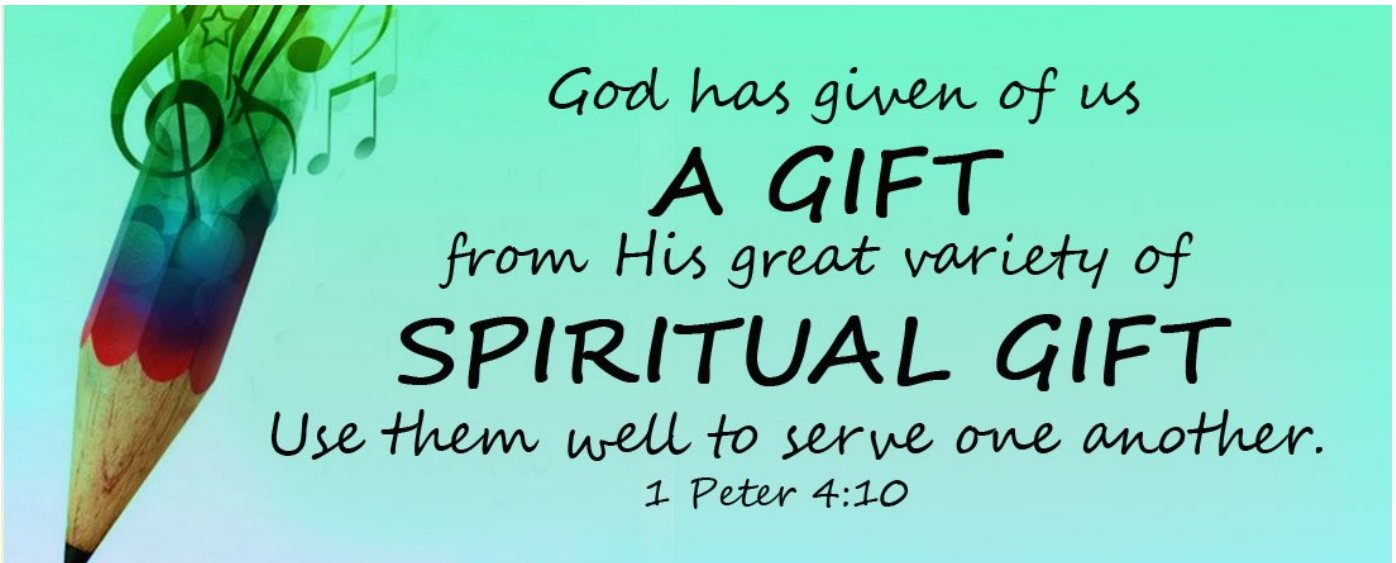
"As each has received a gift, use it to serve one another, as good stewards of God's varied grace." — *1 Peter 4:10*

As we step into a new church year at the Presbyterian Church of Sweet Hollow, we do so with gratitude for how far God has brought us — and with hope for where God is leading us next. With a newly adopted budget and a spirit of continued growth, our congregation is embracing an ambitious and faithful plan to expand our ministries and deepen our impact.

At the heart of this vision is a recommitment to strong, committee-oriented ministry. Committees are not just structures — they are communities of care, creativity, and calling. This year, we are especially focusing on strengthening our Faith Formation ministries, launching a new Children's and Family Ministry initiative, and offering more opportunities for learning, prayer, and spiritual growth across all ages.

Continued  
on next  
page.





### ***From the Pastor's Nook:***

We are also investing in a stronger digital ministry presence, knowing that church no longer happens only within our walls. Through online worship, social media, and digital communication, we can reach people who may never walk through our doors — yet are deeply hungry for connection, hope, and belonging.

In addition, we are renewing our commitment to community connection. Whether through outreach partnerships, neighborhood events, or simply showing up for one another, we want Sweet Hollow to be known as a church that loves boldly and serves faithfully.

All of this growth requires not only vision, but participation. We invite you to bring forward fundraising ideas, to volunteer your time and gifts, and to continue your faithful financial support. Every act of generosity — large or small — helps make this ministry possible. Your giving is not just about maintaining what we have; it's about building what God is calling us to become.

This new year is a fresh chapter — a chance to dream, to serve, and to grow together. We are a small church with a big heart, and with God's grace, there is no limit to what love in action can accomplish.

Let us move forward together, trusting that the One who began a good work among us will bring it to completion.

THE PRESBYTERIAN CHURCH OF SWEET HOLLOW

# Building Relationships



# SHARING YOUR TALENTS & GIFTS

As we step into a new season of ministry, we are grateful for the many ways our church comes alive through the gifts and service of its members. One important way to get involved is by volunteering to serve on a committee. These teams help guide and support the life of our congregation, and new voices are always welcome.

We are inviting participation in Stewardship and Finance, Property, Mission, Faith Formation, Welcoming/ Hospitality, Personnel, and Worship. Whether your gifts are administrative, relational, creative, practical, or spiritual, there is a place for you to contribute meaningfully. Serving on a committee is not only a way to support the church—it's also a way to deepen relationships, grow in faith, and help shape our shared future.

If you feel even a small nudge to get involved, we encourage you to reach out to Pastor Wade, a session member or the church office. Feel free to ask questions and get connected. Together, we can continue building a church that is vibrant, faithful, and responsive to God's call in our community.



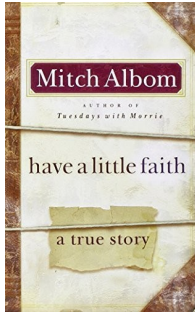
# spiritual gifts

# Building Relationships

## Getting Together

### February Book Club

#### 1st Book Selection: Have A Little Faith by Mitch Albom



Have A Little Faith is a true story. Mitch Albom is asked by his rabbi to write his eulogy which is surprising to Mitch since he no longer attends his childhood temple, lives in another state and married outside of his faith. This poignant true story delves into emotions of compassion, hardships and empathy for those outside one's social circle. I personally was truly touched with how heartwarming and enlightening this story is.

There are 4 hard copies available to distribute on Sunday, February 8 after service. Copies are also available through South Huntington Public Library in hard copy or digitally with programs like Overdrive or Hoopla. It is also available on Amazon for \$15.58, Kindle \$9.99 or Audiobook \$11.96

#### Book Club Schedule:

February 8: Make sure you have your book from Laura or other source.

February 15: Discussion of pages 1-54 (Church parlor) Time: TBA

February 22: Discussion of pages 55-188 (Zoom) Time: TBA

March 1: Discussion of pages 188-249 (Church parlor) Time: TBA

Any suggestions for future books for Getting Together Book Club should be submitted to Laura Fallon by February 20.

## Getting Together Upcoming Events

### Lunar New Years Celebration

Sunday, February 8; 2:30—4:00 at South Huntington Public Library



### Transatlantic Piano Duo

Sunday, February 22; 2:30—4:30 at South Huntington Public Library



### Let's Eat Out!

Let's get together for some good eats and conversation! Please suggest a luncheon/dinner location. Look for and email with more details soon. Contact Laura with questions or suggestions call/text 631-838-8490 or by email llfallon12@gmail.com

### Let's Eat Out!



Club



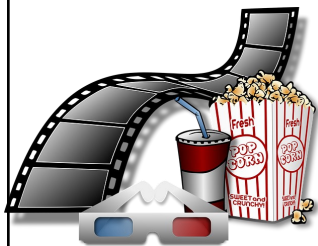
# FAITH FORMATION

**DON'T MISS FAITH & FILM NIGHT.**



**WHAT DOES THE MOVIE STRANGER THAN FICTION HAVE TO DO WITH FAITH IN FILM? COME AND SEE HOW GOD CAN SPEAK, EVEN THROUGH HOLLYWOOD.**

**FUN MOVIE; YUMMY SNACKS; GOOD CONVERSATION.**



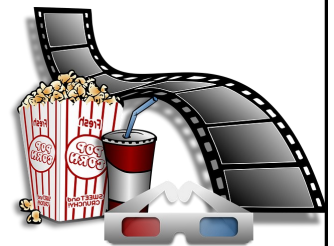
**FILM: STRANGER THAN FICTION**

**WHERE: PCSH CEB HALL**

**WHEN: FEBRUARY 7TH**

**6:00 PM**

**WHO: COME ONE, COME ALL!**



**BE ADVISED THIS MOVIE IS RATED PG-13.  
CONSIDER THIS IF BRINGING CHILDREN.**

# WORSHIP NOTES

## Walking Together into Lent



February brings us to the threshold of the season of Lent—a time in the church year when we slow down, take stock, and open our hearts more fully to God’s grace. Lent is not about guilt or getting things “right,” but about making space: space to listen, to pray, to heal, and to grow. It’s a season that invites honesty, humility, and hope as we walk with Jesus

toward the cross and the promise of resurrection.

This year, the Presbyterian Church of Sweet Hollow will offer two **drop-in opportunities to receive the Imposition of Ashes** on Ash Wednesday. The sanctuary will be open for a quiet, meditative time with candles, guided prayers and music from 10 AM to 2 PM as well as from 7 PM to 8 PM. The mark of the ashes is a simple, powerful reminder that we are beloved, fragile, forgiven, and never alone.

Here are a few gentle ways to make Lent more meaningful this season:

- **Add something small rather than giving something up.** Try a daily prayer, a short devotional reading, or a moment of silence each day. Even five minutes can create sacred space.
- **Practice intentional kindness.** Reach out to someone who might be lonely, offer forgiveness, write a note of encouragement, or volunteer in a small way. Let love be your Lenten discipline.

Lent is not a solo journey—it’s something we walk together as a community of faith. Whether you’ve observed Lent your whole life or are exploring it for the first time, you belong here. We hope you’ll join us as we move through this season with honesty, compassion, and hope.



# WORSHIP NOTES



## Liturgist Schedule

### February

1-Sheri

8-Sisi

15-Laura

22-Niaja

### March

1-Sheri

8-Laura

15-Laura

22-Sisi

29-Niaja (Palm Sunday)



## Deacon Schedule

### February

1 - Maureen

8 - Jean

15 - Laura

22 - Jean

### March

1 - Jessica

8 - Jean

15 - Laura

22 - DEACON NEEDED

29 - Jessica

# Stewardship & Giving



## What Is Per Capita, and Why Does It Matter?

### **Per Capita: Supporting Our Shared Ministry**

Each year, our congregation participates in **Per Capita**, the way Presbyterian Church (U.S.A.) congregations share the basic cost of being part of a connectional church. For **2026, the Per Capita amount is \$42.51 per member.**

Per Capita supports the essential work of our presbytery, synod, and the General Assembly—including pastoral care and training, constitutional services, mission coordination, and the systems that allow the wider church to function with integrity and accountability. While Per Capita is different from mission giving, it is foundational to how we stay connected and governed as Presbyterians.

This shared ministry is not abstract for us. Our presbytery has come alongside our congregation in meaningful ways, providing **grants and loans** that have offered real support, encouragement, and stability during important seasons of our church's life. That assistance is a tangible expression of our Presbyterian commitment to care for one another.

It is also helpful to know that **when Per Capita is unpaid, the cost is covered by the church's general budget.** For that reason, our congregation has set a goal of **100% Per Capita participation**, allowing these shared responsibilities to be met without placing additional strain on church resources.

When we give to Per Capita, we are investing in a system of mutual support that has helped us and continues to strengthen congregations across the Presbyterian Church (U.S.A.). Thank you for your faithfulness and for helping our church remain connected to the wider work God is doing among us.



# Stewardship & Giving

Thank you

Dear loving church family,

I would like to extend my deepest thanks to our church family for the overwhelming love and care you have shown me and my family during my recent surgery and recovery. I have been reminded in the most beautiful ways what it means to be part of the body of Christ. Your prayers, kind messages, thoughtful check-ins, and generous gifts of meals and gift cards have meant more to us than words can fully express.

In a season that could have felt very heavy, you surrounded us with God's compassion in tangible ways. We are truly grateful to be part of such a caring and faithful community. Thank you for lifting us up and walking alongside us during this time. Thank you for being God's hands and feet to us when we needed it most. We are deeply humbled and profoundly grateful for each of you.

With heartfelt gratitude,  
**Jessica Pond & Family**

---

## BLESSED AND GRATEFUL

YOUR THOUGHTFUL GESTURE HAS FILLED MY HEART WITH  
GRATITUDE. I PRAY THAT GOD'S LOVE SURROUNDS YOU TODAY  
AND ALWAYS. THANK YOU FOR BEING A BLESSING.

*"I THANK MY GOD EVERY TIME I REMEMBER YOU." - PHILIPPIANS 1:3*

---



# MISSION and MORE

## Sisi and Taylor's Album Release Show and Food Drive

Sisi and Taylor hosted a celebratory night of music & community with an **Album Release Show & Food Drive** for their band, **Strongest Starfish/Weakest Willow Tree** on January 17<sup>th</sup> in our Fellowship Hall. Additional bands-**Hairshirt**, **Brother** and **Warm Wishes** were also a part of this meaningful concert.

Those attending gathered to listen, reflect and enjoy the live music in a welcoming and inclusive space. In lieu of ticket sales, attendees were asked to bring non-perishable food donations. Thanks to Sisi and Taylor, we were so blessed to deliver an abundance of canned goods to the Huntington Community Food Council, who was so grateful.

Sincere gratitude to Sisi and Taylor for hosting this event and to all those who so generously donated.



# MISSION and MORE

Mission Focus:  
Huntington Community  
Food Pantry  
**A Time of Urgent Need**



## HUNTINGTON FOOD PANTRY



Our mission partner, the **Huntington Community Food Pantry**, is currently facing a **critical shortage of food and essential supplies**. Demand has increased significantly, and pantry shelves are being depleted faster than they can be restocked. Families in our own community are depending on this support to make it through the week—and in many cases, the month.

The pantry has shared a heartfelt request for help, especially for families with infants and toddlers. **Baby diapers and baby wipes are in extremely short supply and are among the most urgently needed items.** These essentials are not covered by SNAP benefits and are often the hardest items for struggling families to afford.

In addition to diapers and wipes, the pantry is also in need of the following **non-perishable food items**:

### Most Needed Food Donations

Canned proteins (tuna, chicken, salmon, beans)  
Canned vegetables and fruit  
Rice and boxed meals  
Shelf-stable milk

Peanut butter and jelly  
Pasta and pasta sauce  
Cereal and oatmeal  
Soups and stews

### Critical Non-Food Needs

**Baby diapers (all sizes)**

**Baby wipes**

Every item donated—no matter how small—makes a real difference. These gifts provide dignity, nourishment, and hope to neighbors who are facing difficult circumstances.

Thank you for responding with generosity and compassion. Together, we can help ensure that no family in our community goes without food or basic necessities during this time of need.

# Prayer Corner

## Love That Heals a Broken World

February is often called the month of love. We talk easily about love - romantic love, family love, sentimental love. All of these are good gifts. But the love at the center of our faith is something deeper, braver and far more demanding. We see hearts in store windows and hear songs about romance, but love is far bigger than just one feeling or one relationship.

Love does not mean agreeing with everyone. It does not mean avoiding hard conversations. It does not mean pretending that pain does not exist. Real love tells the truth, protects the vulnerable, and refuses to let fear have the final word.

This month, perhaps our spiritual practice is simple but not easy:

- To listen more than we speak.
- To notice who is missing from the room.
- To offer kindness without calculating the cost.
- To choose compassion when judgment would be quicker.

When we do this, we become more than a church that believes in love. We become a community that embodies it.

- May our love be visible.
- May it be courageous.
- May it be inconvenient

May it point, always, to the wide and extravagant grace of God.

Scripture speaks of many kinds of love:

- **Love that is patient** when life is hard.
- **Love that forgives** when we have failed or been wounded.
- **Love that protects** when the world feels unsafe
- **Love that hopes** even when circumstances seem dark.
- **Love that seeks justice** for those who are harmed or forgotten.

This kind of love does not belong to a few people or a certain group. It comes from God and is offered to every human heart.

Many of us carry heavy burdens. Some carry regret. Some carry anger. Some carry grief for what has been lost. Some carry fear for what lies ahead. Many of us carry deep sadness when we look at the world and see violence, injustice, and suffering.





# Prayer Corner

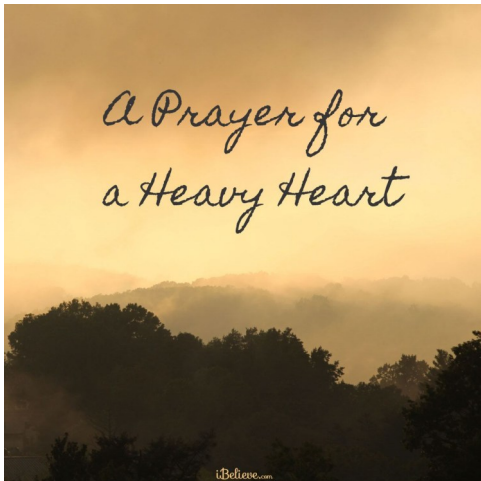
God welcomes all of this into prayer.

Prayer is not about having perfect words. It is about telling the truth in God's presence. It is about breathing when your chest feels tight. It is about remembering that no wall, no mistake, no sentence, no past choice can separate you from the love of God.

When the world feels broken, prayer becomes an act of courage. When hope feels thin, prayer becomes an act of resistance. When hearts are tired, prayer becomes a place to rest.

Perhaps the following prayer can be helpful - read it, maybe simply let it guide your own words.

## A Prayer for a Broken World and a Weary Heart



God of mercy and love

I come to You just as I am -

tired, imperfect, carrying more than I can hold.

You see this world more clearly than I do.

You see the violence, the injustice, the fear,

The lives lost too soon, the families torn apart,

The systems that forget human dignity.

My heart is heavy because of what is happening around us.

Sometimes I feel powerless.

Sometimes I feel angry.

Sometimes I feel numb.

Hold all of it, God.

Hold my grief. Hold my questions.

Hold the parts of me that still hope

And the parts that are afraid to hope again.

Teach me a deeper love -

Love that does not harden, love that does not give up,

Love that does not look away from pain, love that still believes healing is possible.

Let your love reach even here.

Let it reach into locked places,

Into regret, into loneliness, into long nights and quiet fears.

Make me a small part of Your healing in this world,

Even when my parts feels unseen.

And when I cannot find the strength to believe,

Believe for me. Amen.



# Special Days



## February 2026

2... Jean Cavanagh  
 3... Jason Wagner  
 8... Marc Young  
 21... Audra Schmitt  
 23... Kira Sansone  
 27... Jazlynn Pond

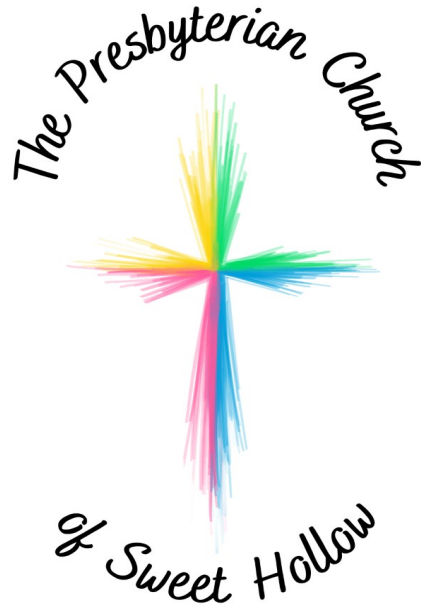


- 1... National Dark Chocolate Day
- 2... National Groundhog Day
- 3... National Missing Persons Day
- 3... National Four Chaplains Day
- 4... National Thank a Mail Carrier Day
- 5... National Shower With a Friend Day
- 6... National Wear Red Day
- 7... National Ice Cream for Breakfast Day
- 8... National Kite Flying Day
- 9... National Pizza Day
- 10... National Umbrella Day
- 11... National Peppermint Patty Day
- 12... National Plum Pudding Day
- 13... Galentine's Day
- 14... Valentine's Day
- 15... National Singles Awareness Day
- 16... Presidents Day
- 17... National Random Act of Kindness Day
- 18... National Drink Wine Day
- 19... National Chocolate Mint Day
- 20... National Love Your Pet Day
- 21... National Red Sock Day
- 22... National Margarita Day
- 23... National Dog Biscuit Day
- 24... National Tortilla Chip Day
- 25... National Small Dog Day
- 26... National Set a Good Example Day
- 27... National Pokemon Day
- 27... National Polar Bear Day
- 28... National Rare Disease Day (USA)



**President's Day**  
**Valentine's Day**  
**National Freedom**  
**Day**  
**Groundhog Day**  
**Black History**  
**Month**

# Website/Social Media



## ***Presbyterian Church of Sweet Hollow***

(631)367-9249

[www.sweethollowpresby.org](http://www.sweethollowpresby.org)

Rev. Wade Pond, Pastor

Jason Black, Director of Music Ministries

Lori Kevelos, Church Administrator

Jill Conroy, Treasurer

Beatrice Reiser, Clerk of Session

Elders: Melissa D'Angelo

Niaja Mowatt

Maureen Sansone

Joan Sommermyer

## **SESSION MEETING!**

The session meets monthly, typically on the third Monday of each month at 8 PM. Most meetings occur via Zoom.

In person meetings occur  
February/May/September/November.

**The next meeting is in person Feb 16.**

Any member of the church is welcome to attend.

Ask Pastor Wade for details.

*Find our website and social media links!*

[www.sweethollowpresby.org](http://www.sweethollowpresby.org)

*Facebook/YouTube/Instagram*

<https://www.facebook.com/sweethollowpresby>

<https://youtube.com/>

[@presbyterianchurchofsweeth1401](https://www.youtube.com/@presbyterianchurchofsweeth1401)

<https://www.instagram.com/presbysweethollow>

**Bell Ringer Delivery:** Would you like a paper copy of the Bell Ringer not digital?

please call the office at (631)367-9249 or

e-mail the office: [pcshsecretary@hotmail.com](mailto:pcshsecretary@hotmail.com) or

e-mail Pastor Wade: [revwadepond@outlook.com](mailto:revwadepond@outlook.com).

**MAR Bell Ringer Submissions: Due by FEB 25**

Email to Jessica Pond: [8kidscallmemom@gmail.com](mailto:8kidscallmemom@gmail.com)