

JULY

The Bell Ringer

Of the Presbyterian Church of Sweet Hollow

No matter who you are or where you are on your life journey, you are welcome here.



THE PRESBYTERIAN CHURCH OF SWEET HOLLOW

Pastor's Nook



The Sacred Practice of Looking Up

Have you ever noticed how often we walk through life looking down? Our eyes are fixed on our phones. We glance at our calendars. We scan grocery lists, bills, emails, and headlines. Before long, we can spend an entire day looking at everything except the world around us.

Summer has a funny way of interrupting that habit.

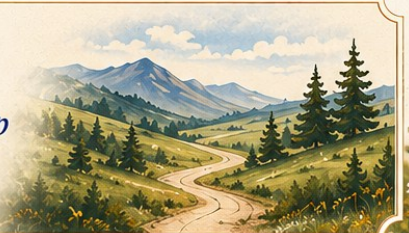
Maybe it's because the sun stays out a little longer. Maybe it's the sound of children laughing outside, the smell of someone grilling dinner, or the sight of fireflies blinking across the backyard. Whatever it is, summer has a way of inviting us to look up again.

The psalmist wrote, *"I lift up my eyes to the hills—where does my help come from?"* (Psalm 121:1). It's a simple image, but a powerful one.

Before the psalmist could remember where hope came from, they first had to lift their eyes.

*"I lift up my eyes
to the hills—
where does my help
come from?"*

PSALM 121:1



JUL. 2026

Issue:

-  Pastor's Nook 1-2
-  Building Relationships 3
-  Faith Formation 4
-  Worship Notes 5-6
-  Stewardship/Giving 7-8
-  Mission & More 9-10
-  Prayer Corner 11
-  Special Days 12
-  Website/Social Media 13



PRESBYTERIAN CHURCH OF SWEET HOLLOW
Faith. Community. Compassion.



Pastor's Nook



I wonder if that's an invitation we all need.



To look up from the worries that never seem to run out.



To look up from the endless stream of notifications.



To look up long enough to notice the beauty
God is still creating every single day.



Faith isn't about pretending life is easy. It's about remembering that God's presence is often discovered in places we would have missed had we never paused to notice.



As a church, we practice "looking up" every Sunday. We gather to hear stories older than ourselves, sing songs that remind us who we are, pray for one another, and discover that we never carry life's burdens alone. Worship doesn't remove our problems—but it does lift our gaze.



So wherever this summer finds you, I hope you'll make time to look up. Watch a sunset. Notice the stars. Sit on the porch with a cup of coffee. Listen to birds before turning on the television. Call someone you haven't spoken to in a while. And when Sunday comes around, come and join your church family as we lift our eyes—and our hearts—to the God who has been walking beside us all along.

Grace and peace,

Pastor Wade



*"I lift up
my eyes
to the hills—
where does
my help
come from?"*

PSALM 121:1



Building Relationships

Relationships Are God's Favorite Tool



If you've ever bought a new hammer, you probably started looking for things to fix.

The same is true of relationships.

We often think the goal is simply to make friends, meet new people, or get connected. Those are wonderful things, but relationships are never the finish line. They're the starting point.



Throughout Scripture, God accomplishes remarkable things through ordinary relationships. Moses had Aaron. Ruth had Naomi. David had Jonathan. Jesus gathered disciples, not because they had it all figured out, but because life is transformed when people journey together.



Relationships are where:

- encouragement happens.
- forgiveness is practiced.
- wisdom is shared over a cup of coffee,
- laughter echoes around a dinner table, and
- someone quietly notices when you're carrying more than you can bear.

In other words, relationships become the places where God's love takes on flesh.



One of the greatest gifts of being part of a church is that we don't simply gather in the same room once a week—we have the opportunity to build a community where people know one another, care for one another, and serve alongside one another. Every conversation after worship, every shared meal, every committee meeting, every Bible study, every chance encounter in the parking lot is another thread woven into something much larger than ourselves.

The beautiful part is that we rarely know where those threads will lead.



- The person you greet on Sunday may become a lifelong friend.
- The newcomer you invite to coffee may one day be encouraging someone else through a difficult season.
- The child whose name you learn today may grow into the leader who serves this congregation years from now.



That's how God works. God takes ordinary relationships and turns them into extraordinary opportunities for grace and mission.

When I started working at Harbor Pickleball, I never thought that it would expand the mission of the church. Yet, because of the relationships that I developed there with the owners and the relationships that the owners had with others, we have begun to cultivate a bagel ministry through the Huntington Community Food Pantry.



So this month, don't just come to church. Stay a little longer. Introduce yourself to someone you don't know. Invite someone to lunch. Sit beside a different person during worship. Ask a question. Listen to a story. Learn a name.

Because you never know what God might do with a relationship that begins with something as simple as saying, "Hello."



*Grace and peace,
Pastor Wade*



THE PRESBYTERIAN CHURCH OF SWEET HOLLOW



Faith Formation



The Presbyterian Church of Sweet Hollow
INVITES YOU TO...

FINDING FAITH IN FILM

JULY 11, 2026

★ K-POP DEMON HUNTERS ★



What do main stream movies have to do
with FINDING FAITH IN FILM?

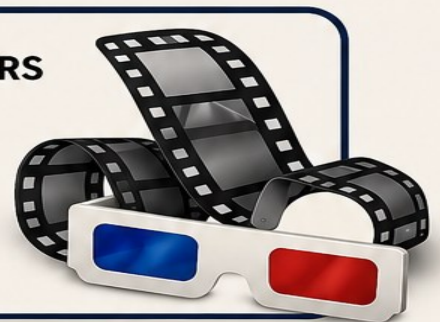
Come and see how God can speak,
even through Hollywood.



Join us for a movie viewing, movie style snacks,
& interesting conversation.
Bring your own take out dinner to make
this a dinner theater event.



FILM: K-POP DEMON HUNTERS
WHERE: PCSH, CEB HALL
WHEN: JULY 11TH
TIME: 6:00 PM
WHO: ALL ARE WELCOME!



PG

PARENTAL GUIDANCE
SUGGESTED

CHECK THIS BOX
FOR SPECIFIC CONTENT
INFORMATION



Some Material May Not Be Suitable for Children



K-POP
DEMON HUNTERS



K-POP
DEMON
HUNTERS



FAITH. FILM. FELLOWSHIP.
We can't wait to see you there!





Worship Notes



Why We Worship



One of my favorite questions in our Presbyterian tradition is also one of the oldest. *“What is the chief purpose of humanity?”*



The answer is beautifully simple: *“To glorify God and enjoy God forever.”*

Did you notice that second part? Not simply to glorify God—but to *enjoy* God.





Sometimes we think of worship as something we do *for* God, as though we’re checking off a weekly obligation or trying to earn a gold star in heaven. But worship isn’t a performance. It isn’t a lecture. It isn’t even just a habit.


Worship is a relationship.




Every Sunday, we gather to remember who God is and who we are.

 We **sing** because some truths are too wonderful to merely speak.

 We **pray** because conversation is how relationships grow.

 We **listen** to Scripture because God’s story reshapes our own.

 We **gather** around Christ’s table because grace is always meant to be shared.



In a world that constantly tells us our worth is measured by what we accomplish, worship gently reminds us that we are first and foremost God’s beloved children.

For one sacred hour, our priorities are reordered.

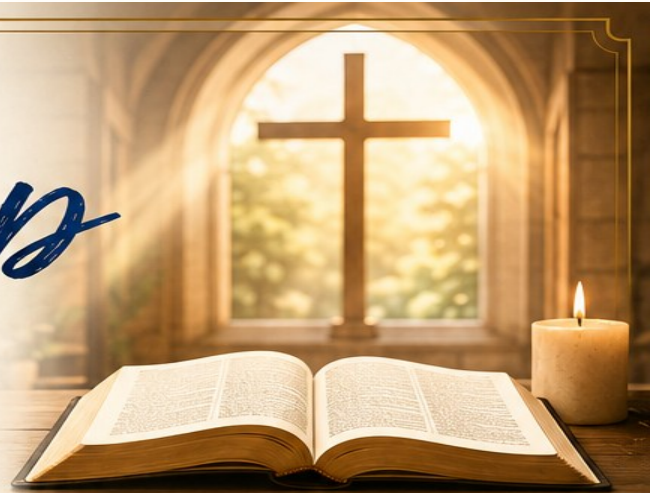
- Our burdens become prayers.
- Our neighbors become family.
- Our gratitude becomes praise.
- And our hearts are turned once again toward the One who has been faithful all along.



Whether you’ve worshiped every Sunday for decades or you’re wondering what church is all about, know this: there is a place for you here. **Come as you are.** Bring your questions, your joys, your doubts, your gratitude, and even your weariness.



Together, we’ll do what we were created to do—to **glorify God**, to *enjoy God*, and to discover that in God’s presence, we become **more fully ourselves.**



Not because
God needs our praise,
but because
*we need the God
we praise.*



We look forward to worshipping with you this Sunday. 





Worship Notes

Serve with Us!

Liturgist, Communion & Deacon Schedule

Thank you for serving our church family!



LITURGIST SCHEDULE

July

- 5: Joan Sommermeyer
- 12: Niaja Mowatt
- 19: Lynn Burke
- 26: Laura Fallon

August

- 2: Jessica Pond
- 9: Lynn Burke
- 16: Niaja Mowatt
- 23: Laura Fallon
- 30: Jessica Pond

September

- 6: Joan Sommemeyer
- 13: Niaja Mowatt
- 20: Laura Fallon
- 27: Jessica Pond



COMMUNION SCHEDULE

July

- 5: Jessica Pond

SMORGASBORD

Fourth Sunday
of Every Month
July 26

August

- 2: Barbara Martin

SMORGASBORD

Fourth Sunday
of Every Month
August 23

September

- 6: Sisi Weaver

SMORGASBORD

Fourth Sunday
of Every Month
September 27



DEACON SCHEDULE

July

- 5: Jessica Pond
- 12: Tracy Dein
- 19: Sue Manning
- 26: Sisi Weaver

August

- 2: Barbara Martin
- 9: Jessica Pond
- 16: Tracy Dein
- 23: **DEACON NEEDED**
- 30: **DEACON NEEDED**

September

- 6: Jessica Pond
- 13: Sisi Weaver
- 20: Sue Manning
- 27: Barbara Martin

SMORGASBORD GATHERINGS

Join us for good food, fellowship, and fun after worship!



JULY SMORGASBORD

Fourth Sunday
July 26



AUGUST SMORGASBORD

Fourth Sunday
August 23



SEPTEMBER SMORGASBORD

Fourth Sunday
September 27

★ Smorgasbord is the fourth Sunday of every month. ★

Many Hands. One Heart. Serving Together.

PRESBYTERIAN CHURCH OF SWEET HOLLOW



PRESBYTERIAN CHURCH OF SWEET HOLLOW



Spaghetti Lunch, Munch & Win!



BINGO PRIZE & GIFT DONATION SIGN-UP SHEET

Help make our Bingo games extra special!

The Sweet Hollow Fundraising Committee is seeking donations of gift cards, individual prizes, and monetary contributions to be used as Bingo prizes for our Spaghetti Lunch, Munch & Win! Fundraiser on **October 3, 2026**.

Your generosity helps create a fun event while supporting the ministries and outreach efforts of our church.

SUGGESTED PRIZE DONATIONS

Individual items make wonderful Bingo prizes!

POPULAR PRIZE IDEAS (\$10-\$30 VALUE)

- Gift Cards (see popular ideas below)
- Small Kitchen Appliances (air fryer, slow cooker, waffle maker, electric kettle)
- Insulated Tumblers or Travel Mugs
- Cozy Throws or Heated Blankets
- Portable Bluetooth Speakers
- Puzzles & Puzzle Boards
- LED Lanterns or Flashlights
- Home Décor Items
- Plants or Succulent Arrangements
- Kitchen Gadgets & Accessories
- Game Sets (card games, board games, dominoes, chess, etc.)
- Adult Coloring Books & Art Sets
- Books or Devotionals
- Garden Tools or Accessories
- Picnic or Outdoor Items (blankets, chairs, coolers)
- Portable Phone Chargers



GIFT CARD IDEAS

Gift cards are always a winner! Suggested values are \$20-\$25 or more.

- Dunkin'
- Starbucks
- Amazon
- Target
- Panera Bread
- Applebee's
- Local Restaurant
- Grocery Store
- Gas Station
- Home Improvement Store
- Bookstore
- Movie Theater
- Ice Cream Shop
- Coffee Shop
- Garden Center

Any gift card or store/restaurant you love is appreciated!

≡ DONATION DEADLINE ≡
Please submit prize donations by:
AUGUST 15, 2026
to allow time for organizing Bingo prizes.

MONETARY DONATIONS

The Fundraising Committee will gladly purchase Bingo prizes on your behalf.

- \$10 Donation
- \$25 Donation
- \$50 Donation
- \$75 Donation
- \$100 Donation
- Other Amount: \$ _____

DONOR INFORMATION

Name: _____
Phone: _____
Email: _____
Donation Item(s): _____

Approximate Value: \$ _____

- I will deliver my donation to the church.
- Please contact me regarding pickup arrangements.





Stewardship/Giving

JULY

“the month of **JULY** bring in more Per Capita Funds!”

JULY I ask you if you have paid your per capita yet?

I am hoping **JULY** brings the opportunity for those members to choose that blue envelope and give.

It helps Sweet Hollow pay the required **\$42.51** for *every member on our rolls*. Families of 3 would pay **\$127.53**.

When you submit your payment, if NOT in the blue envelope, please earmark the money with the words per capita. Online/Venmo donations have a note section to let us know. If members do not earmark their per capita portion, we must take money from our budget to fulfill our responsibility towards the Presbyterian Church (USA).

This payment ensures that we can easily use resources, borrow from the Presbytery office, and receive advice and support from the General Assembly.

Thank you for helping us meet OUR church's obligation!

Jane B.

★

Please remember *each member* should pay a

★ ★ ★



★ ★ ★

Per Capita Apportionment of **\$42.51** this year.

★



THE PRESBYTERIAN CHURCH OF SWEET HOLLOW



Cram-A-Car SCHOOL SUPPLY DRIVE

**HELP US FILL BACKPACKS AND
BRIGHTEN A CHILD'S SCHOOL YEAR!**



Even though summer has just begun, now is the perfect time to stock up on school supplies while sales are at their best.

Our Mission Team is collecting supplies to help local children start the school year prepared and confident.

LAST YEAR,
YOUR GENEROSITY HELPED US
FILL 19 BACKPACKS
WITH SCHOOL SUPPLIES FOR
LOCAL STUDENTS!
*Let's see what we can do
together this year!*

MOST NEEDED ITEMS

- ✓ New Backpacks 
- ✓ Marble Notebooks 
- ✓ Children's Scissors 
- ✓ Magic Markers 
- ✓ Colored Pencils 
- ✓ Elmer's Glue 
- ✓ Glue Sticks 
- ✓ Looseleaf Paper 
- ✓ Looseleaf Binders 

HEALTHY SNACK DONATIONS Welcome!

Many students benefit from easy, nutritious snacks for homework and study time.

Suggested items include:

- Welch's Fruit Snacks
- Skinny Pop Popcorn
- Pretzel Packs
- Pudding Cups
- Fruit Cups



EASY WAYS TO GIVE



TAKE A SHARING BAG

Sharing Bags with suggested donation items are available throughout the sanctuary. Take one home, fill it, and return it during worship.



OR



MAKE A MONETARY DONATION

Prefer to shop less and give more? Simply designate your gift for "School Supplies," and our Mission Team will purchase needed items.



DONATION DEADLINE

Drop off donations in the sanctuary during worship services.

Thank You! 
The Presbyterian Church of Sweet Hollow
Mission Team
The Little Church with a Big Heart



Mission & More



Continuing to FEED OUR Neighbors



HUNTINGTON FOOD PANTRY



One of the greatest gifts of a church is the ability to care for one another in meaningful and practical ways. Through our continued partnership with the Huntington Food Pantry, we have the opportunity to extend **compassion, dignity, and hope to neighbors** who are facing difficult seasons.



For many families, the **rising cost of groceries, housing, childcare**, and everyday necessities has created impossible choices. Food pantries help bridge that gap, ensuring that parents can place meals on the table and children can go to bed nourished and cared for.



While these needs may sometimes feel overwhelming, every can donated, every box of pasta shared, and every package of diapers provided becomes part of a larger *ministry of love.*

At this time, the pantry continues to need nonperishable food items including **canned vegetables, soup, pasta, rice, cereal, peanut butter, and other shelf-stable staples.** Diapers and baby wipes also remain critically important, as these costly essentials are not covered by most assistance programs and are often difficult for struggling families to afford.



Scripture reminds us in Galatians 6:2 to **“Bear one another’s burdens, and in this way you will fulfill the law of Christ.”** Supporting the food pantry is one small but powerful way we live out that calling together. What may seem ordinary to us can become an answered prayer for someone else. Please continue bringing donations to the church throughout the coming weeks. Your ongoing generosity allows this ministry to remain active, responsive, and compassionate to the needs within our community.

Thank you for helping our church be a place where Christ’s love is not only spoken, but shared.



**Every donation makes a difference.
TOGETHER, WE CAN FEED HOPE.**



Prayer Corner



Prayer IN JULY

*Finding Rest in God's
Extravagant Love*

July in Year A brings one of the most tender invitations in scripture:

"Come to me, all you that are weary and are carrying heavy burdens, and I will give you rest." (Matthew 11)

Summer often carries its own weariness — travel, financial strain, caregiving, world events that never seem to quiet down. Many are tired in body. Many more are tired in spirit.

Prayer in July becomes less about striving and more about resting.

In the Presbyterian tradition, we affirm that we are saved by grace — not by productivity, not by moral perfection, not by constant doing. Even in prayer chains and service ministries, we are not trying to earn God's approval. We are responding to love already given.

THIS MONTH, CONSIDER A DIFFERENT KIND OF PRAYER PRACTICE:



1. PRACTICE BREATH PRAYER

- With each inhale: "Come to me..."
- With each exhale: "I will give you rest."



2. PRAY FOR THE OVERBURDENED

Lift up teachers, healthcare workers, parents, activists, and all who carry invisible weight.



3. PRAY FOR SABBATH JUSTICE

In a culture that idolizes busyness, pray that rest becomes an act of resistance and trust.

"Come to me, all you that are weary and are carrying heavy burdens, and I will give you rest."

— Matthew 11

Jesus' yoke is easy not because discipleship is simple — but because we do not carry it alone.

The extravagant love of God does not demand exhaustion. It offers companionship.



Gentle Christ,

*Meet us in our fatigue.
Teach us the holy rhythm of work and rest.
Let your grace be enough for this day.*

Amen.



Special Days



July

CELEBRATIONS & OBSERVANCES

A month to celebrate faith, family and freedom.



- 2 Anthony D'Angelo
- 4 Kevin Pond
- 5 Emily Wagner
- 9 Rose O'Conner
- 18 Maureen Sansone
- 21 Amanda Moder
- 22 Ross Martin
- 25 Dan Schiffmacher
- 27 Lexie Zucker

We're so happy you're part of our church family!



NATIONAL DAYS of JULY

- | | | |
|--|--|---|
| <p>WEEK 1</p> <ul style="list-style-type: none"> 1 U.S. Postage Stamp Day 2 Wildland Firefighter Day 3 Compliment Your Mirror Day 4 Independence Day | | <p>WEEK 4</p> <ul style="list-style-type: none"> 16 Cherry Day 17 Yellow Pig Day 18 Sour Candy Day 19 Words With Friends Day 20 Moon Day 21 Be Someone Day 22 Hammock Day |
| <p>WEEK 2</p> <ul style="list-style-type: none"> 5 Workaholics Day 6 Fried Chicken Day 7 Day of Rock 'N' Roll 8 Freezer Pop Day | | <p>WEEK 5</p> <ul style="list-style-type: none"> 23 Gorgeous Grandma Day 24 Cousins Day 25 Merry-Go-Round Day 26 Aunt And Uncle's Day 27 Love Is Kind Day 28 Waterpark Day 29 Lipstick Day 30 Father-In-Law Day 31 Raspberry Cake Day |



NATIONAL GRILLING MONTH



Fire up the grill, share good food and make wonderful memories!



NATIONAL PICNIC MONTH



Enjoy the simple joys of summer and time together.



INDEPENDENCE DAY

Blessed is the nation whose God is the Lord.

PSALM 33:12





THE PRESBYTERIAN CHURCH OF SWEET HOLLOW

Website/Social Media



≡ You're Invited! ≡

PRESBYTERIAN CHURCH of Sweet Hollow

WORSHIP • COMMUNITY • FAITH • SERVICE

The Presbyterian Church



of Sweet Hollow

Presbyterian Church of Sweet Hollow

(631)367-9249

www.sweethollowpresby.org

Rev. Wade Pond, Pastor

Jason Black, Director of Music Ministries

Lori Kevelos, Church Administrator

Jill Conroy, Treasurer

Beatrice Reiser, Clerk of Session

Elders: Melissa D'Angelo

Niaja Mowatt

Maureen Sansone

Joan Sommermyer

SESSION MEETING!



The session meets monthly, typically on the third Monday of each month at 8 PM. Most meetings occur via Zoom.

In person meetings occur February/May/September/November.

The next meeting is Virtual JUL 20.

Any member of the church is welcome to attend. Ask Pastor Wade for details.

≡ Find our website and social media links! ≡



www.sweethollowpresby.org



Facebook/YouTube/Instagram
<https://www.facebook.com/sweethollowpresby>



<https://youtube.com/@presbyterianchurchofsweet1401>



<https://www.instagram.com/presbysweethollow>



BELL RINGER DELIVERY: Would you like a paper copy of the Bell Ringer not digital?

Please call the office at (631)367-9249 or e-mail the office: pschsecretary@hotmail.com or e-mail Pastor Wade: revwadepond@outlook.com.



AUG BELL RINGER SUBMISSIONS: DUE BY JUL 25

Email to Jessica Pond: 8kidscallmemom@gmail.com

♥ All are welcome here! ♥