

From the Pastor's Nook

And far too much of modern American Christianity has become obsessed with political dominance instead of spiritual transformation.

That's not Christianity.

That's Christian nationalism.

Christian nationalism takes the teachings of Jesus and twists them into a tool for power, control, and dominance instead of love, humility, service, and compassion.

It turns the Gospel into a campaign slogan.

It replaces discipleship with tribalism.

It confuses the kingdom of God with the success of a political movement.

Jesus never made a play for political power. In fact, Jesus consistently resisted it.

And while empires and religious leaders obsessed over influence, status, and control, Jesus kept moving toward the people everyone else pushed aside.

The woman at the well.

The prostitutes

The blind beggar by the road.

The tax collectors and the "unclean."

The leper desperate for healing.

The foreigners

The woman caught in adultery.

The immigrants

The poor.

The outsiders

The prisoners.

Again and again, Jesus crossed boundaries to love people others rejected.

Meanwhile, some Christians today seem far more interested in proximity to power than proximity to the hurting.

We cannot claim to follow Jesus while prioritizing political dominance over loving our neighbors and serving the least of these.

We just can't.

The early Christians got this.

They lived under the power of the Roman Empire, and yet they refused to give ultimate allegiance to Caesar. Their declaration was simple, dangerous, and radical:

Jesus is Lord.

Not Caesar....

Not a political party....

Not the Empire.... Jesus!

I think we desperately need that reminder right now.

Because no politician will ever transform our hearts.

No political party will ever usher in the kingdom of God.

And no nation — even one that puts "under God" in its pledge — will ever be our salvation.

That belongs to God alone.

Building Relationships

How To Build Relationships



There is an old temptation for churches — especially small churches — to become collections of familiar faces who happen to worship in the same building once a week. We learn each other's names. We sit in our favorite pews. We ask how everyone is doing. And yet sometimes we still remain strangers in deeper ways.

But the church was never meant to be a waiting room for heaven. It was meant to be a living community.

The early church shared meals together. They prayed together. They cared for one another's burdens. They celebrated joys loudly and carried grief gently. Their faith was not simply something they believed — it was something they practiced together.

And perhaps that is one of the greatest opportunities before us at Presbyterian Church of Sweet Hollow right now: not simply growing bigger, but growing closer.

Real community is built in surprisingly ordinary ways.

It happens when we linger a little longer after worship instead of rushing to the parking lot.

It happens when we sit beside someone we do not know well at Smorgasbord Sunday.

It happens when we ask a second question instead of settling for "I'm fine."

It happens when we invite them to try out pickleball.

It happens when we remember birthdays, pray for one another during difficult weeks, and show up for each other consistently.

Community also grows when we stop seeing the church as *ours* and start seeing it as a gift meant for the wider community around us.

There are thousands of people in Melville and Huntington who are carrying quiet loneliness, stress, grief, exhaustion, and uncertainty. Many are searching for connection just as deeply as they are searching for faith. Sometimes the most powerful outreach the church can offer is simple hospitality: a warm welcome, a listening ear, a shared meal, a place where people can breathe and belong.

Building Relationships

Imagine what could happen if every member of our congregation made one intentional effort each week to strengthen a relationship:

- ◆ Invite someone to coffee.
- ◆ Introduce yourself to a new face in worship.
- ◆ Attend a local community event.
- ◆ Volunteer with a neighbor organization.
- ◆ Check in on someone who has been absent.
- ◆ Learn the name of someone you usually only wave to.

Small acts of connection have a way of becoming holy things.

Jesus rarely built community through grand programs. More often, he built it around tables, conversations, walks along the road, and moments where people truly saw one another.

Perhaps that is still how the Spirit works today.

Not only in sermons and sanctuaries — but in kindness, curiosity, laughter, listening, and shared life together.

And maybe, little by little, those ordinary moments can help us become not just a church in the community, but truly a church for the community.

WORSHIP NOTES



June



7 - Niaja Mowatt

14 - Joan Sommermyer

21 - Jessica Pond

28 - Laura Fallon (Smorgasbord)

7 - Tracy Dein

14 - Sue Manning

21 - Laura Fallon

28 - Sisi Weaver

WORSHIP NOTES

As we move through the joyful season of Pentecost and into what the church calendar calls *Ordinary Time* (or *Common Time*), our worship begins to settle into the steady rhythm of discipleship. The color green returns to the sanctuary, reminding us of growth, renewal, and the everyday work of following Christ in the world around us.

June's readings from the Revised Common Lectionary invite us into that journey:

- On Pentecost Sunday, we celebrated the gift of the Holy Spirit in Acts 2 — wind, fire, language, and the surprising power of God moving among ordinary people creating a team that we call the church.
- In the weeks that follow, the Gospel readings continue to challenge and encourage us as Jesus calls disciples, heals the hurting, calms fears, and teaches about what it means to live faithfully and courageously.
- Passages from the Psalms and Paul's letters remind us that faith is not only about mountaintop moments, but also about perseverance, grace, community, and hope in daily life.

Common Time is a season less focused on major festivals and more focused on how we live as Christ's people week by week. It is the season where faith takes root, deepens, and grows — not always dramatically, but faithfully.

We will also be thankful for the musical gifts of Mr. Dana Warren who will be serving as our primary musical accompanist while Jason joyfully participates at a children's camp during the summer.

We hope you will join us throughout June as we continue to worship, pray, learn, and grow together as the family of Presbyterian Church of Sweet Hollow.

Growing in Faith
TOGETHER
PENTECOST • COMMON TIME • EVERYDAY DISCIPLESHIP

PENTECOST SUNDAY
We celebrated the gift of the Holy Spirit in Acts 2 — wind, fire, language, and God's surprising power moving among ordinary people, creating the church.

THE GOSPEL READINGS
Jesus calls disciples, heals the hurting, calms fears, and teaches us what it means to live faithfully and courageously.

PSALMS & PAUL'S LETTERS
Faith is not only about mountaintop moments, but also about perseverance, grace, community, and hope in everyday life.

COMMON TIME
A season where faith takes root, deepens, and grows — not always dramatically, but faithfully.

THANKFUL FOR MUSIC
We give thanks for Mr. Dana Warren, our primary musical accompanist while Jason is at children's camp this summer.

We hope you will join us throughout June as we continue to worship, pray, learn, and grow together as the family of
Presbyterian Church of Sweet Hollow.

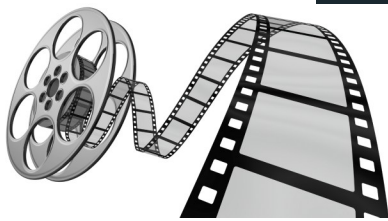
FAITH FORMATION



Finding Faith IN FILM

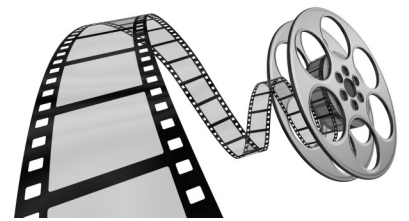
July 11, 2026

*** **Movie Title** ***



What do main stream movies have to do with FINDING FAITH IN FILM?

Come and see how God can speak, even through Hollywood.



Join us for a movie viewing, movie style snacks, & interesting conversation.

Bring your own take out dinner to make this a dinner theater event.

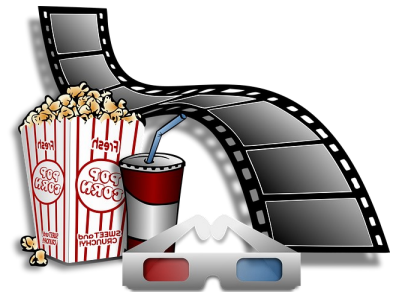
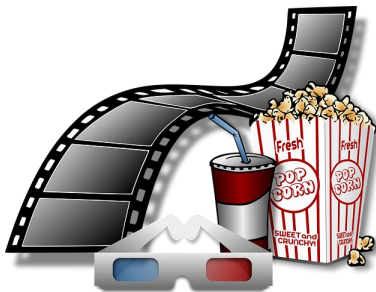
Film: K-Pop Demon Hunters

Where: PCSH, CEB Hall

When: July 11th

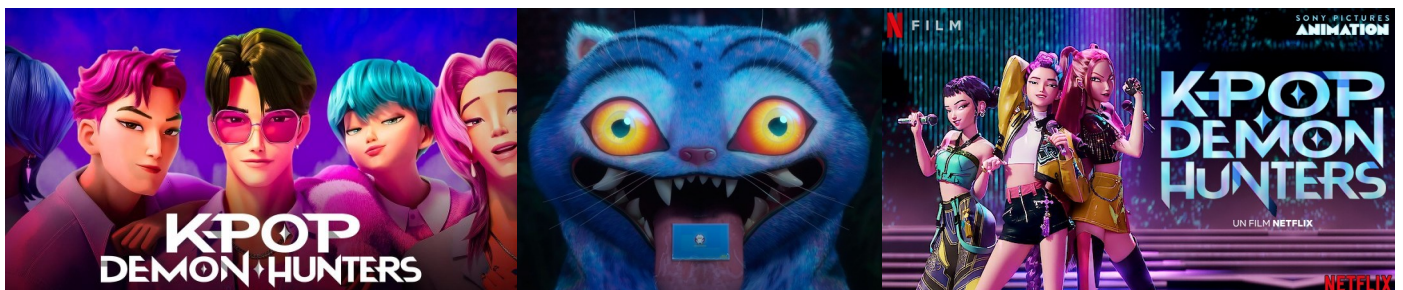
Time: 6:00 PM

Who: ALL ARE WELCOME!



PARENTAL GUIDANCE SUGGESTED	CHECK THIS BOX FOR SPECIFIC CONTENT INFORMATION
PG	
Some Material May Not Be Suitable for Children	

Parental Guidance Suggested



Stewardship & Giving

“MAY the month of MAY bring in more Per Capita Funds!”

MAY I ask you if you have paid your per capita yet?

I am hoping **MAY** brings the opportunity for those members to choose that blue envelope and give.

It helps Sweet Hollow pay the required **\$42.51** for ***every member on our rolls. Families of 3 would pay \$127.53.***

When you submit your payment, if NOT in the blue envelope, please earmark the money with the words per capita. Online/Venmo donations have a note section to let us know. If members do not earmark their per capita portion, we must take money from our budget to fulfill our responsibility towards the Presbyterian Church (USA). This payment ensures that we can easily use resources, borrow from the Presbytery office, and receive advice and support from the General Assembly.

Thank you for helping us meet OUR church’s obligation!

Jane B.

Please
remember
each member
should pay a



**Per Capita
Apportionment
of \$42.51 this
year.**



SWEET HOLLOW PRESBYTERIAN CHURCH

Spaghetti Lunch, Munch & Win



DONATION REQUEST

We need your help!!!

BINGO PRIZE DONATIONS NEEDED!!



Sweet Hollow Presbyterian Church is preparing for our upcoming Senior Spaghetti Lunch & Bingo Afternoon, and we are asking our church family for help!

We are seeking **donated bingo prizes** to help make this a fun and memorable event for the senior groups who join us each week.

Every donation, large or small, is greatly appreciated and helps bring *joy, fellowship* and *laughter* to our seniors.



**DONATIONS MAY BE DROPPED OFF
AT THE CHURCH OFFICE.**

*Thank you for your kindness, generosity
and continued support for our church.*



MISSION and MORE

Summer MISSION School Supplies



This is a heads-up alert. Because store marketing has become crazy, we are putting out the warning to look for those sales on school supplies. Yes, we know the school year hasn't ended yet, but who knows when they will say marble notebooks and pens and markers are a bargain now.

Our fellowship as always given generously. July and August will be the official Mission Goal for School Supplies. Kids of the Tri-County CYA will utilize all supplies that will be blessed by our Pastor & Congregation. Sturdy backpacks were much sought after—maybe Marshalls and T.J.Maxx will have them on sale. A child is definitely more relaxed at the start of the school year knowing they have what is needed to accomplish their job at school.

If you are in the Less is More mode and have oodles of "school related" supplies you will never use, we shall gladly take those gently used items over the summer as kids are always learning.



Your generosity will change lives.
Thank you Sweet Hollow Congregation
The Little Church with a Big Heart's
Mission Team



MISSION and MORE

Continuing to Feed Our Neighbors

One of the greatest gifts of a church is the ability to care for one another in meaningful and practical ways. Through our continued partnership with the Huntington Food Pantry, we have the opportunity to extend compassion, dignity, and hope to neighbors who are facing difficult seasons. For many families, the rising cost of groceries, housing, childcare, and everyday necessities has created impossible choices. Food pantries help bridge that gap, ensuring that parents can place meals on the table and children can go to bed nourished and cared for. While these needs may sometimes feel overwhelming, every can donated, every box of pasta shared, and every package of diapers provided becomes part of a larger ministry of love. At this time, the pantry continues to need nonperishable food items including canned vegetables, soup, pasta, rice, cereal, peanut butter, and other shelf-stable staples. Diapers and baby wipes also remain critically important, as these costly essentials are not covered by most assistance programs and are often difficult for struggling families to afford.



Scripture reminds us in Galatians 6:2 to “Bear one another’s burdens, and in this way you will fulfill the law of Christ.” Supporting the food pantry is one small but powerful way we live out that calling together. What may seem ordinary to us can become an answered prayer for someone else. Please continue bringing donations to the church throughout the coming weeks. Your ongoing generosity allows this ministry to remain active, responsive, and compassionate to the needs within our community.

Thank you for helping our church be a place where Christ’s love is not only spoken, but shared.

Prayer Corner

Prayer Corner: “Let the Truth Be Told”

... Jessica Pond

There is a quiet liturgy many of us have learned by heart.

“How are you?”

“I’m fine.”

We say it in church hallways, in committee meetings, during coffee hour, and sometimes even in prayer. We smile politely while carrying grief, exhaustion, fear, addiction, anxiety, loneliness, financial strain, fractured relationships, or deep uncertainty. Somewhere along the way, many of us absorbed the message that faithful people should always appear strong, grateful, and put together.

But the Gospel tells a different story.

Throughout scripture, God meets people not in their polished perfection, but in their vulnerability. Jacob wrestles. David laments. Peter fails. Thomas doubts. The prodigal returns home ashamed. Even Jesus weeps.

Prayer Corner

The church was never meant to be a showroom for perfect people. It is meant to be a community of grace — a place where truth can be spoken without fear, where wounds are tended with compassion, and where people are reminded that they are beloved long before they have everything figured out.

As Presbyterians in the PC(USA), we proclaim a God of grace wide enough to hold human complexity. We affirm that none of us are beyond God's love, and none of us walk alone. Our faith does not require pretending. In fact, honesty can become holy ground.

There is a lyric from the song, "Truth Be Told" by Matthew West that says:
"There's a sign on the door says, 'Come as you are'..."
The question for the church is whether we truly live as though we mean it.

What would happen if our sanctuaries became places where people could admit:
"I'm struggling."
"I'm grieving."
"I'm overwhelmed."
"I need help."
"I'm not fine."

Perhaps then our churches would look less like performance spaces and more like the body of Christ — people carrying one another's burdens, praying honestly, and trusting that grace is stronger than shame.

The good news of the Gospel is not that we must hide our brokenness from God. The good news is that God already knows us completely and loves us still.

Truth telling is not weakness.
It is courage.
It is confession.
It is community.
It is the beginning of healing.

So this month, may we resist the pressure to pretend. May we create space for authenticity in our homes, our friendships, and our congregation. And may our church continue becoming a place where all people — weary, wounded, hopeful, questioning, joyful, and searching — truly can come as they are.

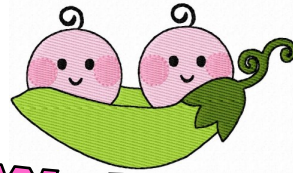
Prayer

Gracious and loving God,
You know the truths we hide behind polite smiles and practiced answers. You see our fears, our wounds, our doubts, and our exhaustion — and still You call us beloved. Teach us to be honest with ourselves, with one another, and with You. Make Your church a refuge of grace, where truth is welcomed and burdens are shared. Give us courage to let go of perfection and trust in Your mercy instead. Through Christ, who meets us in our humanity, we pray. Amen.

Church Happenings



Elsie
4lbs 3oz

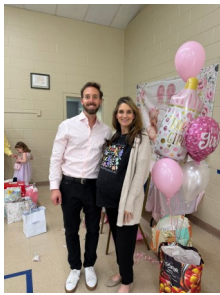


**Welcome
Elsie Mae &
Madison Hope**



Madison
4lbs 3oz

Congratulations Sheri, Keith & Leo!



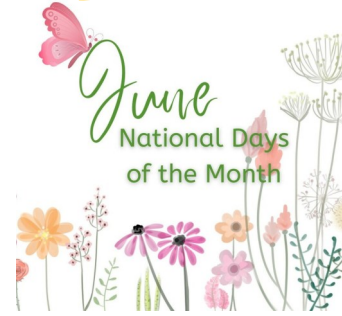
*Dear Church Family,
I gave birth to the twins on May 8th -
they are beautiful girls! Madison Hope was
4lbs, 8oz and Elsie Mae was 4lbs, 3oz at
birth. Thank you to our entire church family,
my shower as honestly one of the greatest
surprises of my life! It was so thoughtful
and incredibly generous. I am so thankful
for everyone's prayers and love. I am also
so, so appreciative and thank everyone for
the incredible gifts,*



*With gratitude,
Sheri,
(Keith & Leo)*

Special Days

Happy Birthday To Everyone Born in June!



June 2026

- 1... Steven Moder
- 2... DJ Krams
- 2... Joey Moder
- 4... Beth Pereira
- 13... Jessalyn & Kristopher Pond
- 22... Evan Pereira
- 25... Joe Moder



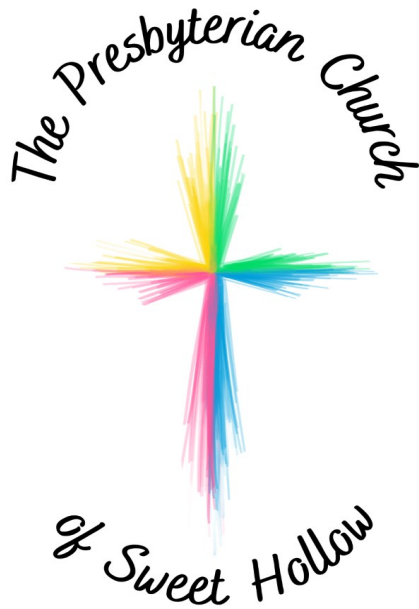
June 2026

- 11... Dan & Carol Schiffmacher

- 1... Say Something Nice Day
- 2... Leave The Office Early Day
- 3... Egg Day
- 4... Hug Your Cat Day
- 5... Start Over Day
- 6... Drive-In Movie Day
- 7... World Caring Day
- 8... Upsy Daisy Day
- 9... Donald Duck Day
- 10... Iced Tea Day
- 11... Making Life Beautiful Day
- 12... Loving Day
- 13... Random Acts of Light Day
- 14... Flag Day
- 15... Smile Power Day
- 16... Fudge Day
- 17... Mascot Day
- 18... Wanna Get Away Day
- 19... Juneteenth
- 20... Longest Day of the Year
- 21... Daylight Appreciation Day
- 22... Kissing Day
- 23... Pink Day
- 24... Patch Day
- 25... Strawberry Parfait Day
- 26... Beautician's Day
- 27... Sunglasses Day
- 28... Paul Bunyan Day
- 29... Camera Day
- 30... Social Media Day



Website/Social Media



Presbyterian Church of Sweet Hollow

(631)367-9249

www.sweethollowpresby.org

Rev. Wade Pond, Pastor

Jason Black, Director of Music Ministries

Lori Kevelos, Church Administrator

Jill Conroy, Treasurer

Beatrice Reiser, Clerk of Session

Elders: Melissa D'Angelo

Niaja Mowatt

Maureen Sansone

Joan Sommermyer

SESSION MEETING!

The session meets monthly, typically on the third Monday of each month at 8 PM. Most meetings occur via Zoom.

In person meetings occur
February/May/September/November.

The next meeting is virtual JUN 15.

Any member of the church is welcome to attend.

Ask Pastor Wade for details.

Find our website and social media links!

www.sweethollowpresby.org

Facebook/YouTube/Instagram

<https://www.facebook.com/sweethollowpresby>

<https://youtube.com/>

[@presbyterianchurchofsweeth1401](https://www.youtube.com/@presbyterianchurchofsweeth1401)

<https://www.instagram.com/presbysweethollow>

Bell Ringer Delivery: Would you like a paper copy of the Bell Ringer not digital?

please call the office at (631)367-9249 or

e-mail the office: pcshsecretary@hotmail.com or

e-mail Pastor Wade: revwadepond@outlook.com.

JUL Bell Ringer Submissions: Due by JUN 25

Email to Jessica Pond: 8kidscallmemom@gmail.com